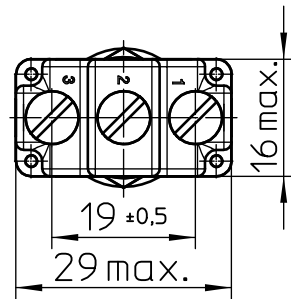
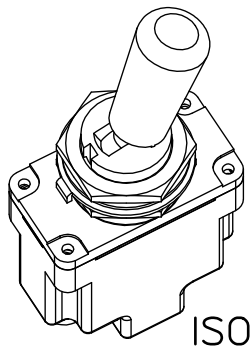
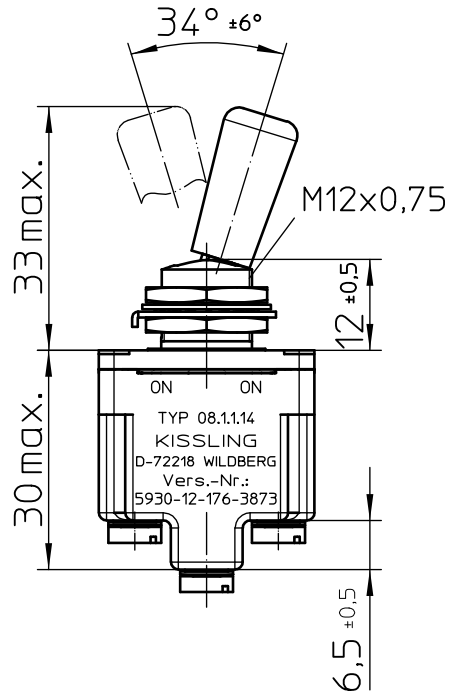
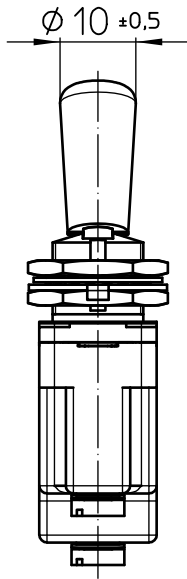


keyway

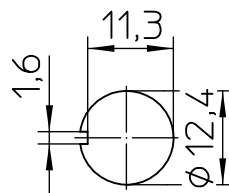
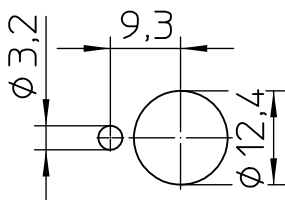
opposite keyway



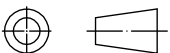
Mounting Detail

with locking ring

without locking ring

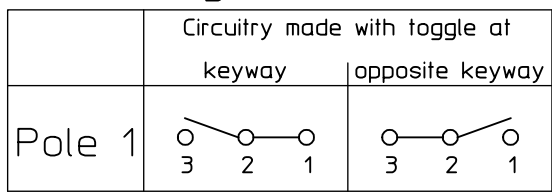


Third Angle Projection



	Date	Name	mm	Scale	 Elektrotechnik - GmbH & Co KG D - 72218 Wildberg	Drawing No:
Drawn	21.03.2005	Braun		1:1		
Check	03.11.2005	Braun	General Tolerances DIN ISO 2768 mK			NSN.: 5930-12-176-3873

## Circuit Diagram



## Actuation

momentary keyway side  
locking opposite keyway side

## Construction

Material, Casing ..... Duroplast GF  
 Material, Cover ..... GD-ZnAl4Cu1  
 Connections ..... Screws M3,5x6 ISO 1580  
 Protection Interior ..... IP 6K7 DIN 40 050 Part 9  
     Connections ..... IP 00 DIN 40 050 Part 9

## Mechanical Data

Current carrying parts ..... CuZn-Alloy  
 Contacts ..... Ag  
 Ambient Temperature Range ..... -55°C to +85°C  
 Storage Temperature Range ..... -65°C to +85°C  
 Life Cycle iaw VG 95 210 Part 21, grade H ..... 100.000 operations

## Electrical Data

Voltage 28 V DC ohmic Load ..... 15A  
         28 V DC inductive Load ..... at L/R = 5 ms 10A  
         28 V DC lamp Load ..... 4A  
         115 V AC ohmic Load ..... 15A  
         115 V AC inductive Load ..... cos.  $\Phi$  = 0,75, 7A  
         115 V AC lamp Load ..... 2A  
         Motor Load ..... utilisation category AC3 (see DIN VDE 0660 Part 107) 5A

Min. Rating ..... 12 V DC, 20 mA

It is recommended to use gold-plated contacts  
for lower currents or voltages.

	Date	Name		Scale		Drawing No:
Drawn	21.03.2005	Braun		1:1		
Check	21.03.2005	Braun	General Tolerances		Elektrotechnik - GmbH & Co KG	NSN.: 5930-12-176-3873
					D - 72218 Wildberg	