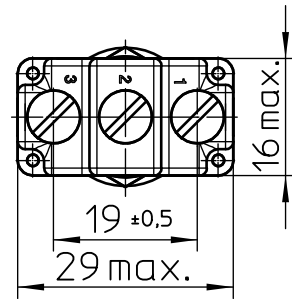
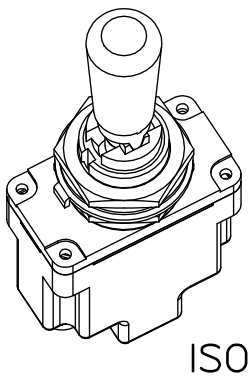
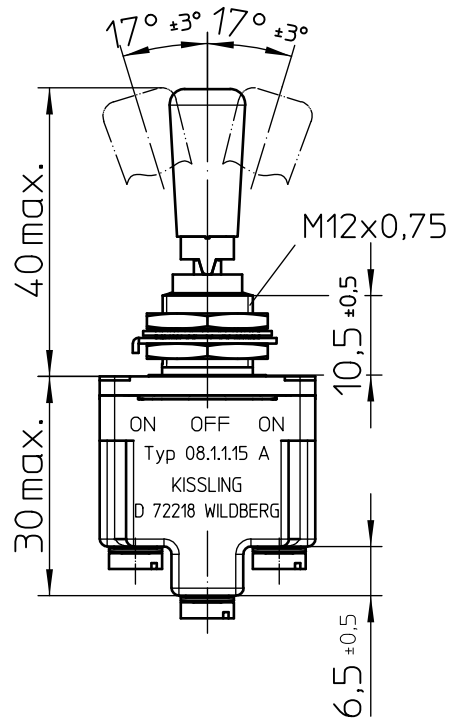
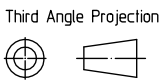
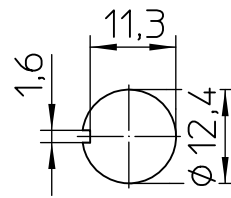
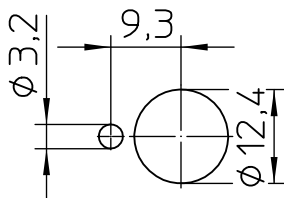


Keyway      Opposite keyway

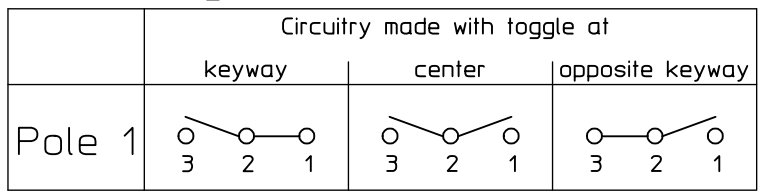


Mounting Detail  
with locking ring      without locking ring



	Date	Name	mm	Scale	 Elektrotechnik - GmbH & Co KG D - 72218 Wildberg	Drawing No:
Drawn	12.03.2002	Kulli		1:1		08-1-1-15 A
Check	03.11.2005	Braun	General Tolerances DIN ISO 2768 mK			NSN.:

## Circuit Diagram



## Actuation

- locking keyway side
- locking center position
- locking opposite keyway side

## Locking Configuration

- locked in keyway side
- locked in center position
- locked in opposite keyway side

## Construction

- Material, Casing ..... Duroplast GF
- Material, Cover ..... GD-ZnAl4Cu1
- Connections ..... Screws M3,5x6 ISO 1580
- Protection Interior ..... IP 6K7 DIN 40 050 Part 9
- Connections ..... IP 00 DIN 40 050 Part 9

## Mechanical Data

- Current carrying parts ..... CuZn-Alloy
- Contacts ..... Ag
- Ambient Temperature Range ..... -55°C to +85°C
- Storage Temperature Range ..... -65°C to +85°C
- Life Cycle iaw VG 95 210 Part 21, grade H ..... 100.000 operations

## Electrical Data

- Voltage 28 V DC ohmic Load ..... 20A
- 28 V DC inductive Load ..... at L/R = 5 ms 15A
- 28 V DC lamp Load ..... 5A
- 115 V AC ohmic Load ..... 15A
- 115 V AC inductive Load ..... cos.  $\Phi$  = 0,75,10A
- 115 V AC lamp Load ..... 3A
- Motor Load ..... utilisation category AC3 (see DIN VDE 0660 Part 107) 5A

Min. Rating ..... 12 V DC, 20 mA

It is recommended to use gold-plated contacts  
for lower currents or voltages.

	Date	Name	mm ←	Scale 1:1		Drawing No: <b>08-1-1-15 A</b>
Drawn	13.03.2002	Kulli	General Tolerances			NSN.:
Check	05.02.2003	Braun				