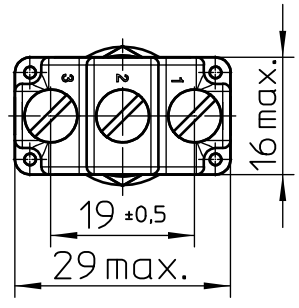
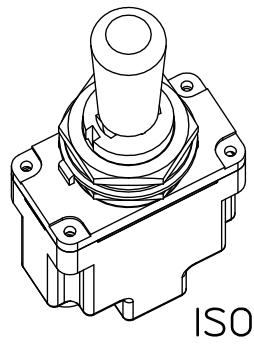
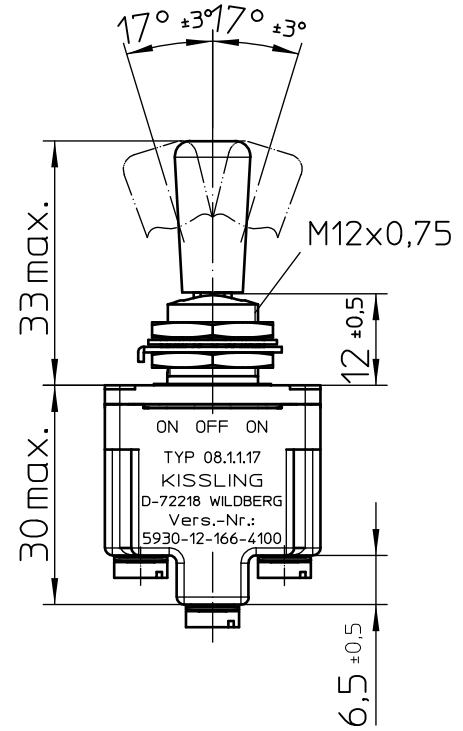
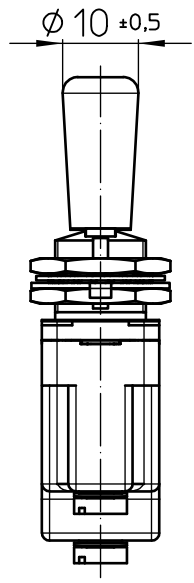


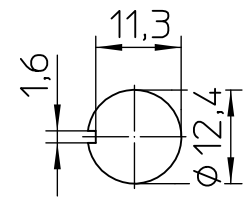
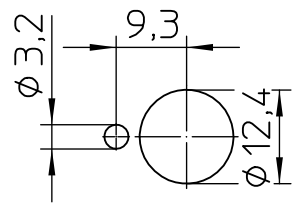
keyway opposite keyway



Mounting Detail

with locking ring

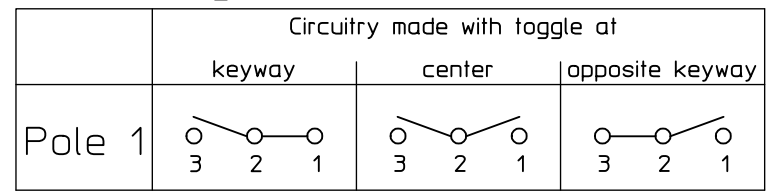
without locking ring



Third Angle Projection

	Date	Name	mm	Scale	 Elektrotechnik - GmbH & Co KG D - 72218 Wildberg	Drawing No:
Drawn	21.03.2005	Braun		1:1		
Check	03.11.2005	Braun	General Tolerances DIN ISO 2768 mK			NSN.: 5930-12-166-4100

Circuit Diagram



Actuation

- momentary keyway side
- locking center position
- momentary opposite keyway side

Construction

- Material, Casing Duroplast GF
- Material, Cover GD-ZnAl4Cu1
- Connections Screws M3,5x6 ISO 1580
- Protection Interior IP 6K7 DIN 40 050 Part 9
- Connections IP 00 DIN 40 050 Part 9

Mechanical Data

- Current carrying parts CuZn-Alloy
- Contacts Ag
- Ambient Temperature Range -55°C to +85°C
- Storage Temperature Range -65°C to +85°C
- Life Cycle iaw VG 95 210 Part 21, grade H 100.000 operations

Electrical Data

- Voltage 28 V DC ohmic Load 15A
- 28 V DC inductive Load at L/R = 5 ms 10A
- 28 V DC lamp Load 4A
- 115 V AC ohmic Load 15A
- 115 V AC inductive Load cos. Φ = 0,75, 7A
- 115 V AC lamp Load 2A
- Motor Load utilisation category AC3 (see DIN VDE 0660 Part 107) 5A

Min. Rating 12 V DC, 20 mA

It is recommended to use gold-plated contacts
for lower currents or voltages.

	Date	Name	mm ←→	Scale 1:1		Drawing No:
Drawn	21.03.2005	Braun	General Tolerances			Elektrotechnik - GmbH & Co KG
Check	19.07.2005	Braun			D - 72218 Wildberg	NSN.: 5930-12-166-4100