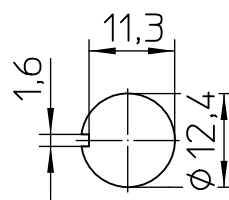
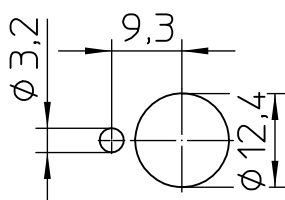


### Mounting Detail

with locking ring

without locking ring



	Date	Name
Drawn	14.08.2001	Kulli
Check	03.11.2005	Braun

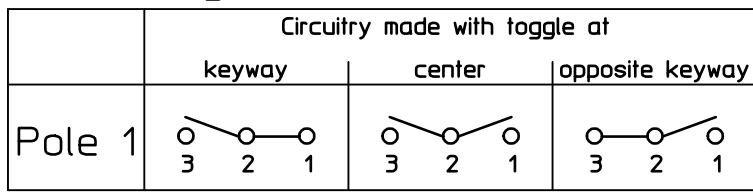
mm	Scale
←	1:1
General Tolerances	
DIN ISO 2768 mK	



Elektrotechnik - GmbH & Co KG  
D - 72218 Wildberg

Drawing No:	09-1-1-17 926
NSN.:	

## Circuit Diagram



## Actuation

- momentary keyway side
- locking center position
- momentary opposite keyway side

## Construction

- Material, Casing ..... Duroplast GF
- Material, Cover ..... GD-ZnAl4Cu1
- Connections ..... Screws M3,5x6 ISO 1580
- Protection Interior ..... IP 6K7 DIN 40 050 Part 9
- Connections ..... IP 00 DIN 40 050 Part 9

## Mechanical Data

- Current carrying parts ..... CuZn-Alloy
- Contacts ..... Ag
- Ambient Temperature Range ..... -55°C to +85°C
- Storage Temperature Range ..... -65°C to +85°C
- Life Cycle iaw VG 95210 Part 21 test condition H ..... 100.000 operations
- Vibration ..... 10g/10-2000Hz Sinus dependence on VG 95210 Part 19 test condition C
- Shock ..... 50g/11ms dependence on VG 95210 Part 28 test condition A

## Electrical Data

- Voltage 28 V DC ohmic Load ..... 15A
- 28 V DC inductive Load ..... at L/R = 5 ms 10A
- 28 V DC lamp Load ..... 4A
- 115 V AC ohmic Load ..... 15A
- 115 V AC inductive Load ..... cos.  $\Phi$  = 0,75, 7A
- 115 V AC lamp Load ..... 2A
- Motor Load ..... utilisation category AC3 (see DIN VDE 0660 Part 107) 5A
- Min. Rating ..... 12 V DC, 20 mA

It is recommended to use gold-plated contacts  
for lower currents or voltages.

	Date	Name	mm	Scale		Drawing No:
Drawn	07.11.2003	Braun	←	1:1		09-1-1-17 926
Check	25.08.2011	Weiro	General Tolerances			NSN.: