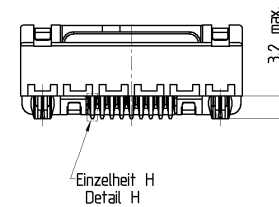
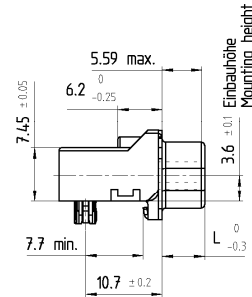
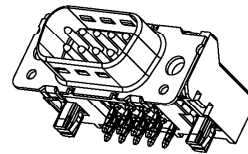
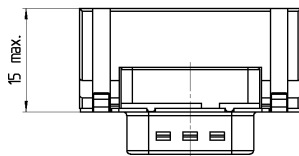
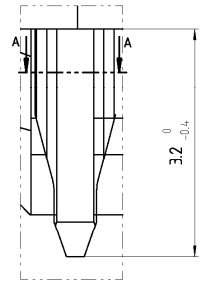


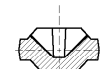
alle Kontakte/all contacts
 $\varnothing 0.13 (M)$



Einzelheit H (20:1)
 Detail H (20:1)



Schnitt AA (20:1)
 Section (20:1)



△ OBSOLETE PARTS: OBSOLETE CIS STREAMLINING PER D.RENAUD/D.SINISI

- 4) Plated-through hole ; incl. plating suitable for compliant press-in zone
 PCB-plating-through : 5...15 µm Sn or SnPb over min. 25 µm Cu
 Drilled holes : $\varnothing 1.15 \pm 0.025$ and $\varnothing 3.15 \pm 0.025$
- 3) torque retention ≥ 70 Ncm
- 2) according to DIN 41611 p.5, DIN IEC 353-5; incl. plating
- 1) according to DIN 41652 p.2 and p.4

- 4) Durchmetallisierte Löcher; incl. Oberflächenbehandlung
 Geeignet für elastische Einpreßzonen
 Metallierung des Loches: 5...15 µm Sn oder SnPb über min. 25 µm Cu
 Bohrdurchmesser: $\varnothing 1.15 \pm 0.025$ und $\varnothing 3.15 \pm 0.025$
- 3) Verdrehsicherheit ≥ 70 Nm
- 2) Nach DIN 41611 T.5, DIN IEC 352-5; incl. Oberflächenbehandlung
- 1) Nach DIN 41652 T.2 und T.4

Sachnr./Ordercode V23529-R1***-	Polzahl n Contacts n	Maß/Dimension				
		A	B	C	D	L
C*09	09	31.19	16.79	25.00 $\begin{smallmatrix} +0.12 \\ -0.13 \end{smallmatrix}$	2.74	6.12
C*15	15	39.52	25.12	33.30 $\begin{smallmatrix} +0.15 \\ -0.1 \end{smallmatrix}$	2.74	6.12
C*25	25	53.42	38.84	47.04 $\begin{smallmatrix} +0.13 \\ -0.13 \end{smallmatrix}$	2.76	5.99
C*37	37	69.70	55.50	63.50 $\begin{smallmatrix} +0.13 \\ -0.13 \end{smallmatrix}$	2.76	5.99

Anforderungsstufe 1)
 performance level 1)

Sachnr./Ordercode V23529-	Maß/Dimension $\varnothing G$
S1*02-C***	M3
S1*03-C***	4-40UNC

1:1

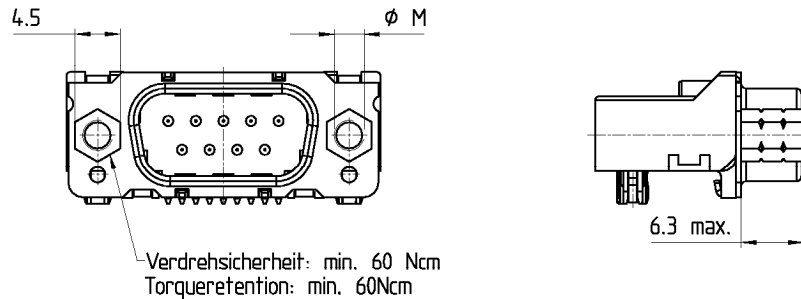


Dargestellt wird die 9-polige Ausführung V23529-S1202-C209
 On the drawing : the 9 pole version V23529-S1202-C209

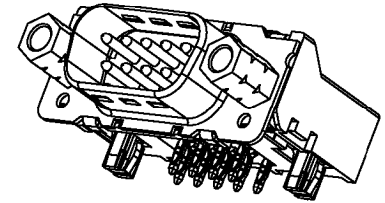
<small>PROPRIETARY</small> THIS INFORMATION IS CONFIDENTIAL AND PROPRIETARY TO TYCO ELECTRONICS CORPORATION AND ITS WORLDWIDE SUBSIDIARIES AND AFFILIATES. IT MAY NOT BE DISCLOSED TO ANYONE OTHER THAN TYCO ELECTRONICS PERSONNEL WITHOUT WRITTEN AUTHORIZATION FROM TYCO ELECTRONICS CORPORATION, HARRISBURG, PENNSYLVANIA, USA.		CHANGES TO THIS DRAWING MUST BE DONE ONLY IN CAD	PAPER SIZE A2
APPLICABLE SPEC. :		FINISH	DIMENSIONS APPLY
Tyco Electronics Corporation Oostkamp - Belgium		SCALE 2:1 20:1 1:1	WEIGHT
		MATERIAL	DIMENSIONS IN MM
DATE 16.1.96	NAME Sterckx	MATR. Sub-D 90° abgewinkelt Eurostyle Einpreß Stiftleiste D-Sub 90° angled Eurostyle press fit Pin	
APP. EC CS CI	TOLERANCE UNLESS SPECIFIED OTHERWISE	NO. V23529-S****-C****-7427	SHT. 1
C ECO-13-010550 09AUG2013 SLB	B ECO-12-018934 02NOV12 CJV	CUSTOMER DRAWING No.: C 1-1393482-4	
REV. CHANGE GREER	DATE	APP.	OF 3

PROPRIETARY: THIS INFORMATION IS CONFIDENTIAL AND PROPRIETARY TO TYCO ELECTRONICS CORPORATION AND ITS WORLDWIDE SUBSIDIARIES AND AFFILIATES. IT MAY NOT BE DISCLOSED TO ANYONE, OTHER THAN TYCO ELECTRONICS PERSONNEL, WITHOUT WRITTEN AUTHORIZATION FROM TYCO ELECTRONICS CORPORATION, HARRISBURG, PENNSYLVANIA, USA.

Ausführung mit Gewindebolzen
 Version with studbolt
 V23529-S1*04/S1*05-C***



Sachnr./Ordercode V23529-	Maß/Dimension Ø M
S1*04-C***	M3
S1*05-C***	4-40UNC



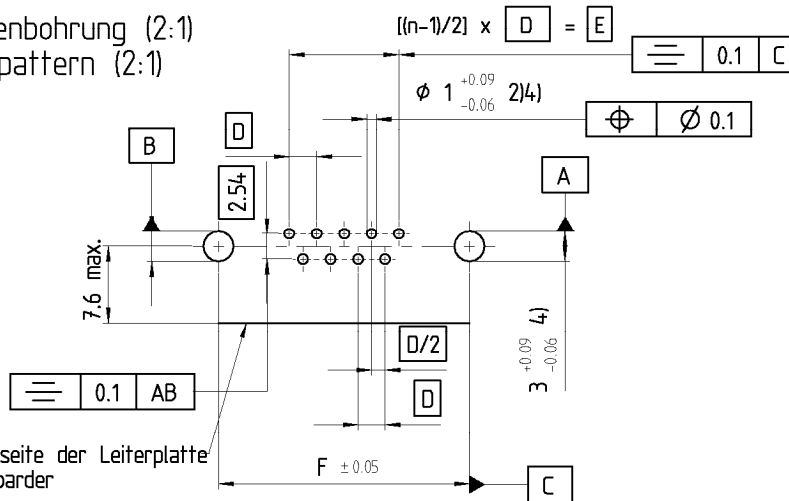
Verpreßhinweis
 press-in information

Einpressen über Kunststoff mit:
 - 2-Hub-Pressen 60kN : 1-1393491-3
 - Einpreßmaschine 60/100 kN : 4-1393488-2
 Zu verwendenden Werkzeuge :
 - Drückstück : 1393490-6
 - Amböß : 3-1393489-5
 Einstellhöhe : Abstand zwischen LP und
 angedrucktem Stempel : 7.45 bis 7.6mm

pressing in via the plastic body :
 - 2-stroke press 60kN : 1-1393491-3
 - press-fit machine 60/100kN : 4-1393488-2
 pressing-in tools :
 -Compression tool : 1393490-6
 -anvil : 3-1393489-5
 set-up heights : distance between PCB and
 compression tool : 7.45 to 7.6 mm

Erläuterungen siehe Seite 1
 Remarks see Page 1

Leiterplattenbohrung (2:1)
 PCB hole pattern (2:1)



Kantenseite der Leiterplatte
 PCB-boarder

Sachnr./Ordercode V23529-S1***-	Polzahl n Contacts n	Maß/Dimension		
		D	E	F
C*09	09	2.74	10.96	25.00
C*15	15	2.74	19.18	33.30
C*25	25	2.76	33.12	47.04
C*37	37	2.76	49.68	63.50

Anforderungsstufe 1)
 performance level 1)

APPLICABLE SPEC.:		FINISH	
DIMENSIONS APPLY		PLATING	
SCALE 2:1		WEIGHT	
MATERIAL		NAME	
DATE 16.1.96		Sub-D 90° abgewinkelt Eurostyle Einpreß	
NAME Sterckx		Stiftleiste	
DEP. EC CI PD		D-Sub 90° angled Eurostyle press fit	
TOLERANCE UNLESS SPECIFIED OTHERWISE		Pin	
NO. V23529-S***-C***-7427		SHT. 2	
REV. C see page 1		DF 3	
REV.	CHANGE ORDER	DATE	APP.
CUSTOMER DRAWING No.: C 1-1393482-4			

Sub-D 90° abgewinkelt Einpreß // D-Sub 90° press-in

V 2 3 5 2 9 - + * * * * - + * * * *

EINBAUHÖHE // MOUNTING HEIGHT
S = Eurostylebauhöhe 3.6mm // Eurostyle 3.6 mm

AUFBAU // CONFIGURATION
1 = isoliert // insulated
2 = geschirmt 1) // shielded 1)

BESCHRIFTUNG // MARKING
1 = tyco // tyco
2 = Neutral // neutral
3 = Sonderbeschriftung A // special marking A
4 = Sonderbeschriftung B // special marking B
5 = Sonderbeschriftung C // special marking C

ANSCHLÜßAUSFÜHRUNG // CONTACT TYPE
0, 1 = EP-Stiel 3.2 mm // press-in pin 3.2 mm long

BEFESTIGUNG Steckseite/Leiterplatteseite // MOUNTING CONNECTOR/PCB
01 = Loch Ø3 / ohne Massekontakt // hole Ø3 / without grounding
02 = Gewinde M3 / mit Massekontakt // thread M3 / with grounding
03 = Gewinde 4-40 UNC / mit Massekontakt // thread 4-40 UNC / with grounding
04 = Gewindebolzen M3 / mit Massekontakt // studbolt screwlock M3 / with grounding
05 = Gewindebolzen 4-40 UNC / mit Massekontakt // studbolt screwlock 4-40 UNC / with grounding

STECKERPOLZAHL // NO OF CONTACTS
09 = 9-polig // 9-contact
15 = 15-polig // 15-contact
25 = 25-polig // 25-contact
37 = 37-polig // 37-contact

ANFORDERUNGSSTUFE // PERFORMANCE LEVEL
2 = Anf. II // PL II

STECKERART // CONNECTOR TYPE
C = Stiftleiste mit Schirmfiederung // male connector with grounding fingers

1) in Vorbereitung // in preparation

Active part numbers. Contact Tyco Electronics for other configuration availability

Old Part Number	Tyco Part Number
V23529-S1102-C209	1-1393482-4
V23529-S1102-C215	3-1393482-0
V23529-S1102-C225	1-1393482-5
V23529-S1102-C237	3-1393482-1
V23529-S1103-C215	3-1392810-0
V23529-S1104-C209	2-1393482-1
V23529-S1104-C215	4-1483489-2
V23529-S1105-C209	3-1393482-0
V23529-S1105-C215	3-1393482-2
V23529-S1105-C225	3-1393482-4
V23529-S1105-C237	3-1393482-5

OBSOLETE
OBSOLETE
OBSOLETE
OBSOLETE
OBSOLETE

PROPRIETARY THIS INFORMATION IS CONFIDENTIAL AND PROPRIETARY TO TYCO ELECTRONICS CORPORATION AND ITS WORLDWIDE SUBSIDIARIES AND AFFILIATES. IT MAY NOT BE DISCLOSED TO ANYONE OTHER THAN TYCO ELECTRONICS PERSONEL, WITHOUT WRITTEN AUTHORIZATION FROM TYCO ELECTRONICS CORPORATION, HARRISBURG, PENNSYLVANIA, USA.

CHANGES TO THIS DRAWING MUST BE DONE ONLY IN CAD

PAPER SIZE A2

APPLICABLE SPEC. FINISH DIMENSIONS APPLY PLATING SCALE WEIGHT MATERIAL

tyco Tyco Electronics Corporation Dostkamp - Belgium

Electronics LOCAL DIMENSIONS IN MM

DATE 16.1.96
NAME Stecke
APP. EC CS D

NAME Sub-D 90° abgewinkelt Eurostyle Einpreß
Stiftleiste
D-Sub 90° angled Eurostyle press fit Pin

NO. V23529-S****-C***-*-7427 SHT. 3

REV. CHANGE GROUP DATE APP. CUSTOMER DRAWING No. C 1-1393482-4 OF 3