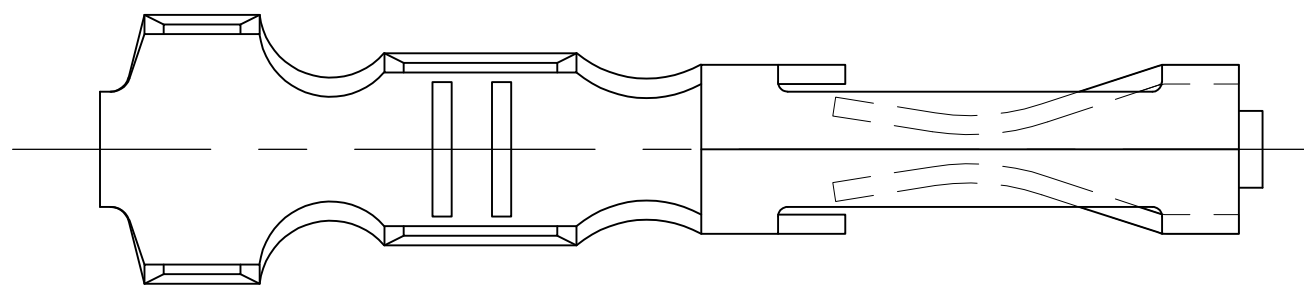


THIS DRAWING IS UNPUBLISHED. RELEASED FOR PUBLICATION
 © COPYRIGHT - By - ALL RIGHTS RESERVED.

LOC	DIST	REVISIONS					
	00	P	LTR	DESCRIPTION	DATE	DWN	APVD
			A1	PART REVISION ADDITION IN THE TABLE	23JUN2015	NV	PS



1 LOOSE PIECE TERMINAL MUST MEET ALL APPLICABLE STRIP SPECIFICATIONS IN ADDITION TO THOSE SHOWN.



2 PRE-PLATED MATERIAL: (.000050 NICKEL OVER ENTIRE TERMINAL, .000015 GOLD IN CONTACT AREA), TO BE PLATED WITH GOLD FLASH PER 112-33-1 OVER ENTIRE TERMINAL.



3 PRE-PLATED MATERIAL: (.000050 NICKEL OVER ENTIRE TERMINAL, .000030 GOLD IN CONTACT AREA), TO BE PLATED WITH GOLD FLASH PER 112-33-1 OVER ENTIRE TERMINAL.



4 LUBRICATE PER 118-25007.



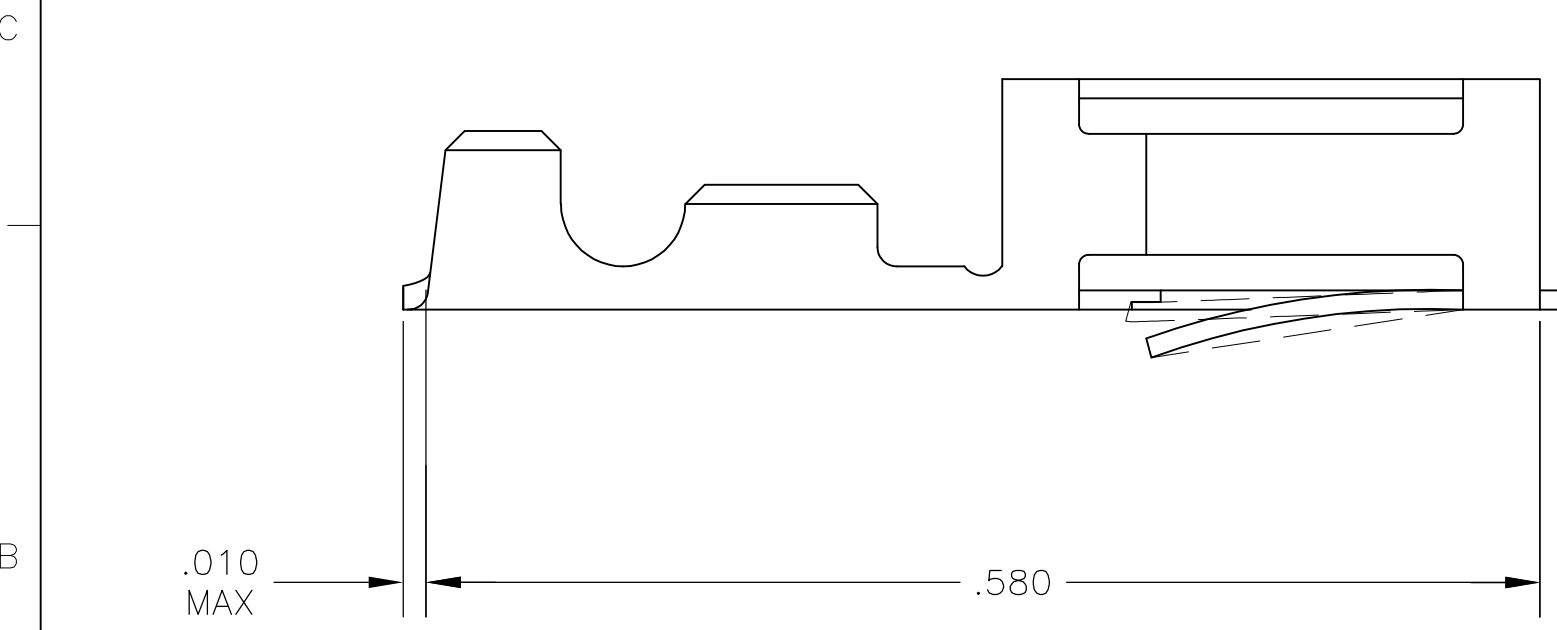
5 PREPLATED STOCK: .000016 MIN TIN PER 112-20-1 (REF ONLY).



6 PRE-PLATED MATERIAL: (.000050 NICKEL OVER ENTIRE TERMINAL, .000015 GOLD ON CONTACT AREA), TO BE PLATED .000050-.000100 BRIGHT TIN-LEAD PER 112-26-1, IN TERMINATION AREA



7 PRE-PLATED MATERIAL: (.000050 NICKEL OVER ENTIRE TERMINAL, .000030 GOLD ON CONTACT AREA), TO BE PLATED .000050-.000100 BRIGHT TIN-LEAD PER 112-26-1, IN TERMINATION AREA



OBSOLETE		102102-7	102106-5	H
OBSOLETE		102102-6	102106-4	H
OBSOLETE		102102-5	102106-3	V
		102102-2	102106-2	V
OBSOLETE		102102-1	102106-1	H
	FINISH	MAKE FROM STRIP PART NO.	PART NUMBER	REV

THIS DRAWING IS A CONTROLLED DOCUMENT.		DWN KIRAN HOLAL 11OCT2013	STE TE Connectivity													
DIMENSIONS: INCHES		CHK JOSEPH OLSON 11OCT2013														
TOLERANCES UNLESS OTHERWISE SPECIFIED:		APVD JOSEPH OLSON 11OCT2013	NAME MOD I RECP LP													
<table border="0"> <tr><td>0 PLC</td><td>± -</td></tr> <tr><td>1 PLC</td><td>± -</td></tr> <tr><td>2 PLC</td><td>± -</td></tr> <tr><td>3 PLC</td><td>± .005</td></tr> <tr><td>4 PLC</td><td>± -</td></tr> <tr><td>ANGLES</td><td>± -</td></tr> </table>		0 PLC	± -	1 PLC	± -	2 PLC	± -	3 PLC	± .005	4 PLC	± -	ANGLES	± -	PRODUCT SPEC -	SIZE A3	
0 PLC	± -															
1 PLC	± -															
2 PLC	± -															
3 PLC	± .005															
4 PLC	± -															
ANGLES	± -															
MATERIAL		APPLICATION SPEC -	CAGE CODE 00779	DRAWING NO C-102106												
FINISH -		WEIGHT -	RESTRICTED TO -													
CUSTOMER DRAWING			SCALE 10:1	SHEET 1 OF 1												
			REV A1													