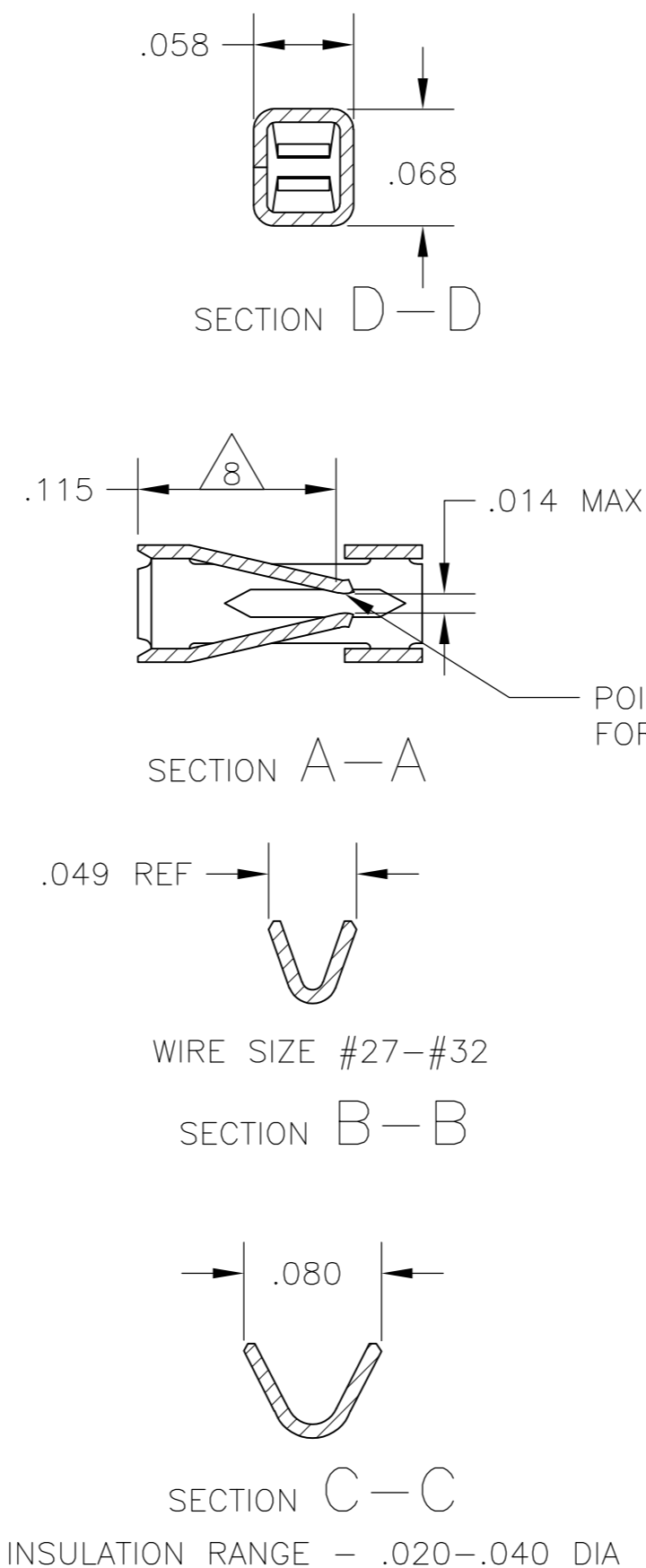
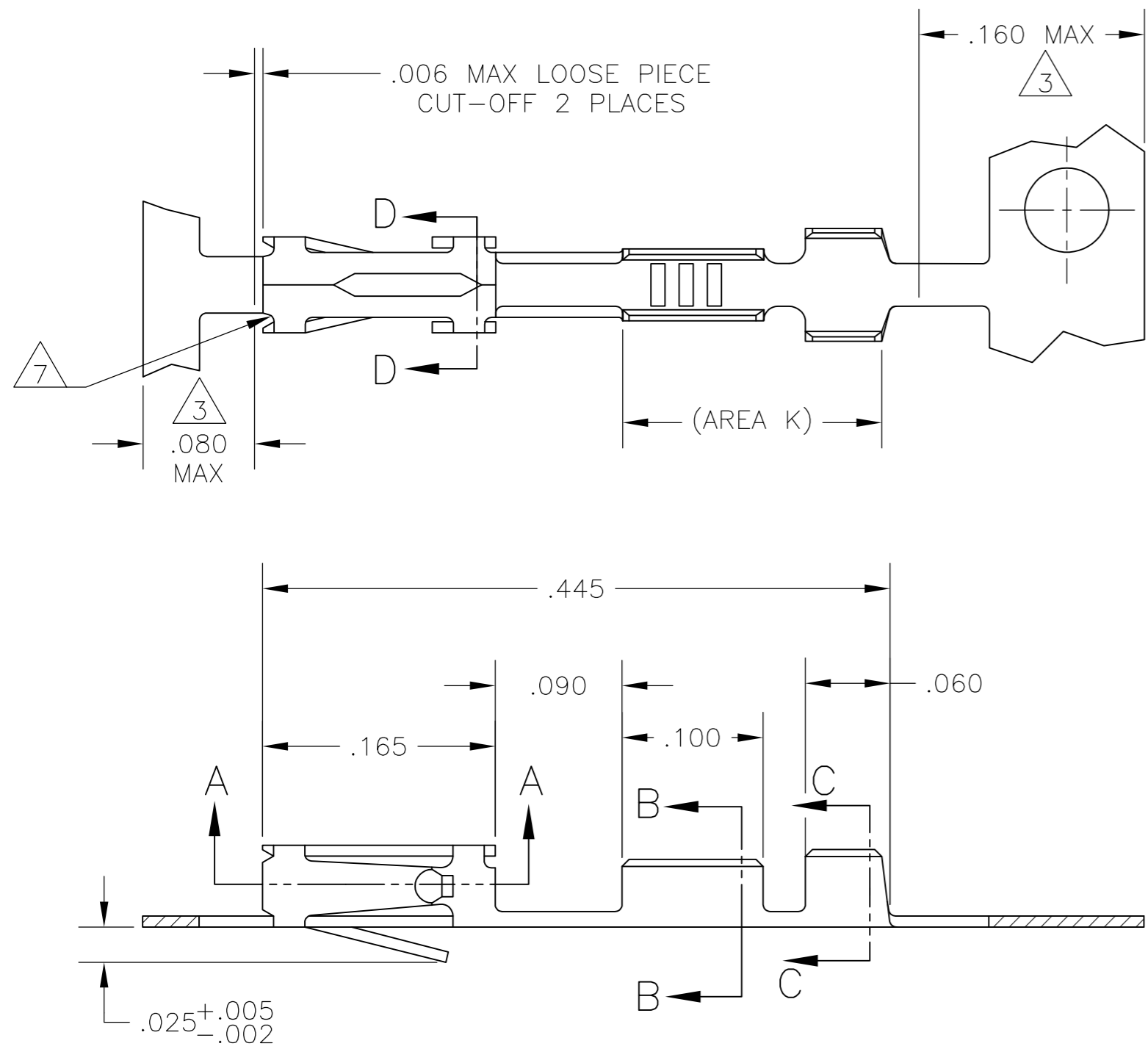


THIS DRAWING IS UNPUBLISHED. RELEASED FOR PUBLICATION
 © COPYRIGHT - By - ALL RIGHTS RESERVED.

LOC		DIST		REVISIONS			
P	LTR	DESCRIPTION		DATE	DWN	APVD	
AD	00	J		REVISED PER ECO-15-004633	18JUN2015	NK	JO



- 1 .000030 GOLD ON CONTACT AREA, GOLD FLASH ON REMINDER OVER .000050 NICKEL.
- 2 RELEED FOR MIN APPLICATOR.
- 3 GOLD PLATING IS NOT REQUIRED IN THIS AREA.
- 4 HAND TOOL MUSED FOR CRIMPING L.P. CONTACT IS #90358-1.
- 5 .0000150 GOLD ON CONTACT AREA, .00010-.000200 93/7 BRIGHT TIN-LEAD IN AREA K, ALL OVER .000050 NICKEL.
- 6 .000030 GOLD ON CONTACT AREA, .00010-.000200 93/7 BRIGHT TIN-LEAD IN AREA K, ALL OVER .000050 NICKEL.
- 7 CUT-OUTS ON THE BOX ARE AT MANUFACTURERS OPTION.
- 8 POINT OF MEASUREMENT FOR PLATING THICKNESS(INSIDE BEAMS).
- 9 OBSOLETE PART NUMBER.

SUPERCEDED BY 102918-1	LOOSE PIECE	4	6	9	102918-6
	_____		6	9	102918-5
	LOOSE PIECE	4	5	9	102918-4
	_____		5	9	102918-3
	LOOSE PIECE	4	1		102918-2
	_____		1		102918-1
REMARKS	FINISH	PART NUMBER			

THIS DRAWING IS A CONTROLLED DOCUMENT.		DWN	KATE HELM	03MAY89		TE Connectivity				
DIMENSIONS: INCHES		CHK	C. OBERMAN	02JUN89		NAME				
TOLERANCES UNLESS OTHERWISE SPECIFIED:		APVD	J. GESFORD	02JUN89		PRODUCT SPEC				
0 PLC ± - 1 PLC ± - 2 PLC ± - 3 PLC ± .005 4 PLC ± - ANGLES ± -		APPLICATION SPEC		108-25021		SIZE		CAGE CODE	DRAWING NO	RESTRICTED TO
MATERIAL: CU-NI-SI		FINISH: SEE TABLE		WEIGHT: -		A2 00779		C=102918		-
CUSTOMER DRAWING						SCALE: 10:1		SHEET: 1 of 1		REV: J