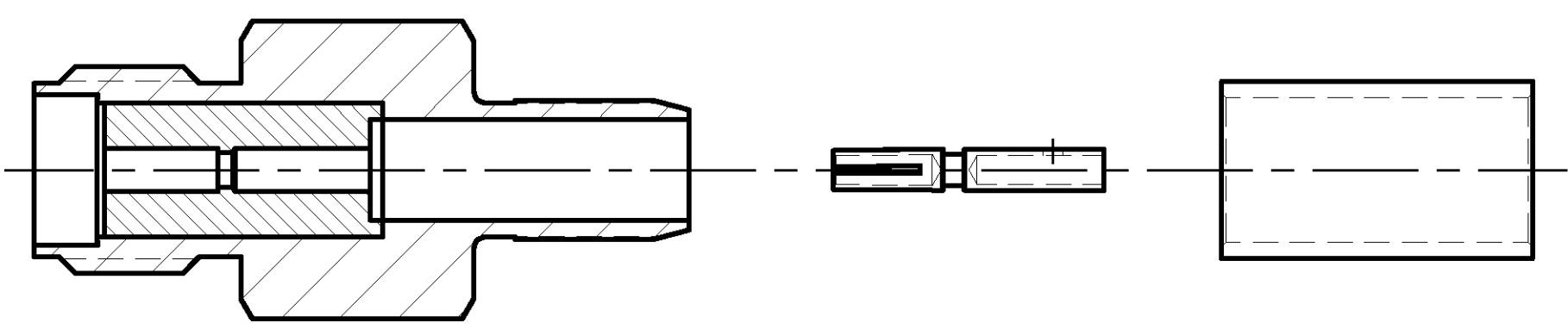


THIS DRAWING IS UNPUBLISHED. RELEASED FOR PUBLICATION N/A, N/A  
 © COPYRIGHT N/A BY TYCO ELECTRONICS CORPORATION. ALL RIGHTS RESERVED.

LOC	DIST	REVISIONS					
DF	X0	P	LTR	DESCRIPTION	DATE	DWN	APVD
		O		REV PER 0G3D-0424-02	9-02	JMK	JL

COMPONENT	MATERIAL	FINISH
HOUSING	STAINLESS STEEL PER ASTM-A-484 OR ASTM-A-582 TYPE 303	PASSIVATED PER ASTM-A-380
DIELECTRIC	PTFE FLUOROCARBON PER ASTM-D-1457	
CENTER CONTACT	BERYLLIUM COPPER PER ASTM-B-196 OR 197 ALLOY C17300, CONDITION H	GOLD PLATED PER ASTM-B-488
FERRULE	COPPER OR BRASS ALLOY, ROCKWELL F65 MAX	GOLD PLATED PER ASTM-B-488



AS SHIPPED TO CUSTOMER

**ENVIRONMENTAL**

TEMPERATURE RATING: -65°C TO +165°C  
 VIBRATION: MIL-STD-202, METHOD 204, CONDITION D  
 SHOCK: MIL-STD-202, METHOD 213, CONDITION 1  
 MOISTURE RESISTANCE: MIL-STD-202, METHOD 106  
 CORROSION: MIL-STD-202, METHOD 101, CONDITION B. 5% SALT SPRAY  
 THERMAL SHOCK: MIL-STD-202, METHOD 107, CONDITION B EXCEPT HIGH TEMP 85°C

**MECHANICAL**

INTERFACE DIMENSIONS: MIL-STD-348A FIG. 310.2  
 RECOMMENDED MATING TORQUE: 7-10 IN-LBS  
 FORCE TO ENGAGE & DISENGAGE (IN-LBS MAX): 2.0  
 WEIGHT (GRAMS): TBD

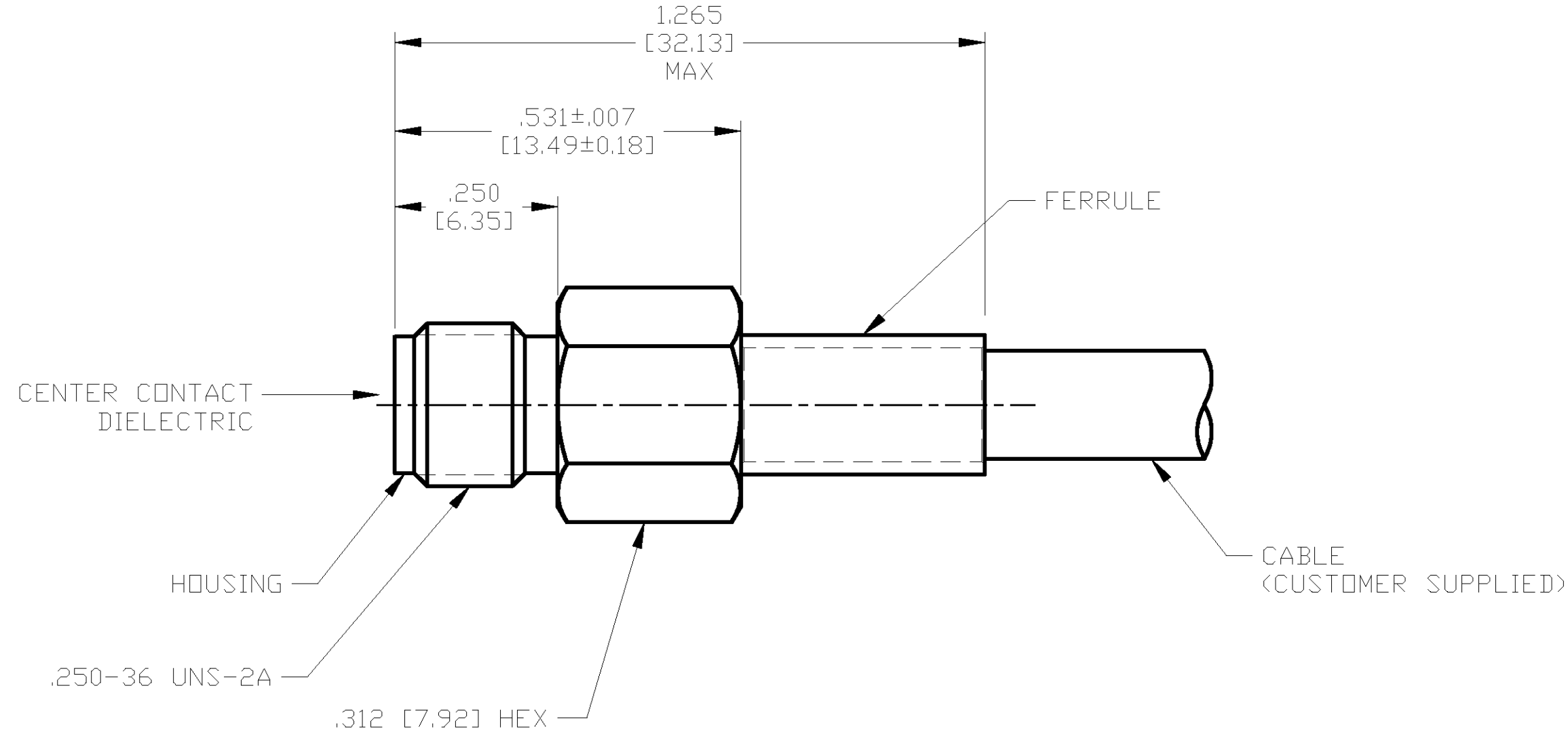
MATING CHARACTERISTICS: INSERTION (MAX LBS) 2  
 WITHDRAWAL (MIN OZ): 1

CABLE RETENTION: AXIAL FORCE (LBS) 30  
 TORQUE (IN-OZ): N/A

CENTER CONTACT CAPTIVATION: AXIAL (LBS): 6.0  
 RADIAL (IN-OZ): N/A

**ELECTRICAL**

NORMAL IMPEDANCE (OHMS): 50  
 FREQUENCY RANGE (GHz): DC TO 12.4  
 VOLT RATING @ SEA LEVEL (VRMS MAX): 250  
 VSWR: 1.15+0.02f(GHz)  
 INSERTION LOSS: (dB MAX): .06 √f(GHz)  
 RF LEAKAGE (dB MIN): -60 @ 2-3GHz  
 CORONA 70,000 FT (VRMS MIN): 190  
 DIELECTRIC WITHSTANDING VOLTAGE (VRMS MIN) AT SEA LEVEL: 750  
 I.R. (MEGOHMS MIN): 5000  
 RF HIGH POTENTIAL AT SEA LEVEL (VRMS MIN @ 5 MHz): 500  
 CONTACT RESISTANCE (MILLIOHMS MAX):  
 CENTER CONTACT: 3.0  
 OUTER CONTACT: 2.0  
 CABLE TO HOUSING: 0.5



ASSEMBLED VIEW

DESIGNED TO USE  
 RG-122/U OR EQUIVALENT  
 CABLE ENTRY  
 DIAMETER MIN

HOUSING:	.099 [2.51]
CONTACT:	.033 [0.84]
DIELECTRIC:	N/A
FERRULE:	.172 [4.37]

THIS DRAWING IS A CONTROLLED DOCUMENT.

DIMENSIONS:	TOLERANCES UNLESS OTHERWISE SPECIFIED:
INCHES [mm]	0 PLC ± -
	1 PLC ± -
	2 PLC ± -
	3 PLC ± .005 [0.13]
	4 PLC ± -
	ANGLES ± -

MATERIAL: SEE TABLE  
 FINISH: SEE TABLE

DWN	J. KAISER	9/11/02	Tyco Electronics Corporation Harrisburg, PA 17105
CHK	J. LIPPERT	10-8-02	
APVD	J. LIPPERT	10-8-02	
PRODUCT SPEC	SMA STRAIGHT CABLE JACK-CRIMP ATTACHMENT (M39012/57-3027) CAT C		
APPLICATION SPEC	20-528		RESTRICTED TO
WEIGHT	TBD	A2 00779	SCALE 5:1 SHEET 1 OF 1 REV 0

1051920-1  
 PART NO.