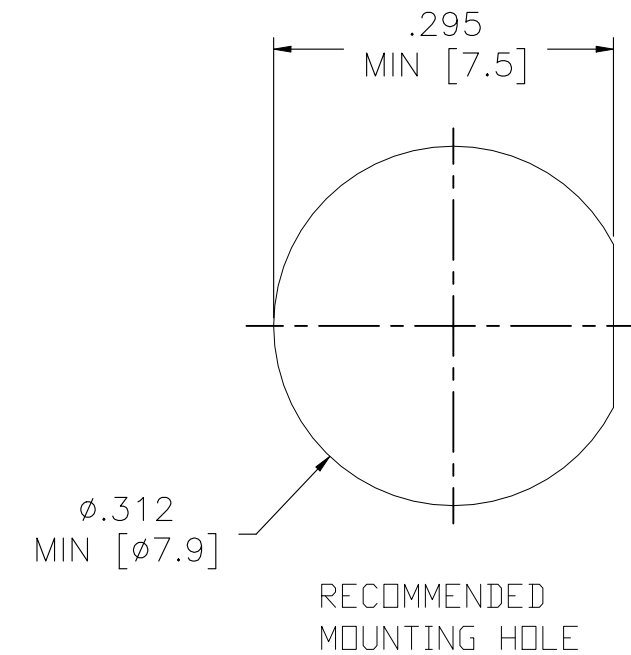
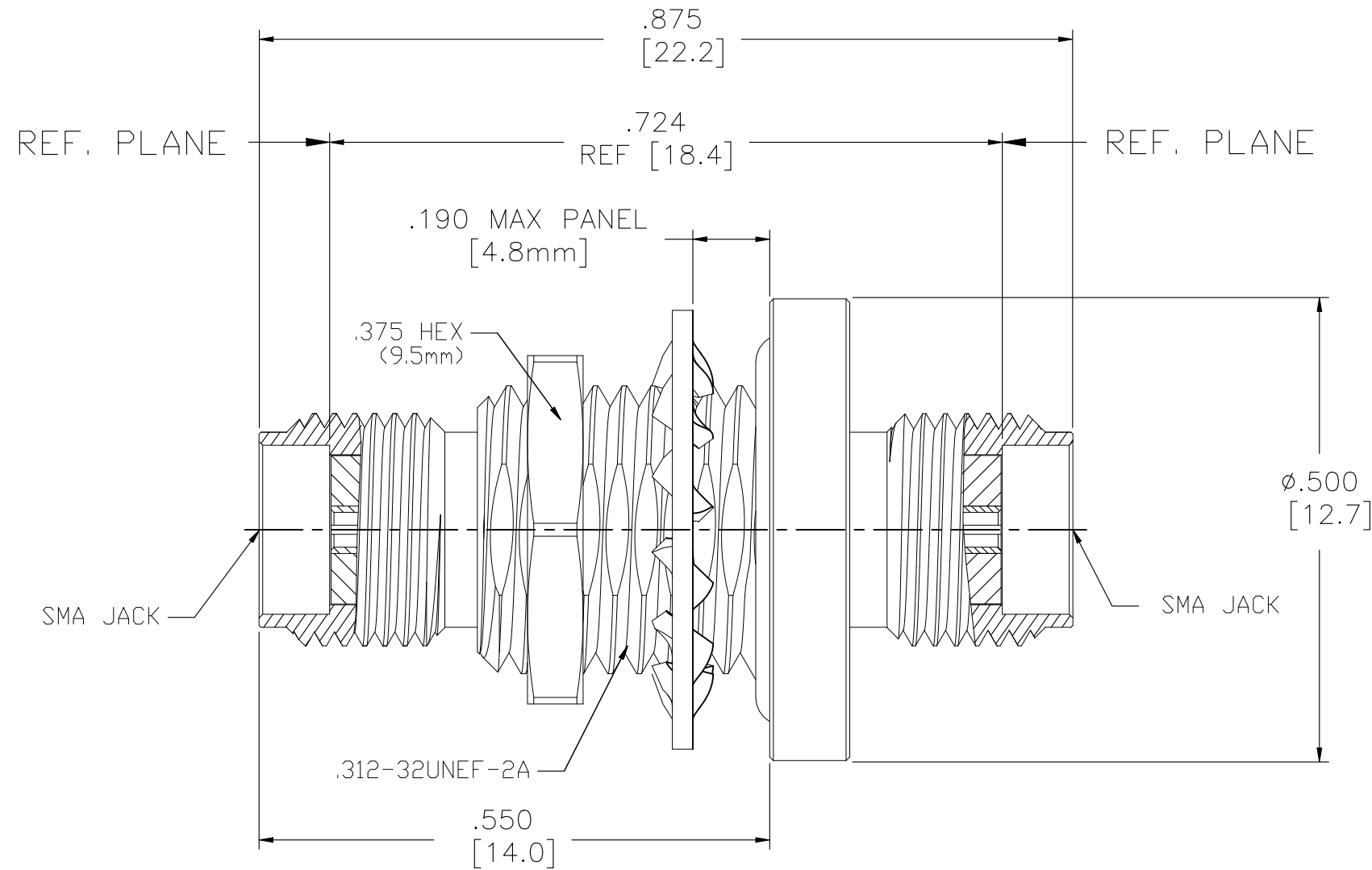


P	LTR	DESCRIPTION	DATE	DWN	APVD
	A2	REVISED PER ECR-21-103794	03JUN2021	RS	WK



ELECTRICAL	MECHANICAL	ENVIRONMENTAL
Nominal Impedance (Ohms) 50	Interface Dimensions MIL-STD-348A, Fig. 310.2	Temperature Rating -65°C to +165°C
Frequency Range (GHz) DC to 18.0	Recommended Mating Torque 7 to 10 In-Lbs	Vibration MIL-STD-202, Method 204, Condition D
Volt Rating (VRMS MAX) @ Sea Level 335	Mating Characteristics: Insertion (MAX Lbs) 3.0, Withdrawal (MIN Oz) 1.0	Shock MIL-STD-202, Method 213, Condition I
VSWR 1.10 + .010 f(GHz)	Force to Engage and Disengage (In-Lbs MAX) 2.0	Thermal Shock MIL-STD-202, Method 107, Condition C
Insertion Loss (dB MAX) .15 √f(GHz)	Center Contact Captivation Axial (Lbs) 6.0, Radial (In-Oz) N/A	Moisture Resistance MIL-STD-202, Method 106
RF Leakage (dB MIN) -90	Seal: Hermetic: 1 x 10 <sup>7</sup> cc/sec, Weatherproof: 30 psi MAX	Corrosion - MIL-STD-202, Method 101, Condition B, 5% salt spray
Corona, 70,000 Ft (VRMS MIN) 250	Mounting Seal	
Dielectric Withstanding Voltage (VRMS MIN) @ Sea Level 1000	Weight (Grams)	
Contact Resistance (Milliohms MAX) Center Contact 12.0, Outer Contact 4.0		
RF High Potential @ Sea Level (VRMS MIN @ 5 MHz) 670		
I.R.(Megohms MIN) 5000		

.XXX = in  
XX.X = mm

THIS DRAWING IS A CONTROLLED DOCUMENT.

DIMENSIONS:	TOLERANCES UNLESS OTHERWISE SPECIFIED:
INCHES	0 PLC ± -
	1 PLC ± -
	2 PLC ± -
	3 PLC ± .005
	4 PLC ± -
	ANGLES ± 1°
MATERIAL -	FINISH ±1/64

QUANTITY PER ASSY	PARTS LIST
1	GLASS BEAD HERMETIC SEAL 8
1	EPM O-RING 7
1	Au STAINLESS STEEL LOCKWASHER 6
1	Au STAINLESS STEEL MOUNTING NUT 5
1	Au STAINLESS STEEL HOUSING 4
1	PTFE INSULATION 3
1	Au IRON-NICKEL ALLOY CONTACT EXT. 2
1	Au BeCu CENTER CONTACT 1
-1	PLATING MATERIAL DESCRIPTION ITEM

STE TE Connectivity

SMA BULKHEAD FEEDTHRU JACK TO JACK ADAPTER HERMETIC SEAL

APVD D. NANIA

SIZE A3 CAGE CODE 00779 DRAWING NO C-1054874 RESTRICTED TO -

CUSTOMER DRAWING SCALE 6:1 SHEET 1 OF 1 REV A2