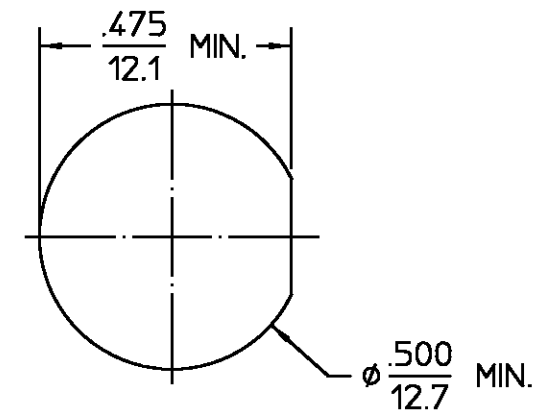


DESIGNED FOR USE WITH	.141 S.R. CABLE
CABLE ENTRY DIAMETER MINIMUM	
SLEEVE	.142
DIELECTRIC	.051
CONTACT	.042

REVISIONS			
REV	DESCRIPTION	DATE	APPROVED
044	REVISED	12/16/97	[Signature]



RECOMMENDED MOUNTING HOLE

COMPONENT	MATERIAL	FINISH
HOUSING REAR HOUSING CLAMP NUT MOUNTING NUT LOCKWASHER	STAINLESS STEEL PER ASTM-A484 AND ASTM- A582, TYPE 303	PASSIVATE PER QQ-P-35
INNER SLEEVE	BRASS PER ASTM-B-16, HALF HARD	GOLD PLATE PER MIL-G-45204
DIELECTRIC	PTFE FLUOROCARBON PER ASTM-D-1457	N/A
CENTER CONTACT	BERYLLIUM COPPER PER ASTM-B-196 OR ASTM-B-197, ALLOY C17300, CONDITION H	GOLD PLATE PER MIL-G-45204
RETAINING RING	PHOSPHOR BRONZE PER QQ-B-750, GRADE B2	N/A
GASKET	SILICONE RUBBER PER ZZ-R-765	N/A

ELECTRICAL	MECHANICAL	ENVIRONMENTAL
Nominal Impedance (Ohms) <u>50</u>	Interface Dimensions MIL-STD-348A, Fig. <u>313-2</u>	Temperature Rating <u>-65°C to 105°C</u>
Frequency Range (GHz) DC to <u>15</u>	Recommended Mating	Vibration MIL-STD-202, Method 204, Condition B
Volt Rating (VRMS MAX)	Torque <u>12 to 15 in-lbs</u>	Shock MIL-STD-202, Method 213, Condition 1
@ Sea Level <u>500</u>	Mating Characteristics:	Thermal Shock MIL-STD-202, Method 107, Condition B,
VSWR <u>1.35 MAX</u>	Insertion (MAX Lbs) <u>2.0</u>	Except High Temp <u>115°C</u>
Insertion Loss (dB MAX) <u>.06√f(GHz)</u>	Withdrawal (MIN Oz) <u>2.0</u>	Moisture Resistance MIL-STD-202, Method 106
RF Leakage (dB MIN) <u>-60 @ 2-3 GHz</u>	Force to Engage and Disengage (In-Lbs MAX) <u>2.0</u>	Corrosion - MIL-STD-202, Method 101, Condition B, 5% salt spray
Corona, 70,000 Ft (VRMS MIN) <u>375</u>	Center Contact Captivation	
Dielectric Withstanding Voltage (VRMS MIN) @ Sea Level <u>1,500</u>	Axial (Lbs) <u>N/A</u>	
Contact Resistance (Milliohms MAX)	Radial (In-Oz) <u>N/A</u>	
Center Contact <u>2.0</u>	Cable Retention	
Outer Contact <u>0.2</u>	Axial Force (Lbs) <u>60</u>	
Cable to Housing <u>0.5</u>	Torque (In-Oz) <u>N/A</u>	
RF High Potential @ Sea Level (VRMS MIN @ 5 MHz) <u>1,000</u>	Weight (Grams) <u>TBD</u>	
LR.(Megohms MIN) <u>5,000</u>		

.XXX = in  
XX.X = mm (REF)

UNLESS OTHERWISE SPECIFIED DIMENSIONS ARE IN INCHES	DRAWN BY EJC	DATE 3/14/72			<b>AMP Incorporated</b> 140 Fourth Avenue Waltham, MA 02451-7599	
FRAC. DEC. ANGLES ± 1/64 ± .005 ± 1°	CHECKED BY BWC	3/15/72			TITLE 'OST' STRAIGHT BULKHEAD CABLE JACK SOLDER CLAMP ATTACHMENT	
These drawings and specifications are the property of M/A COM Interconnect Div. and shall not be reproduced or copied or used in whole or in part as the basis for the manufacture or sale of item(s) without written permission.	APPD BY PRB	3/15/72			NO. AP. <u>408-08208 (31-009)</u> USE ASS'Y PROCEDURE	SIZE <u>B</u> CODE IDENT NO. <u>26805</u> SCALE <u>3:1</u> 3104-7841-00