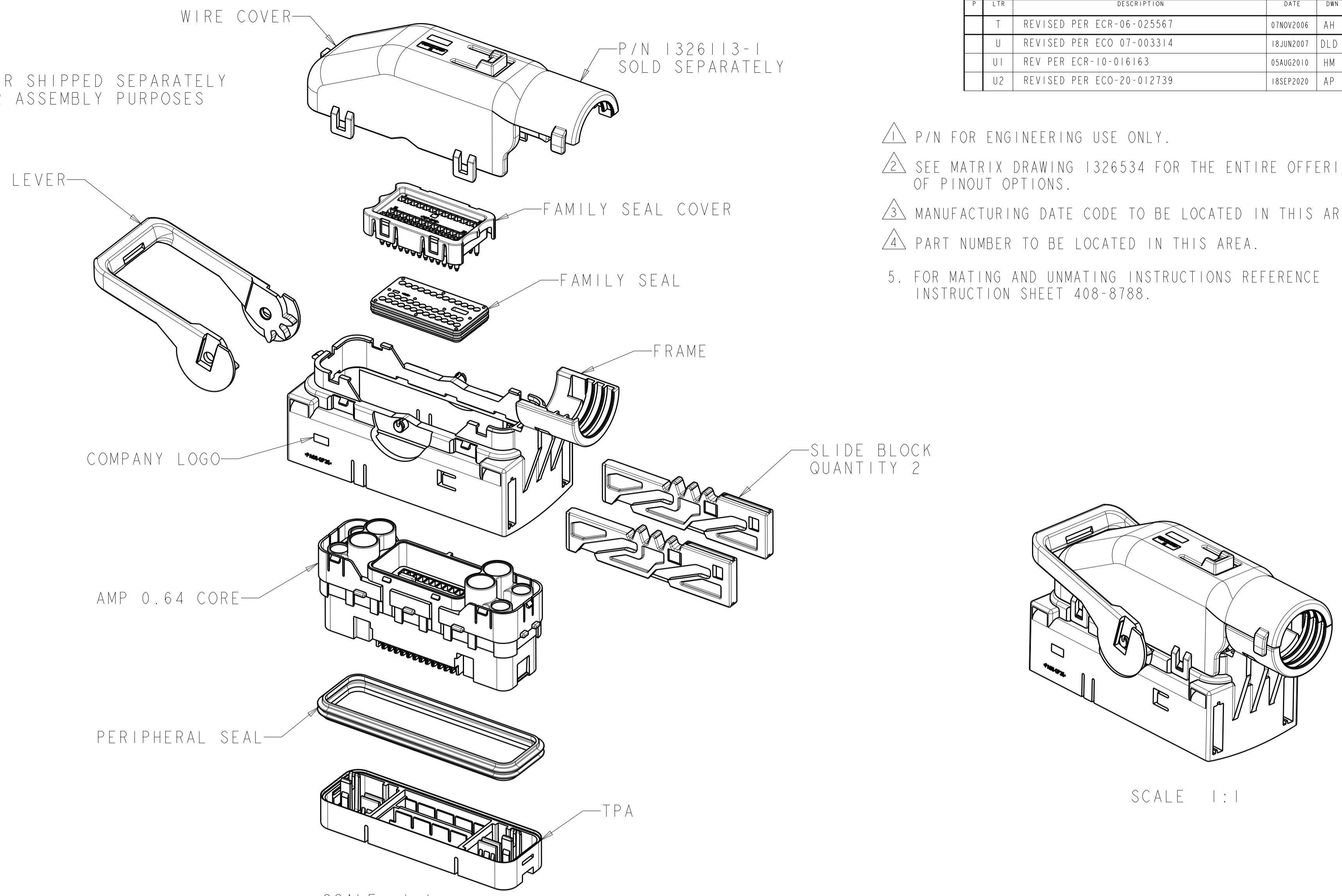
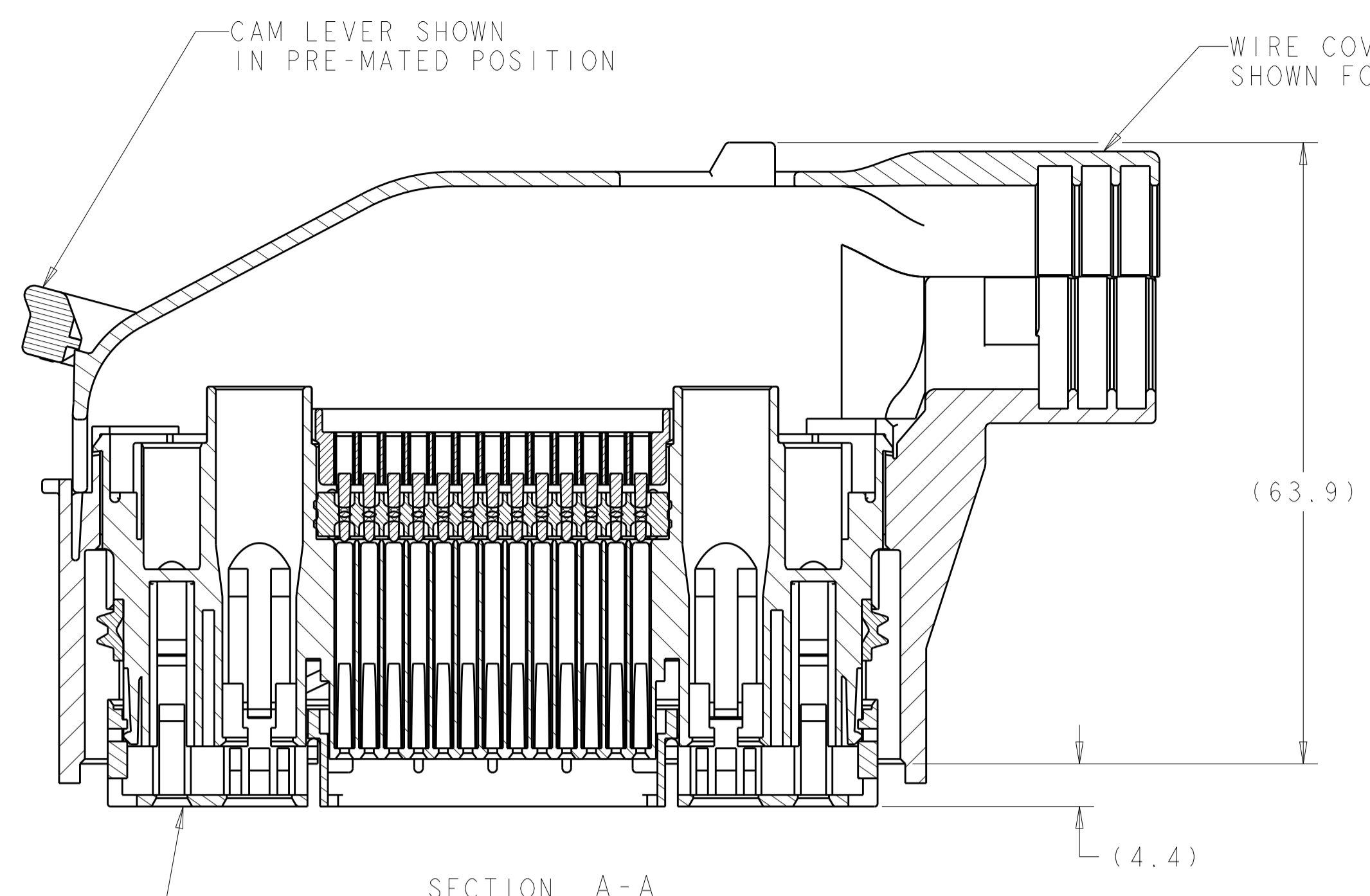
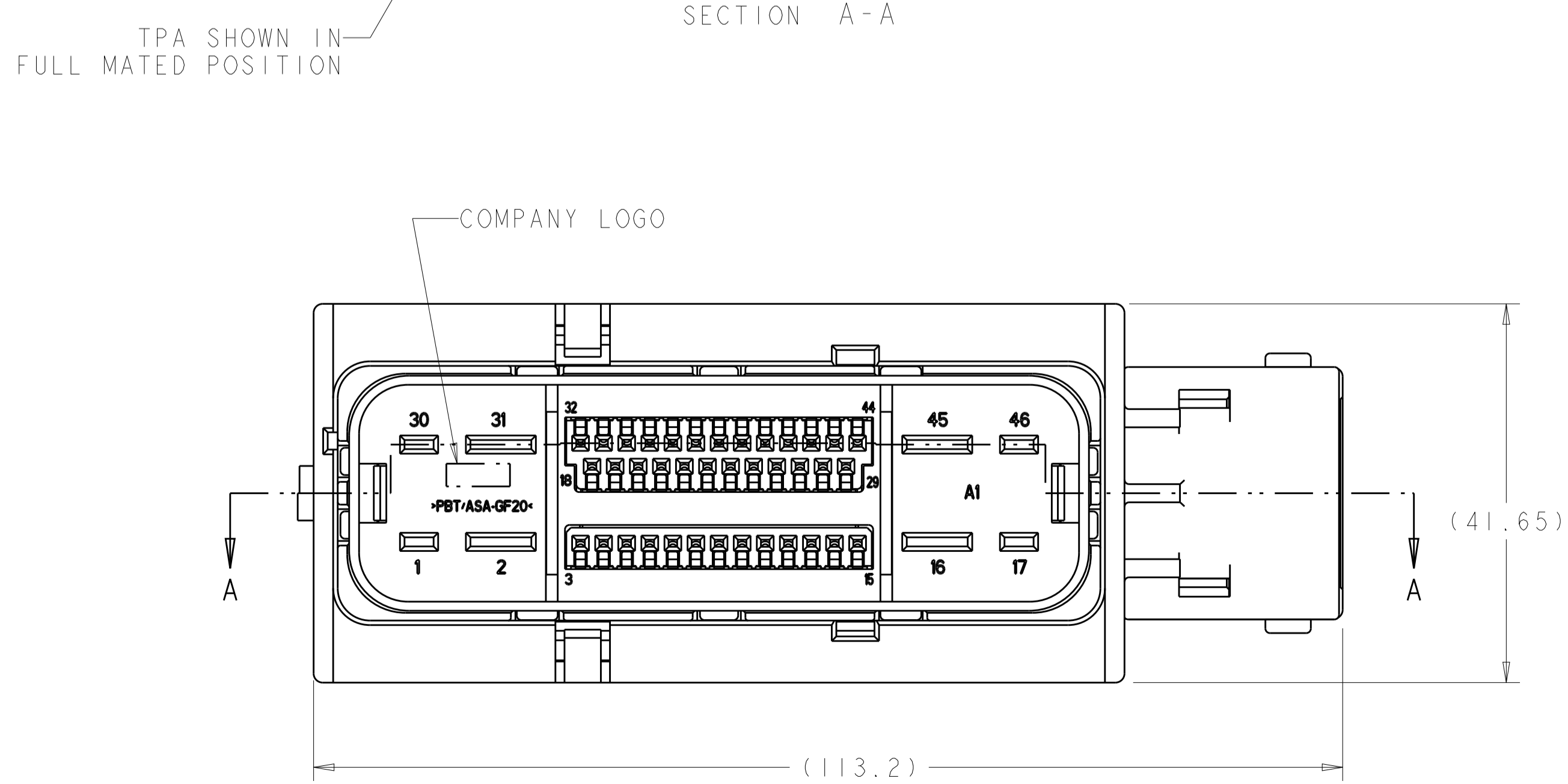
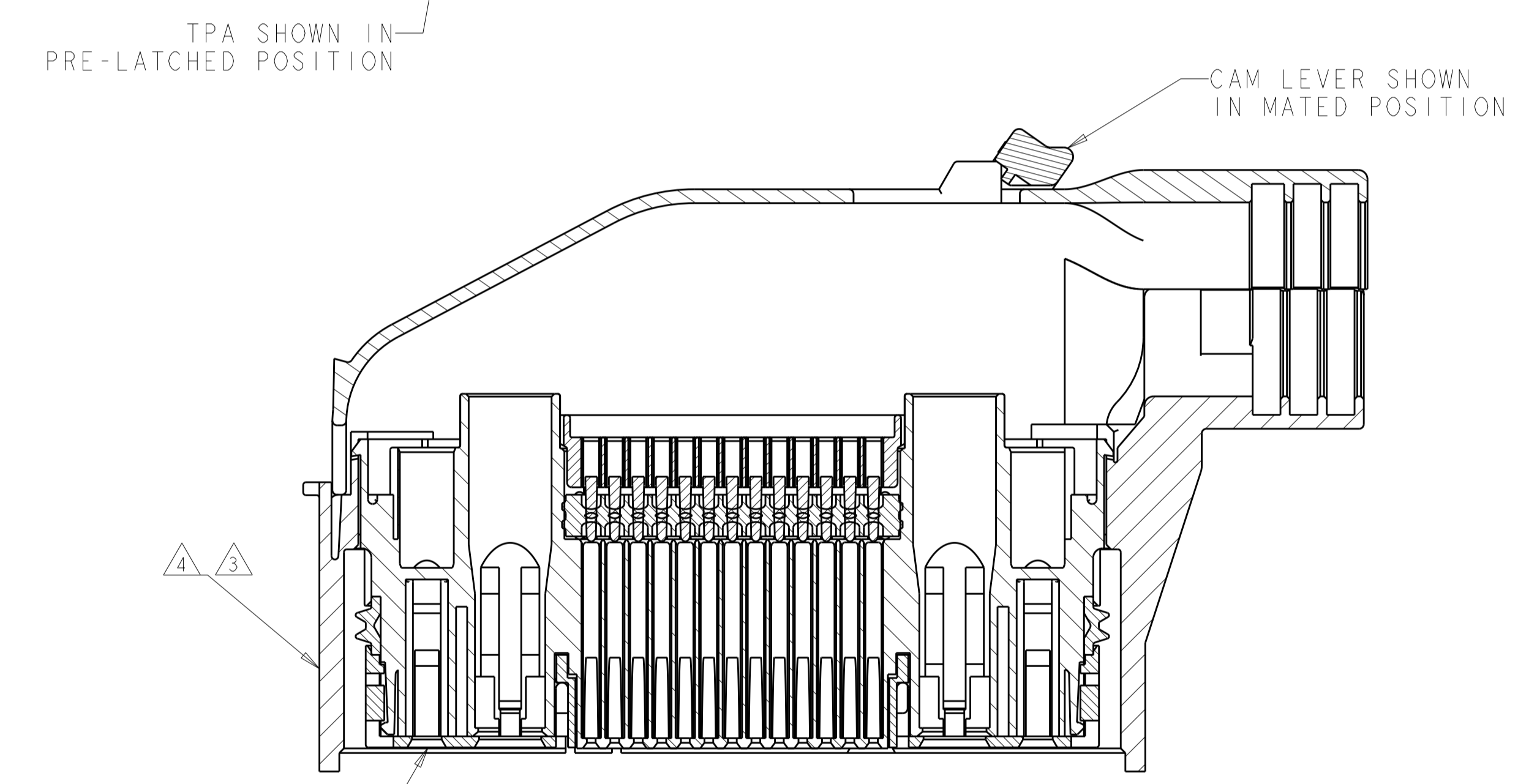


REVISIONS					
P.	LTN.	DESCRIPTION	DATE	DWN.	APVD.
T		REVISED PER ECR-06-025567	07NOV2006	AH	DBK
U		REVISED PER ECO-07-003314	18JUN2007	DLD	DBK
U1		REV PER ECR-10-016163	05AUG2010	HM	SM
U2		REVISED PER ECO-20-012739	18SEP2020	AP	DBK



- 1 P/N FOR ENGINEERING USE ONLY.
- 2 SEE MATRIX DRAWING 1326534 FOR THE ENTIRE OFFERING OF PINOUT OPTIONS.
- 3 MANUFACTURING DATE CODE TO BE LOCATED IN THIS AREA.
- 4 PART NUMBER TO BE LOCATED IN THIS AREA.
- 5. FOR MATING AND UNMATING INSTRUCTIONS REFERENCE INSTRUCTION SHEET 408-8788.



	2.8mm ALWAYS BLOCKED 6.3mm ALWAYS OPEN													6.3mm ALWAYS OPEN 2.8mm ALWAYS BLOCKED													6.3mm ALWAYS OPEN 2.8mm ALWAYS BLOCKED																				
OBSOLETE	0	3	4	5	6	7	8	9	10	11	14	15	0	17	18	19	20	21	22	23	24	25	28	29	30	0	33	34	35	36	37	38	39	40	43	44	0	46	2-1326327-8								
	1	0				7	8	9						0	17	18	19	20	21							30	0	33	34	35	36					0	46	2-1326327-7									
OBSOLETE	0	3	4	5	6	7	8	9	10	11	14	15	0	17	18	19	20	21	22	23	24	25	28	29	30	0	33	34	35	36	37	38	39	40	43	44	0	46	2-1326327-6								
OBSOLETE	0	3	4	5	6	7	8	9	10	11	14	15	0	17	18	19	20	21	22	23	24	25	28	29	30	0	33	34	35	36	37	38	39	40	43	44	0	46	2-1326327-9								
	1	0	3	4	5	6	7	8	9	10	11	14	15	0	17	18	19	20	21	22	23	24	25	28	29	30	0	33	34	35	36	37	38	39	40	43	44	0	46	1-1326327-8							
	1	0	3	4	5	6	7	8	9	10	11	14	15	0	17	18	19	20	21	22	23	24	25	28	29	30	0	33	34	35	36	37	38	39	40	43	44	0	46	1-1326327-7							
OBSOLETE	0	3	4	5	6	7	8	9	10	11	14	15	0	17	18	19	20	21	22	23	24	25	28	29	30	0	33	34	35	36	37	38	39	40	43	44	0	46	1-1326327-1								
	1	0	3	4	5	6	7	8	9	10	11	14	15	0	17	18	19	20	21	22	23	24	25	28	29	30	0	33	34	35	36	37	38	39	40	43	44	0	46	1-1326327-0							
OBSOLETE	0	3	4	5	6	7	8	9	10	11	14	15	0	17	18	19	20	21	22	23	24	25	28	29	30	0	33	34	35	36	37	38	39	40	43	44	0	46	1326327-9								
	1	0	3	4	5	6	7	8	9	10	11	14	15	0	17	18	19	20	21	22	23	24	25	28	29	30	0	33	34	35	36	37	38	39	40	43	44	0	46	1326327-8							
OBSOLETE	0	3	4	5	6	7	8	9	10	11	14	15	0	17	18	19	20	21	22	23	24	25	28	29	30	0	33	34	35	36	37	38	39	40	43	44	0	46	1326327-7								
	1	0	3	4	5	6	7	8	9	10	11	14	15	0	17	18	19	20	21	22	23	24	25	28	29	30	0	33	34	35	36	37	38	39	40	43	44	0	46	1326327-6							
	1	0	3	4	5	6	7	8	9	10	11	14	15	0	17	18	19	20	21	22	23	24	25	28	29	30	0	33	34	35	36	37	38	39	40	43	44	0	46	1326327-5							
OBSOLETE	0	3	4	5	6	7	8	9	10	11	12	13	14	15	0	17	18	19	20	21	22	23	24	25	26	27	28	29	30	0	32	33	34	35	36	37	38	39	40	41	42	43	44	0	46	1326327-2	
	1	0	3	4	5	6	7	8	9	10	11	12	13	14	15	0	17	18	19	20	21	22	23	24	25	26	27	28	29	30	0	32	33	34	35	36	37	38	39	40	41	42	43	44	0	46	1326327-1
	1	2	3	4	5	6	7	8	9	10	11	12	13	14	15	16	17	18	19	20	21	22	23	24	25	26	27	28	29	30	31	32	33	34	35	36	37	38	39	40	41	42	43	44	45	46	PART NUMBER

BLANK CIRCUITS = OPEN CAVITIES; CIRCUITS NUMBERED "0" = ALWAYS OPEN CAVITIES
 NUMBERED CIRCUITS = BLOCKED CAVITIES

DIMENSIONS: mm		TOLERANCES UNLESS OTHERWISE SPECIFIED:	
0 PLC	±0.10	0.50	±0.05
1 PLC	±0.10	0.50	±0.05
2 PLC	±0.10	0.50	±0.05
3 PLC	±0.10	0.50	±0.05
4 PLC	±0.10	0.50	±0.05
ANGLES	±0.05		

THIS DRAWING IS A CONTROLLED DOCUMENT. DWG: A1_GRAFF 03JUN2002
 CHK: JI_TONEY 03JUN2002
 APVD: JI_TONEY 03JUN2002

MATERIAL: - FINISH: -

WEIGHT: - CUSTOMER DRAWING

NAME: PLUG ASSEMBLY, 46 POSITION, WITH CHANGEABLE CORE, EBC-440
 2.8 TERMINAL POSITIONS BLOCKED

SIZE: A1 00779 C=1326327

SCALE: 2:1 SHEET 1 OF 1 REV: U2