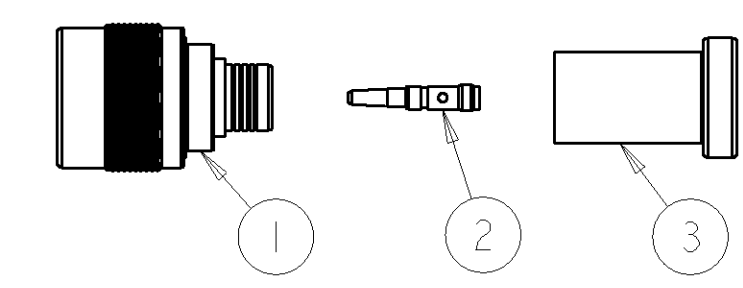
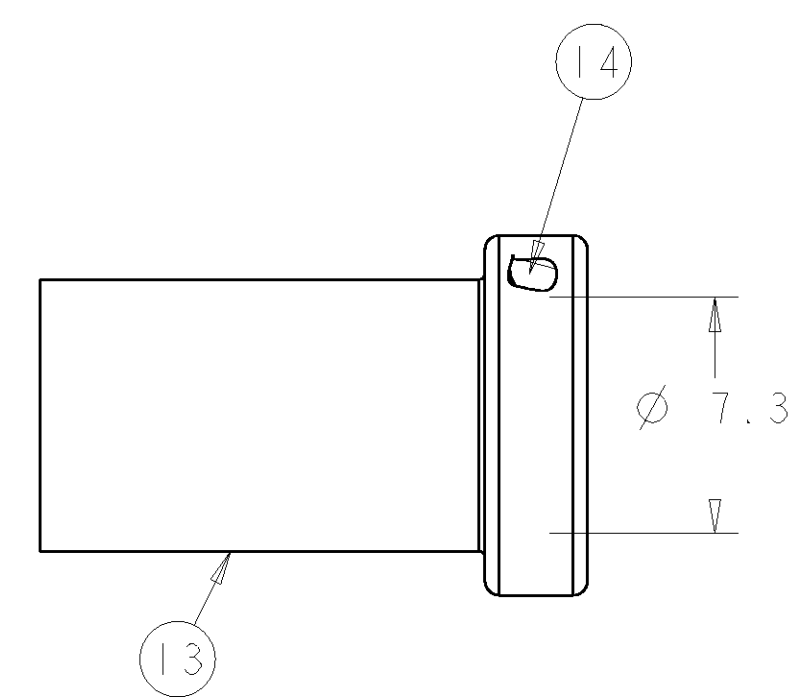
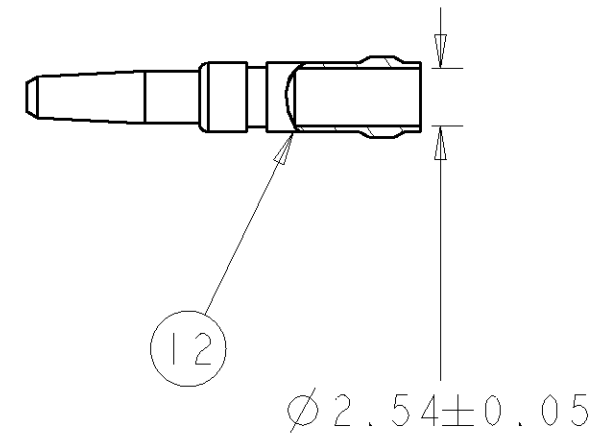
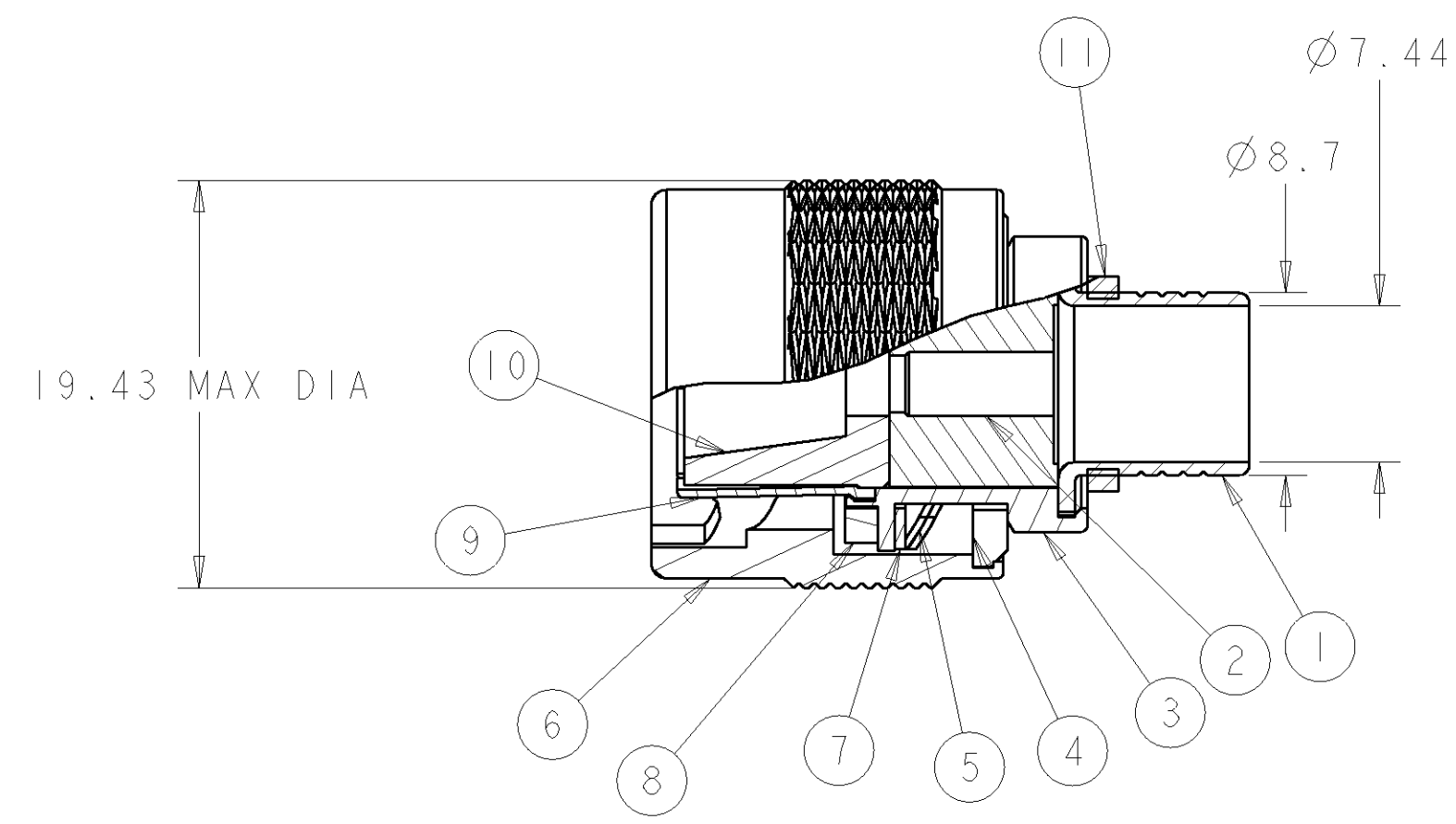


THIS DRAWING IS UNPUBLISHED. RELEASED FOR PUBLICATION 20
 © COPYRIGHT 20 BY TYCO ELECTRONICS CORPORATION. ALL RIGHTS RESERVED.

LOC	DIST	REVISIONS					
B	E	P	LTR	DESCRIPTION	DATE	DWN	APVD
		H		ECR-08-009407	14/04/08	MJG	JA



NOTES:

- ① ELECTROPLATE SILVER (TARNISH RESISTANT)
- ② ELECTROPLATE GOLD OVER NICKEL
- ③ ELECTROPLATE NICKEL
- 4. FOR USE ON CABLE FILECA 1703/3
- 5. CRIMP WITH HAND TOOL 220015-1
- 6. PRODUCT WEIGHT APPROX 28g

QTY	FINISH	MATERIAL	DESCRIPTION	ITEM	DESCRIPTION	COMPONENT
1	NONE	SILICONE RUBBER	SEAL	14	FERRULE	3
1	①	COPPER	FERRULE	13	CONTACT	2
1	②	BRASS	CONTACT	12		
1	NONE	SILICONE RUBBER	SEAL	11		
1	NONE	PTFE	DIELECTRIC	10		
1	①	BeCu	OUTER CONTACT	9		
1	NONE	SILICONE RUBBER	GASKET	8		
1	NONE	PTFE	SPLIT WASHER	7		
1	①	BRASS	COUPLING NUT	6		
2	①	BeCu	SPRING WASHER	5		
2	③	BRASS	HALF WASHER	4		
1	①	BRASS	BODY	3		
1	NONE	PTFE	DIELECTRIC	2		
1	①	BRASS	INNER FERRULE	1		

THIS DRAWING IS A CONTROLLED DOCUMENT FOR TYCO ELECTRONICS CORPORATION. IT IS SUBJECT TO CHANGE AND THE CONTROLLING ENGINEERING ORGANIZATION SHOULD BE CONTACTED FOR THE LATEST REVISION.

DWN: M. GREENER 06NOV2007
 CHK: J. AMBROSE 06NOV2007
 APVD: J. AMBROSE 06NOV2007

Tyco Electronics Tyco Electronics UK Ltd.
 Bideford, North Devon, EX39 4HE

NAME: C SERIES STRAIGHT PLUG CRIMP
 50 OHM
 CABLE FILECA 1703/3

SIZE: A2 CAGE CODE: 108-12005 DRAWING NO: 134013 RESTRICTED TO: -

WEIGHT: 28g

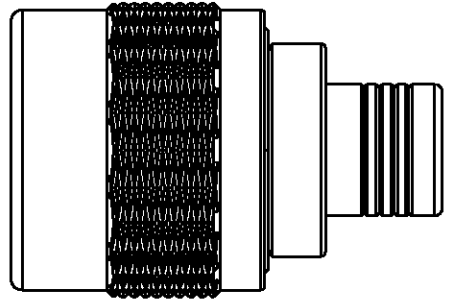
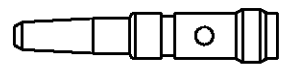
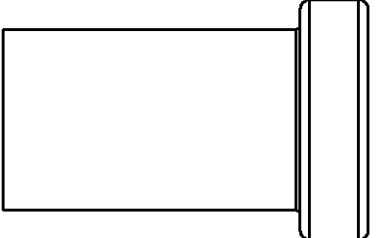
MATERIAL: SEE TABLE

CUSTOMER DRAWING

SCALE: NTS SHEET 1 OF 2 REV H

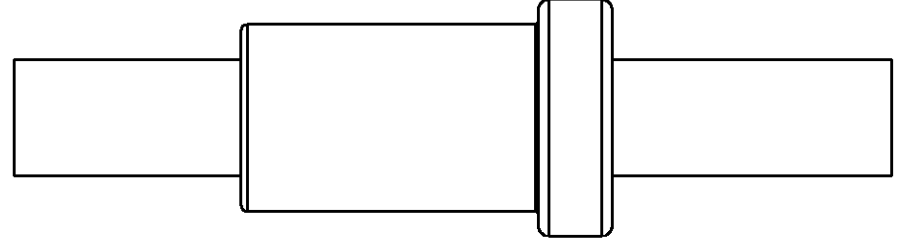
THIS DRAWING IS UNPUBLISHED. RELEASED FOR PUBLICATION 20
 © COPYRIGHT 20 BY TYCO ELECTRONICS CORPORATION. ALL RIGHTS RESERVED.

LOC	DIST	REVISIONS					
B	E	P	LTR	DESCRIPTION	DATE	DWN	APVD
		-		SEE SHEET 1	-	-	-

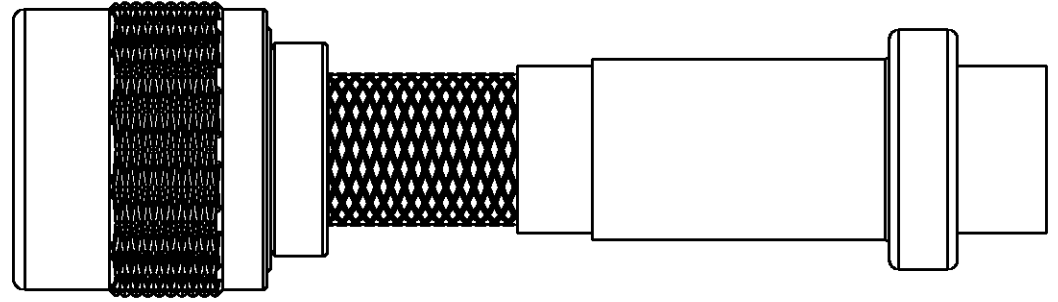
COMPONENTS			
	MAIN BODY	CONTACT	FERRULE
			

FOR CABLE SEE FRONT SHEET

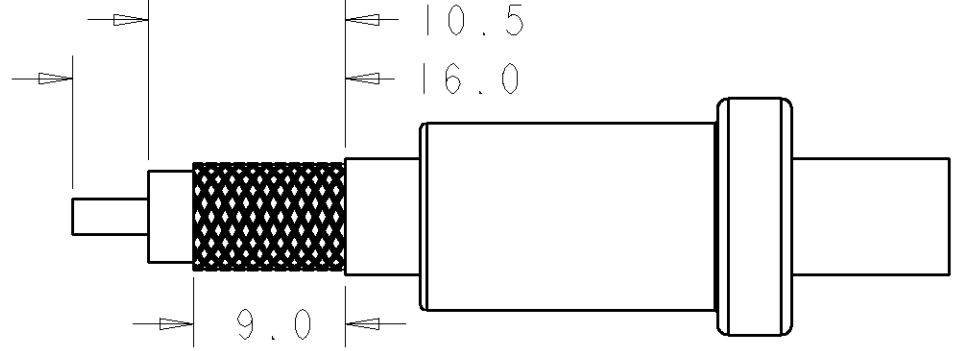
STEP 1:
1. SLIDE FERRULE OVER CABLE



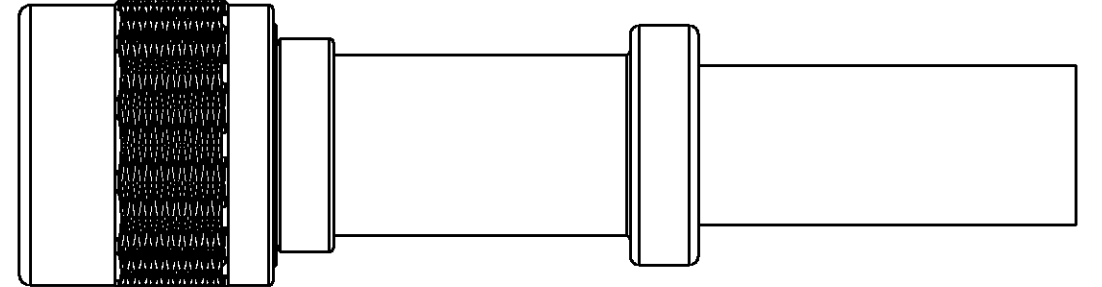
STEP 4:
1. PRESS CABLE SUB ASSEMBLY INTO BODY UNTIL CONTACT IS FULLY LOCATED ON DIELECTRIC
2. ENSURE THE KNURLED FERRULE INSERTS BETWEEN THE DIELECTRIC AND CABLE BRAID



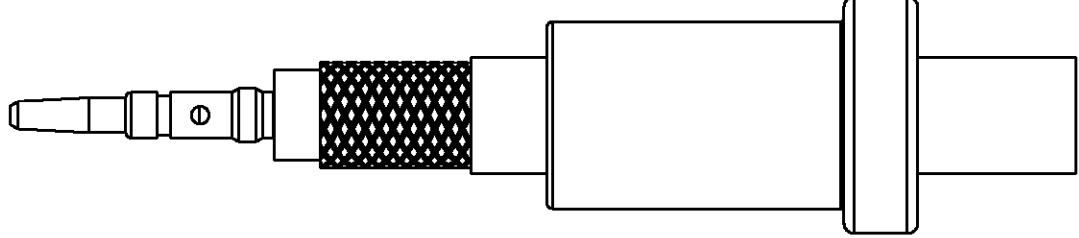
STEP 2:
1. STRIP CABLE TO DIMENSIONS SHOWN
2. OPTIONAL TINNING OF CONTACT HERE REQUIRED

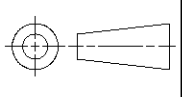


STEP 5:
1. SLIDE CRIMP FERRULE UNTIL IT BUTTS AGAINST THE HOUSING BODY
2. CRIMP USING TOOL 220015-1



STEP 3:
1. FIT CONTACT OVER CENTRE CONDUCTOR TO BUTT AGAINST DIELECTRIC
2. CRIMP OR SOLDER CONTACT TO CONDUCTOR



<small>THIS DRAWING IS A CONTROLLED DOCUMENT FOR TYCO ELECTRONICS CORPORATION IT IS SUBJECT TO CHANGE AND THE CONTROLLING ENGINEERING ORGANIZATION SHOULD BE CONTACTED FOR THE LATEST REVISION.</small>		DWN M. GREENER 06NOV2007 CHK J. AMBROSE 06NOV2007 APVD J. AMBROSE 06NOV2007	Tyco Electronics UK Ltd. Bideford, North Devon, EX39 4HE
DIMENSIONS: mm 	TOLERANCES UNLESS OTHERWISE SPECIFIED: 0 PLC ± 1 PLC ±0.4 2 PLC ±0.4 3 PLC ±0.4 4 PLC ± ANGLES ±2 FINISH	PRODUCT SPEC - APPLICATION SPEC - WEIGHT - CUSTOMER DRAWING	NAME C SERIES STRAIGHT PLUG CRIMP 50 OHM CABLE FILECA 1703/3 SIZE A200779 CAGE CODE G-134013 DRAWING NO - RESTRICTED TO - SCALE NTS SHEET 2 OF 2 REV H