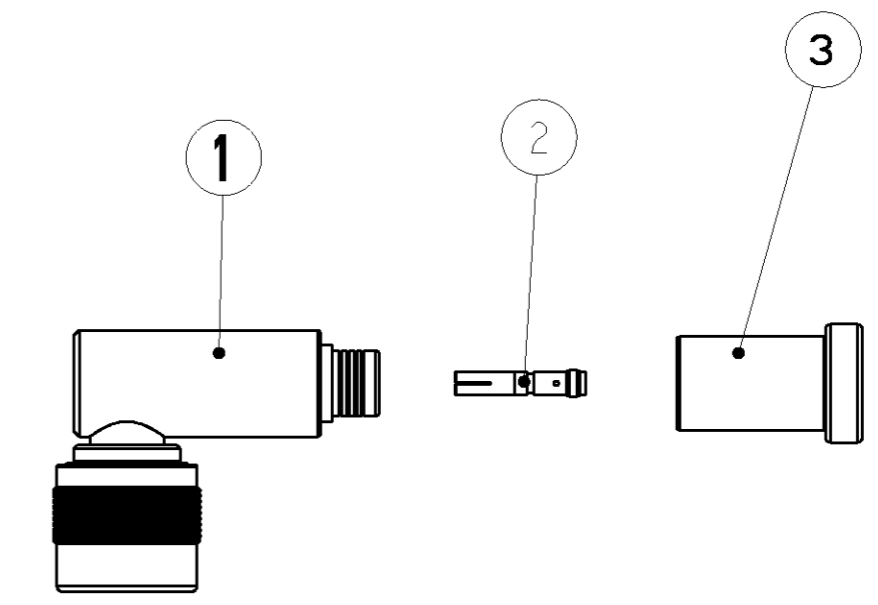
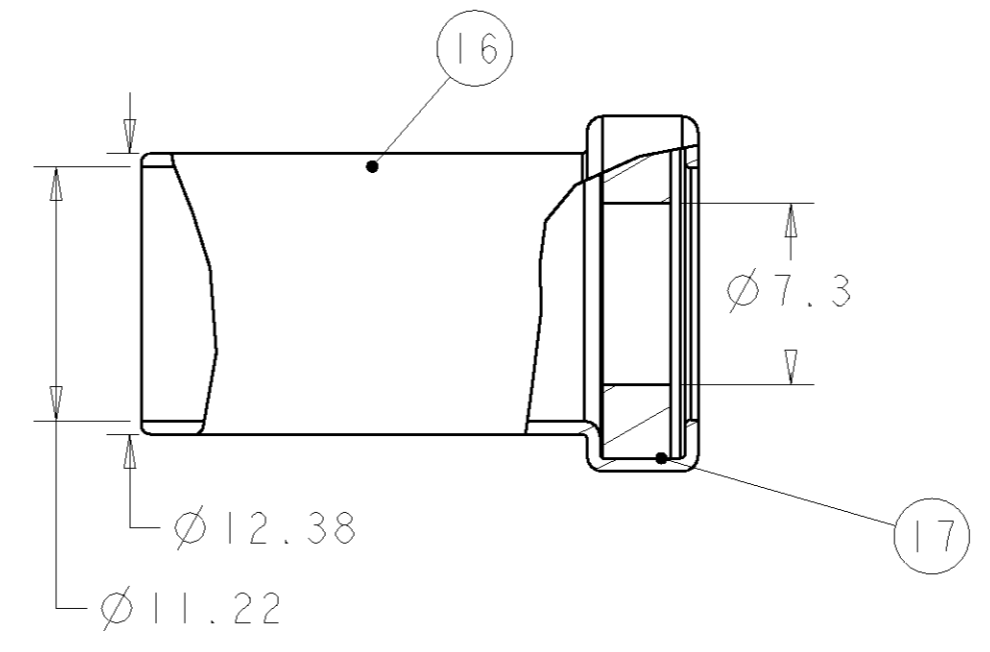
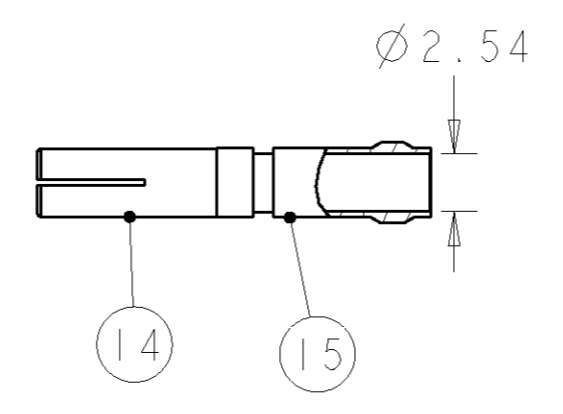
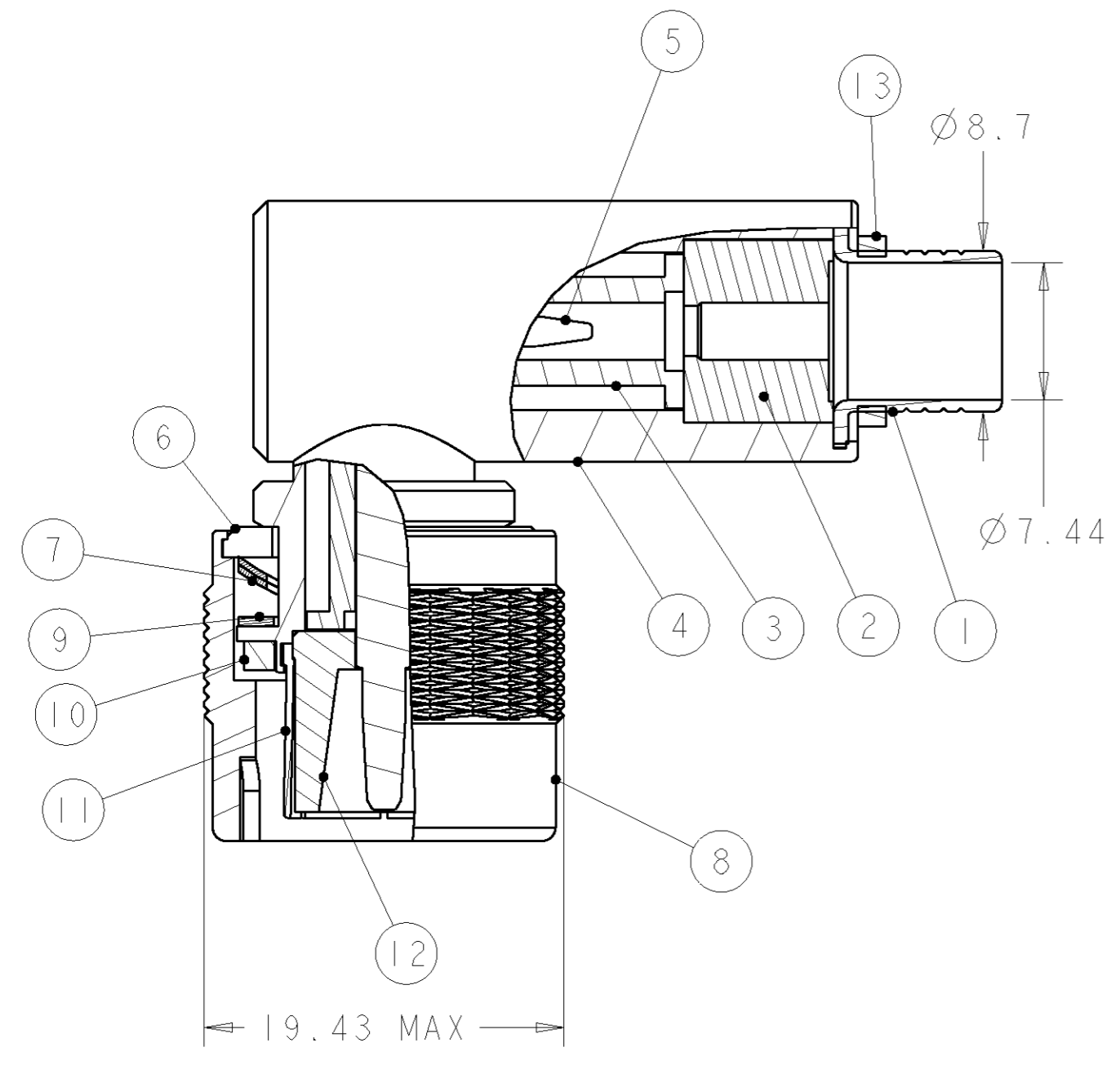


THIS DRAWING IS UNPUBLISHED. RELEASED FOR PUBLICATION 20
 © COPYRIGHT 20 BY TYCO ELECTRONICS CORPORATION. ALL RIGHTS RESERVED.

LOC	DIST	REVISIONS					
B	E	P	LTR	DESCRIPTION	DATE	DWN	APVD
		C		ECR-08-009407	15/04/08	MJG	JA
		D		ECR-08-015458	18/06/08	MJG	JA



NOTES:

- ① ELECTROPLATE SILVER (TARNISH RESISTANT)
- ② ELECTROPLATE GOLD OVER NICKEL
- ③ ELECTROPLATE NICKEL
- 5. FOR USE ON CABLE FILECA F1703/3
- 6. CRIMP WITH HAND TOOL 220015-1
- 7. PRODUCT WEIGHT APPROX 60g

QTY	FINISH	MATERIAL	DESCRIPTION	ITEM	DESCRIPTION	COMPONENT	
1	NONE	SILICONE RUBBER	SEAL	17	PLUG ASSEMBLY RIGHT ANGLE SERIES C	FERRULE ASSY	
1	①	COPPER	FERRULE	16			3
1	②	BeCu	CONTACT	15		CONTACT	2
1	②	BRASS	CONTACT BODY	14			
1	NONE	SILICONE RUBBER	SEAL	13		PLUG ASSEMBLY RIGHT ANGLE SERIES C	1
1	NONE	PTFE	DIELECTRIC	12			
1	①	BeCu	OUTER CONTACT	11			
1	NONE	SILICONE RUBBER	GASKET	10			
1	NONE	PTFE	SPLIT WASHER	9			
1	①	BRASS	COUPLING NUT	8			
2	①	BeCu	SPRING WASHER	7			
2	③	BRASS	HALF WASHER	6			
1	②	BRASS	CONTACT	5			
1	①	BRASS	SHELL SUB ASSY	4			
2	NONE	PTFE	DIELECTRIC	3			
1	NONE	PTFE	DIELECTRIC	2			
1	①	BRASS	INNER FERRULE	1			

THIS DRAWING IS A CONTROLLED DOCUMENT FOR TYCO ELECTRONICS CORPORATION. IT IS SUBJECT TO CHANGE AND THE CONTROLLING ENGINEERING ORGANIZATION SHOULD BE CONTACTED FOR THE LATEST REVISION.

DWN: M. GREENER 30AUG2007
 CHK: J. AMBROSE 30AUG2007
 APVD: J. AMBROSE 30AUG2007

NAME: C SERIES ELBOW PLUG CRIMP WEATHERPROOF 50Ω FILECA F1703/3

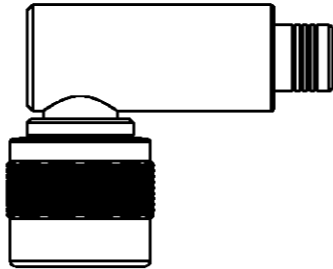
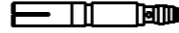
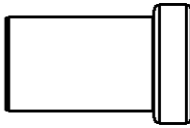
SIZE: A2 CAGE CODE: 200779 DRAWING NO: 134014

SCALE: NTS SHEET 1 OF 2 REV D

THIS DRAWING IS UNPUBLISHED. RELEASED FOR PUBLICATION 20
 © COPYRIGHT 20 BY TYCO ELECTRONICS CORPORATION. ALL RIGHTS RESERVED.

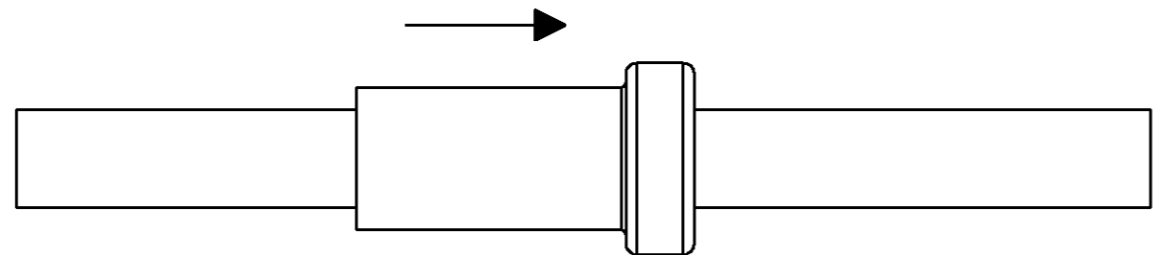
LOC	DIST	REVISIONS					
B	E	P	LTR	DESCRIPTION	DATE	DWN	APVD

COMPONENTS

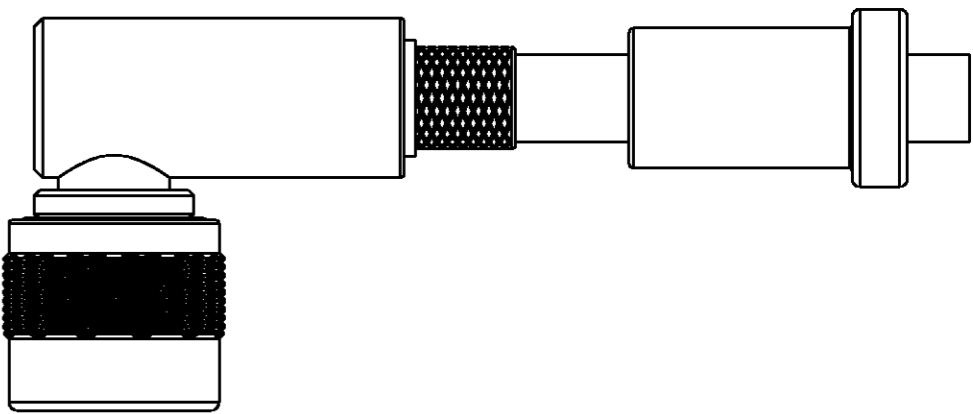
	MAIN BODY	CONTACT	FERRULE
			

FOR CABLE SEE FRONT SHEET

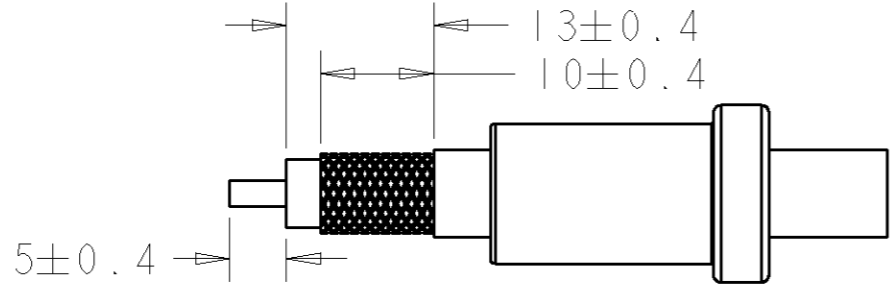
STEP 1:
1. SLIDE FERRULE OVER CABLE



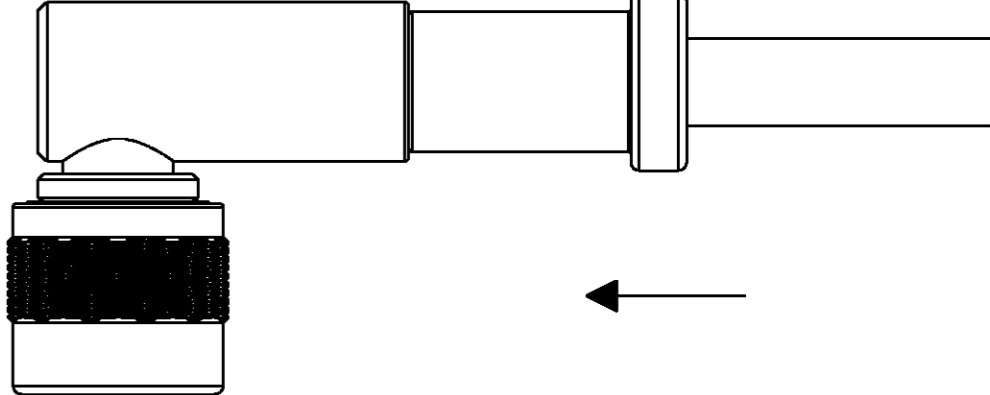
STEP 4:
1. PRESS SUB ASSEMBLY INTO BODY UNTIL CONTACT IS FULLY LOCATED ON CENTRE CONTACT (ITEM 5)
2. ENSURE THE KNURLED FERRULE INSERTS BETWEEN THE DIELECTRIC AND CABLE BRAID



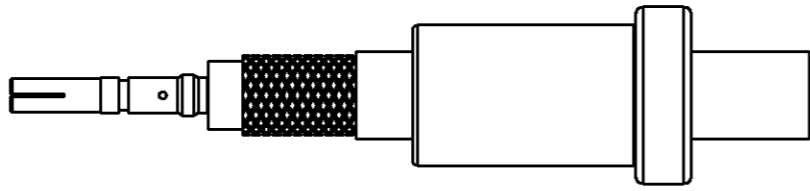
STEP 2:
1. STRIP CABLE TO DIMENSIONS SHOWN
2. OPTIONAL TINNING OF CONTACT HERE REQUIRED



STEP 5:
1. SLIDE CRIMP FERRULE UNTIL IT BUTTS AGAINST THE HOUSING BODY
2. CRIMP USING TOOL 220015-1



STEP 3:
1. FIT CONTACT OVER CENTRE CONDUCTOR TO BUTT AGAINST DIELECTRIC
2. SOLDER CONTACT TO CONDUCTOR



THIS DRAWING IS A CONTROLLED DOCUMENT FOR TYCO ELECTRONICS CORPORATION IT IS SUBJECT TO CHANGE AND THE CONTROLLING ENGINEERING ORGANIZATION SHOULD BE CONTACTED FOR THE LATEST REVISION.		DWN M. GREENER 30AUG2007	Tyco Electronics UK Ltd. Bideford, North Devon, EX39 4HE	
DIMENSIONS: mm		CHK J. AMBROSE 30AUG2007	NAME C SERIES ELBOW PLUG CRIMP WEATHERPROOF 50Ω FILECA F1703/3	
TOLERANCES UNLESS OTHERWISE SPECIFIED: 0 PLC ±0.5 1 PLC ±0.5 2 PLC ±0.5 3 PLC ±0.5 4 PLC ±0.5 ANGLES ±0.5 FINISH		APVD J. AMBROSE 30AUG2007	SIZE A200779	DRAWING NO G-134014
MATERIAL		PRODUCT SPEC	RESTRICTED TO	-
		APPLICATION SPEC	SCALE 5:1	SHEET 2 OF 2 REV C
		WEIGHT	CUSTOMER DRAWING	