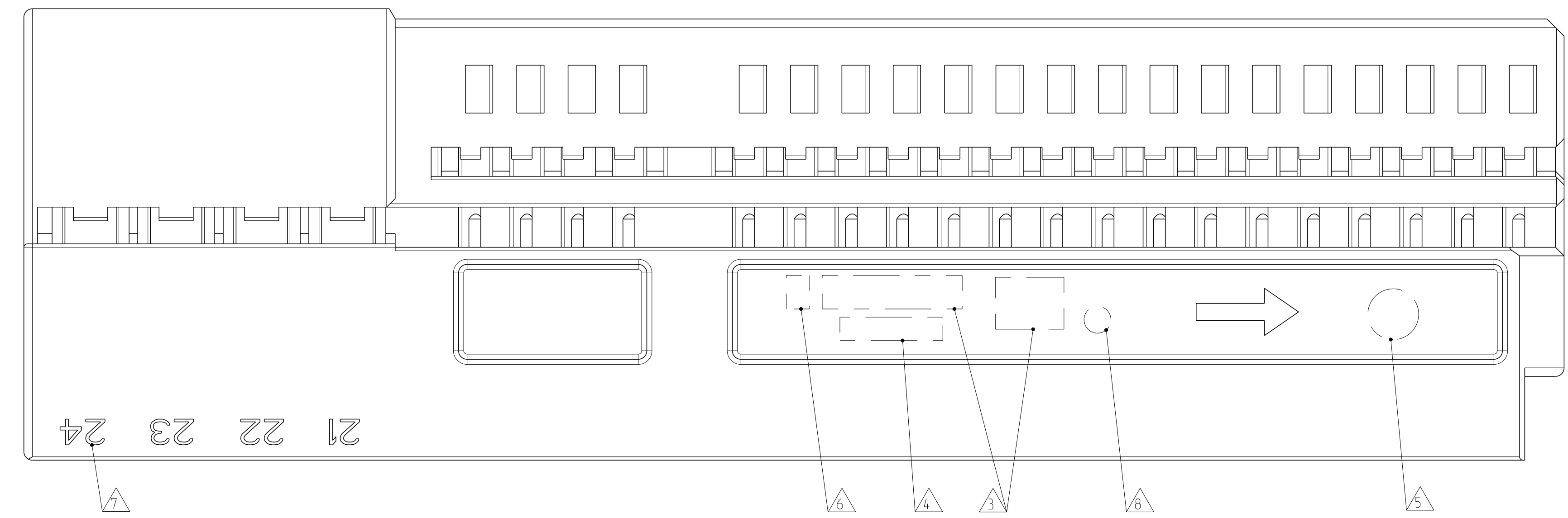
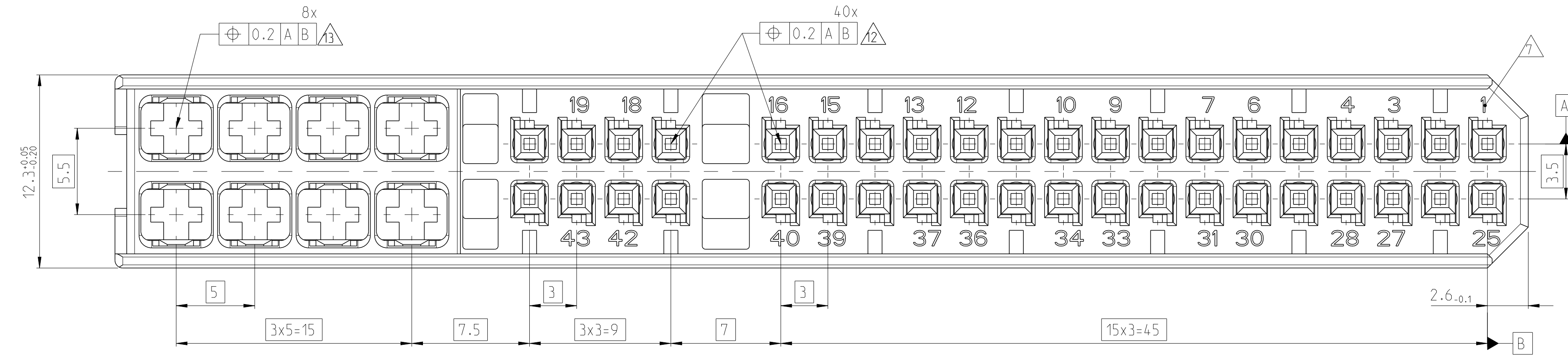
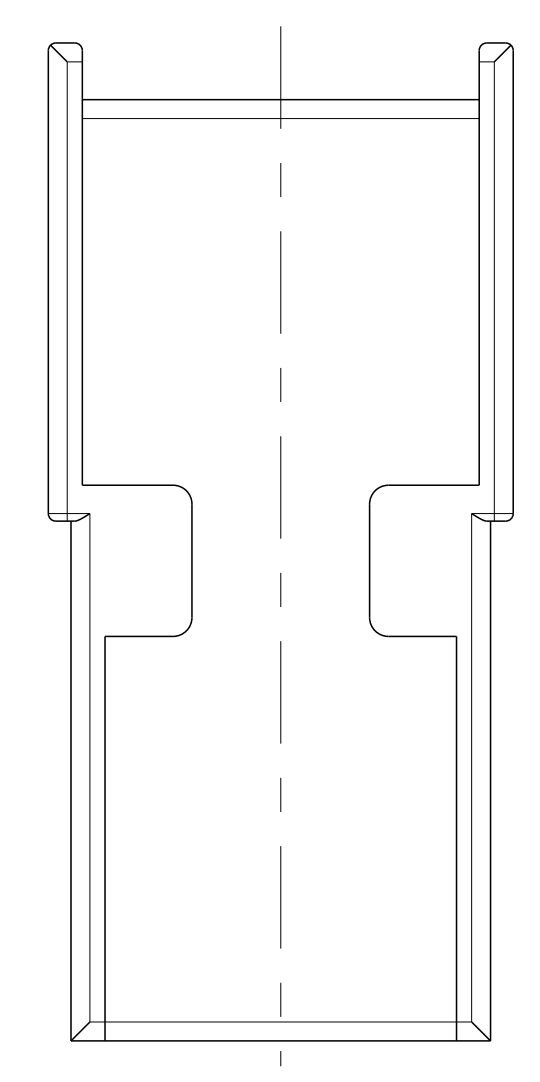
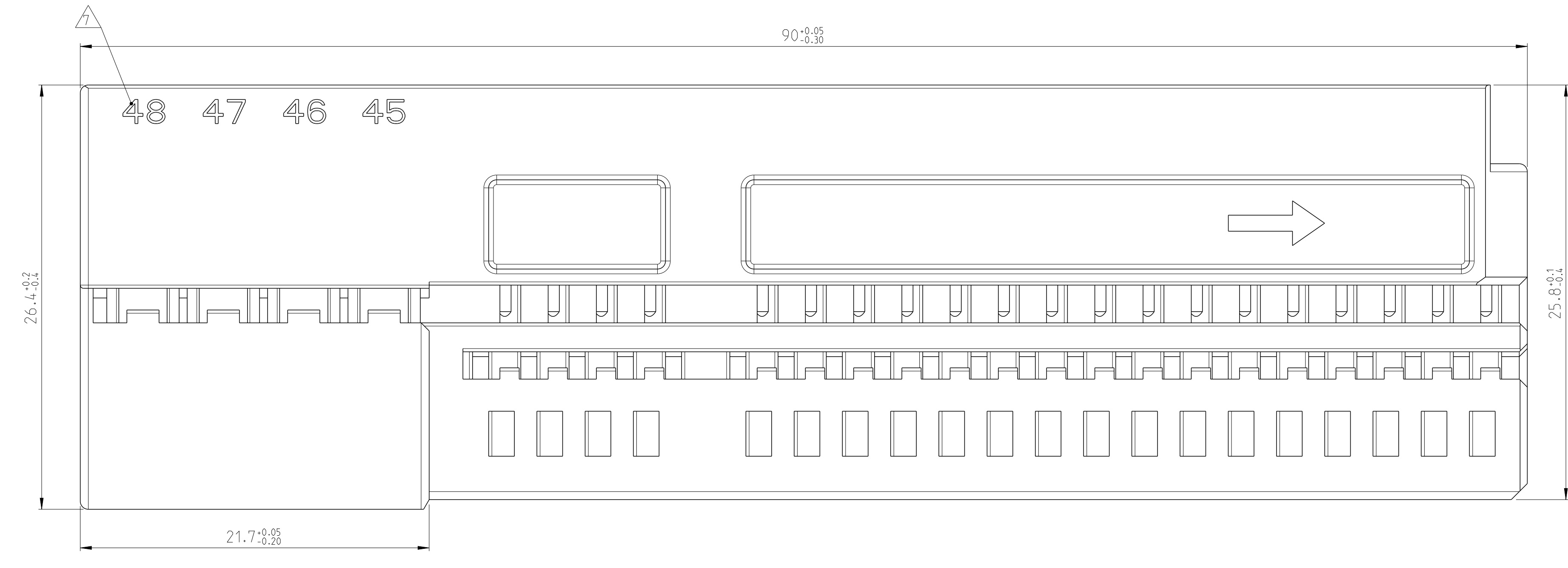
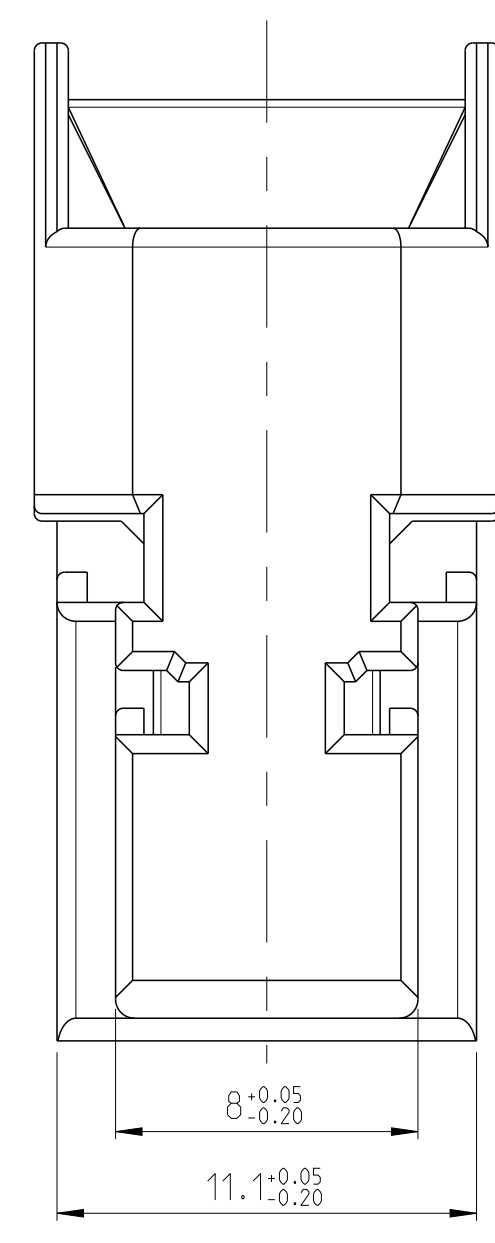
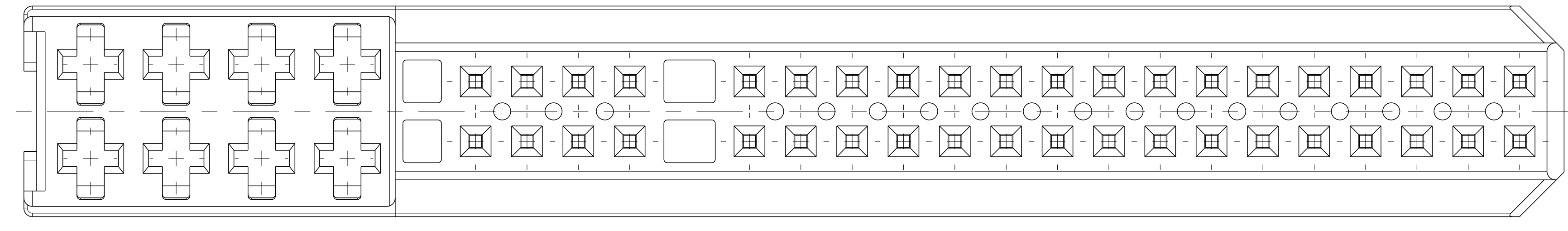
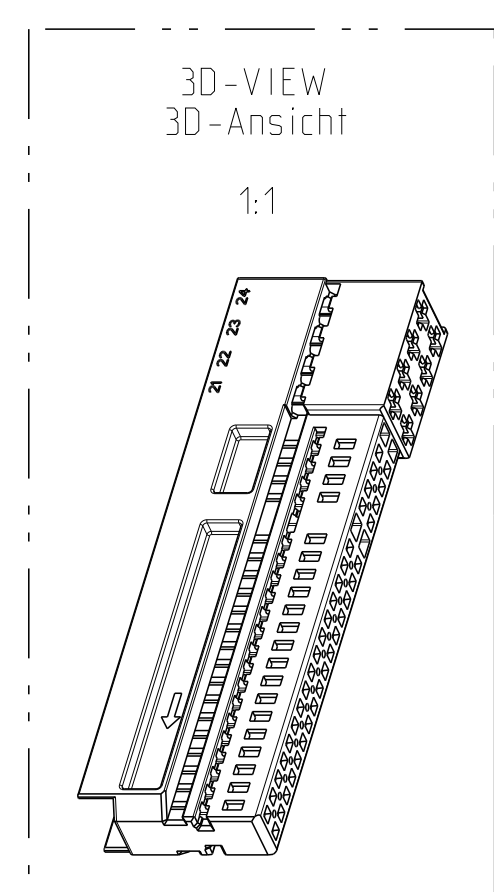


REVISONS		DATE	BY	APPD
NO.	DESCRIPTION			
A1	NEW DRAWING	07FEB2013	KSC	JW D



- NOTES  
Bemerkungen
- 0- -3 AS SHOWN  
0- -3 wie gezeichnet
  - ONLY THE GERMAN LANGUAGE VERSION IS AUTHORITATIVE  
Massgebend ist nur der deutsche Text
  - SUPPLIER-MARKING  
Lieferantenkennzeichnung
  - MATERIAL IDENTIFICATION  
Materialkennzeichnung
  - DATE MARKING  
Datumkennzeichnung
  - SUPPLIER REVISION INDEX  
Revisionsindex des Lieferanten
  - CAVITY IDENTIFICATION  
Kammerkennzeichnung
  - MOULD CAVITY MARKING: FOR FIRST MOULD ONLY. MOULD CAVITY NO. "Y"  
FOR FURTHER MOULDS X.Y  
X = MOULD NO.  
Y = MOULD CAVITY NO.  
Formstempelkennzeichnung: fuer erstes Werkzeug nur Formstempel-Nr. "Y"  
Fuer weitere Werkzeuge X.Y  
X = Werkzeug-Nr.  
Y = Formstempel-Nr.
  - MAX. WIRE SIZE 0.75 mm<sup>2</sup> FLR PERMITTED, DIN 72551-6  
MAX. INSULATION DIAMETER 1.9 mm.  
max. zulassiger Leitungsquerschnitt 0.75 mm<sup>2</sup> FLR, DIN 72551-6  
max. Aussendurchmesser Isolierung 1.9 mm.
  - MAX. WIRE SIZE 1.5 mm<sup>2</sup> FLR PERMITTED, DIN 72551-6  
MAX. INSULATION DIAMETER 2.4 mm.  
max. zulassiger Leitungsquerschnitt 1.5 mm<sup>2</sup> FLR, DIN 72551-6  
max. Aussendurchmesser Isolierung 2.4 mm.
  - REGRIND USAGE IN CLOSED LOOP PROCESSING ALLOWED  
Verwendung von Rezyklat im "close loop" Verfahren zulassig



NOTE	FEATURE	TE Connectivity - No.
	CONTACTS BY TE CONNECTIVITY Kontakte von TE Connectivity	929454
	CONTACTS BY TE CONNECTIVITY Kontakte von TE Connectivity	1355036
	PRODUCT-SPEC Produkt-Spez.	108-184.17-001
15	MATING TO HOUSING BY TE CONNECTIVITY Passend zu Gehäuse von TE Connectivity	967313

TE Connectivity	REV	Masse [kg]	Werkstoff	Rezyklatanteil	schwarz/BLACK
1355333-3	A	0.015	PBT-GF15	max. 25%	aehnl./SIM. RAL 9011
Bestell-Nr.		MASS [kg]	MATERIAL	REGRIND	Oberflaeche/Farbe
ORDER-NO.					SURFACE/CLOUR

THIS DRAWING IS A CONTROLLED DOCUMENT. Diese Zeichnung ist ein kontrolliertes Dokument.		DATE: 07 JAN 2013	BY: K. Schaffrit	APPD: D. Mechtel
DESIGNER: D. Mechtel	ENGINEER: D. Mechtel	DATE: 07 JAN 2013	BY: K. Schaffrit	APPD: D. Mechtel
PRODUCT SPEC: 108-184.17-001	PROJECT SPEC: 108-184.17-001	SCALE: 1:1	CUSTOMER DRAWING	SCALE: 1:1
MATERIAL: PBT-GF15	APPLICATION SPEC: VERBODEN TOEGANG	SIZE: A0	CASE CODE: 000779	SCALE: 1:1
CUSTOMER DRAWING		SCALE: 1:1	SHEET: 1	REV: A

**STE** TE Connectivity  
 SOCKET HOUSING, 48 POS.  
 Buchsengehaeuse, 48 pol.