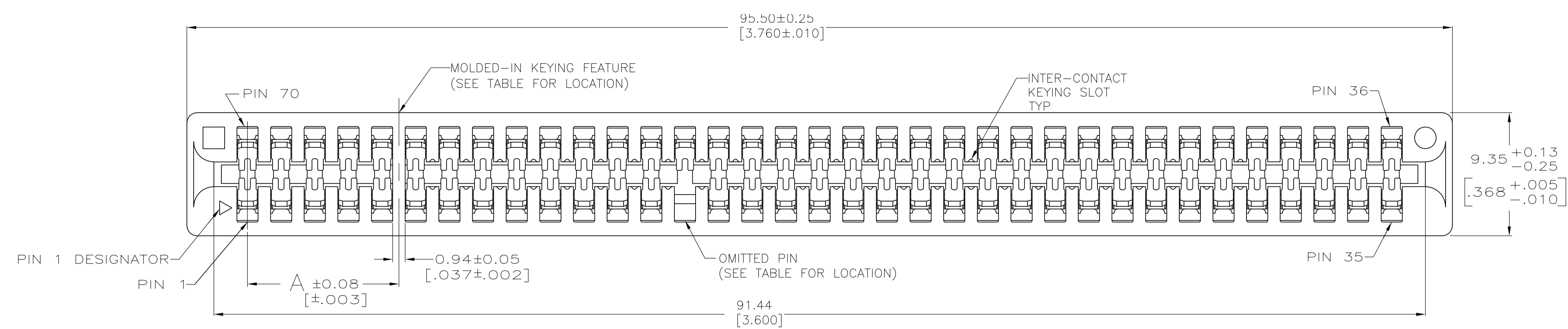
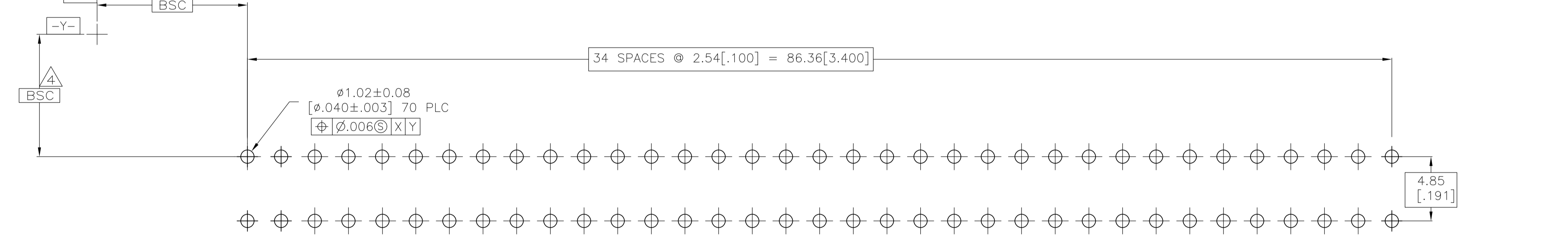
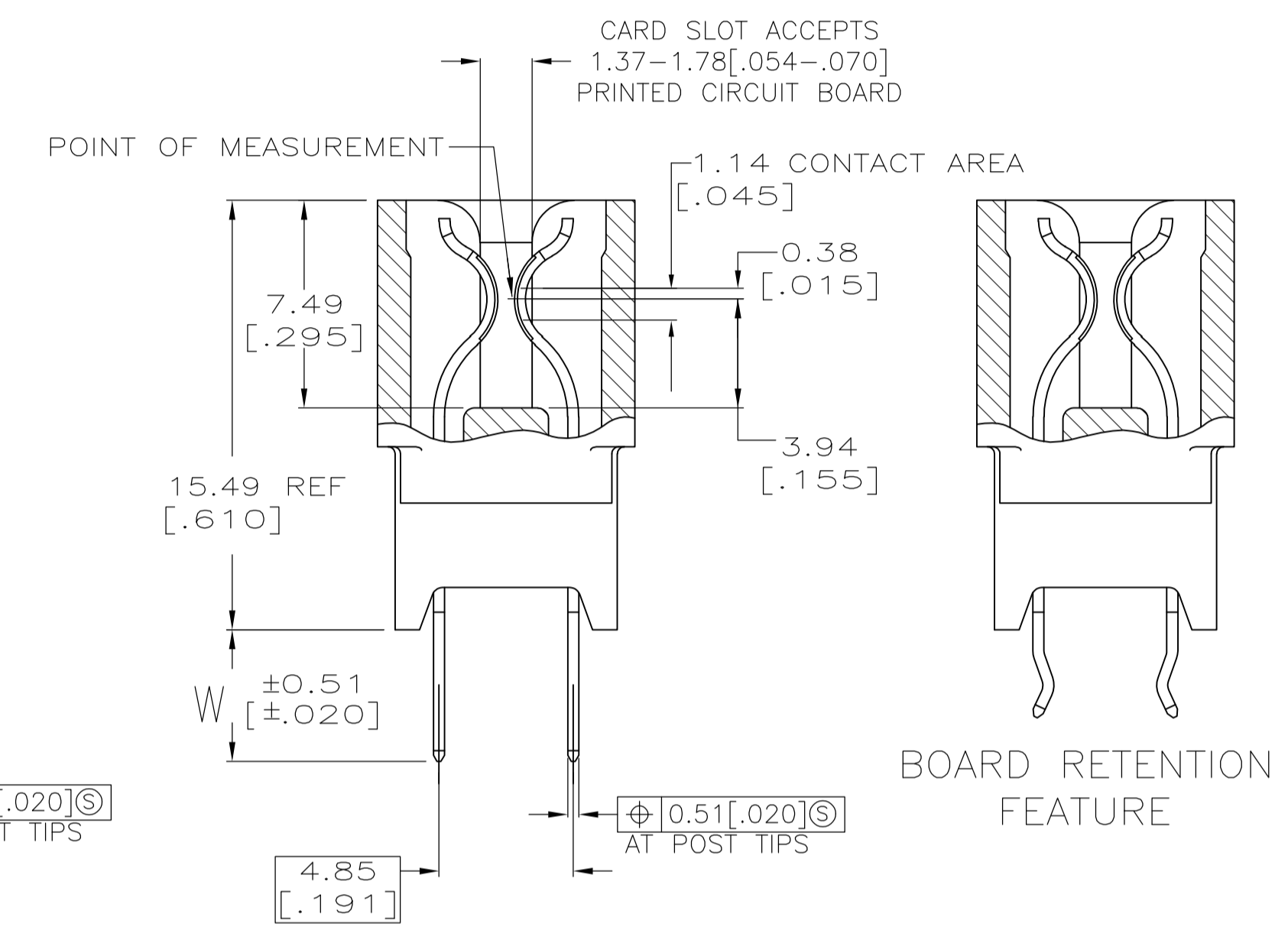
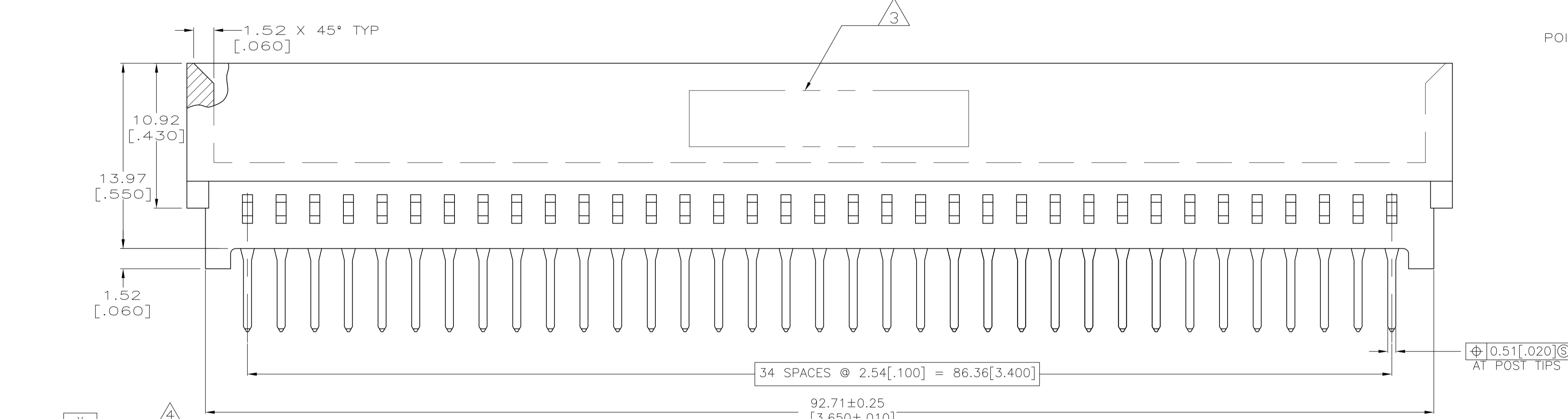


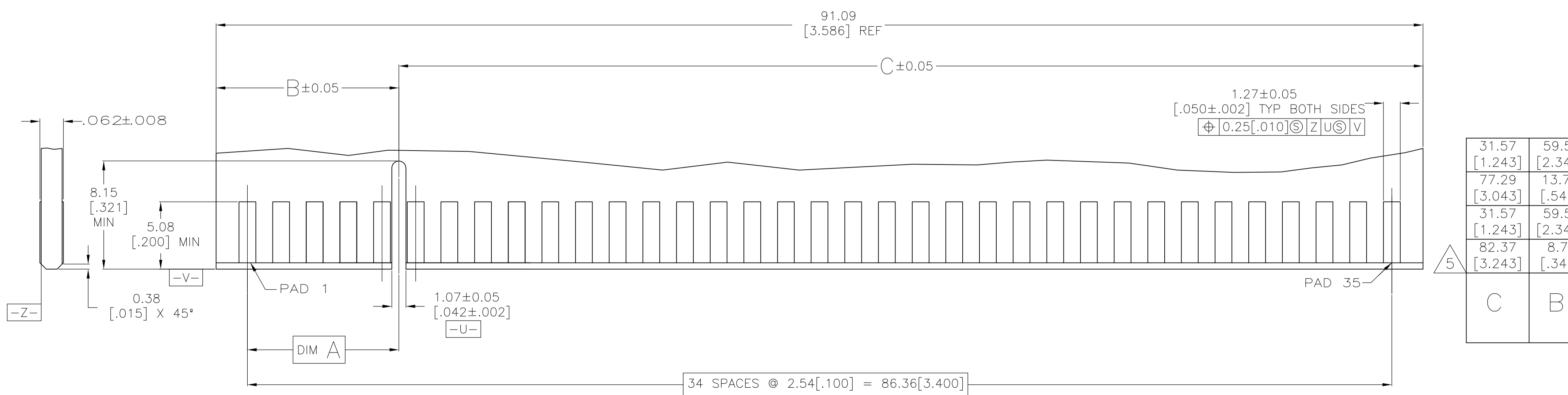
LOC		DIST		REVISIONS			
P	LTR	DESCRIPTION	DATE	DN	APVD		
L1	REV PER	ECO-09-021826	07JAN10	KK	AEG		



- MATERIAL:
HOUSING: GLASS FILLED POLYESTER; COLOR: BLACK.
CONTACT: PHOS BRONZE
- FINISH:
0.00076[.000030] MIN GOLD PLATE IN CONTACT AREA,
0.00254[.000100] MIN TIN-LEAD ON SOLDER POSTS, ALL
OVER 0.00127[.000050] MIN NICKEL
- AMP LOGO, TE PART NUMBER, DATE CODE AND CSA LOGO INK STAMPED WHITE (HOT STAMPED OR LAZER PRINTED) IN THE APPROXIMATE AREA SHOWN, EITHER SIDE PERMISSABLE, WHEN HOUSING SIZE PERMITS
- DATUMS AND BASIC DIMENSIONS ESTABLISHED BY CUSTOMER
- OBsolete PARTS: OBsolete CIS STREAMLINING PER D.RENAUD/D.SINISI



RECOMMENDED PC BOARD HOLE LAYOUT



RECOMMENDED MATING BOARD EDGE CONFIGURATION

SUPERCEDED	145539-6
SUPERCEDED	145539-4
OBsolete	145539-3

PART NUMBER

C	B	A	RETENTION FEATURE LOCATION	W	OMITTED PIN	MOLDED-IN KEYING FEATURE LOCATED BETWEEN PINS	NO OF POSN	PART NUMBER
31.57 [1.243]	59.51 [2.343]	57.15 [2.250]	2,3,33,34,37,38,68,69	3.18 [.125]	-	23,24	35	145539-7
77.29 [3.043]	13.79 [.543]	11.43 [.450]	2,3,33,34,37,38,68,69	3.18 [.125]	67	5,6	35	145539-5
31.57 [1.243]	59.51 [2.343]	57.15 [2.250]	-	3.81 [.150]	14	23,24	35	145539-2
82.37 [3.243]	8.71 [.343]	6.35 [.250]	-	3.81 [.150]	5	3,4	35	145539-1

THIS DRAWING IS A CONTROLLED DOCUMENT.

DIMENSIONS: mm [INCHES]

TOLERANCES UNLESS OTHERWISE SPECIFIED:

0 PLC	±	-
1 PLC	±	-
2 PLC	±	0.13 [005]
3 PLC	±	-
4 PLC	±	-
ANGLES	±	°

MATERIAL: SEE NOTE 1

FINISH: SEE NOTE 2

THIS DRAWING IS A CONTROLLED DOCUMENT.

DIN M.M./L.A.MAYER 26FEB2008

CHK N.NORRIS 09JUL99

APVD N.NORRIS 09JUL99

NAME: Tyco Electronics Corporation Harrisburg, PA 17105-3608

PRODUCT SPEC: 108-9039

APPLICATION SPEC: 114-13018

SIZE: A1

SCALE: 5:1

SHEET: 1 of 1

REV: 1

CUSTOMER DRAWING