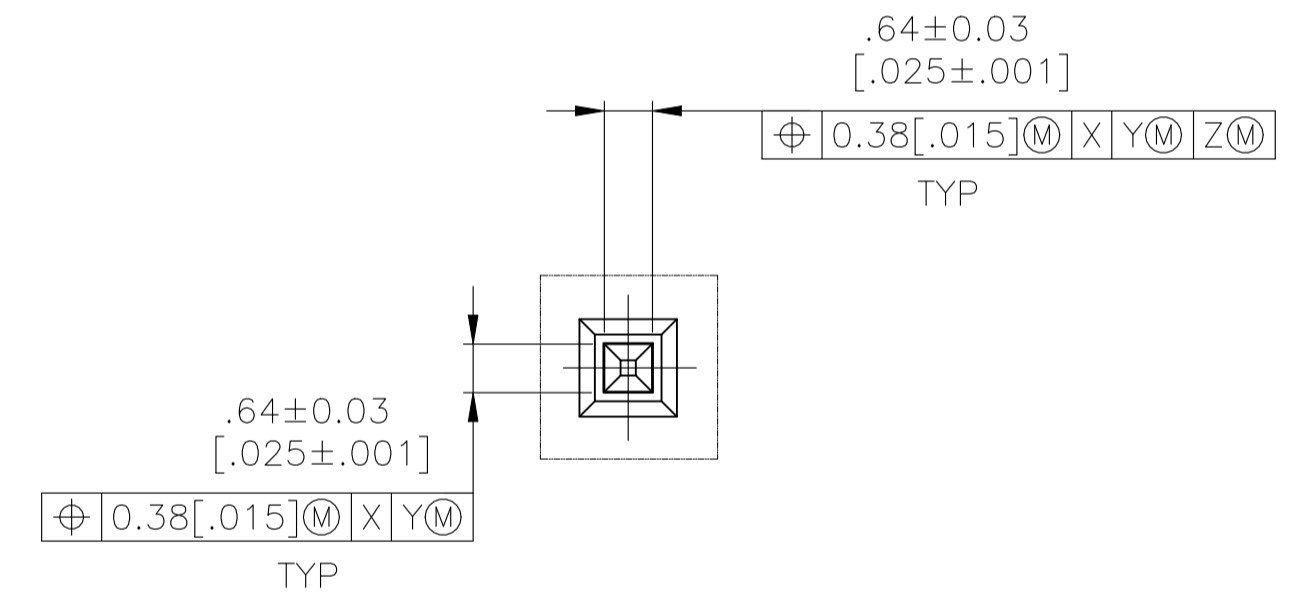
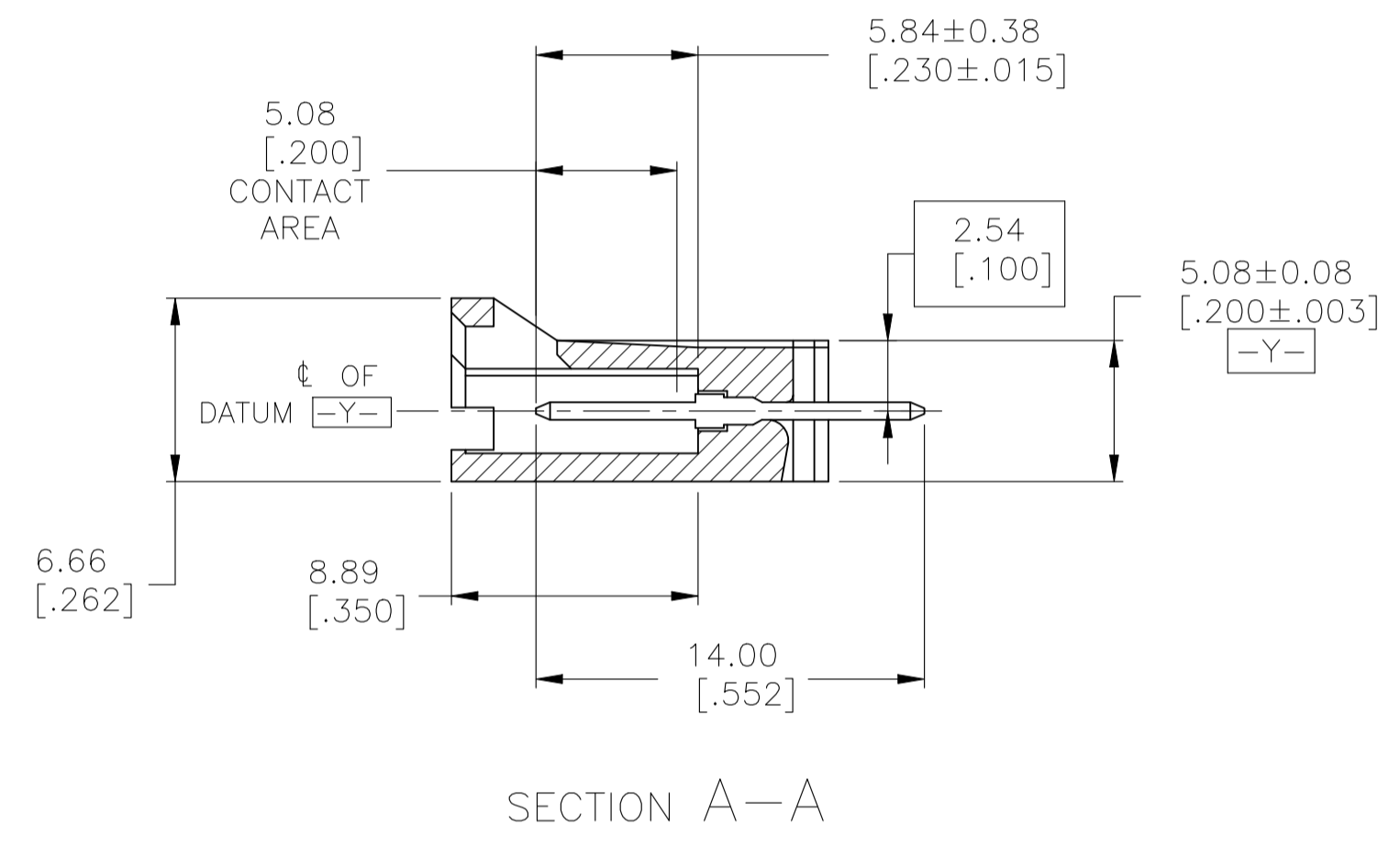
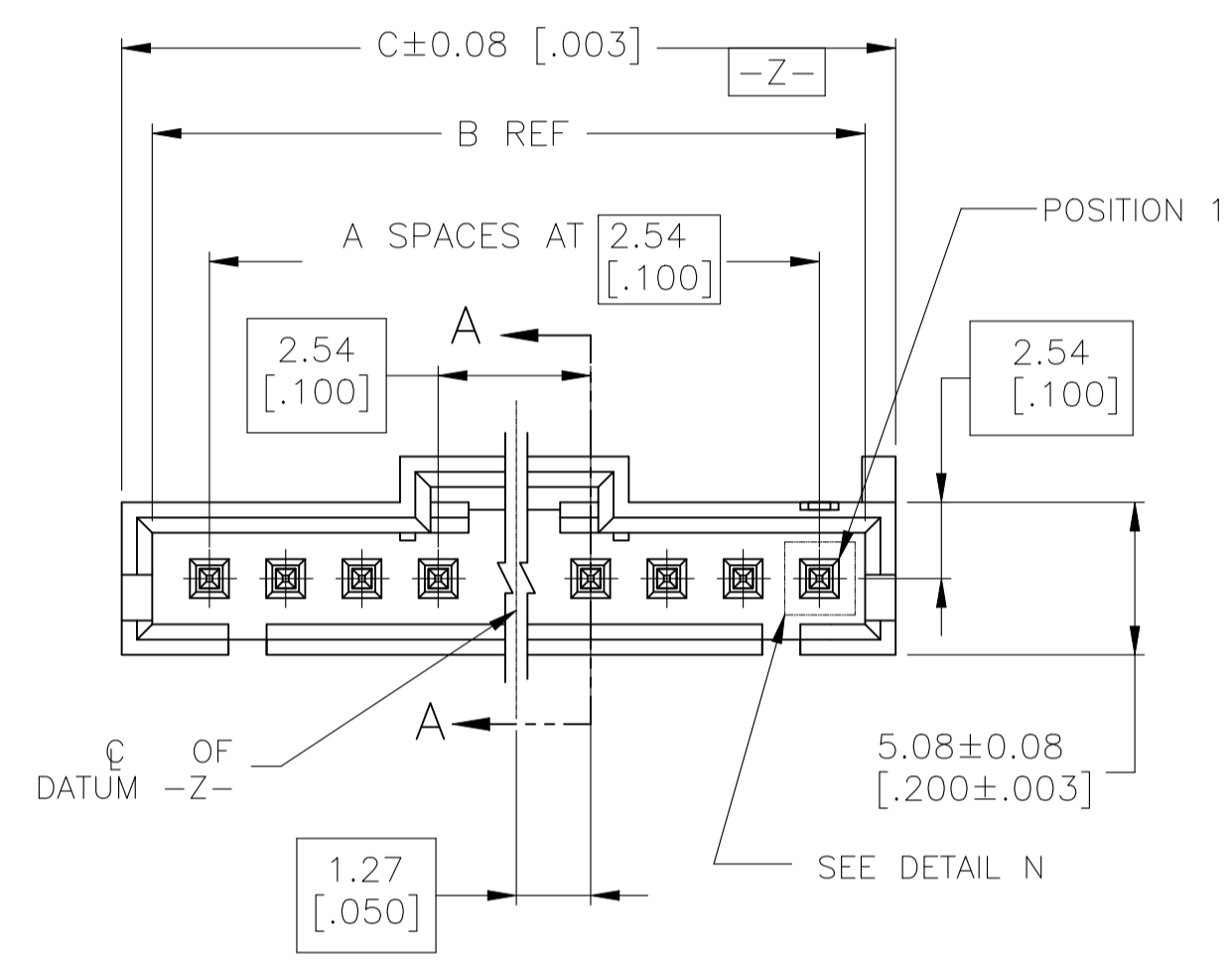
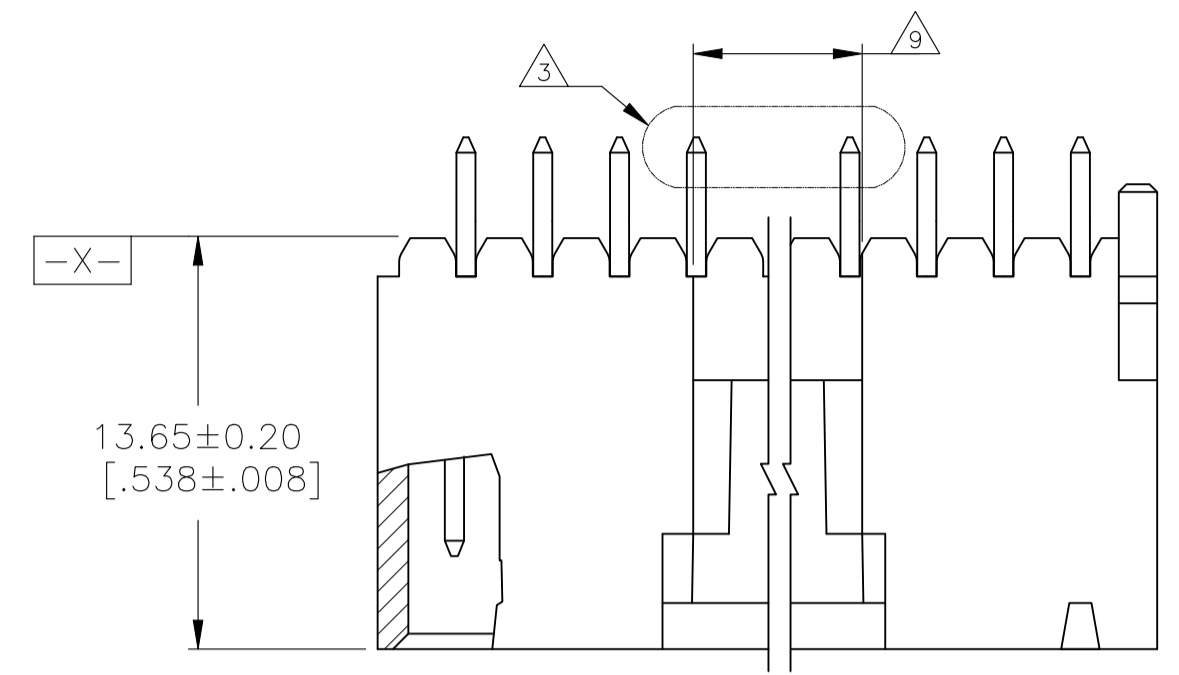
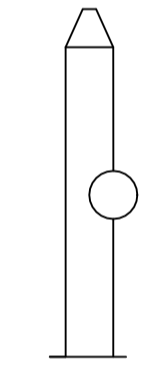


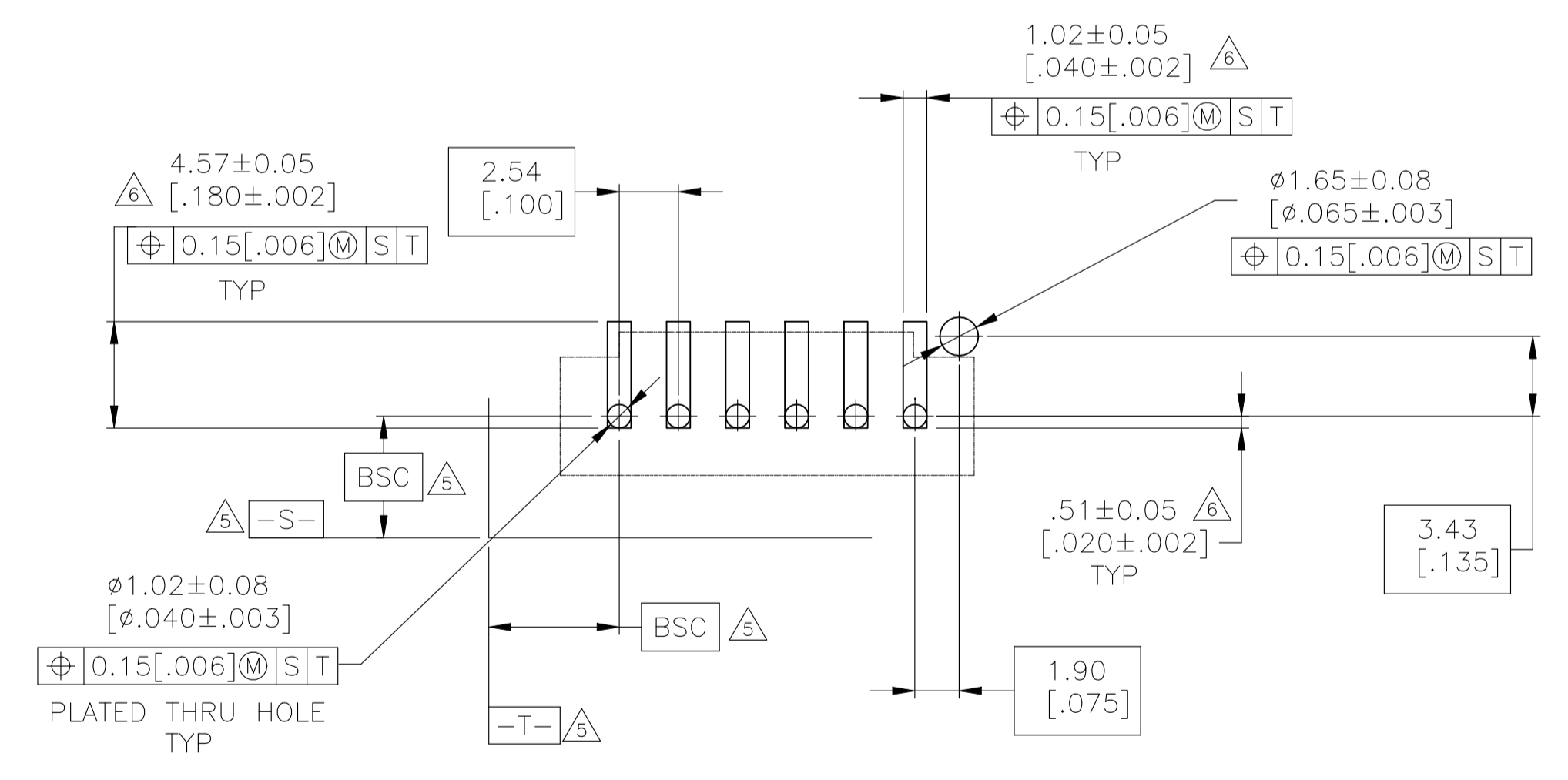
REVISIONS					
REV	DATE	DESCRIPTION	BY	CHK	APPV
G1	01SEP2023	REVISED PER ECN-23-228917	RK	MF	



DETAIL N
SCALE 10:1



DETAIL Z
POST DETAIL TYP
2 POST MINIMUM
SCALE 10:1



RECOMMENDED PC BOARD MOUNTING DIMENSIONS
RECOMMENDED STENCIL THICKNESS = 0.25 [0.010]

- 1 HOUSING: LCP, COLOR-BLACK.
POST: BRASS
- 2 FINISH: 0.00076 [0.000030] MIN GOLD ON THE CONTACT AREA, 0.00254 [0.000100] MIN MATTE TIN-LEAD ON REMAINDER OF CONTACT, ALL OVER 0.00127 [0.000050] NICKEL.
- 3 SELECT POST TAILS FORMED TO PROVIDE CONNECTOR HOLD DOWN UNTIL SOLDERED, CONFIGURATION ACCEPTS 0.69-2.03 [0.027-.080] THICK PRINTED CIRCUIT BOARD.(SEE DETAIL Z)
- 4 PARTS ARE PACKAGED IN GANG TUBES.
- 5 DATUMS AND BASIC DIMENSIONS ESTABLISHED BY CUSTOMER.
- 6 DIMENSIONS NOTED ARE FOR SOLDER STENCIL LAYOUT FOR USE WITH 1.58 ± 0.20 [0.062 ± 0.008] THICK PRINTED CIRCUIT BOARDS.
- 7 PRELIMINARY PART-NOT RELEASED FOR PRODUCTION.
- 8 FINISH: 0.00076 [0.000030] MIN GOLD ON THE CONTACT AREA, 0.00254 [0.000100] MIN MATTE TIN ON REMAINDER OF CONTACT, ALL OVER 0.00127 [0.000050] NICKEL.
- 9 0.25 [0.010] RECESS PERMISSIBLE IN THIS AREA FOR MOLD SHUT OFF

8	27.81 [1.095]	25.91 [1.020]	9	10	5-147245-9
8	22.73 [0.895]	20.83 [0.820]	7	8	5-147245-7
8	7.49 [0.295]	5.59 [0.220]	1	2	5-147245-1
7	27.81 [1.095]	25.91 [1.020]	9	10	147245-9
7	22.73 [0.895]	20.83 [0.820]	7	8	147245-7
2	7.49 [0.295]	5.59 [0.220]	1	2	147245-1
PLATING	C	B	A	NO. OF POSN	PART NO.

THIS DRAWING IS A CONTROLLED DOCUMENT.

DIMENSIONS: mm [INCHES]	TOLERANCES UNLESS OTHERWISE SPECIFIED:	DIN 9138 HAYMAKER 01APR99	TE Connectivity
0. PLC ± -	1. PLC ± -	CHK J. GESFORD 02APR99	NAME J. GESFORD
2. PLC ± -	3. PLC ± 0.13 [0.005]	APVD J. GESFORD 02APR99	PRODUCT SPEC
4. PLC ± -	ANGLES ± -	APPLICATION SPEC	SIZE CAGE CODE DRAWING NO. RESTRICTED TO
MATERIAL	FINISH SEE TABLE	WEIGHT	A1 00779 C=147245
		CUSTOMER DRAWING	SCALE 4:1 SHEET 1 OF 1 REV G1