

THIS DRAWING IS UNPUBLISHED. RELEASED FOR PUBLICATION  
 (C) COPYRIGHT 19 BY AMP INCORPORATED. ALL RIGHTS RESERVED.

LOC	DIST	REVISIONS			
P	LTR	DESCRIPTION	DATE	DWN	APVD
DF	XO	0	RELEASED	10-01	CT RG

COMPONENT	MATERIAL	FINISH
HOUSING CLAMP NUT COUPLING NUT	STAINLESS STEEL PER ASTM-A-484 OR ASTM-A-582 TYPE 303	PASSIVATED PER QQ-P-35
DIELECTRIC	PTFE FLUOROCARBON PER ASTM-D-1457	-
CENTER CONTACT	BERYLLIUM COPPER PER ASTM-B-196 OR ASTM-B-197 ALLOY C17300, CONDITION H	GOLD PLATED PER ASTM-B-488
INNER SLEEVE	BRASS PER ASTM-B-16 1/2 HARD	GOLD PLATED PER ASTM-B-488
RETAINING RING	BERYLLIUM COPPER PER ASTM-B-196 OR ASTM-B-197 ALLOY C17300, CONDITION H	NICKEL PLATED PER QQ-N-290
"O"-RING GASKET	SILICONE RUBBER PER ZZ-R-765	-
SHRINK TUBING	HEAT SHRINKABLE POLYOLEFIN COMPOUND PER MIL-I-23053/4	-
FERRULE	COPPER OR BRASS ALLOY ROCKWELL F65 MAX	GOLD PLATED PER ASTM-B-488

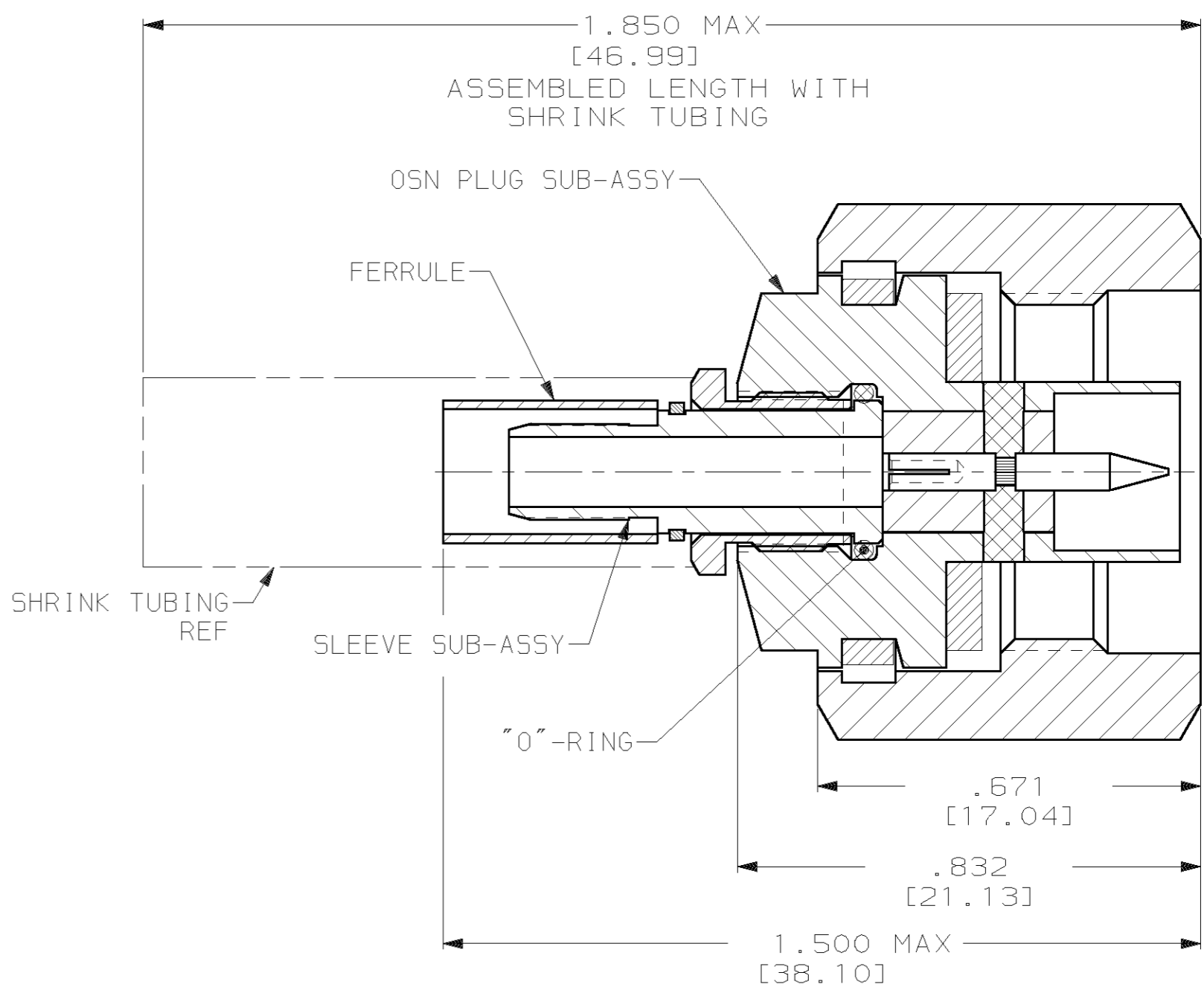
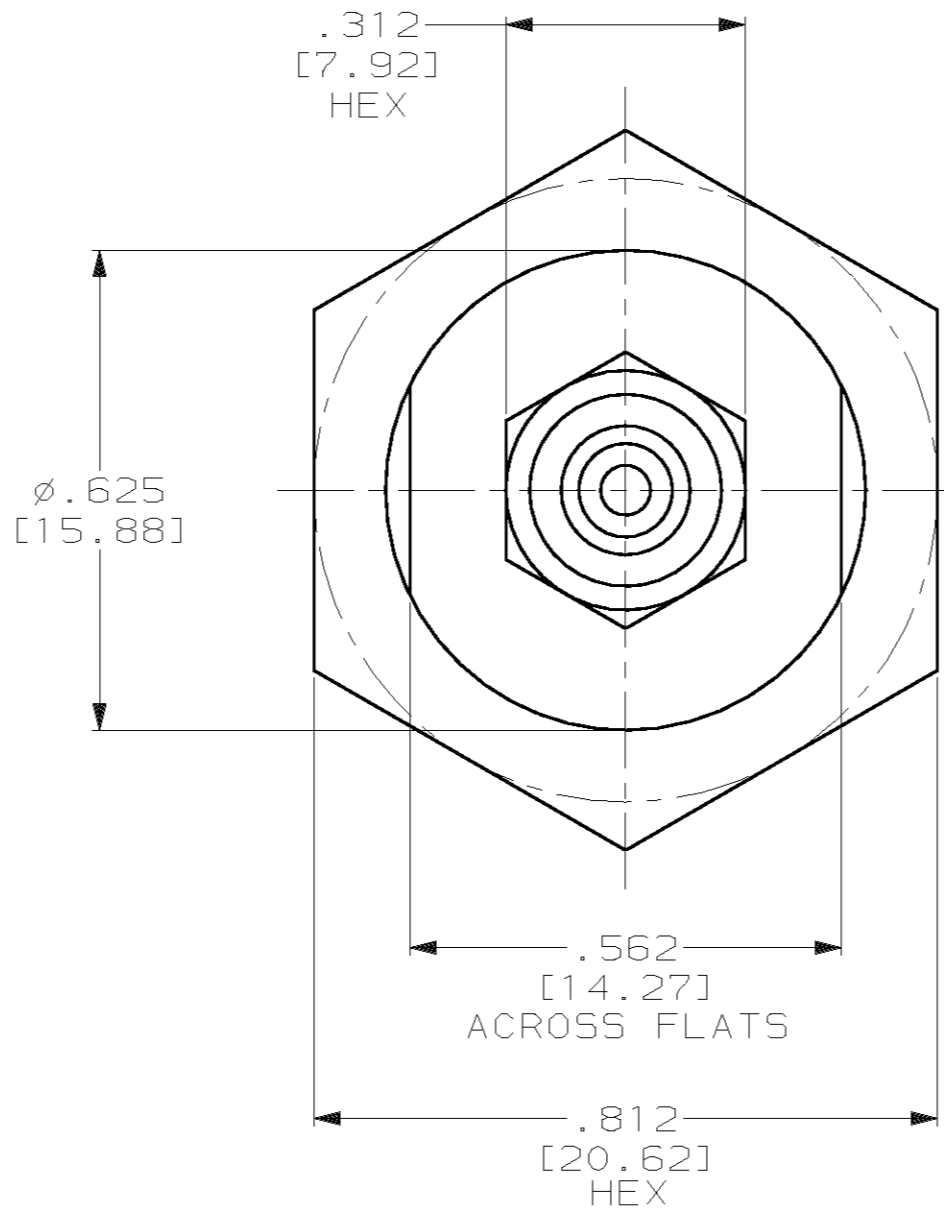
**ENVIRONMENTAL**  
 TEMPERATURE RATING: -65°C TO +125°C  
 VIBRATION: MIL-STD-202, METHOD 204, CONDITION B  
 SHOCK: MIL-STD-202, METHOD 213, CONDITION 1  
 MOISTURE RESISTANCE: MIL-STD-202, METHOD 106  
 CORROSION: MIL-STD-202, METHOD 101, CONDITION B. 5% SALT SPRAY  
 THERMAL SHOCK: MIL-STD-202, METHOD 107, CONDITION B EXCEPT HIGH TEMP 115°C

**MECHANICAL**  
 INTERFACE DIMENSIONS: MIL-STD-348A FIG. 304.2  
 RECOMMENDED MATING TORQUE: N/A  
 FORCE TO ENGAGE & DISENGAGE (IN-LBS MAX:): 6.0  
 WEIGHT (GRAMS): 15  
 MATING CHARACTERISTICS: INSERTION (MAX LBS): 2.0  
 WITHDRAWAL (MIN OZ): 2.0  
 CABLE RETENTION: AXIAL FORCE (LBS): 45 MIN  
 TORQUE (IN-OZ): N/A  
 CENTER CONTACT CAPTIVATION: AXIAL (LBS): 6.0  
 RADIAL (IN-OZ): 4.0

**ELECTRICAL**  
 NORMAL IMPEDANCE (OHMS): 50  
 FREQUENCY RANGE (GHz): DC TO 18  
 VOLT RATING @ SEA LEVEL (VRMS MAX): 250  
 VSWR: 1.07+.007F (GHz)  
 INSERTION LOSS: (dB MAX): .04 √F (GHz)  
 RF LEAKAGE (dB MIN): -[90-F (GHz)]  
 CORONA 70,000 FT (VRMS MIN): 190  
 DIELECTRIC WITHSTANDING VOLTAGE (VRMS MIN) AT SEA LEVEL: 750  
 I.R. (MEGOHMS MIN): 5000  
 RF HIGH POTENTIAL AT SEA LEVEL (VRMS MIN @ 5 MHz): 500  
 CONTACT RESISTANCE (MILLIOHMS MAX):  
 CENTER CONTACT: 1.5  
 OUTER CONTACT: 2.0  
 CABLE TO HOUSING: 0.5



SHRINK TUBING



1484438-1  
 PART NO.

DESIGNED TO USE WITH SF-142 CABLE CABLE ENTRY DIAMETER MIN  
 FERRULE: .216  
 SLEEVE: .121  
 CONTACT: .038

THIS DRAWING IS A CONTROLLED DOCUMENT.		DWN	C.C. THOMAS	10-19-01	<b>tyco</b> TYCO Electronics Corporation Harrisburg, PA 17105-3608
DIMENSIONS: INCHES [mm]		CHK	R. GROSS	10-19-01	
TOLERANCES UNLESS OTHERWISE SPECIFIED:		APVD	R. GROSS	10-19-01	NAME OSN PLUG TO SF-142 CABLE SOLDER ATTCHMENT
0 PLC ± 1 PLC ± 2 PLC ± 3 PLC ±.005 [0.13] 4 PLC ± ANGLES ±		PRODUCT SPEC	-	-	
MATERIAL SEE TABLE		FINISH	SEE TABLE	SEE TABLE	USE ASSEMBLY PROCEDURE: A.P. 560
CUSTOMER DRAWING		SCALE	4:1	SHEET	1 OF 1
REF: 3031-5005-29		REV	0	RESTRICTED TO	