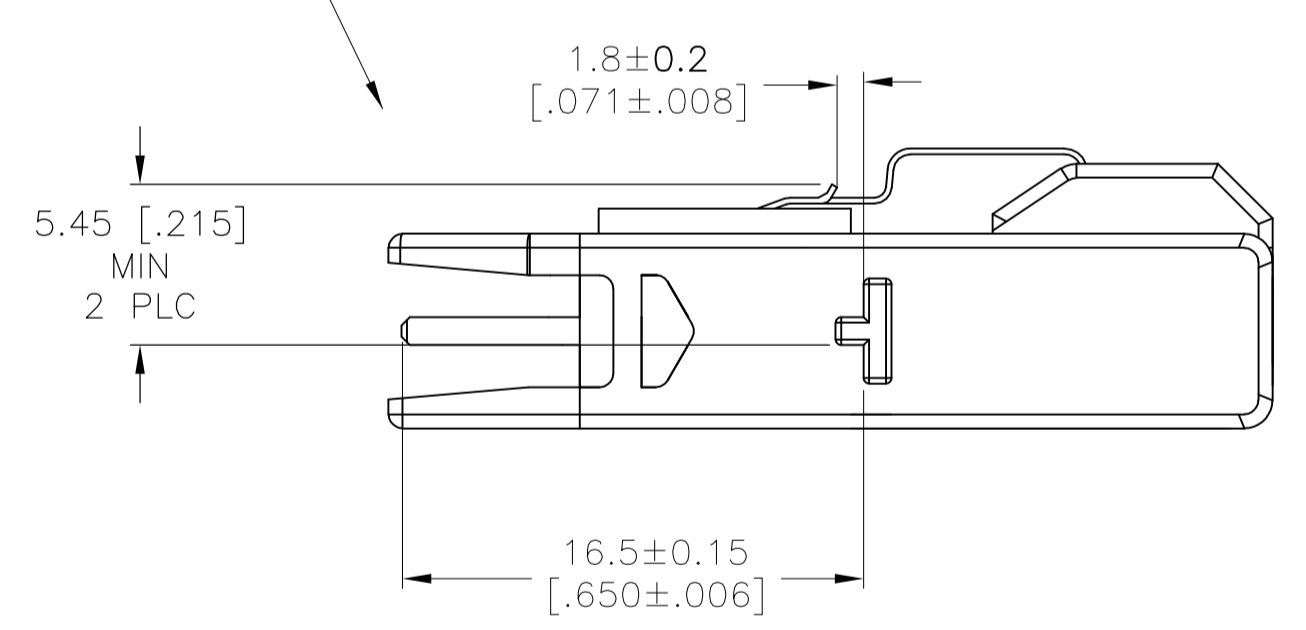


1559061, -3, -4, -5
 (SEE SHEET 2 FOR -2)
 (SEE SHEET 3 FOR -1)



1 LABEL INFORMATION:

XXX-XXXX-XX REV []	← CUSTOMER P/N & REV
TYCO ELECTRONICS	← DATE CODE
YYWW	← COUNTRY OF ORIGIN
MADE IN _____	

- 2. PRODUCT AND PROCESSING MUST MEET REQUIREMENTS OF TYCO ELECTRONICS STANDARD TEC-138-702.
- 3 MOLD TOOL TR02537 (DGN).
- 4 MOLD TOOL TR02638 (DGN).
- 5. CABLE ASSEMBLY TO BE TESTED FOR OPENS AND SHORTS. HI POT @ 300 VDC.
- 6 7-1200608-8 MAY BE USED AS AN ALTERNATE FOR 2-1537065-1.
- 7 603323-1 MAY BE USED AS AN ALTERNATE FOR 9-1487215-2.
- 8 1758122-1 MAY BE USED AS AN ALTERNATE FOR 1653680-1.

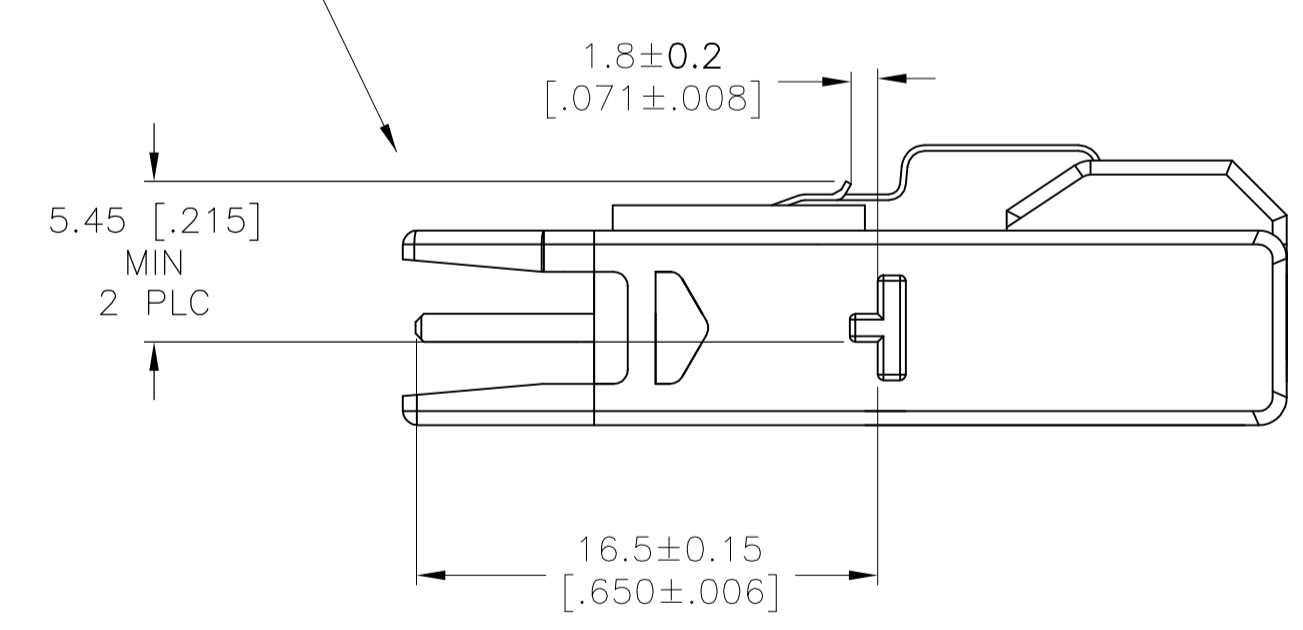
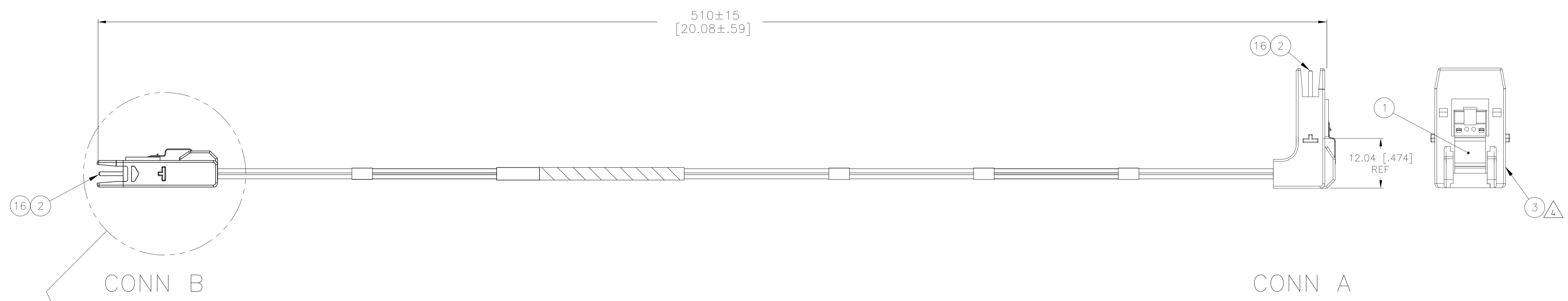
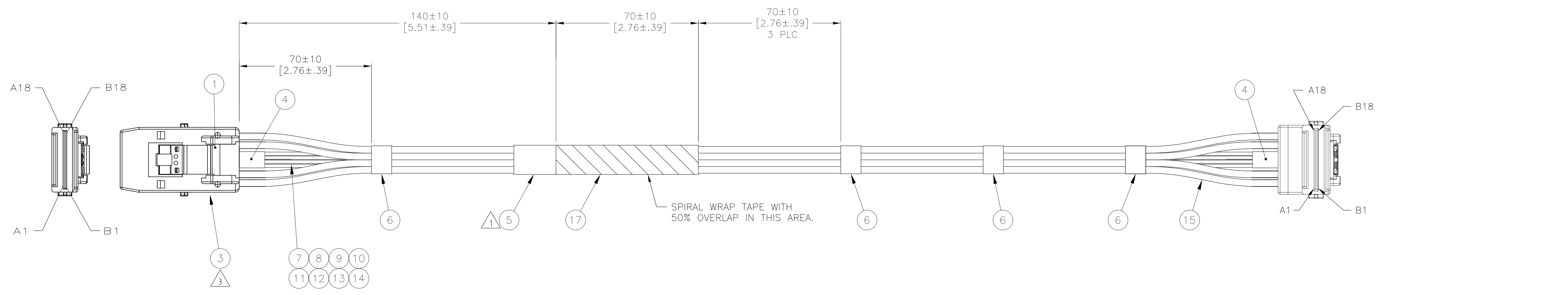
50	530-3904-04	70 [2.76]	460 [18.11]	1559061-5
01	530-3903-01	70 [2.76]	320 [12.60]	1559061-4
50	530-3862-04	70 [2.76]	390 [15.35]	1559061-3
50	530-3864-05	-	510 [20.08]	1559061-2
50	530-3855-05	-	560 [22.05]	1559061-1
CUSTOMER REV	CUSTOMER PART NO.	X	L	PART NO

.6	.6	.6	.6	.6	FT	TAPE	17
.003	.003	.003	.003	.003	LB	SOLDER	16
12.08	8.66	10.3	13.4	14.72	FT	SAS Cable,30AWG*2C+AD COLOR:WHITE	15
1.51	1.08	1.28	1.67	1.84	FT	WIRE, UL1061, 30AWG, COLOR: VIOLET	14
1.51	1.08	1.28	1.67	1.84	FT	WIRE, UL1061, 30AWG, COLOR: BLACK	13
1.51	1.08	1.28	1.67	1.84	FT	WIRE, UL1061, 30AWG, COLOR: WHITE	12
1.51	1.08	1.28	1.67	1.84	FT	WIRE, UL1061, 30AWG, COLOR: BLUE	11
1.51	1.08	1.28	1.67	1.84	FT	WIRE, UL1061, 30AWG, COLOR: GREEN	10
1.51	1.08	1.28	1.67	1.84	FT	WIRE, UL1061, 30AWG, COLOR: YELLOW	9
1.51	1.08	1.28	1.67	1.84	FT	WIRE, UL1061, 30AWG, COLOR: ORANGE	8
1.51	1.08	1.28	1.67	1.84	FT	WIRE, UL1061, 30AWG, COLOR: RED	7
3	1	2	4	3	PC	TAPE TIE	6
1	1	1	1	1	PC	LABEL	5
.042	.042	.042	.042	.042	PC	TUBING,HEAT SHRINK	4
.015	.015	.015	.015	.015	LB	MOLDING COMPOUND	3
2	2	2	2	2	PC	PCB,36 POSN,MINI-SAS	2
2	2	2	2	2	PC	CLIP,PLUG,MINI-SAS	1
-5	-4	-3	-2	-1	U/M	DESCRIPTION	ITEM NO

THIS DRAWING IS A CONTROLLED DOCUMENT.

DIMENSIONS: mm [INCHES]	TOLERANCES UNLESS OTHERWISE SPECIFIED:	DRAWING NO	RESTRICTED TO
0 PLC ± -	1 PLC ± -	A1 00779	1559061
2 PLC ± -	3 PLC ± -	SCALE	SHEET 1 OF 4
4 PLC ± -	ANGLES ± -	CUSTOMER DRAWING	REV D

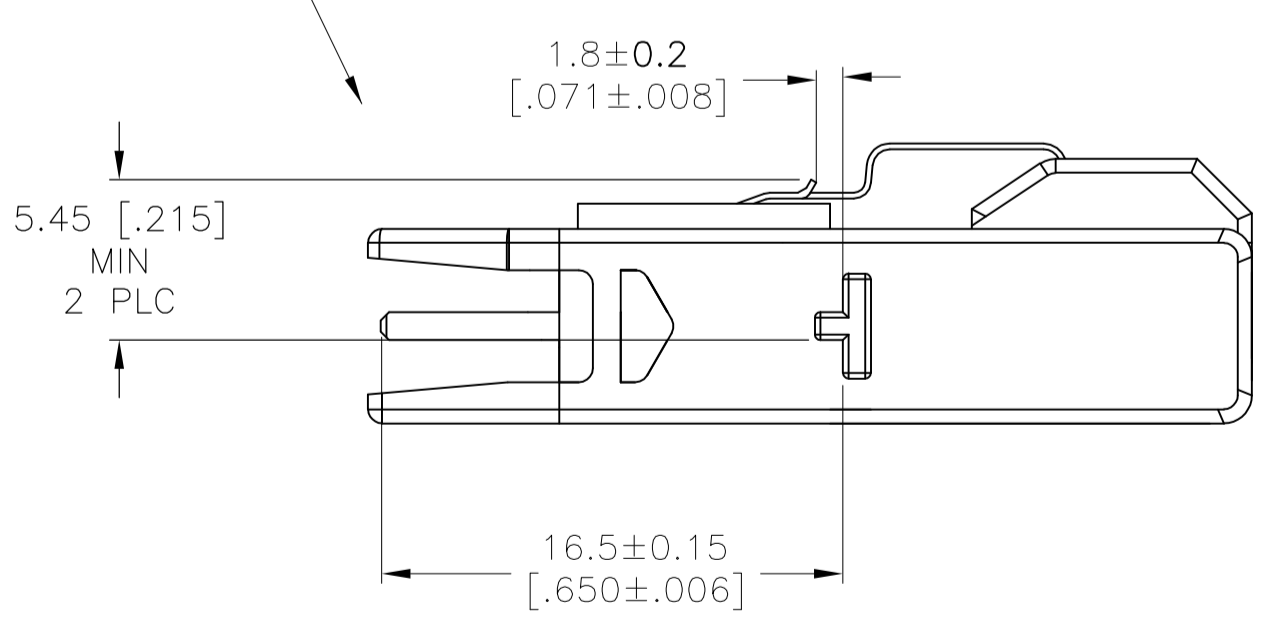
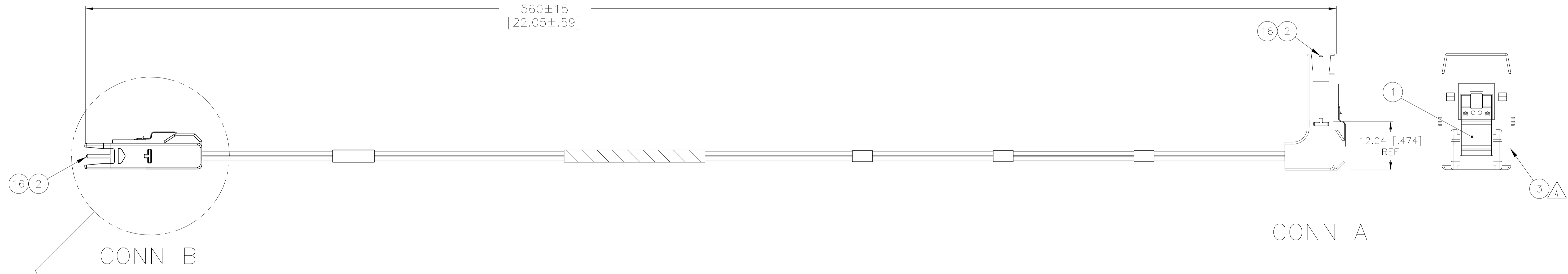
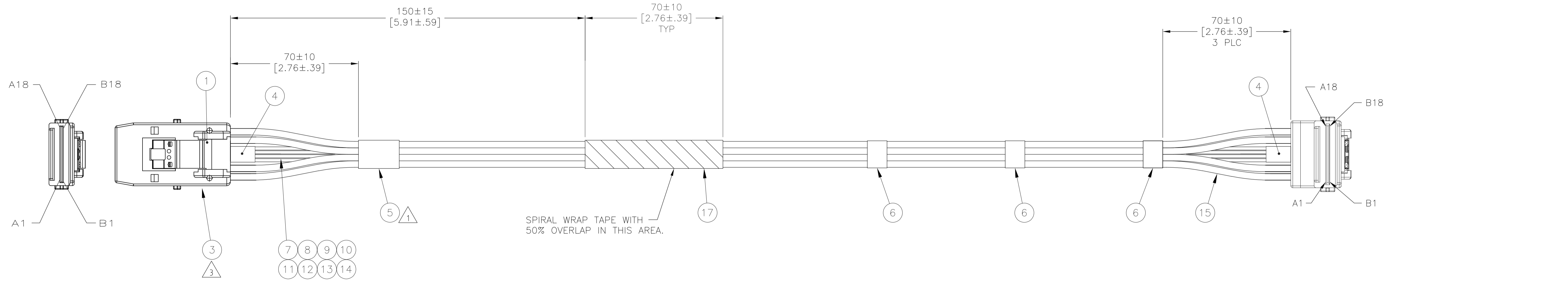
APPROVED: J. HACKMAN
 Tyco Electronics Corporation
 Harrisburg, PA 17105-3608



1559061-2

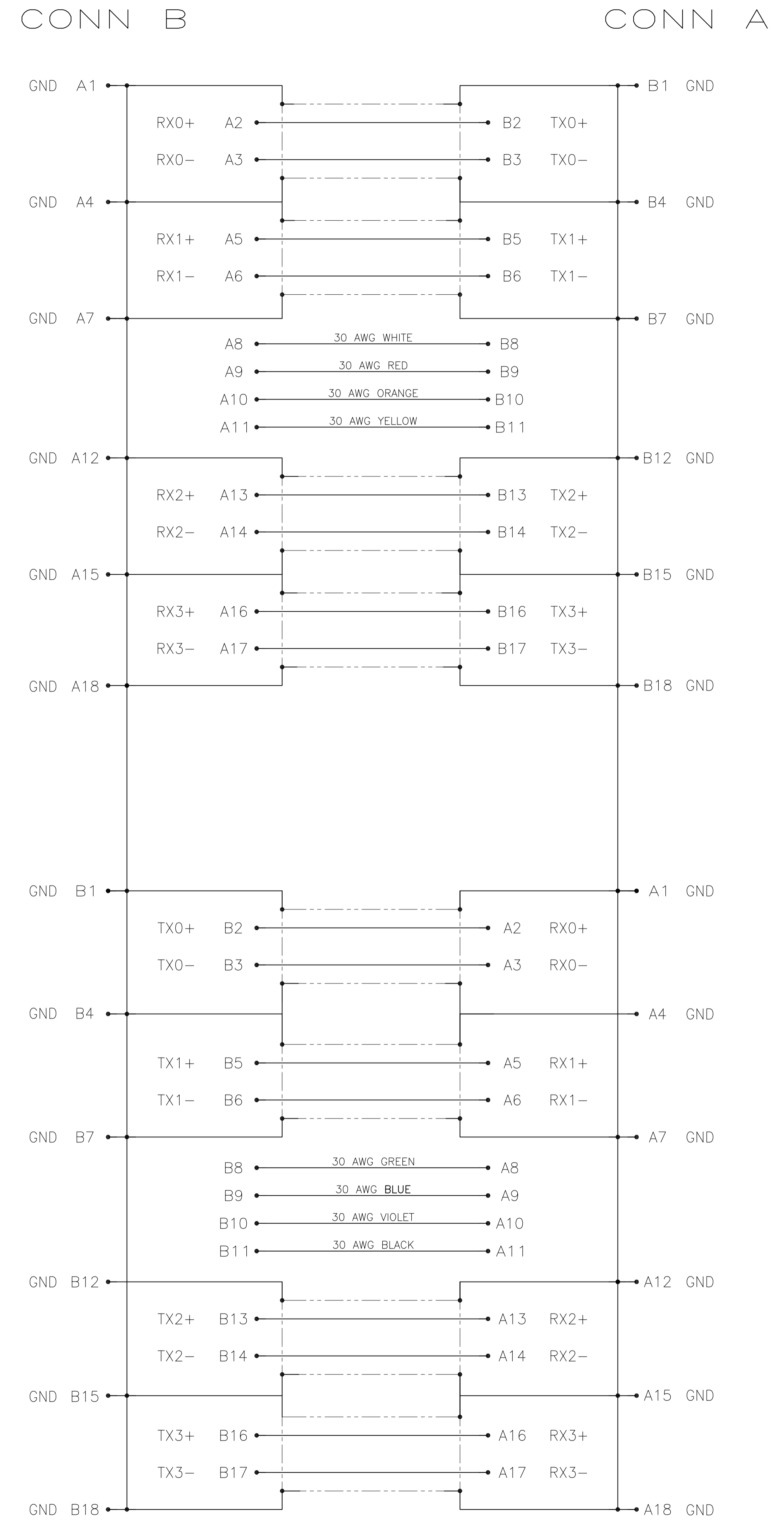
THIS DRAWING IS A CONTROLLED DOCUMENT.		DIN T.SMITH 17APR2009	Tyco Electronics Corporation Harrisburg, PA 17105-3608
DIMENSIONS: mm [INCHES]		CHK J.HACKMAN 17APR2009	
TOLERANCES UNLESS OTHERWISE SPECIFIED:		APVD J.HACKMAN 17APR2009	NAME CABLE ASSEMBLY MINI-SAS,INTERNAL,36 POSITION
0 PLC ± -	1 PLC ± -	PRODUCT SPEC	SIZE A1
2 PLC ± -	3 PLC ± -	APPLICATION SPEC	CAGE CODE 00779
4 PLC ± -	ANGLES ± -	WEIGHT	DRAWING NO 1559061
MATERIAL	FINISH	CUSTOMER DRAWING	RESTRICTED TO
		SCALE	SHEET 2 OF 4 REV D

LOC		DIST		REVISIONS			
P	LTR	DATE	DESCRIPTION	DATE	DNW	APVD	
GP	00	-	SEE SHEET 1	-	-	-	



1559061-1

THIS DRAWING IS A CONTROLLED DOCUMENT.		DNW T. SMITH 17APR2009	Tyco Electronics Corporation Harrisburg, PA 17105-3608
DIMENSIONS: mm [INCHES]		CHK J. HACKMAN 17APR2009	
TOLERANCES UNLESS OTHERWISE SPECIFIED:		APVD J. HACKMAN 17APR2009	NAME CABLE ASSEMBLY MINI-SAS, INTERNAL, 36 POSITION
0 PLC ± -	1 PLC ± -	2 PLC ± -	3 PLC ± -
4 PLC ± -	ANGLES ± -	APPLICATION SPEC	
MATERIAL	FINISH	WEIGHT	RESTRICTED TO
-	-	A1 00779	SCALE - SHEET 3 OF 4 REV D
CUSTOMER DRAWING		SIZE A1	DRAWING NO 1559061



THIS DRAWING IS A CONTROLLED DOCUMENT.		DIN T. SMITH 17APR2009	Tyco Electronics Corporation Harrisburg, PA 17105-3608
DIMENSIONS: mm [INCHES]		CHK J. HACKMAN 17APR2009	
0. PLC ± - 1. PLC ± - 2. PLC ± - 3. PLC ± - 4. PLC ± - ANGLES ± -		APVD J. HACKMAN 17APR2009	NAME CABLE ASSEMBLY MINI-SAS, INTERNAL, 36 POSITION
MATERIAL -		FINISH -	SIZE: A1 CAGE CODE: 00779 DRAWING NO: 1559061 WEIGHT: - RESTRICTED TO: -
AMP 3308-8 REV 23FEB95		CUSTOMER DRAWING	
W:\Engineering_Dept\Tyco\A1002\product_engineering_drawings\Sample Drawing\Sun_Micro\CD_1559061_D.dwg		SCALE: - SHEET 4 OF 4 REV D	