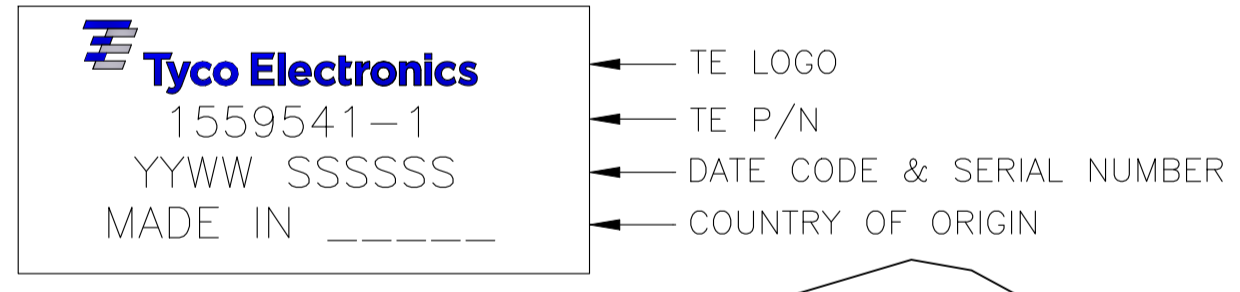


CABLE DETAIL

1 LABEL INFORMATION:



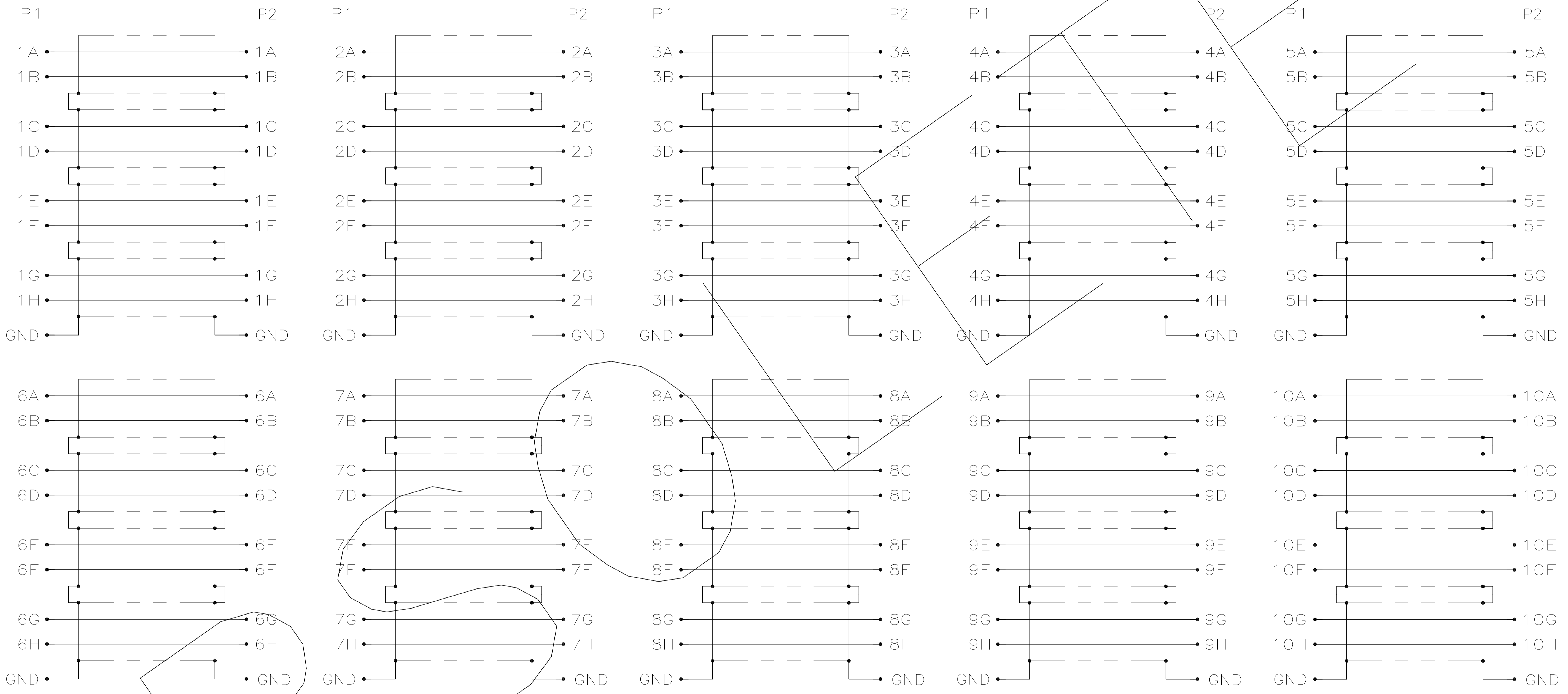
2. ASSEMBLY TESTED FOR OPENS AND SHORTS.  
 HI-POT @ 300 VDC, 50 MEGAOHMS FOR 100 MILLISECONDS.

3 ALL 40 PAIRS TO BE INDIVIDUALLY LABELED IN THIS AREA,  
 INFORMATION TO INCLUDE ROW AND COLUMN.  
 LABEL INFORMATION FOR 1A-1B TO READ "1A", 1C-1D TO READ "1C"  
 1E-1F TO READ "1E", 1G-1H TO READ "1G"

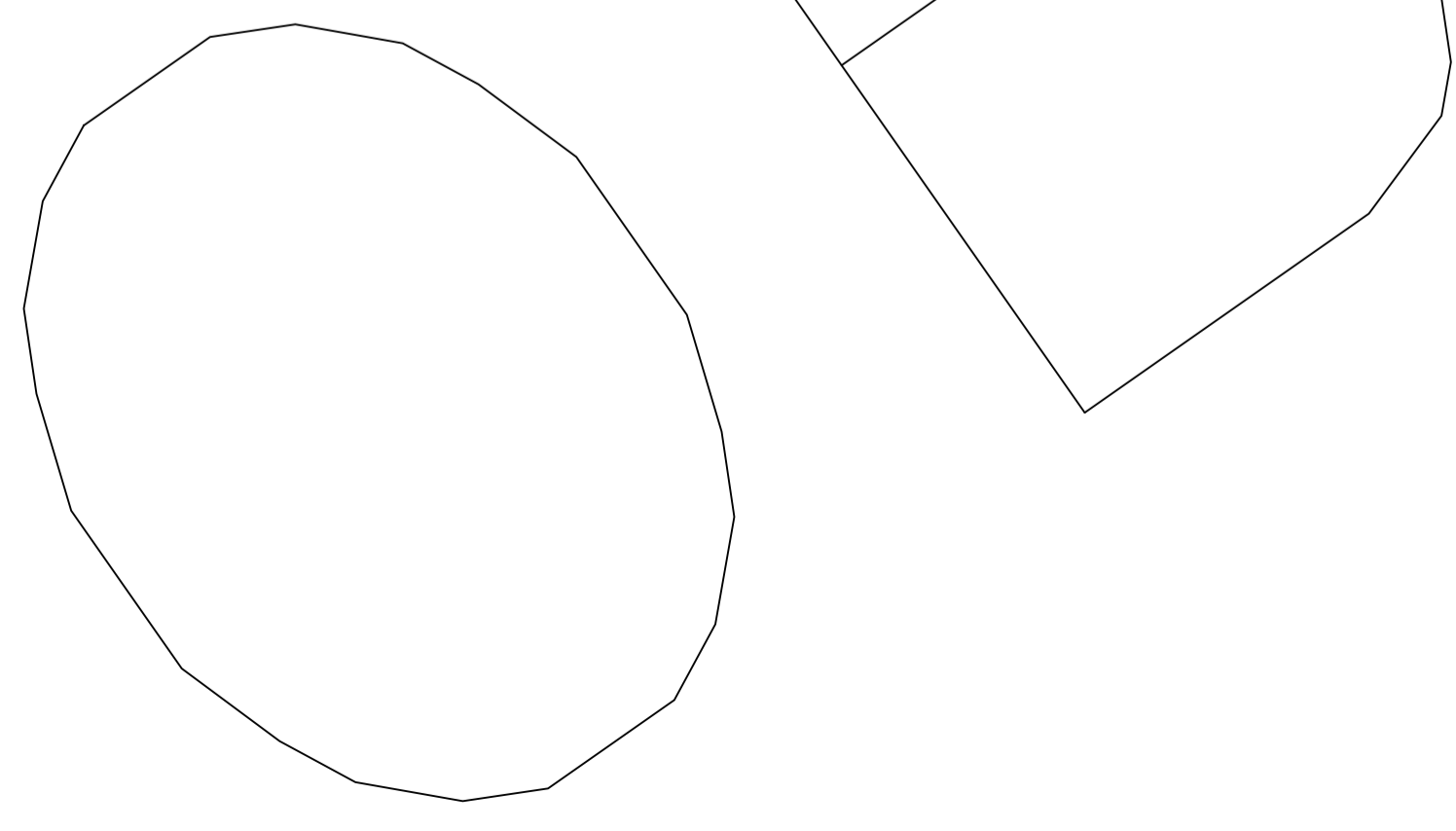
4. ROHS COMPLIANCE: PRODUCT AND PROCESSING MEET REQUIREMENTS OF  
 TYCO ELECTRONICS SPECIFICATION TEC-138-702.

1559541-1  
 PART NO

THIS DRAWING IS A CONTROLLED DOCUMENT.		DWN T. SMITH 14OCT2009	Tyco Electronics Corporation Harrisburg, PA 17105-3608
DIMENSIONS: mm		CHK C. ADAMS 14OCT2009	
TOLERANCES UNLESS OTHERWISE SPECIFIED:		APVD C. ADAMS 14OCT2009	NAME C. ADAMS
0 PLC ±	1 PLC ±	PRODUCT SPEC	CABLE ASSY, 4 PAIR X 10, HMZD
2 PLC ±	3 PLC ±	APPLICATION SPEC	
4 PLC ±	ANGLES ±	SIZE	CAGE CODE
MATERIAL	FINISH	WEIGHT	DRAWING NO
			A1 00779
CUSTOMER DRAWING		SCALE	RESTRICTED TO
		SHEET 1 OF 2	REV B



WIRING PATTERN



THIS DRAWING IS A CONTROLLED DOCUMENT.		DWN T. SMITH 14OCT2009	Tyco Electronics Corporation Harrisburg, PA 17105-3608	
DIMENSIONS: mm		CHK C. ADAMS 14OCT2009	Tyco Electronics	
TOLERANCES UNLESS OTHERWISE SPECIFIED: 0. PLC ± . 1. PLC ± . 2. PLC ± . 3. PLC ± . 4. PLC ± . ANGLES ± .		APVD C. ADAMS 14OCT2009	NAME CABLE ASSY, 4 PAIR X 10, HMZD	
MATERIAL		FINISH	APPLICATION SPEC	RESTRICTED TO
			SIZE A1	CAGE CODE 00779
			DRAWING NO 1559541	REV 2
			WEIGHT	SHEET 2 OF 2
			CUSTOMER DRAWING	SCALE