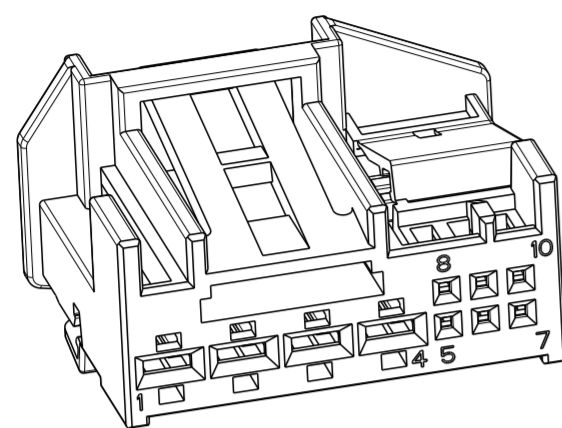
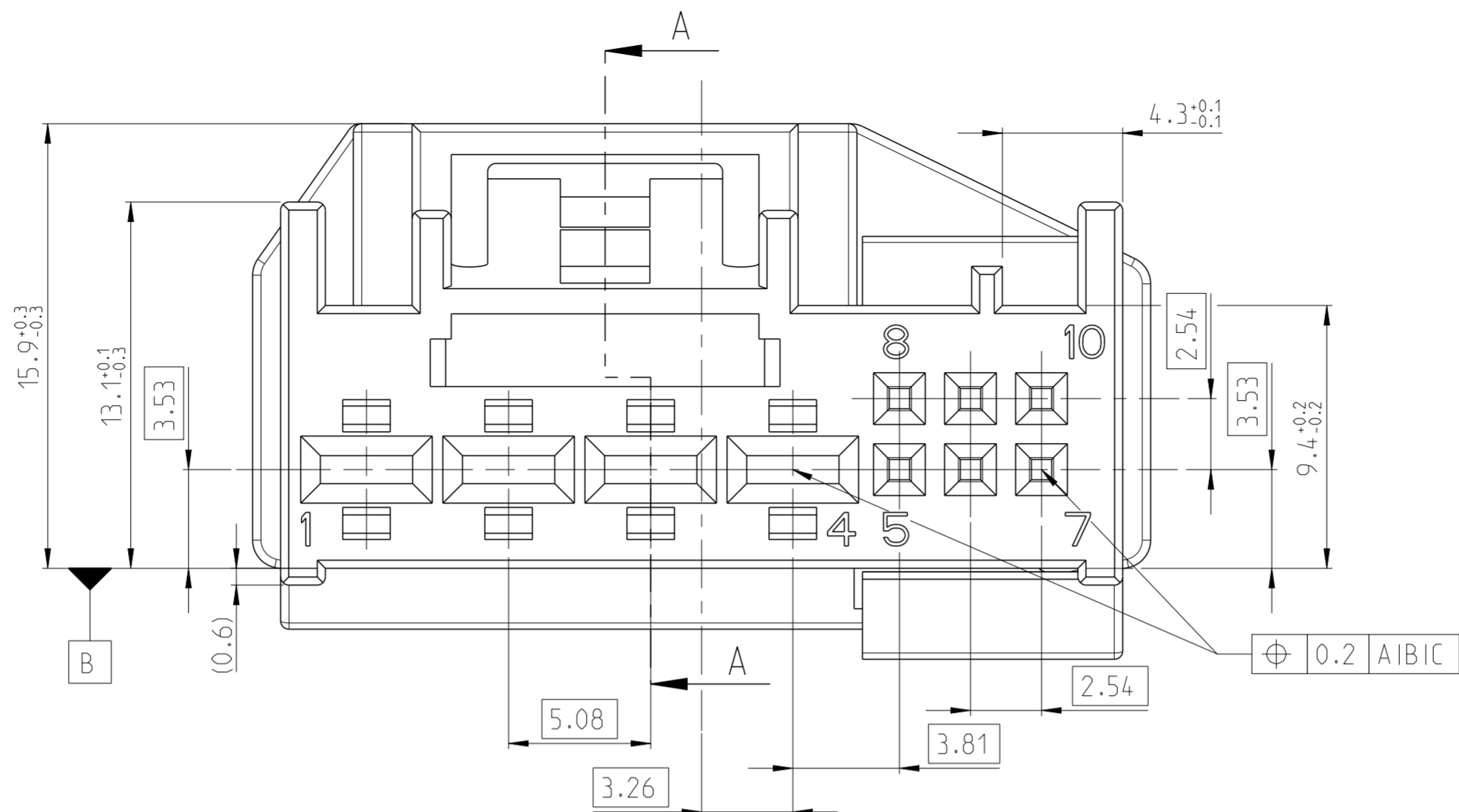


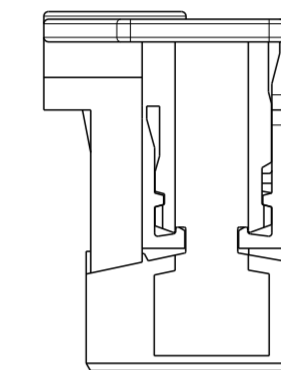
LOC	DIST	REVISIONS					
A1	-	P	LTR	DESCRIPTION	DATE	DWN	APVD
PROJEKT NR.: EGATN07302		A		NEW DRAWING	08NOV2012	MR	RBT
		B1		CODING-A RIB UPDATED	16JUN2014	MV	MDG



2:1

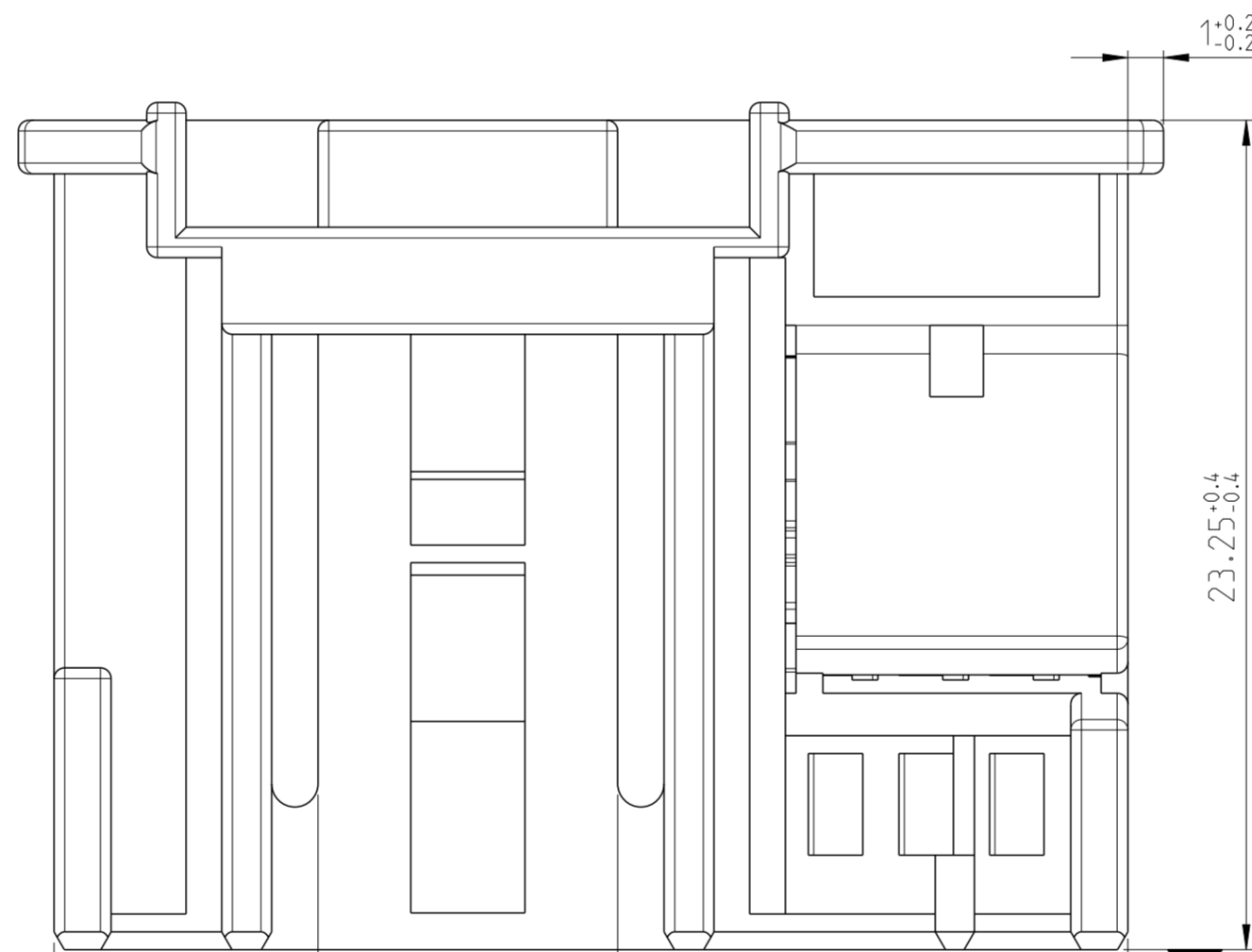
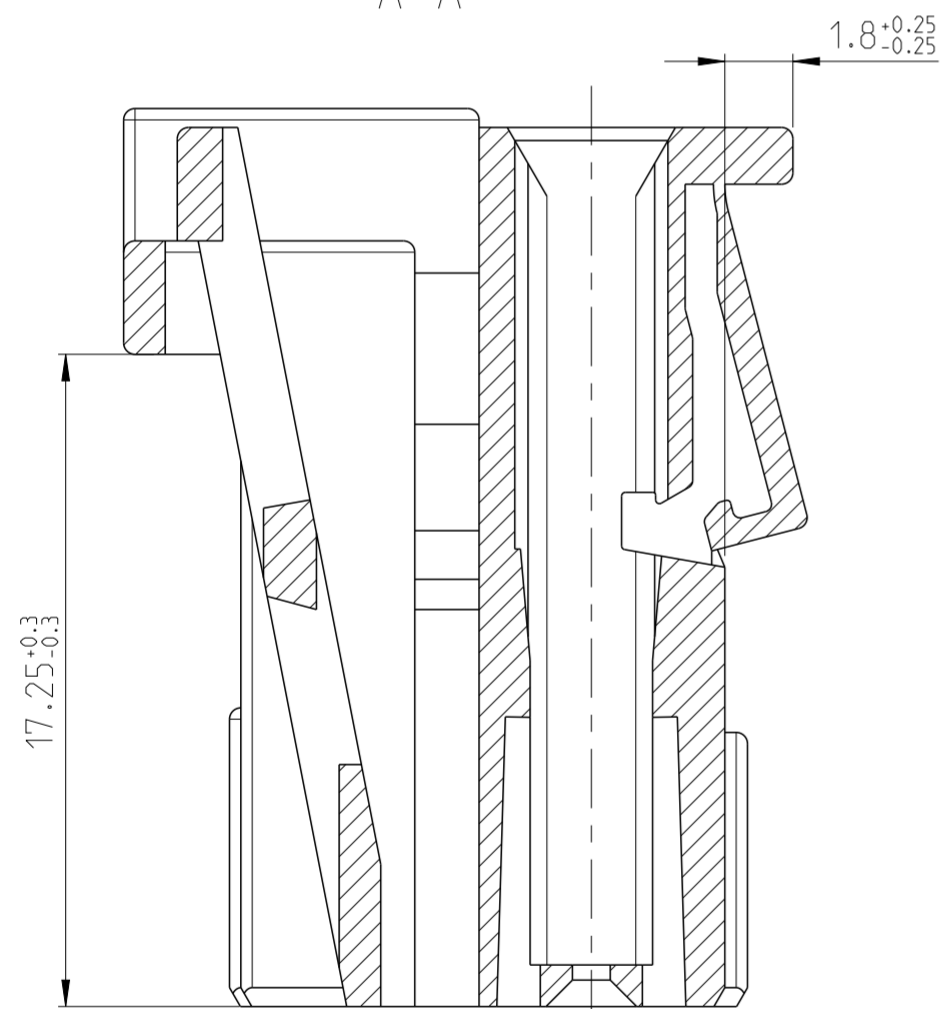


Deckel geschlossen
 COVER CLOSED



2:1

A-A



NOTES

- 1 SUITABLE CONTACTS:
 MQS: 928999, 1355717, 693715
 MCP 2.8k: 1241386, 1241388, 1241390
- 2 PACKAGING: LOOSE PIECE IN CARTON

Bemerkungen

- 1 Passende Kontakte:
 MQS: 928999, 1355717, 963715
 MCP 2.8k: 1241386, 1241388, 1241390
- 2 Verpackung: Schuettgut in karton

1-1563331-1	REV.	CODING Kodierung	MATERIAL	COLOUR Farbe	RAL	DESCRIPTION Benennung	ITEM NO.
B	A		PBT-GF10	BLACK / schwarz	9011	REC. HSG. / Buchsengehaeuse	1

TOLERANCES UNLESS OTHERWISE SPECIFIED ACC. TO DIN 16901-140 @ CENTRIC TO NOMINAL DIMENSION. EDITION 1982-11 SHALL APPLY. Freimass toleranzen nach DIN 16901-140 @. Es gilt die Ausgabe 1982-11.		DWN Madesh R 07NOV2012	
THIS DRAWING IS A CONTROLLED DOCUMENT. DIESES ZEICHNUNGSDOKUMENT WIRD DURCH AMP INCORPORATED KONTROLLIERT. ÄNDERUNGEN, DIE DEM TECHNISCHEN FORTSCHRITT DIENEN, SIND VORBEHALTEN. DEN JEWEILS LETZTGÜLTIGEN ÄNDERUNGSSTAND ERFAHREN SIE AUF ANFRAGE.		CHK Rudresh B 08NOV2012	
DIMENSIONS: MASSE INH EINHEITEN: (MM)	TOLERANCES UNLESS OTHERWISE SPECIFIED: ALLGEMEINE TOLERANZEN	APVD -	NAME
0 PLC ±	0 PLC ±	PRODUCT SPEC -	10POS, MIXED REC HSG, MQS / MCP 2.8K
1 PLC ±	1 PLC ±	APPLICATION SPEC -	10pol.. Buchsengehaeuse, MQS / MCP 2.8K
2 PLC ±	2 PLC ±	WEIGHT -	SIZE
3 PLC ±	3 PLC ±	Customer Drawing	A2
4 PLC ±	4 PLC ±	SCALE 5:1	CAGE CODE 100779
ANGLES/WINKEL FINISH/OBERFLÄCHE/FARBE	±2° SEE TABLE	SHEET 1	DRAWING NO. C-1563331
MATERIAL SEE TABLE	SEE TABLE	OF 1	RESTRICTED TO NUR FÜR
		REV B1	

