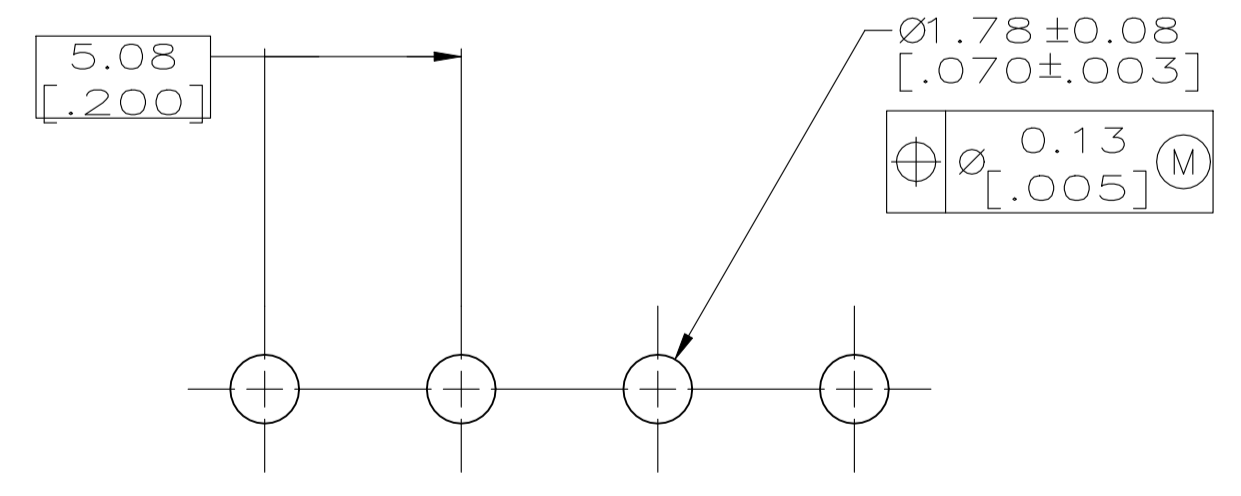
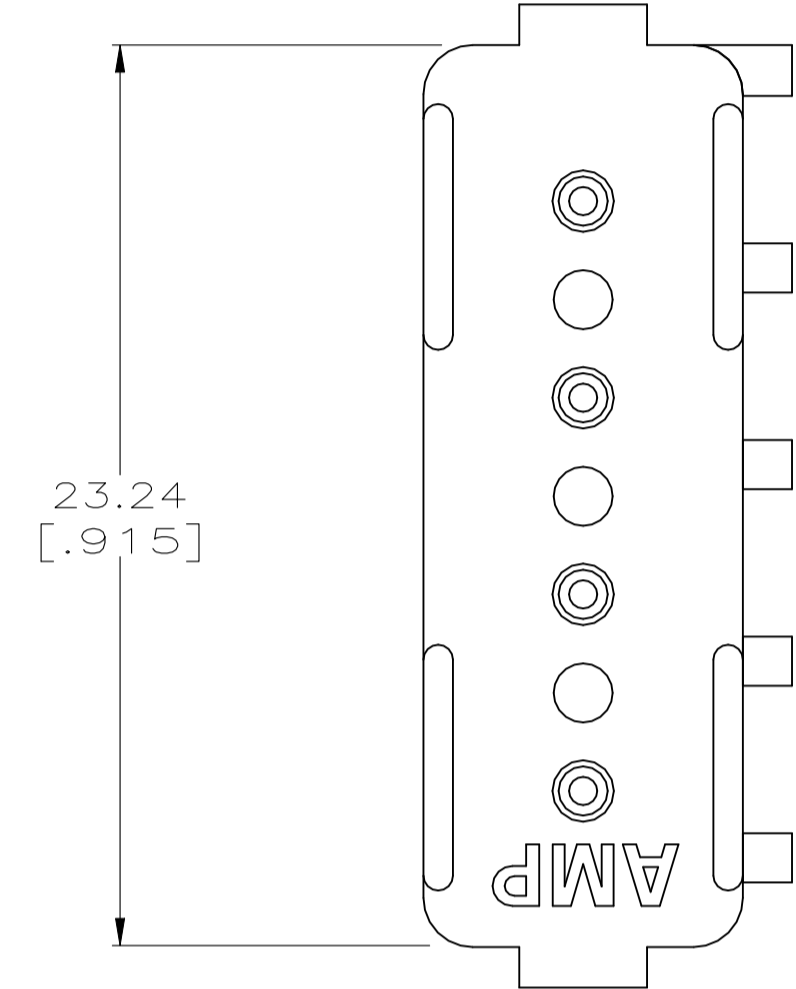
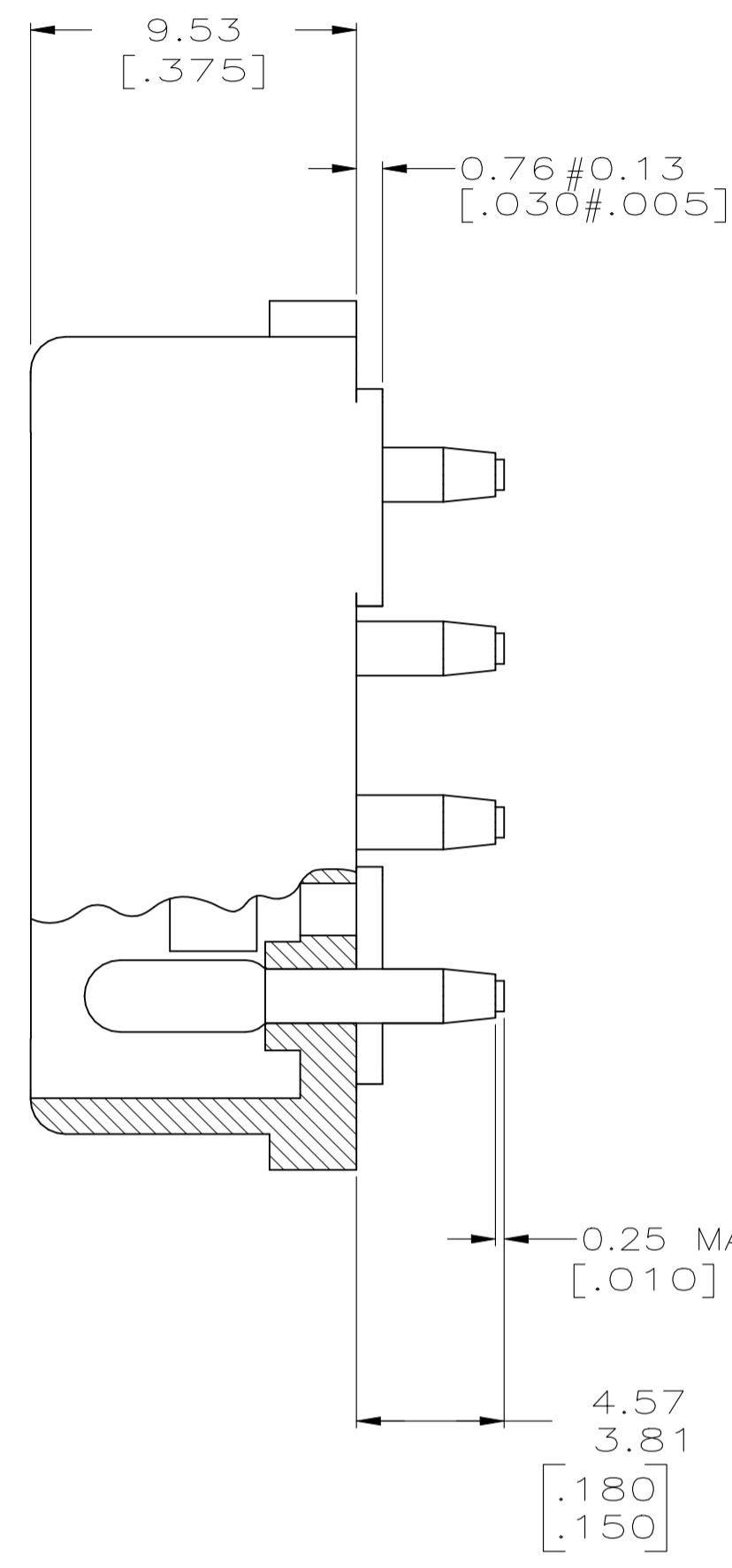
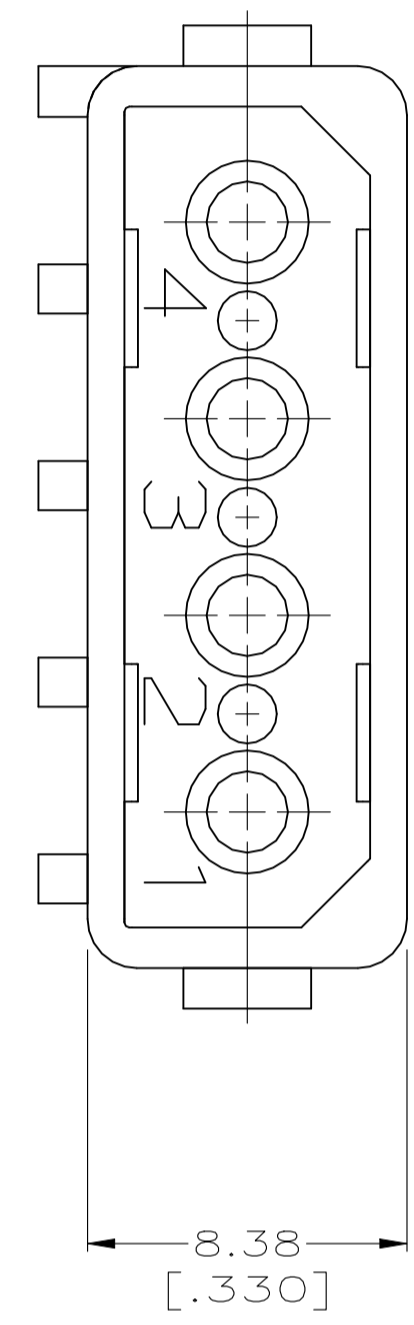
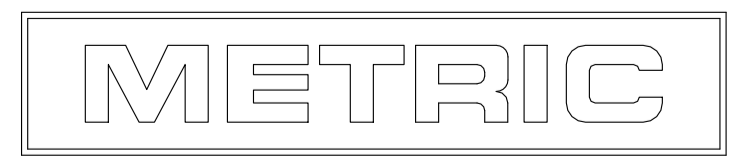


- 1 PARTS COMPLY WITH AMP SOLDERABILITY SPEC. 109-11-3.
- 3 MATERIAL: HOUSING - NYLON,UL94V-2,NATURAL  
PIN - COPPER ALLOY,BRIGHT TIN  
PLATED,0.0020 [.000080] MIN.THK.
- 4 DIMENSION SHOWN REPRESENT PRODUCT IN DRY CONDITION.  
ADDITIONAL 2% GROWTH DUE TO END USE LOCATION  
MOISTURE ABSORPTION MAY OCCUR AND SHOULD BE  
ACCOUNTED FOR.



RECOMMENDED MOUNTING HOLE PATTERN  
FOR 1.57 [.062] THICK P.C. BOARD



—	—	4	1586627-1
HEADER ASSY	PLUG	NO. OF POSITIONS	PART NUMBER
QTY PER TUBE		HEADER ASSEMBLY	

THIS DRAWING IS A CONTROLLED DOCUMENT.		DIN K WHITAKER 24JUNE2005		Tyco Electronics Corporation	
DIMENSIONS: mm [NCHES]		CHK D COLEY 24JUNE2005		Harrisburg, PA 17105-3608	
TOLERANCES UNLESS OTHERWISE SPECIFIED:		APP'D D COLEY 24JUNE2005		NAME	
0. PLC	± -	PRODUCT SPEC		HEADER ASSY, 4 CKT, COMMERCIAL MATE-N-LOK(TM)	
1. PLC	± -	APPLICATION SPEC		—	
2. PLC	± -	SIZE		CAGE CODE	
3. PLC	± 0.38 [.015]	WEIGHT		DRAWING NO	
4. PLC	± -	A1 00779		1586627	
ANGLES	± -	CUSTOMER DRAWING		RESTRICTED TO	
MATERIAL	FINISH	SCALE 5:1		SHEET 1 of 1	
3	3	REV A1			