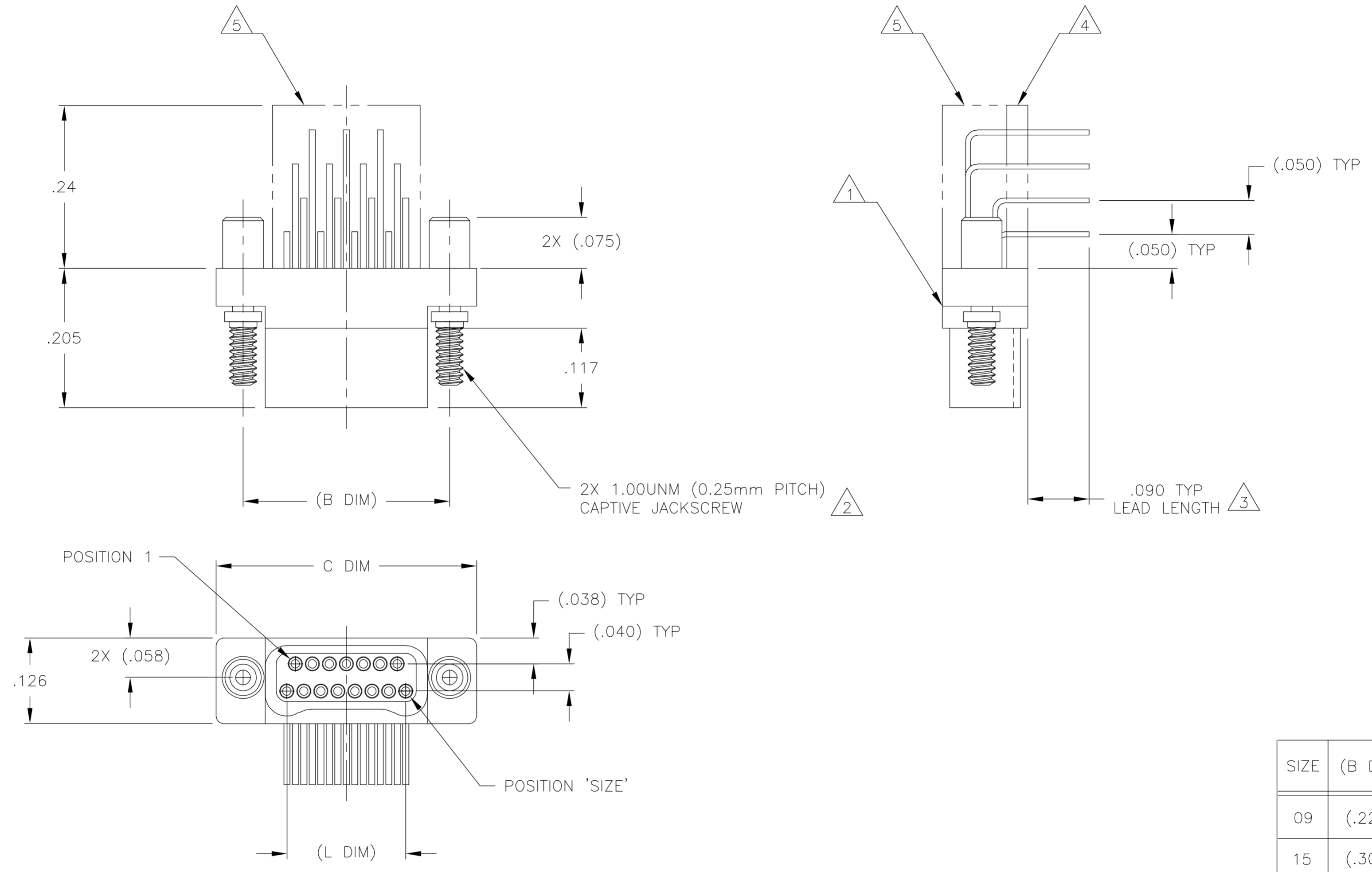


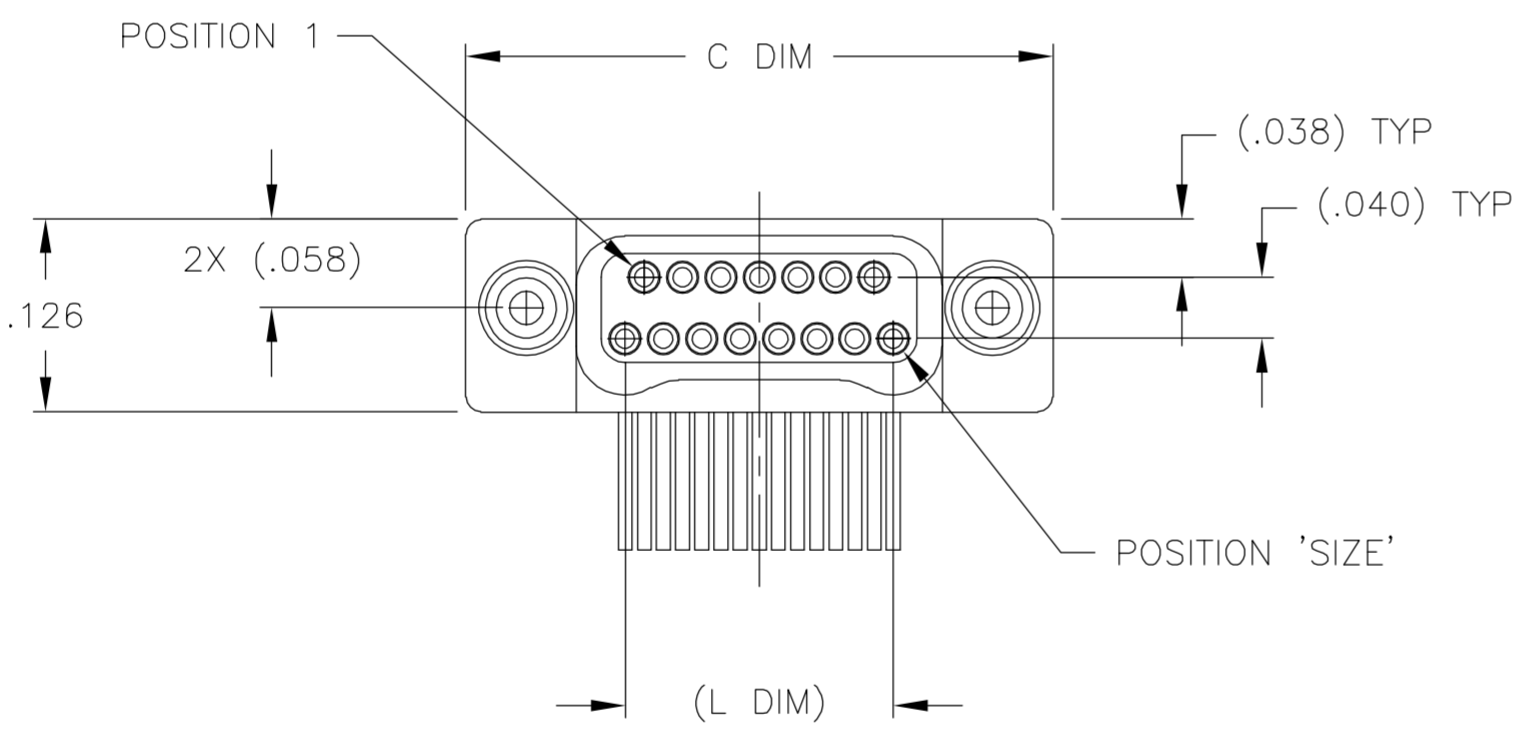
THIS DRAWING IS UNPUBLISHED. RELEASED FOR PUBLICATION  
 © COPYRIGHT BY TYCO ELECTRONICS CORPORATION. ALL RIGHTS RESERVED.

LOC		DIST		REVISIONS			
P	LTR	DESCRIPTION		DATE	DWN	APVD	
	A	INITIAL RELEASE		26 SEP 05	CAS	MKS	



2X 1.00UNM (0.25mm PITCH) CAPTIVE JACKSCREW

.090 TYP LEAD LENGTH



SIZE	(B DIM)	C DIM ±.0050	(L DIM)
09	(.229)	.3085	(.100)
15	(.304)	.3835	(.175)
25	(.429)	.5085	(.300)
37	(.579)	.6585	(.450)
51	(.754)	.8335	(.625)
65	(.929)	1.0085	(.800)

- 1 SHELL OPTIONS (TO BE SPECIFIED IN NANONICS PART NUMBER):  
 METAL: 6061-T6 ALUMINUM, ELECTROLESS NICKEL PLATED PER SAE-AMS-C-26074 (STANDARD) OR GOLD PLATED PER ASTM B488  
 303 STAINLESS STEEL, PASSIVATED PER SAE-AMS-2700  
 INSULATOR MATERIAL FOR ALL METAL SHELLS IS LIQUID CRYSTAL POLYMER (LCP) PER MIL-M-24519 OR PER ASTM D5138  
 PLASTIC: LIQUID CRYSTAL POLYMER (LCP) PER MIL-M-24519 OR PER ASTM D5138
- 2 STANDARD 1.00UNM CAPTIVE JACKSCREWS ARE SHOWN FOR REFERENCE ONLY AND MUST BE SPECIFIED IN THE NANONICS PART NUMBER WHEN REQUIRED. JACKSCREW MATERIAL IS 303 STAINLESS STEEL, PASSIVATED PER SAE-AMS-2700, AND DRY LUBED PER DOD-L-85645. RETAINING RING IS 17-4 STAINLESS STEEL, PASSIVATED PER SAE-AMS-2700. JACKSCREWS HAVE A .9mm HEX SOCKET HEAD. 1.20UNM JACKSCREWS ALSO AVAILABLE.
- 3 LEAD MATERIAL: HH BRASS, GOLD PLATED PER ASTM B488
- 4 INSULATOR BOARD MATERIAL: G10 OR EQUIVALENT
- 5 EPOXY ENCAPSULATION USING FREY CF-3003 EPOXY
- 6 NANONICS TERMINATION CODE: I6
- 7 THIS DRAWING PREVIOUSLY IDENTIFIED AS NANONICS N10138/224

THIS DRAWING IS A CONTROLLED DOCUMENT.

DWN	C SCHOLL	26 SEP 05
CHK	M STORRY	26 SEP 05
APVD	-	-

NAME: Tyco Electronics Corporation, Harrisburg, PA 17105

PRODUCT SPEC: PLUG ASSEMBLY, HORIZONTAL MOUNT, THROUGH HOLE, 2 TO 4 ROW, .050 SPACING  
 PLASTIC OR METAL, GOLD LEADS, ROHS COMPLIANT

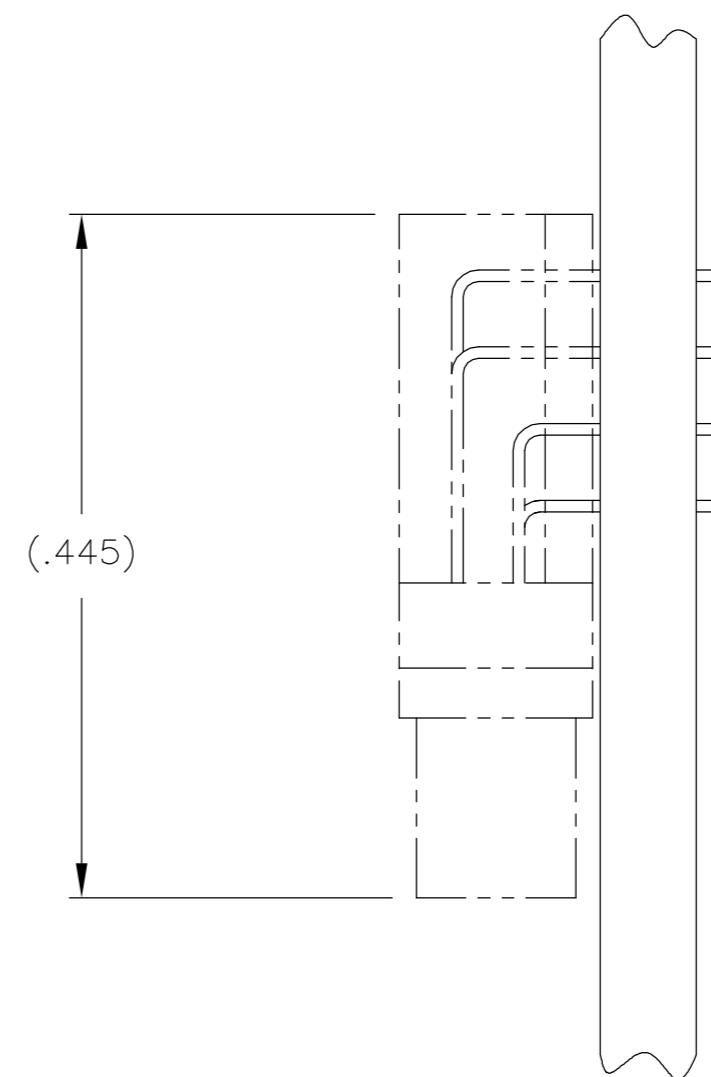
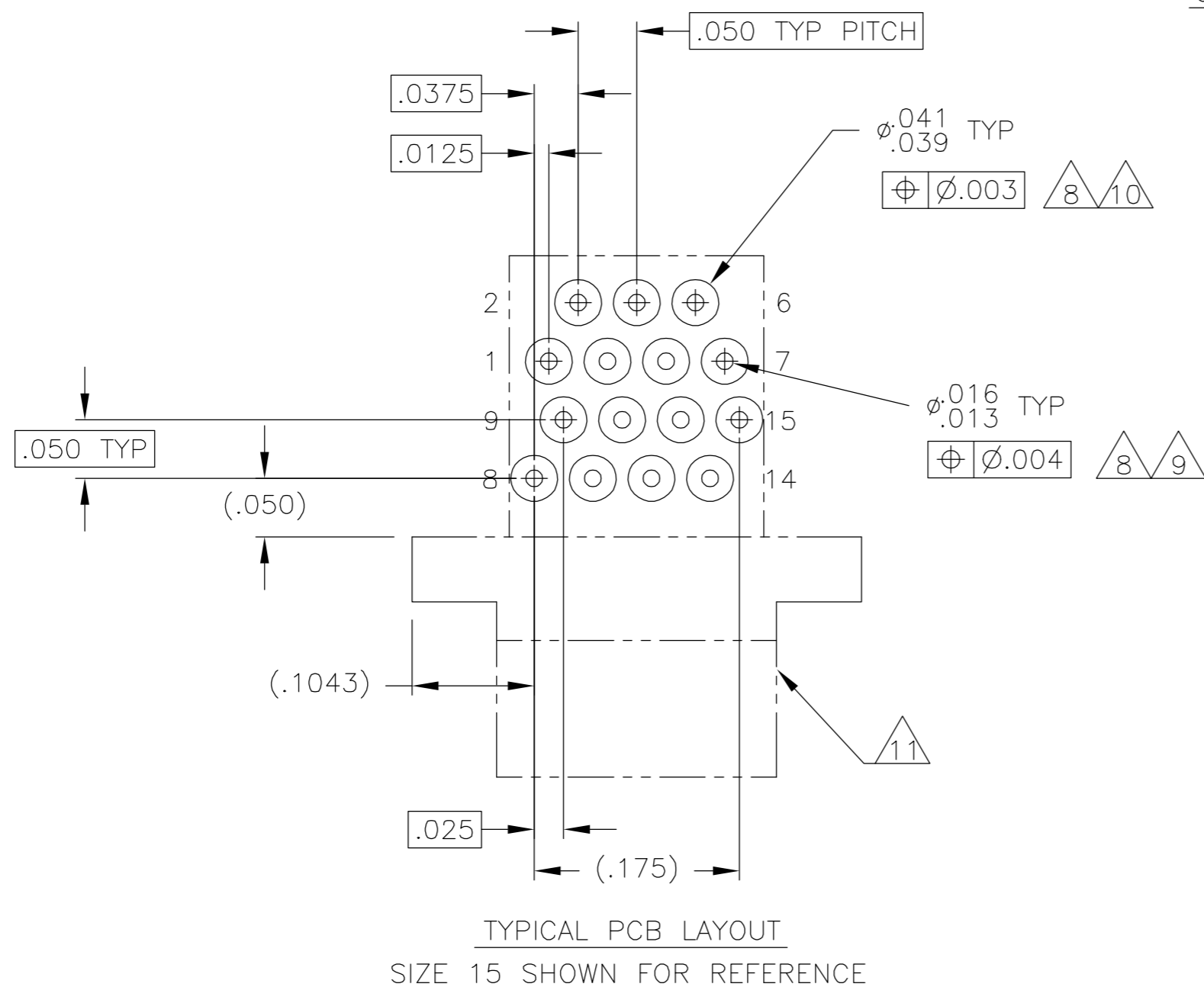
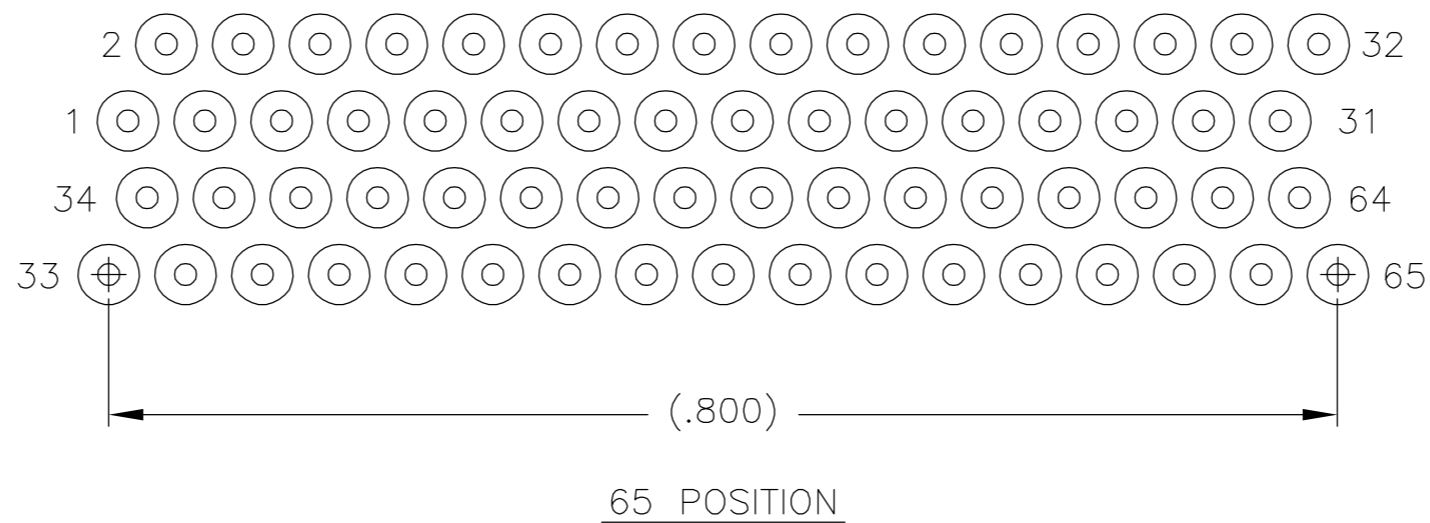
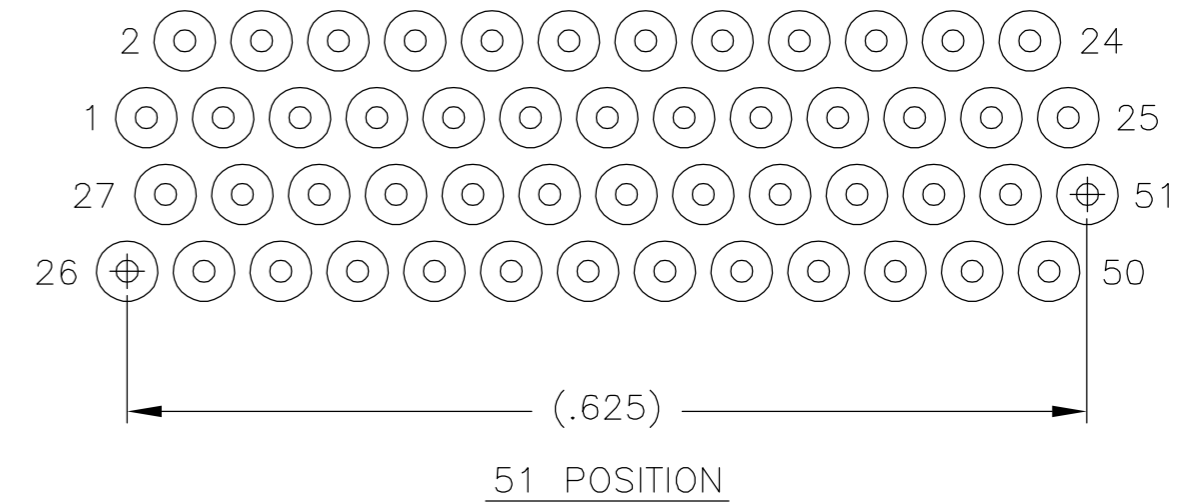
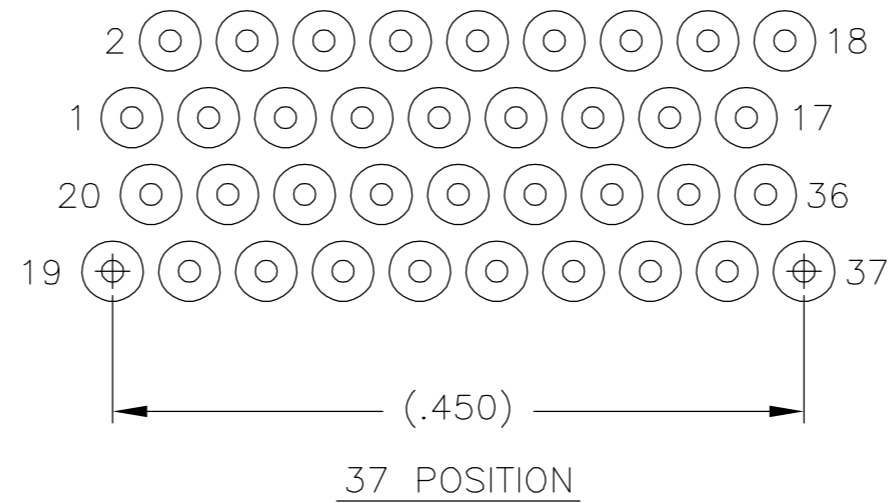
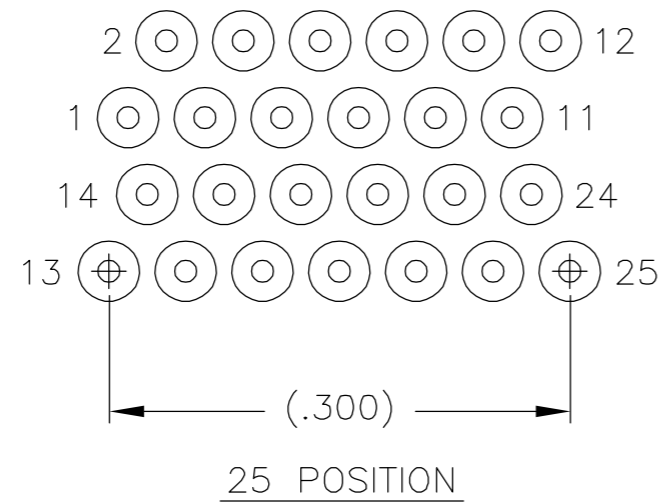
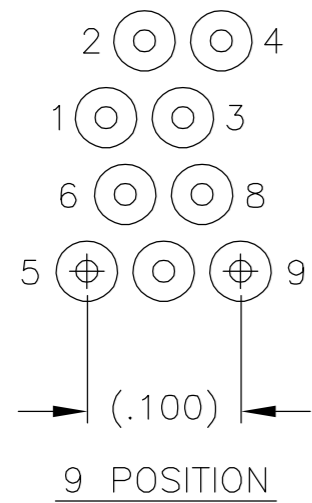
SIZE	CAGE CODE	DRAWING NO	RESTRICTED TO
A2	0PJN9	C=1589938	-

MATERIAL: SEE NOTES  
 FINISH: SEE NOTES  
 WEIGHT: -  
 CUSTOMER DRAWING

SCALE: 8:1  
 SHEET: 1 of 2  
 REV: A

THIS DRAWING IS UNPUBLISHED. RELEASED FOR PUBLICATION  
 © COPYRIGHT BY TYCO ELECTRONICS CORPORATION. ALL RIGHTS RESERVED.

LOC		DIST		REVISIONS			
P	LTR	DESCRIPTION	DATE	DWN	APVD		
-	-	SEE SHEET 1	-	-	-		



- POSITIONAL TOLERANCES FOR BASIC DIMENSIONED FEATURES ARE RELATIVE TO FIDUCIALS OR SOME SIMILAR DATUM REFERENCES DEFINED BY PCB DESIGNER
- PLATED THROUGH HOLES
- SOLDER PADS
- CONNECTOR ORIENTATION
- ALL THROUGH HOLE LAYOUTS ARE AS VIEWED FROM TOP OF PCB

THIS DRAWING IS A CONTROLLED DOCUMENT.		DWN C SCHOLL 26 SEP 05	<b>tyco</b> Tyco Electronics Corporation	
DIMENSIONS: INCHES		CHK M STORRY 26 SEP 05	Harrisburg, PA 17105	
TOLERANCES UNLESS OTHERWISE SPECIFIED:		APVD -	NAME	
0 PLC ± -		PRODUCT SPEC -	PLUG ASSEMBLY, HORIZONTAL MOUNT, THROUGH HOLE, 2 TO 4 ROW, .050 SPACING, PLASTIC OR METAL, GOLD LEADS, ROHS COMPLIANT	
1 PLC ± -		APPLICATION SPEC -	SIZE A2	CAGE CODE OPJN9
2 PLC ± .010		WEIGHT -	DRAWING NO C=1589938	RESTRICTED TO -
3 PLC ± .005		CUSTOMER DRAWING	SCALE 8:1	SHEET 2 of 2
4 PLC ± -			REV A	
ANGLES ± 1°				
FINISH SEE NOTES				