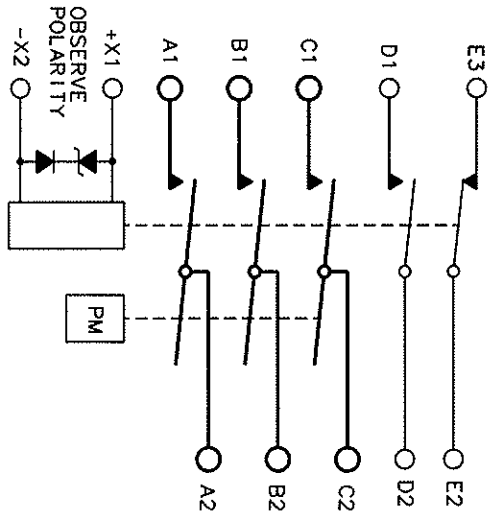
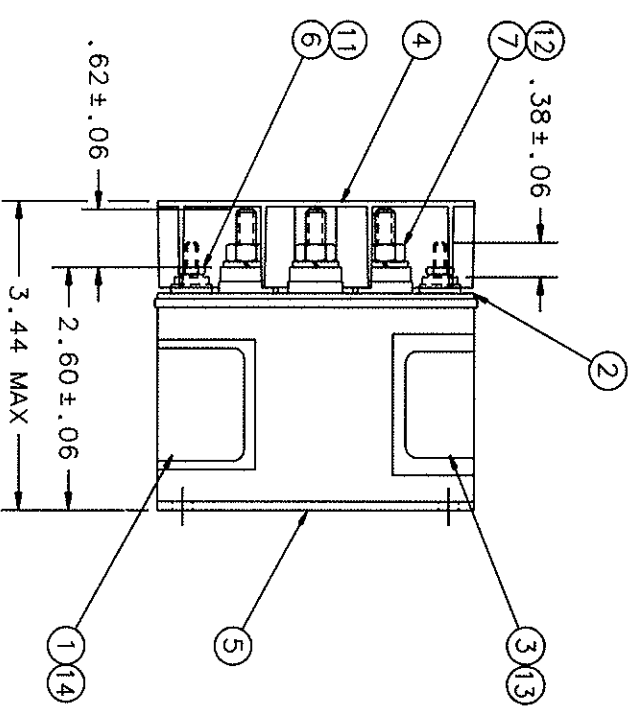
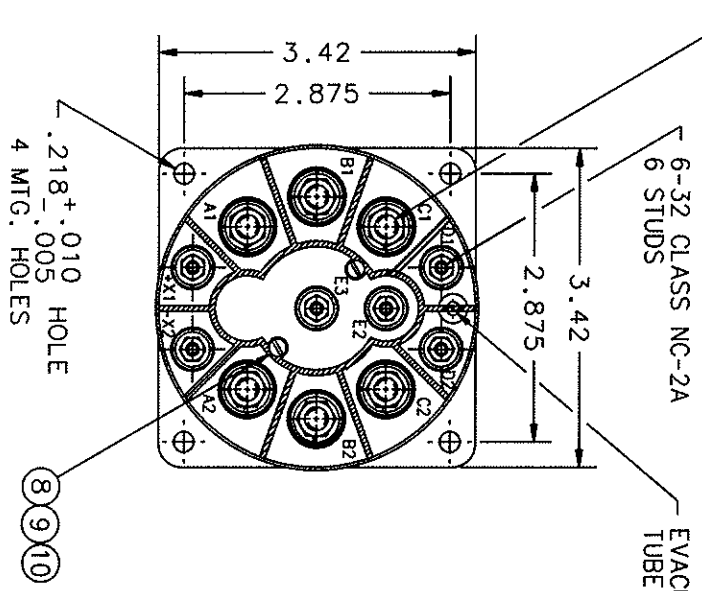


REV	DESCRIPTION	DATE	APPROVED
D	40948 2.60 WAS 2.58. *PRELIMINARY DRAWING * REMOVED	99/11/19	RS

REV	DESCRIPTION	DATE	APPROVED
D	40948 2.60 WAS 2.58. *PRELIMINARY DRAWING * REMOVED	99/11/19	RS



NOTES:
1. COIL TRANSIENT VOLTAGE LIMITED TO ±42 VOLTS REFERENCED TO ZERO VOLTS.

CONSTRUCTION MAIN CONTACTS CONFIGURATION VOLTAGE CURRENT RESISTIVE MOTOR
 AUXILIARY CONTACTS CONFIGURATION VOLTAGE CURRENT RESISTIVE
 COIL DATA DUTY CYCLE MAX OPERATE VOLTAGE NOMINAL OPERATE VOLTAGE MAX PICKUP VOLTAGE DROPOUT VOLTAGE
 ENVIRONMENTAL DATA TEMPERATURE ALTITUDE LIFE ELECTRICAL LIFE MECHANICAL WEIGHT MAX

HERMETICALLY SEALED
 3PST N.O., 115/200 VAC, 400 HZ
 120 AMP, 400 HZ
 120 AMP, 400 HZ
 100 AMP, 400 HZ
 2PST, 1 N.O., 1 N.C., 28 VDC
 5 AMP
 CONTINUOUS
 32 VDC
 28 VDC
 18 VDC AT +71°C
 1.5 TO 7.0 VDC

QTY	PART OR IDENTIFYING NO	DESCRIPTION	MATERIAL
14	1	39529-027	OVERLAY - NAME PLATE
13	1	39529-017	OVERLAY - WIRING DIAGRAM
12	6	51807-034	WASHER - 1/4 SPLIT LOCK
11	6	51806-014	WASHER - NO. 6 SPLIT LOCK
10	2	51805-011	WASHER - NO. 5 SPLIT LOCK
9	2	51701-180	WASHER .015 X .103 X 3/16
8	2	51205-291	SCREW 5-40 X 5/8 RD. HD.
7	6	50407-074	NUT 1/4-28 X 3/8 X 3/16 HEX.
6	6	50406-034	NUT 6-32 X 1/4 X 5/64 HEX.
5	1	20001-050	CONTACTOR ASSEMBLY - PRIMARY
4	1	17539-001	SHIELD - TERMINAL
3	1	18440-003	PLATE - WIRING DIAGRAM
2	1	18337-009	PLATE - BASE COVER
1	1	16043-001	PLATE - NAME

DR BY	RLS	99/12/14
CHK BY	RS	99/12/14
ENGR	RS	99/12/14
REL	RS	99/12/14
CONTR NO.		
GOVT APPVL		

SIZE	CODE IDENT	DWG NO.
C	74063	DH-25CU
SCALE	NONE	SHEET

HARTMAN ELECTRICAL MANUFACTURING
 MANFIELD, OHIO
 CONTACTOR - 3PST N.O.,
 120 A, 400 HZ, 28 VDC COIL
 093