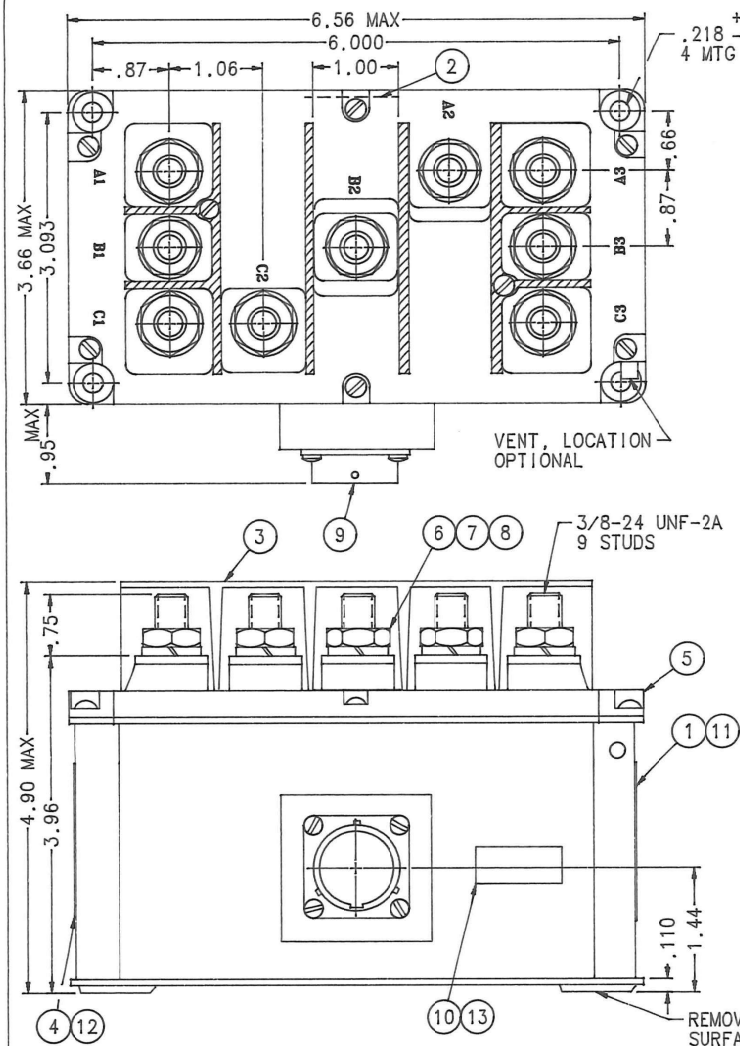


FAA/PMA

REVISIONS		RELEASED	REV. M
REV	DESCRIPTION	DATE	APPROVED
M	31243 REDRAWN; ADDED FIND NOS 11,12,& 13	96/10/23	RS



CONSTRUCTION MAIN CONTACTS CONFIGURATION VOLTAGE (NOMINAL) CURRENT: RES: INTER: AUX. CONTACTS CONFIGURATION

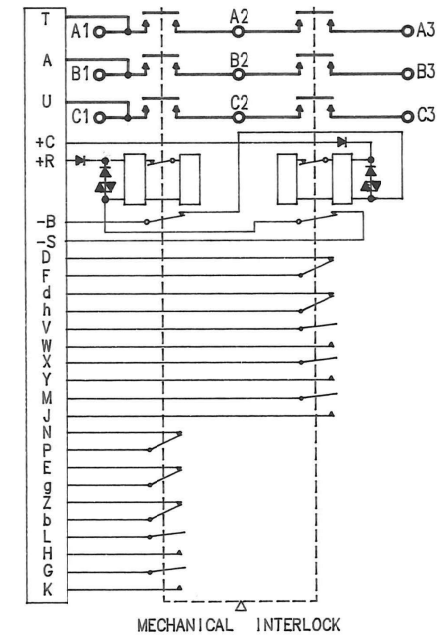
GASKET SEALED (VENTED) 3PDT CENTER OFF DOUBLE BREAK 115/200 VAC 400 HZ 225 AMPS 1000 AMPS 3 SPST N.C. R-S 2 SPST N.O. COIL 3 SPST N.O. C-B 2 SPST N.C. COIL 28 VDC OR 200 VAC 400 HZ 5 AMP 5 AMP 1 AMP

VOLTAGE (NOMINAL) CURRENT RES: IND: LAMP: COIL DATA DUTY CYCLE PICKUP VOLTAGE VOLTAGE (NOMINAL) DROPOUT PICKUP TIME DROPOUT TIME TRANSFER TIME CURRENT INRUSH: HOLD: RES. PICKUP: HOLD:

CONTINUOUS (ECONOMIZING) 16 VDC AT 20°C 18-30 VDC 1-14 VDC 25 MILLISECOND (MAX) 20 MILLISECOND (MAX) 25 MS MAX AT 28 VDC, 25°C 5 AMPS .350 AMPS 7 OHM ±20% AT 20°C 70 OHM ±20% AT 20°C

ENVIRONMENTAL DATA TEMPERATURE VIBRATION SHOCK ALTITUDE LIFE ELECTRICAL LIFE MECHANICAL WEIGHT MAX.

-65°F TO 160°F PER MIL-E-2272 PROCEDURE XII, CURVE A 15 G'S FOR 11 MILLISECONDS 50,000 FEET 50,000 CYCLES W/RATED LOAD 100,000 CYCLES 4.8 LBS.



- NOTES:
- THIS UNIT DESIGNED TO THE BASIC REQUIREMENTS OF MIL-R-6106.
 - TERMINAL COVERS NOT SHOWN ON TOP VIEW.
 - MECHANICAL INTERLOCK PREVENTS SIMULTANEOUS CLOSING OF BOTH SETS OF CONTACTS.
 - TERMINAL SHIELD MOLDED OF SELF EXTINGUISHING ZYTEL 51.
 - COIL TRANSIENT VOLTAGE LIMITED TO ±50 VOLTS REFERENCED TO ZERO VOLTS.
 - COIL POLARITY INDICATED ON UNIT WIRING DIAGRAM.
 - CONNECTOR IS COMPATIBLE WITH CONNECTOR DESIGNED TO MEET MIL-C-26482.
 - MAIN CONTACTS AND AUXILIARY CONTACTS OPERATE WITHIN 5 MS OF EACH OTHER.
 - MAX TORQUE 3/8-24 TERMINAL 150 INCH LBS.

- NOTES: (CONT)
- COIL CURRENT AT -65°F +160°F INRUSH AT 18 VDC 3.4 ±20% 1.84 ±20% HOLDING AT 18 VDC .328 ±20% .210 ±20% INRUSH AT 28 VDC 3.38 ±20% 2.55 ±20% HOLDING AT 28 VDC .524 ±20% .340 ±20%
 - CONTACT TRANSFER TIME, THE ELAPSED TIME FROM CONTACT OPENING ON ONE SIDE TO CONTACT CLOSING ON THE OTHER WHEN OPENING ONE COIL AND CLOSING THE OTHER.

CONFIGURATION CONTROLLED

FIND NO	QTY REQD	PART OR IDENTIFYING NO	NOMENCLATURE OR DESCRIPTION	FSCM NO	DRAWING OR SPECIFICATION	MATERIAL OR NOTE
13	1	39529-024	OVERLAY			
12	1	39529-019	OVERLAY			
11	1	39529-001	OVERLAY			
10	1	58400-027	PLATE, - FAA/PMA			
9	1	52418-004	CONNECTOR		PT02E-18-32P	
8	9	51807-084	WASHER - LOCK 3/8 SPLIT			BRONZE
7	9	51704-024	WASHER - FLAT 5/8 X 25/64 X .062			BRASS
6	9	50407-164	NUT - 3/8-24 X 5/8 X 7/32 HEX			BRASS
5	1	33515-030	CONTACTOR ASSEMBLY - PRIMARY			
4	1	32581-001	PLATE - WIRING DIAGRAM			
3	1	31319-010	TERMINAL SHEILD ASSY			
2	1	25695-001	PLATE - WARNING			
1	1	16043-001	PLATE - NAME			

UNLESS OTHERWISE SPECIFIED DIMENSIONS ARE IN INCHES TOLERANCES ON	HARTMAN ELECTRICAL MANUFACTURING MANSFIELD, OHIO		
2 PL DEC. 3 PL DEC. ANGLES	CONTACTOR		
* .03 * .010 * 1°	3PDT CENTER OFF DBL BRK 225 AMP 115/200 VAC 400 HZ		
DR BY RLS 96/11/14	SIZE C	CODE IDENT 74063	DWG NO. B-345LS
CHK BY RS 96/11/14	SCALE NONE		SHEET
ENGR DS 96/11/25			
MFG JH 96/11/20			
RELEASE			
CONTR NO.			
GOVT APPVL			