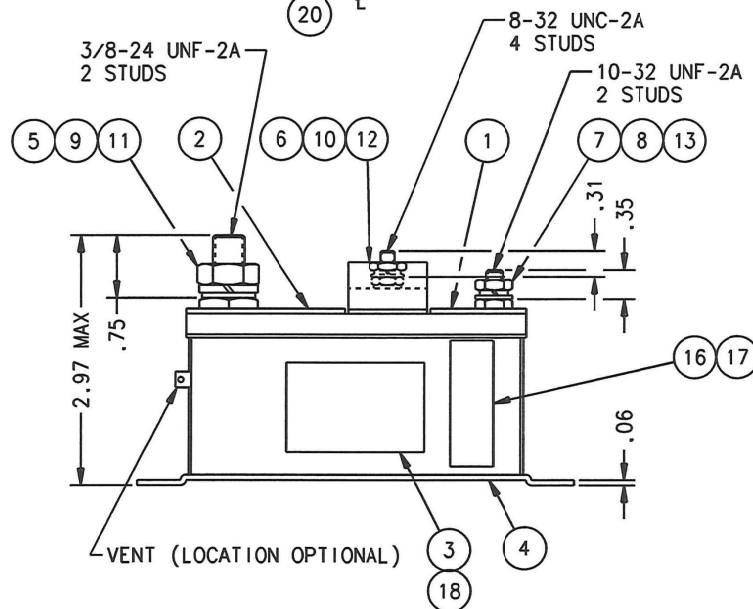
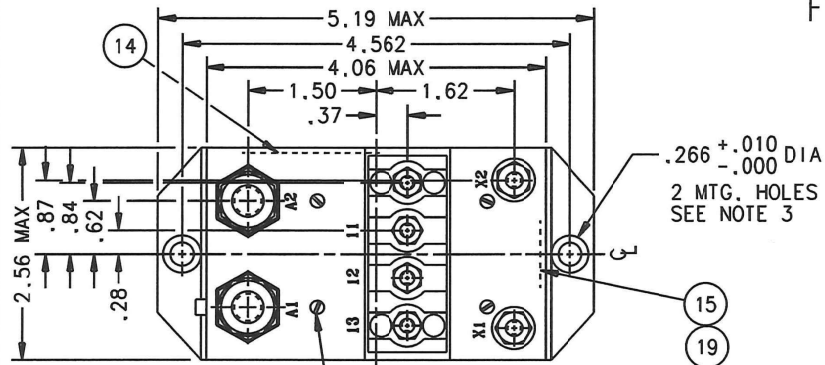


AR-770W

REV.  
M

FAA/PMA

REV		DESCRIPTION	RELEASED	DATE	APPROVED
L	25509	REDRAWN, ITEM 16 P/M WAS 38237-001, ITEM 17 ADDED, NICKEL PLT HRDW WAS CAD PLT		94/02/03	RS
M	37868	FIND NOS 18, 19, & 20 ADDED		98/11/09	RS



## NOTES:

1. THE CONTACTOR SHALL CONFORM TO THE REQUIREMENTS OF MIL-R-6106E TO THE EXTENT SPECIFIED HEREIN.
2. FORMAL VERIFICATION OF COMPLIANCE OF THIS DRAWING TO MIL-R-6106E SHALL BE TO THE EXTENT SPECIFIED BY HARTMAN DOCUMENT NO. QR-531AM.
3. FOR ELECTRICAL BONDING EXPOSE BARE METAL BY SANDING BOTTOM OF BOTH MOUNTING SURFACES AND SPOT-FACING TOP OF MOUNTING HOLES .437 DIA.
4. TERMINAL STUDS SHALL MEET THE REQUIREMENTS OF MIL-R-6106F PARAGRAPH 3.4.8. MAIN TERMINAL STUD MATERIAL IS STAINLESS STEEL.
5. MATERIAL IDENTIFICATION:  
BASE COVER PLATE - GLASS MAT POLYESTER PER MIL-M-14F  
COVER - ALUMINUM  
TERMINAL BASE - GLASS MELAMINE PER MIL-P-15037C

## CONSTRUCTION

NON-METALLIC BASE, GASKET SEALED (VENTED) CLASS A5,  
TYPE 11/MIL-R-6106E EXCEPT AS NOTED

MAIN CONTACTS  
CONFIGURATION  
VOLTAGE (NOMINAL)  
CURRENT: RES  
MOTOR LOAD

AUXILIARY CONTACTS  
CONFIGURATION  
VOLTAGE (NOMINAL)  
CURRENT: RES  
IND  
LAMP

COIL DATA  
DUTY CYCLE  
NOM. COIL VOLTAGE  
PICKUP MAX  
DROPOUT VOLTAGE  
RESISTANCE  
CURRENT

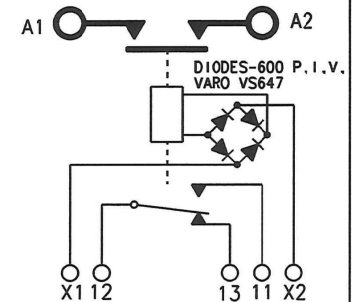
ENVIRONMENTAL DATA  
AMBIENT TEMP  
VIBRATION: SINE  
ACCELERATION  
SHOCK  
ALTITUDE  
LIFE ELECTRICAL  
LIFE MECHANICAL  
WEIGHT (MAX)

S.P.S.T N.O. SIDESTABLE  
28 VDC  
300 AMP  
3000 AMP

S.P.D.T.  
28 VDC, 115 VAC, 400 HZ  
5 AMP  
5 AMP  
3 AMP

CONTINUOUS  
115 VAC 400 HZ  
75 VAC 400 HZ AT 25°C  
10 VOLTS TO 35 VOLTS AT 25°C  
1440 OHM ±20% AT 25°C  
0.1 AMP MAX AT 25°C

-55°C TO +71°C  
0.06" D.A. FROM 10 TO 57 HZ  
10g FROM 57 TO 500 HZ  
10g  
25g MAXIMUM FOR 6 TO 9 MS  
50,000 FEET MAXIMUM  
50,000 CYCLES MINIMUM  
100,000 CYCLES MINIMUM  
2 LBS.



20	4	51200-020	SCREW-NO 4 SHEET METAL			S. STEEL
19	1	39529-007	OVERLAY-WIRING DIAGRAM			
18	1	39529-001	OVERLAY-NAME PLATE			
17	1	39529-024	OVERLAY			
16	1	58400-119	PLATE - FAA/PMA			
15	1	41877-001	PLATE - WIRING DIAGRAM			
14	1	17959-001	PLATE - WARNING			
13	2	51810-031	WASHER - LOCK NO.10 X.337 X .047 SPLIT	MS35338-43		STEEL
12	4	51808-021	WASHER - LOCK NO.8 X .296 X .040 SPLIT	MS35338-42		STEEL
11	2	51807-071	WASHER - LOCK 3/8 X .688 X .094 SPLIT	MS35338-46		STEEL
10	4	51702-431	WASHER - 3/8 X 11/64 X .032	AN960-8		STEEL
9	2	51704-161	WASHER - 5/8 X .390 X .062	AN960-616		STEEL
8	2	51702-851	WASHER - 7/16 X 13/64 X .032	AN960-10L		STEEL
7	2	50410-061	NUT - 10-32 X 3/8 X 1/8 HEX	MS20341-10S		STEEL
6	4	50408-081	NUT - 8-32 X 5/16 X 3/32 HEX	MS20341-8S		STEEL
5	2	50407-141	NUT - 3/8-24 X 9/16 X 9/32 HEX	MS20341-616S		STEEL
4	1	29340-010	PRIMARY ASSEMBLY			
3	1	16043-001	PLATE - NAME			
2	1	15749-003	PLATE - BASE COVER			
1	1	15749-002	PLATE - BASE COVER			

FIND NO	QTY RECD	PART OR IDENTIFYING NO	NOMENCLATURE OR DESCRIPTION	DRAWING OR SPECIFICATION	MATERIAL OR NOTE
UNLESS OTHERWISE SPECIFIED DIMENSIONS ARE IN INCHES TOLERANCES ON			HARTMAN ELECTRICAL MANUFACTURING MANSFIELD, OHIO		
2 PL DEC. 3 PL DEC. ANGLE'S			DR BY RLS 98/12/16	CONTACTOR - S.P.S.T. SIDESTABLE 300 AMPS, 28 VDC	
± .06 ± .010 ± 1°			CHK BY RS 98/12/16	93	
			ENGR JZ 99/10/16	093	
			MFG CC 99/01/07	SIZE CODE IDENT DWG NO. C 74063 AR-770W	
			RELEASE	SCALE 1/2 SHEET	
			CONTR NO.		
			GOVT APPVL		