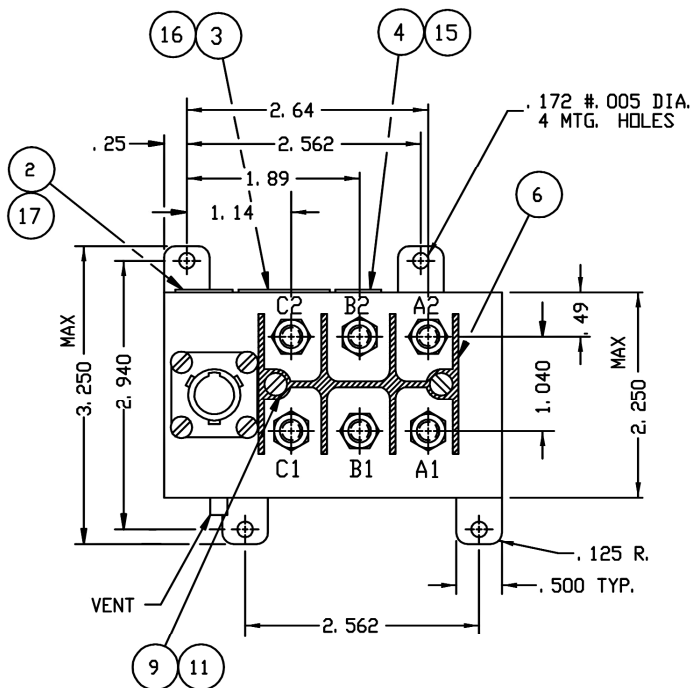


FAA/PMA

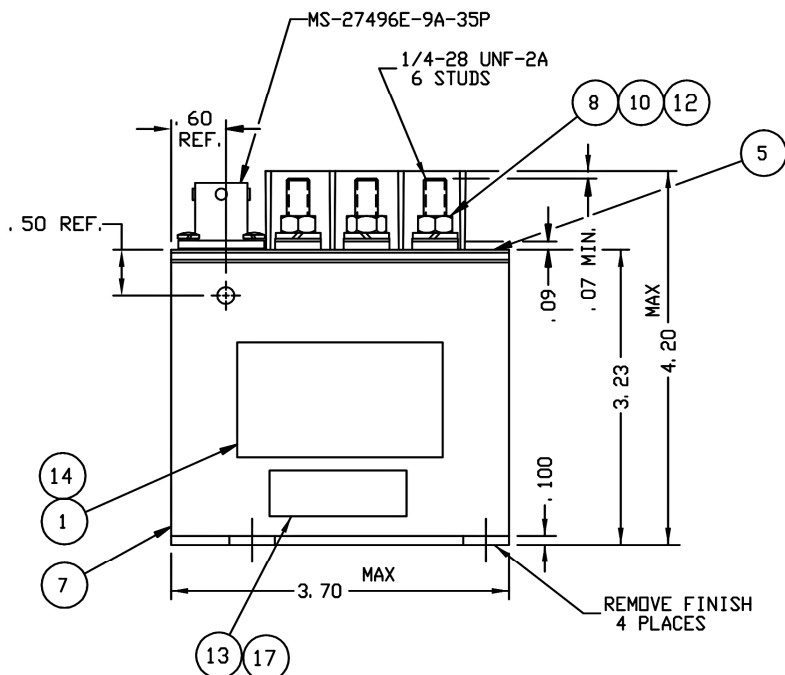
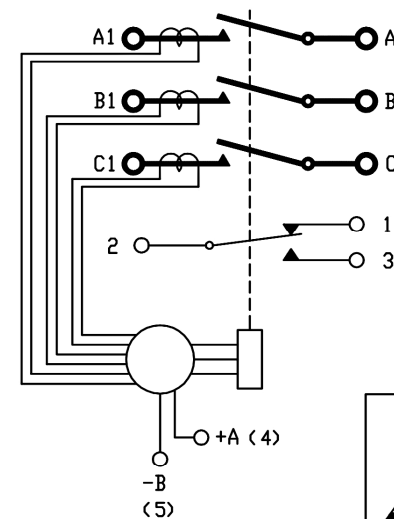
REV. #		DESCRIPTION	RELEASED DATE	APPROVED
E	28805	ADDED ITEMS 13 THRU 17	95/09/14	RS
F	31253	SHOCK G LEVEL WAS 50	96/10/22	RS
G	14-005818	.50 REF WAS .60; .60 REF WAS .60	14/04/17	MDM



NOTE: FOR PROPER OPERATION, PIN A REQUIRES 18 TO 28 VDC

**CONSTRUCTION**  
**MAIN CONTACTS**  
 CONFIGURATION: 3PST SIDE STABLE  
 VOLTAGE (NOM.): 115/208 VAC 400 - 610 HZ  
 CURRENT RES: 100 AMP 50,000 CYCLES  
 MOTOR RUPTURE: 100 AMP 50,000 CYCLES  
 1000 AMP  
**OPERATE TIMES:**  
 CLOSING: 35 MS MAX. OVERRIDE AT 28 VDC  
 OPENING: 25 MS MAX. OVERRIDE AT 28 VDC  
 BOUNCE: 3 MS MAX.  
**AUXILIARY CONTACTS**  
 CONFIGURATION: SPDT  
 VOLTAGE: 28 VDC 115 VAC 400 - 610 HZ  
 CURRENT RES: 5 AMP  
 IND. LAMP: 3 AMP  
**COIL DATA**  
 DUTY CYCLE: CONTINUOUS ECONOMIZED  
 MIN. OPER. VOLTAGE: 18VDC AT 85  
 MAX. OPER. VOLTAGE: 32 VDC  
 RESISTANCE: PICKUP - 11.3 OHMS # 10%  
 HOLD - 114.5 OHMS # 10%  
**ENVIRONMENTAL DATA**  
 OPERATE TEMP: -55 TO +85  
**VIBRATION:** SINE .036 DA FROM 10 TO 50 HZ  
**SHOCK:** 10 g FROM 55 TO 2000 HZ  
 ALTITUDE: 9 g MAX FDR 10 TO 12 MS  
 LIFE MECHANICAL: 50,000 FT. MAX  
 WEIGHT MAX: 100,000 CYCLES MIN.  
 1.55 LBS.

**TRIP POINTS**  
 CURRENT #10%  
 151 AMP  
 185 AMP  
 237 AMP  
**TRIP TIME**  
 3-5 SEC  
 2-2.9 SEC  
 1-2.5 SEC



FIND NO	QTY REQD	PART OR IDENTIFYING NO	NOMENCLATURE OR DESCRIPTION	FSCM NO	DRAWING OR SPECIFICATION	MATERIAL OR NOTE
17	2	39529-024	OVERLAY			
16	1	39529-009	OVERLAY			
15	1	39529-007	OVERLAY			
14	1	39529-001	OVERLAY			
13	1	58400-164	PLATE - FAA/PMA			
12	6	51807-034	WASHER - LOCK, NO. 1/4, SPLIT			BRONZE
11	2	51804-010	WASHER - LOCK, NO. 4, SPLIT			BRONZE
10	6	51703-064	WASHER - FLAT 1/2 X 17/64 X .032			BRASS
9	2	51204-960	SCREW 4-40 X 7/8 RD. HD.			BRASS
8	6	50407-074	NUT 1-4-28 X 3/8 X 3/16 HEX			BRASS
7	1	43154-010	CONTACTOR ASSEMBLY - PRI.			
6	1	42726-001	SHIELD - TERMINAL			
5	1	42912-001	PLATE - BASE COVER			
4	1	41211-001	PLATE - WARNING			
3	1	42913-002	PLATE - WIRING DIAGRAM			
2	1	25695-001	PLATE - WARNING			
1	1	16043-001	PLATE - NAME			

FIND NO	QTY REQD	PART OR IDENTIFYING NO	NOMENCLATURE OR DESCRIPTION	FSCM NO	DRAWING OR SPECIFICATION	MATERIAL OR NOTE																																			
<table border="1"> <tr> <td colspan="3"> </td> <td colspan="4">                     REMOTE POWER CONTROLLER                      115/208 VAC 3PST 100 AMP                 </td> </tr> <tr> <td colspan="3">                     DR BY EAD 96/10/31                      CHK BY RB 96/11/06                      ENGR EAD 96/10/31                      MFG JH 96/11/06                 </td> <td colspan="4">                     093                 </td> </tr> <tr> <td colspan="3">                     UNLESS OTHERWISE SPECIFIED                      DIMENSIONS ARE IN INCHES                      TOLERANCES IN                 </td> <td colspan="4">                     RELEASE                      CONTR NO.                      GOVT APPVL                 </td> </tr> <tr> <td colspan="3">                     2 PL DEC. 3 PL DEC. ANGLES                 </td> <td colspan="4">                     SIZE C CODE IDENT 74063 DWG NO. RA-3100D                 </td> </tr> <tr> <td colspan="3">                     ±.06 ±.010 ±1                 </td> <td colspan="4">                     SCALE NONE SHEET 1 OF 1 REF TE P/N: 1616133-1                 </td> </tr> </table>										REMOTE POWER CONTROLLER 115/208 VAC 3PST 100 AMP				DR BY EAD 96/10/31 CHK BY RB 96/11/06 ENGR EAD 96/10/31 MFG JH 96/11/06			093				UNLESS OTHERWISE SPECIFIED DIMENSIONS ARE IN INCHES TOLERANCES IN			RELEASE CONTR NO. GOVT APPVL				2 PL DEC. 3 PL DEC. ANGLES			SIZE C CODE IDENT 74063 DWG NO. RA-3100D				±.06 ±.010 ±1			SCALE NONE SHEET 1 OF 1 REF TE P/N: 1616133-1			
			REMOTE POWER CONTROLLER 115/208 VAC 3PST 100 AMP																																						
DR BY EAD 96/10/31 CHK BY RB 96/11/06 ENGR EAD 96/10/31 MFG JH 96/11/06			093																																						
UNLESS OTHERWISE SPECIFIED DIMENSIONS ARE IN INCHES TOLERANCES IN			RELEASE CONTR NO. GOVT APPVL																																						
2 PL DEC. 3 PL DEC. ANGLES			SIZE C CODE IDENT 74063 DWG NO. RA-3100D																																						
±.06 ±.010 ±1			SCALE NONE SHEET 1 OF 1 REF TE P/N: 1616133-1																																						