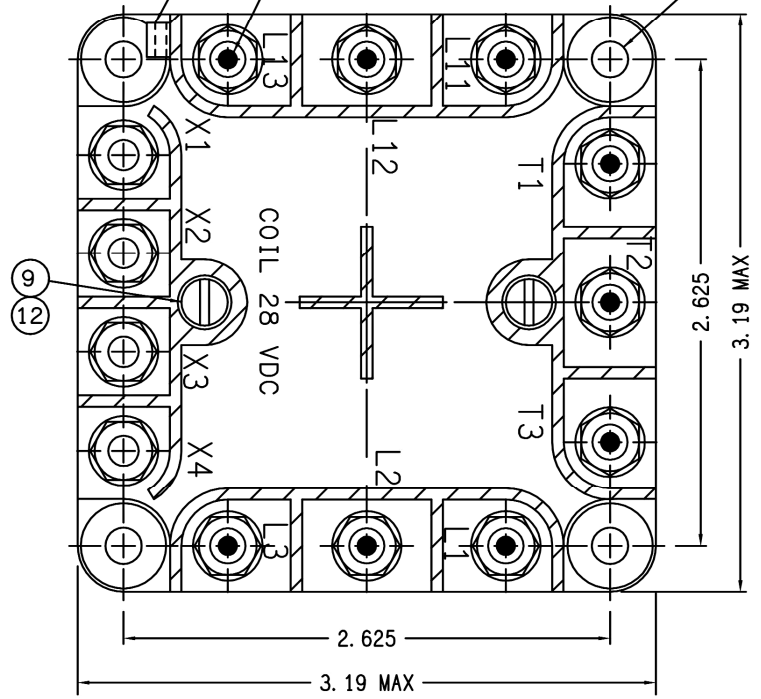


REVISIONS		RELEASED	
SYM	DESCRIPTION	DATE	APPROVED
K 33637	REDRAWN, FIND NOS 4, 15, & 16 ADDED	97/09/08	RS
AB 11-024834	ITEM 8 WAS -054	11/12/01	CB

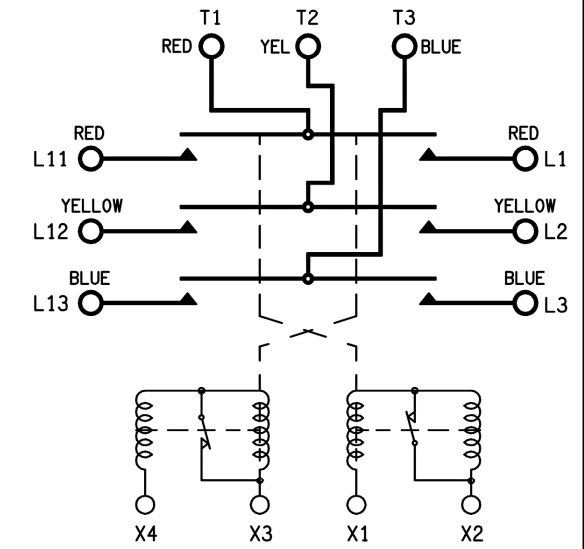
VENT LOCATION OPTIONAL

FOR COLOR CODE OF TERMINALS SEE WIRING DIAGRAM

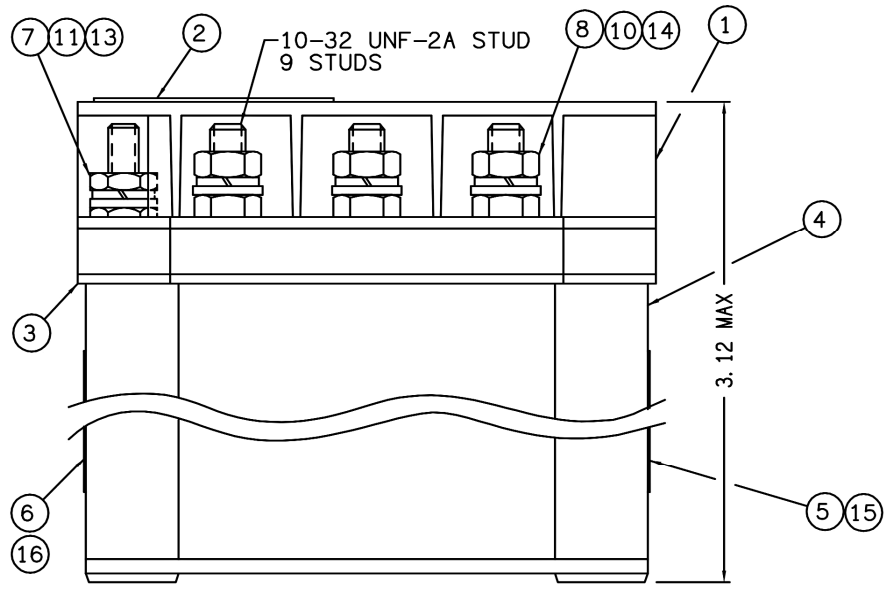
.196^{+0.010}_{-.005} DIA HOLE
4 MTC HOLES



OPERATING VOLTAGE 28 VDC
 COIL 28 VDC
 CONTACTS 200 VAC, 400HZ
 CONTACT RATING 50 AMP/PHASE
 CONTACTS TPDT, NO
 PICKUP VOLTAGE 18 V MAX (HOT)
 DROPOUT VOLTAGE 7⁺⁰_{-5.5} VOLTS
 COIL CURRENT AT 29 VDC, 25°C
 INITIAL 5 AMP
 HOLDING .5 AMP
 OPERATING TEMP RANGE -55°C TO +71°C
 MAX WEIGHT 1 LB 5 OZ



- NOTES:
- SHOW WIRING DIAGRAM ON COVER
 - "DANGER HIGH VOLTAGE" TO BE STAMPED ON TERMINAL SHIELD



16	1	39529-023	OVERLAY-WIRING DIAGRAM			
15	1	39529-001	OVERLAY-NAME PLATE			
14	9	51810-054	LOCKWASHER, NO. 10, SPLIT		BRONZE	
13	4	51808-064	LOCKWASHER, NO. 8, SPLIT		BRONZE	
12	2	51806-031	LOCKWASHER, NO. 6 INTERNAL TOOTH		BRONZE	
11	4	51712-104	WASHER, 3/8 OD, 11/64 ID, .032 THK		BRASS	
10	9	51712-194	WASHER, 7/16 OD, .203 ID, .031 THK		BRASS	
9	2	51206-644	SCREW, 6-32 X 3/4 LG, RD HD		BRASS	
8	9	50410-174	NUT, 10-32, 5/16 HEX, 9/64 THK		BRASS	
7	4	50408-034	NUT, 8-32, 5/16 HEX, 3/32 THK		BRASS	
6	1	25272-001	WIRING DIAGRAM			
5	1	16043-001	PLATE - NAME			
4	1	15586-040	CONTACTOR ASSEMBLY - PRIMARY			
3	1	13936-001	PLATE - BASE COVER			
2	1	12771-001	PLATE - WARNING			
1	1	12531-002	SHIELD - TERMINAL			
FIND NO	QTY REQD	PART OR IDENTIFYING NO	NOMENCLATURE OR DESCRIPTION	FSCM NO	DRAWING OR SPECIFICATION	MATERIAL OR NOTE

UNLESS OTHERWISE SPECIFIED DIMENSIONS ARE IN INCHES TOLERANCES ON

2 PL DEC. 13	PL DEC. 13	ANGLES
±.03	±.010	± 1°

DR BY RLS 97/09/23
 CHK BY RS 97/09/23
 ENGR WER 97/10/01
 MFG JH 97/10/01

SCALE NONE SHEET

STE
 Hartman™ Division • 175 N. DIAMOND STREET MANSFIELD, OHIO 44902

CONTACTOR - TPDT NO 093

DWG NO. B-140AL

REF TE P/N 1616510-1