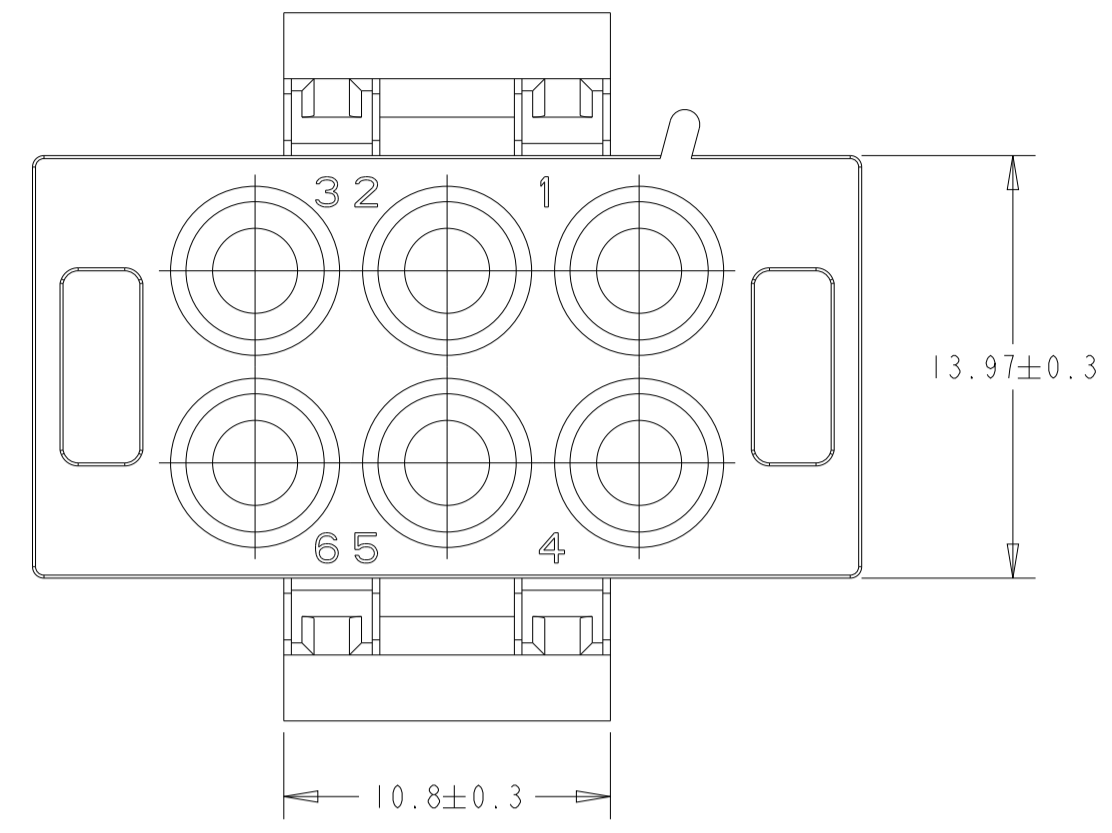
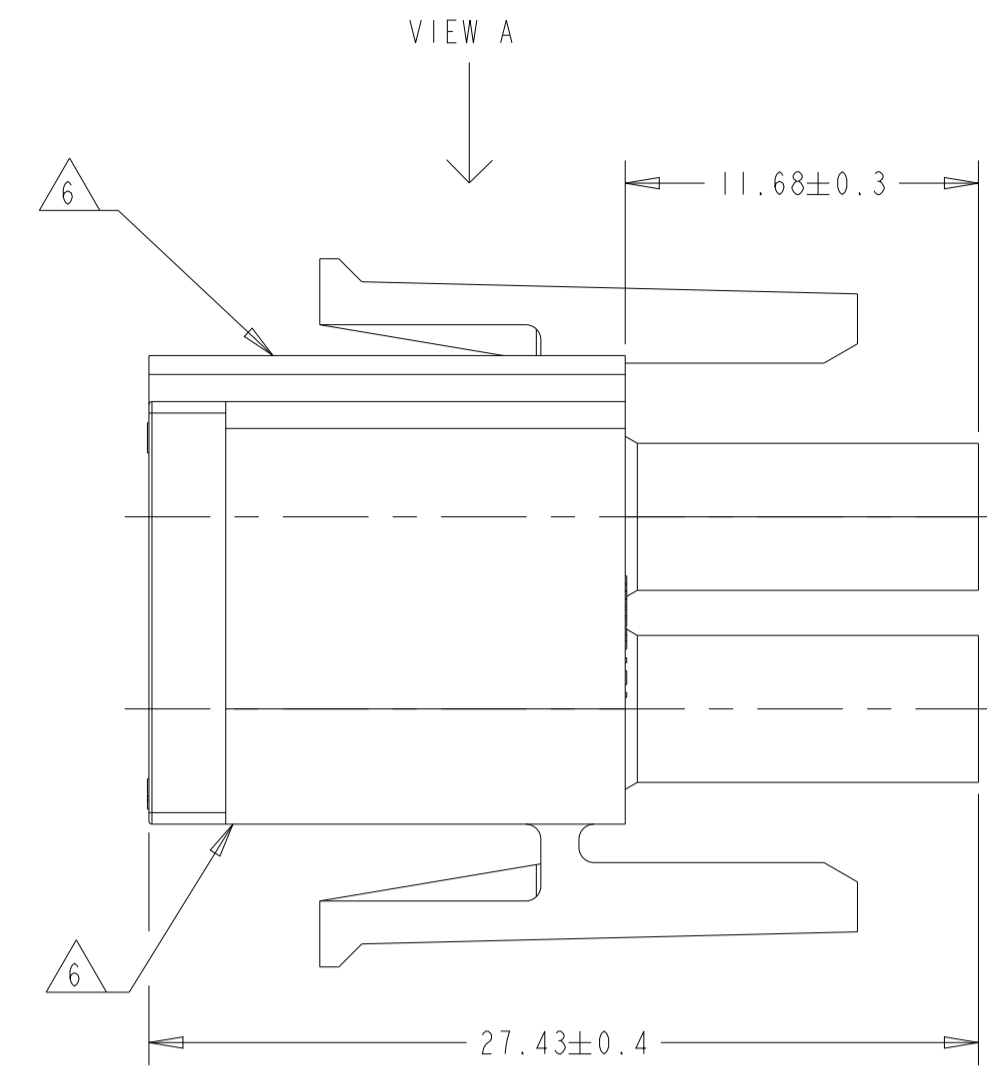
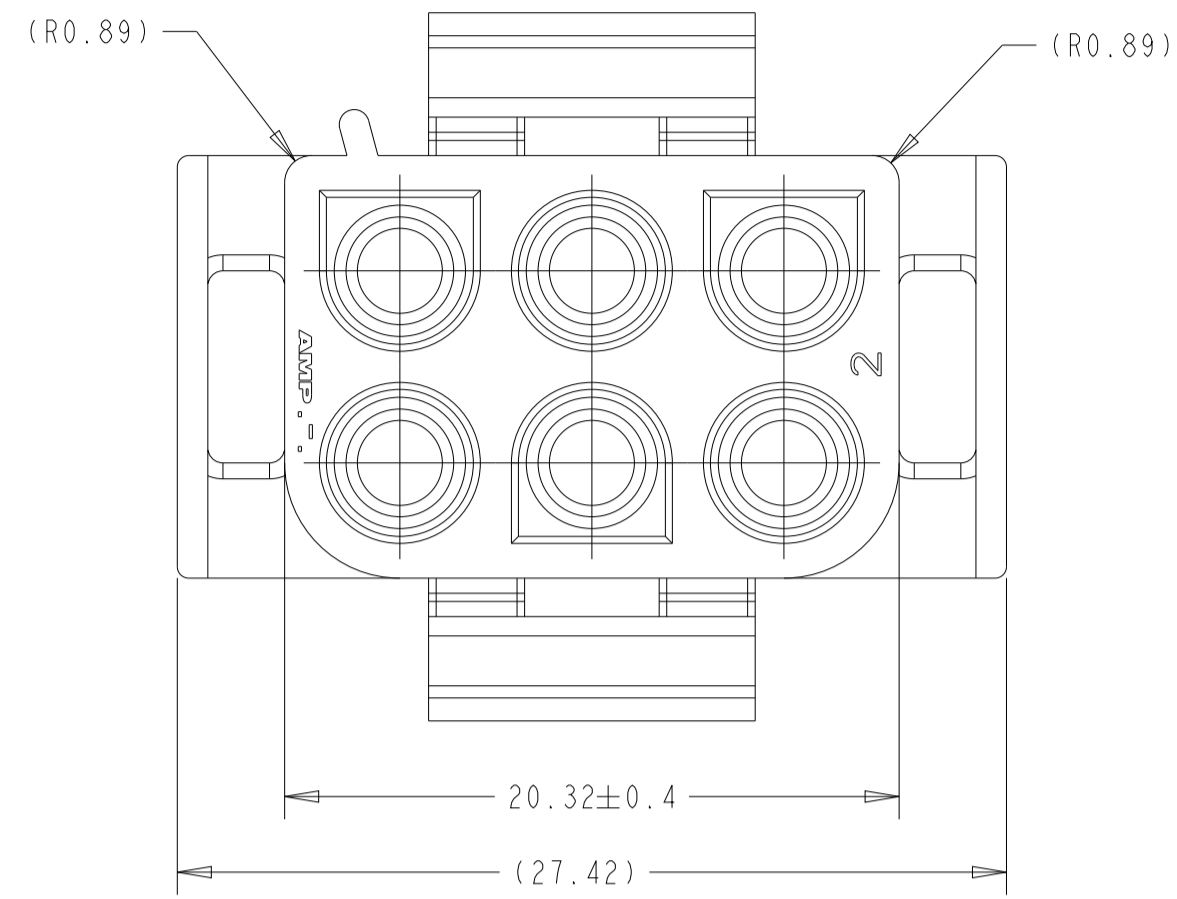
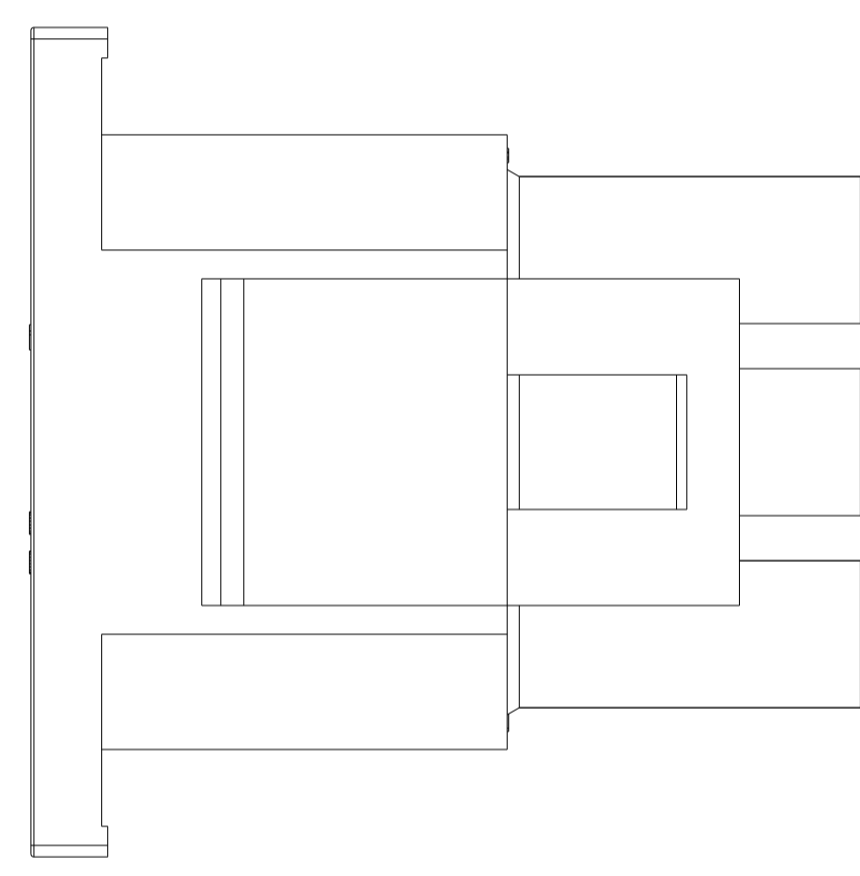


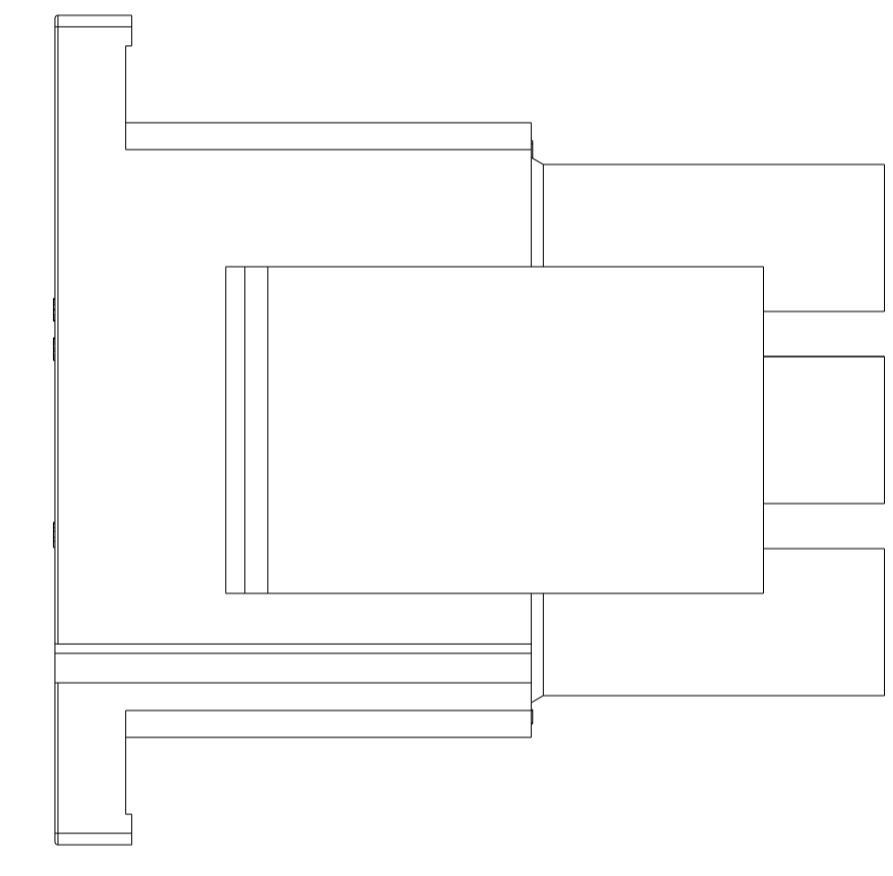
REVISIONS				
P	LTM	DESCRIPTION	DATE	APVD
A9		REVISED PER ECR-17-015449	26OCT2017	BDA KR
B		REVISED PER ECR-20-100839	07JAN2021	PC JS
C		REVISED PER ECR-24-222968	09OCT2024	AK BR



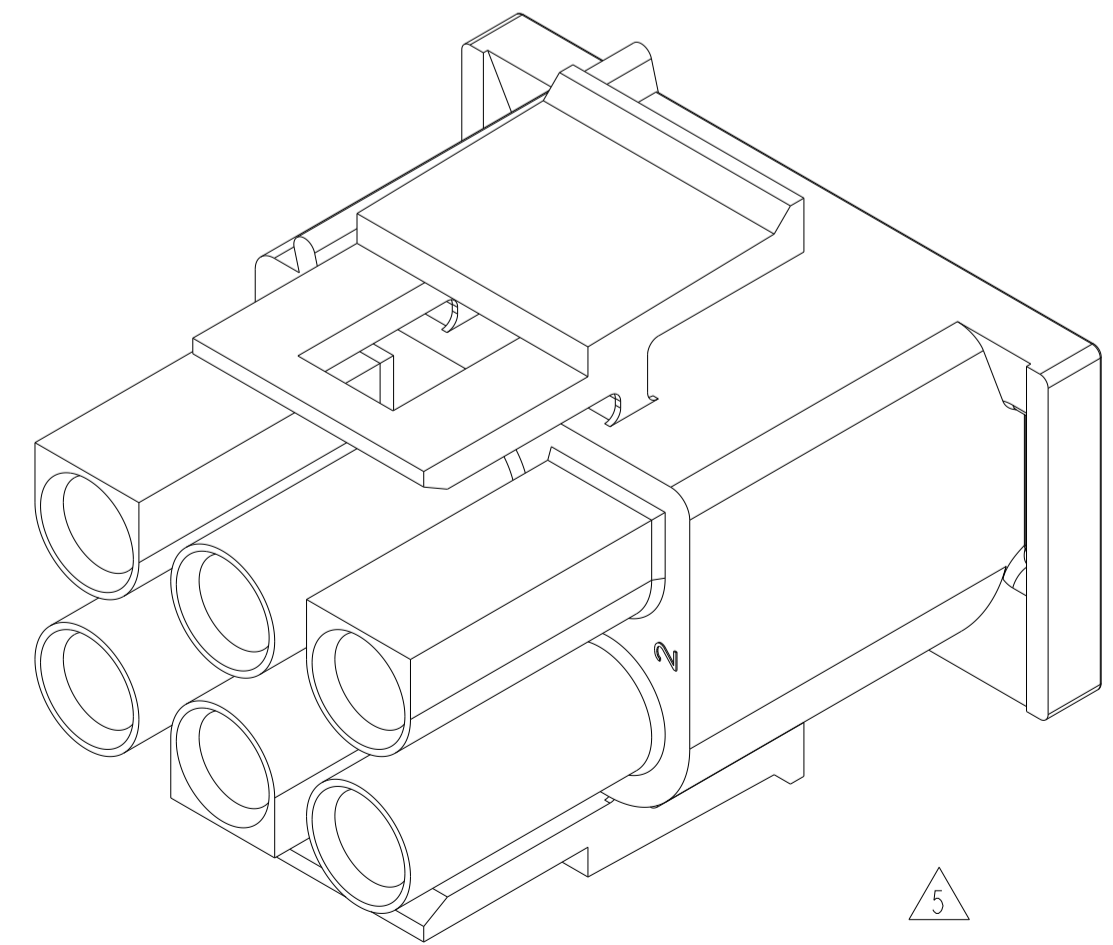
- SMALL NICKS ARE PERMITTED ON THE CIRCUIT TOWERS WHICH COULD INCREASE THE INITIAL HOUSING MATING FORCE UP TO 4.4 NEWTONS (10 LBS). NO INDIVIDUAL NICKED TOWER SHALL INCREASE THIS FORCE BY OVER 2.2 NEWTONS (.5 LBS)
 - DIMENSIONS SHOWN REPRESENT PRODUCT IN DRY, AS MOLDED, CONDITION. ADDITIONAL 2% GROWTH DUE TO SUBSEQUENT MOISTURE ABSORPTION MAY OCCUR AND SHOULD BE ACCOUNTED FOR.
- 3 PRELIMINARY PART NOT RELEASED FOR PRODUCTION
 - 4 STANDARD LATCH VERSION
 - 5 WINDOW LATCH VERSION
 - 6 CSA CERTIFICATION LOGO LOCATED AT LEAST ONE SIDE OF THE HOUSING, APPROXIMATELY AS SHOWN



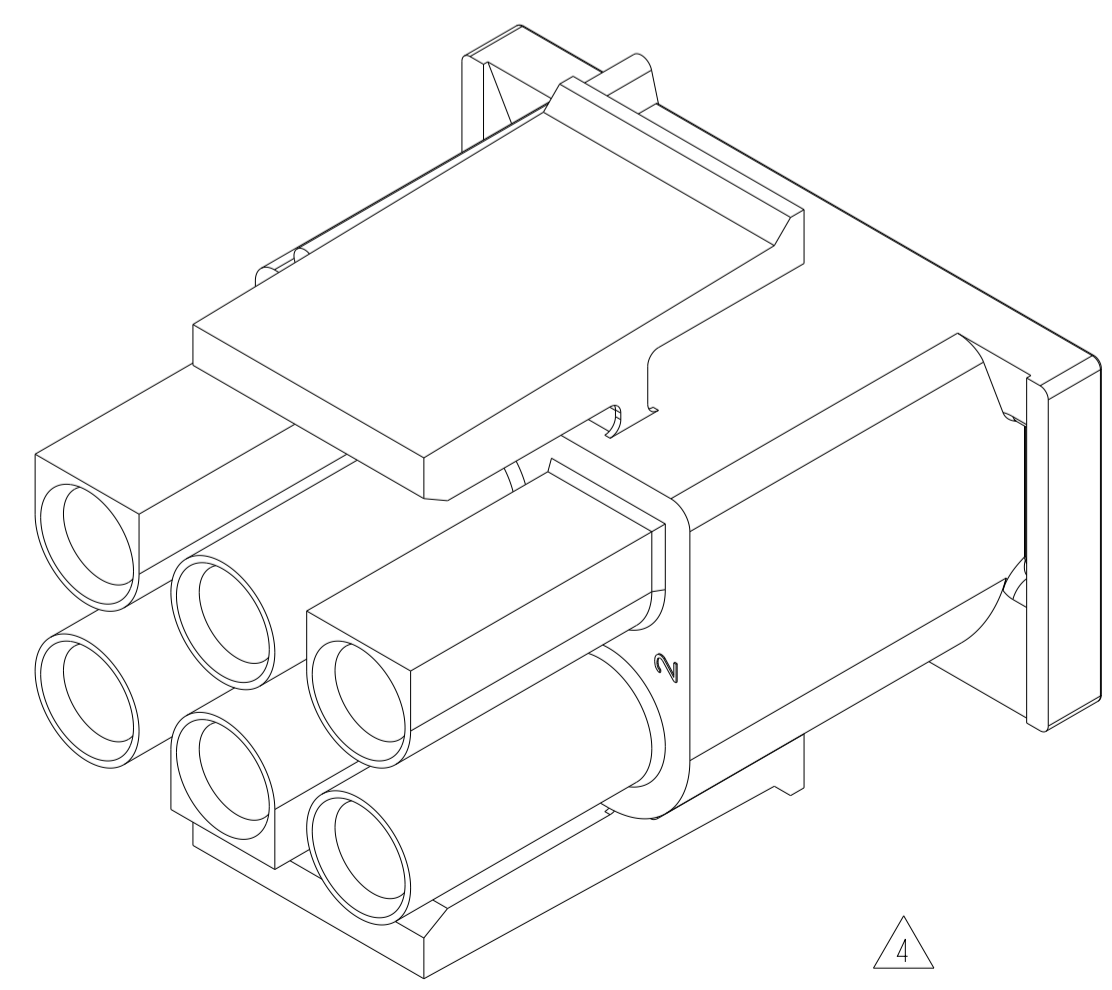
VIEW A FOR P/N I-1644055-3.



VIEW A FOR P/Ns:
I-1644055-1,
I-1644055-1,
I-1644055-2.



I-1644055-3.



I-1644055-1,
I-1644055-1,
I-1644055-2.

5	PA66 V0 GWT 750°C WITHOUT FLAME	NATURAL	I-1644055-3 <i>(WINDOW LATCH VERSION)</i>
4	PA66 V0 GWT 750°C WITHOUT FLAME	NATURAL	I-1644055-2
3 4	PA6 V0	NATURAL	I-1644055-1
4	PA6 V2 GWT 750°C WITHOUT FLAME	NATURAL	I-1644055-1
REMARK	MATERIAL	COLOUR	PN
THIS DRAWING IS A CONTROLLED DOCUMENT.		DWN: A. HERRANZ 16JAN2007 CHK: J. SALO 23JAN2007 APVD: -	
DIMENSIONS: mm		NAME: PLUG 6 CIRCUIT, UNIVERSAL MATE-N-LOK	
TOLERANCES UNLESS OTHERWISE SPECIFIED:		PRODUCT SPEC: 108-1031	
0 PLC ± 1 PLC ± 2 PLC ± 3 PLC ± 4 PLC ± ANGLES ± FINISH ±		APPLICATION SPEC: -	
MATERIAL: SEE TABLE		SIZE: A CAGE CODE: 00779 DRAWING NO: 1644055	
CUSTOMER DRAWING		RESTRICTED TO: -	
SCALE: 4:1		SHEET: 1 OF 1	
		REV: C	