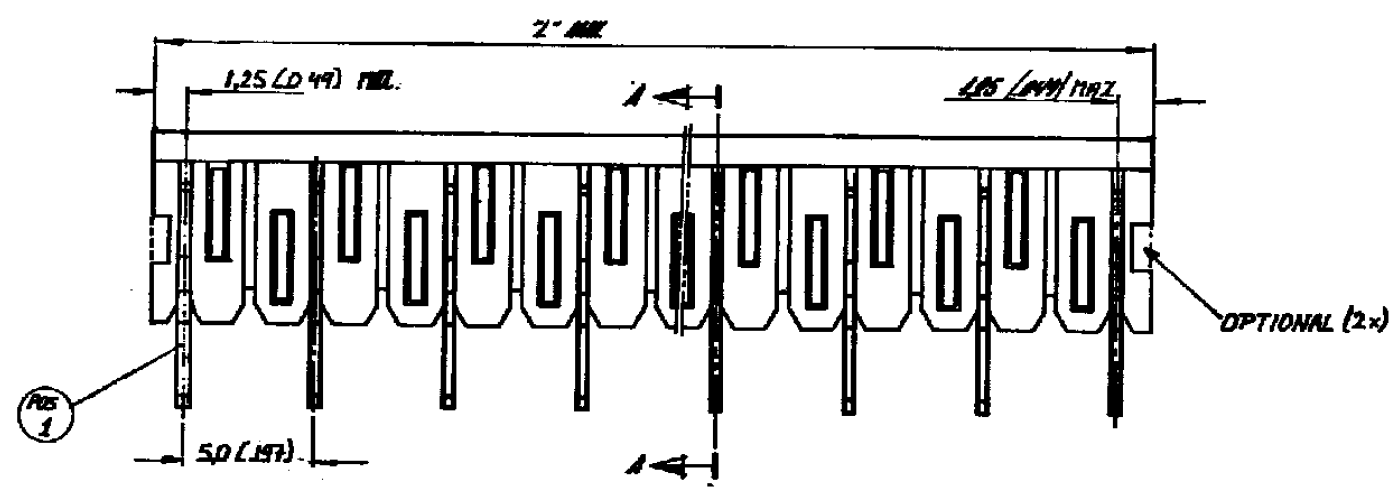
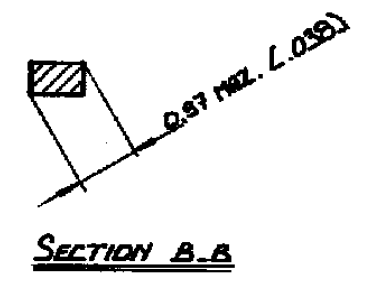
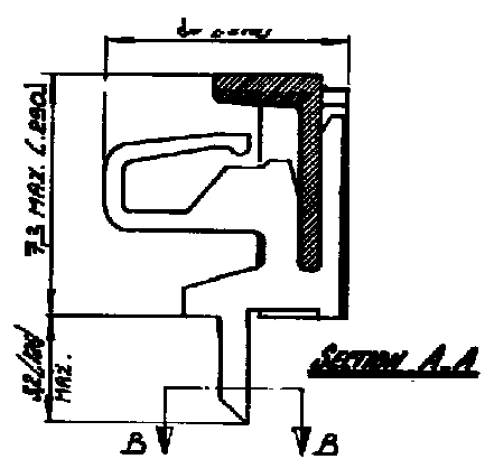
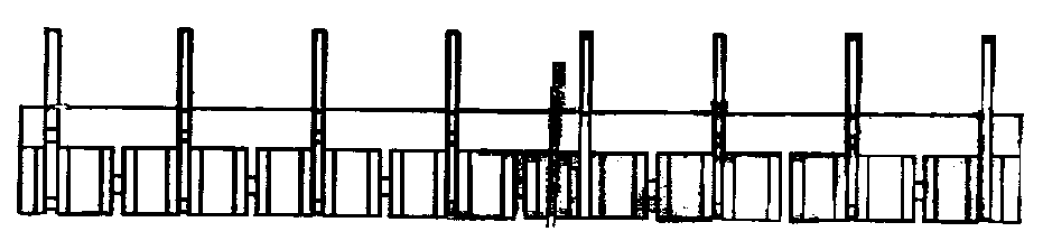


THIS DRAWING IS UNPUBLISHED. RELEASED FOR PUBLICATION
 © COPYRIGHT BY TYCO ELECTRONICS CORPORATION. ALL INTERNATIONAL RIGHTS RESERVED.

LOC	DIST	REVISIONS					
H	—	P	LTR	DESCRIPTION	DATE	DWN	APVD
			E1	ECR-08-014314	25-09-08	AEG	WRV
			E2	REVISED PER ECO-09-027197	08DEC09	KK	AEG



1 OBSOLETE PARTS: OBSOLETE CIS STREAMLINING PER D.RENAUD/D.SINISI



MATERIAL: HAIRLINE .PC. 90% GLASS FILLED
 CONTACT SURFACE
 PLATING: TIN-LEAD 93/7 OVER NICKEL BARRIER.

ORDER NUMBER	NUMBER OF POSITIONS	2" MAX.	
		M.M.	INCH.
164898-2	2	7.5	.295
3	3	12.5	.492
4	4	17.5	.689
5	5	22.5	.886
6	6	27.5	1.083
7	7	32.5	1.280
8	8	37.5	1.476
9	9	42.5	1.673
10	10	47.5	1.870
11	11	52.5	2.067
12	12	57.5	2.264
13	13	62.5	2.461
14	14	67.5	2.658
164898-5	15	72.5	2.854

OBSOLETE
 OBSOLETE
 OBSOLETE
 OBSOLETE
 OBSOLETE

SEE TABLE.	SEE ABOVE.	SEE ABOVE.
ORDER NO.	MATERIAL	PLATING

THIS DRAWING IS A CONTROLLED DOCUMENT.

DIMENSIONS: mm	TOLERANCES UNLESS OTHERWISE SPECIFIED:
	0 PLC ± -
	1 PLC ± -
	2 PLC ± -
	3 PLC ± -
	4 PLC ± -
	ANGLES ± -
MATERIAL	FINISH

DWN	28APR78	Tyco Electronics Corporation 's-Hertogenbosch, Nederland
CHK	—	
APVD	—	
PRODUCT SPEC	—	
APPLICATION SPEC	—	NAME 2_15 POS. MALE HEADER ASS'Y RIGHT ANGLED FOR MINI-MATCH INTERCONNECTION SYSTEM PITCH 5,0 mm.
WEIGHT	—	SIZE A3
CUSTOMER DRAWING		CAGE CODE 00779
		DRAWING NO C-164898
		RESTRICTED TO —
SCALE		SHEET 1 OF 1
		REV E2