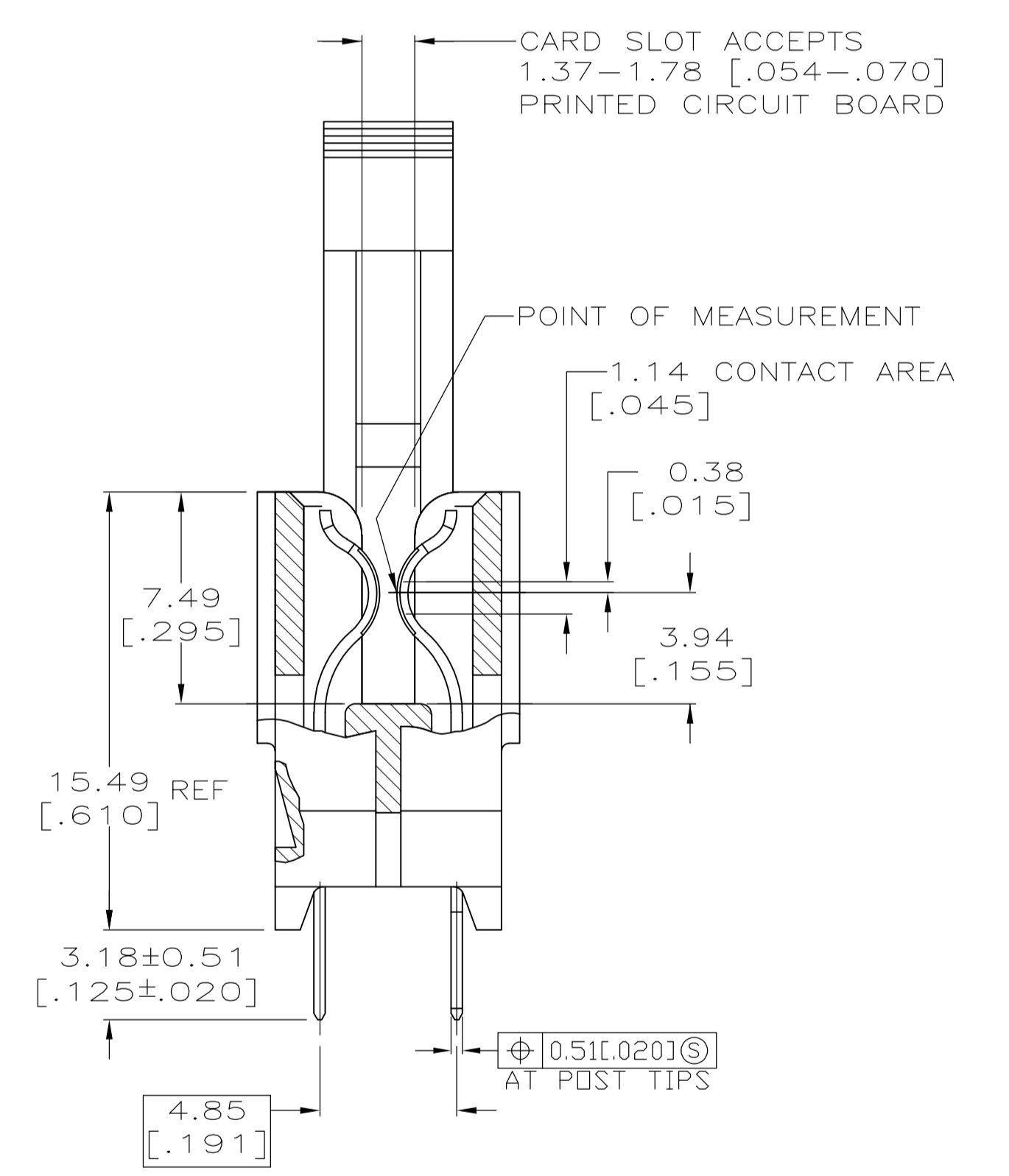


- MATERIAL:  
HOUSING: GLASS FILLED POLYESTER, COLOR: BLACK.  
CONTACT: HIGH CONDUCTIVITY COPPER ALLOY  
LATCH: GLASS FILLED POLYESTER, COLOR: BLACK
- FINISH:  
0.00038 [.000015] GOLD PLATE IN CONTACT AREA,  
0.00254 [.000100] MIN MATTE TIN ON SOLDER POSTS, ALL  
OVER 0.00127 [.000050] MIN NICKEL
- AMP LOGO, TE PART NUMBER, DATE CODE AND CSA LOGO INK STAMPED WHITE (HOT STAMPED OR LAZER PRINTED) IN THE APPROXIMATE AREA SHOWN, EITHER SIDE PERMISSABLE, WHEN HOUSING SIZE PERMITS
- DATUMS AND BASIC DIMENSIONS ESTABLISHED BY CUSTOMER
- CONNECTORS SHOWN ARE USED IN APPLICATIONS WITH VRM MODULES WEIGHING 3 OUNCES OR LESS. ALTERNATE CONNECTOR AND LATCH METHOD IS AVAILABLE FOR VRM MODULES WEIGHING UP TO 6 OUNCES.
- CAUTION: LATCHES ARE INTENDED FOR RETENTION OF PC BOARD TO CONNECTOR, DO NOT ATTEMPT TO FULLY EJECT PC BOARD FROM CONNECTOR WHILE DISENGAGING LATCHES. DAMAGE TO LATCHES AND OR CONNECTOR MAY OCCUR

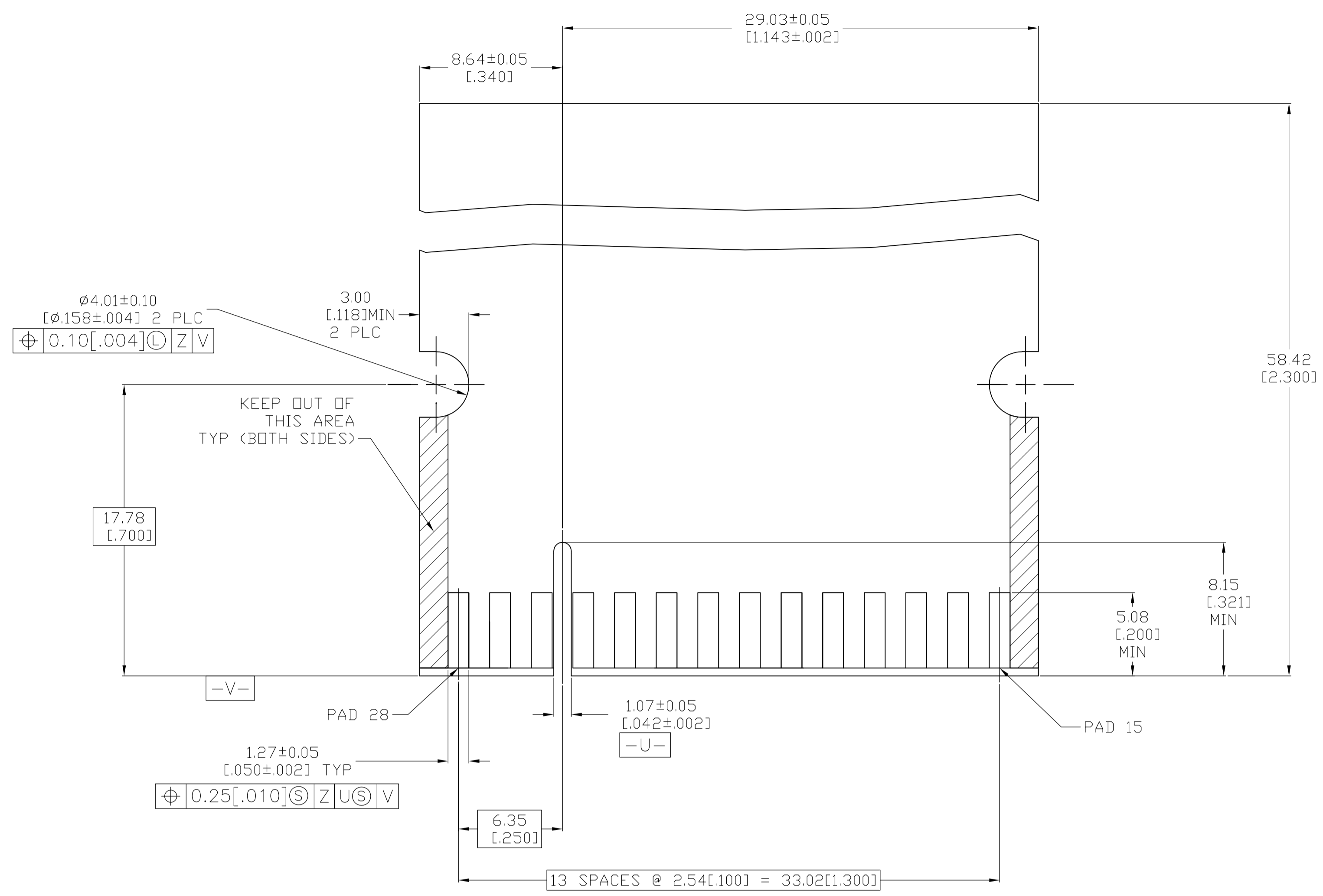


1	25,26	14	1658916-1
OMIT PIN AND HOLE	MOLDED KEY BETWEEN PINS	NO OF DUAL POSN	PART NUMBER

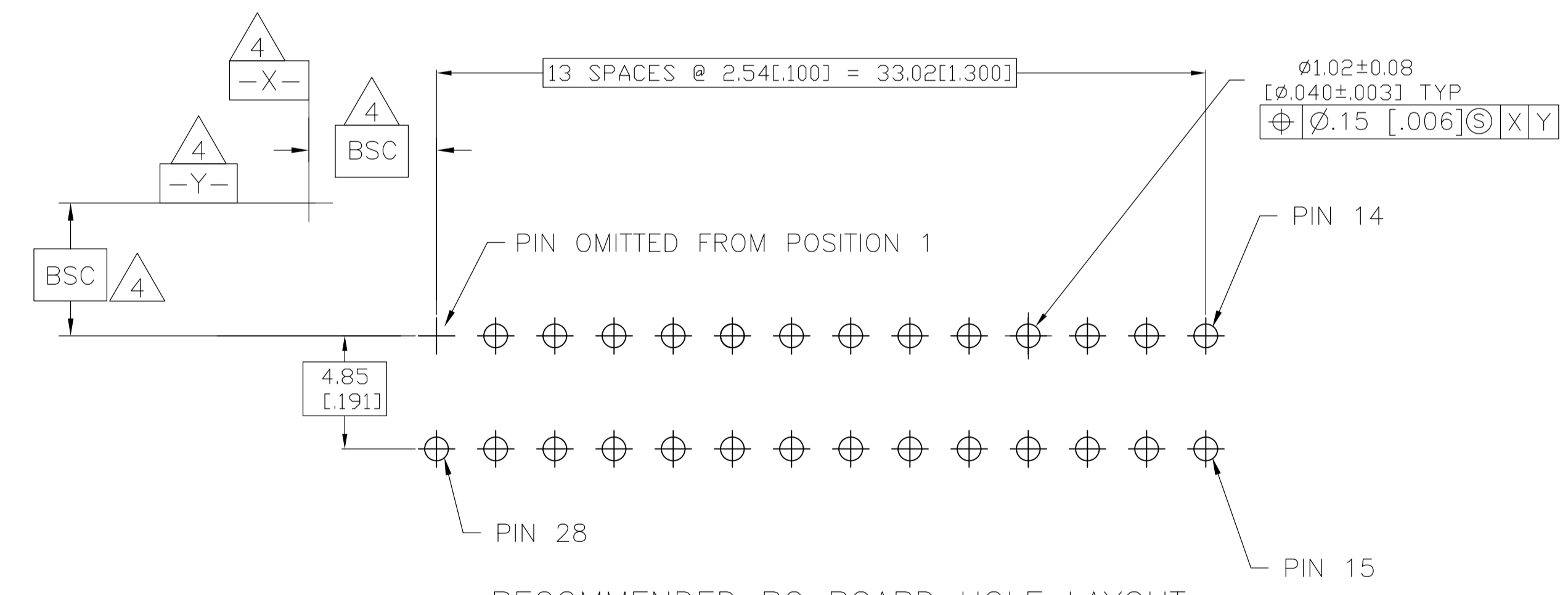
THIS DRAWING IS A CONTROLLED DOCUMENT.

DIMENSIONS: mm [INCHES]	TOLERANCES UNLESS OTHERWISE SPECIFIED: 0. PLC ± 1. PLC ± 0.3 [.010] 2. PLC ± 0.13 [.005] 3. PLC ± 4. PLC ± ANGLES ± α	DWN AWF/L.A.MAYER 02APR2008	AWF A.W.FRANTUM 02APR2008	NAME S.FLICKINGER	DATE 02APR2008	RESTRICTED TO
SEE NOTE 1	SEE NOTE 2	AWF	AWF	CONNECTOR ASSEMBLY, PRESS FIT HIGH CURRENT CARD EDGE, DUAL POSITION 2.54 [.100] CENTERLINE	SIZE A1	SCALE 5:1
		00779	1658916	114-13018	108-9039-1	SHEET 1 OF 2
		CUSTOMER DRAWING				REV E

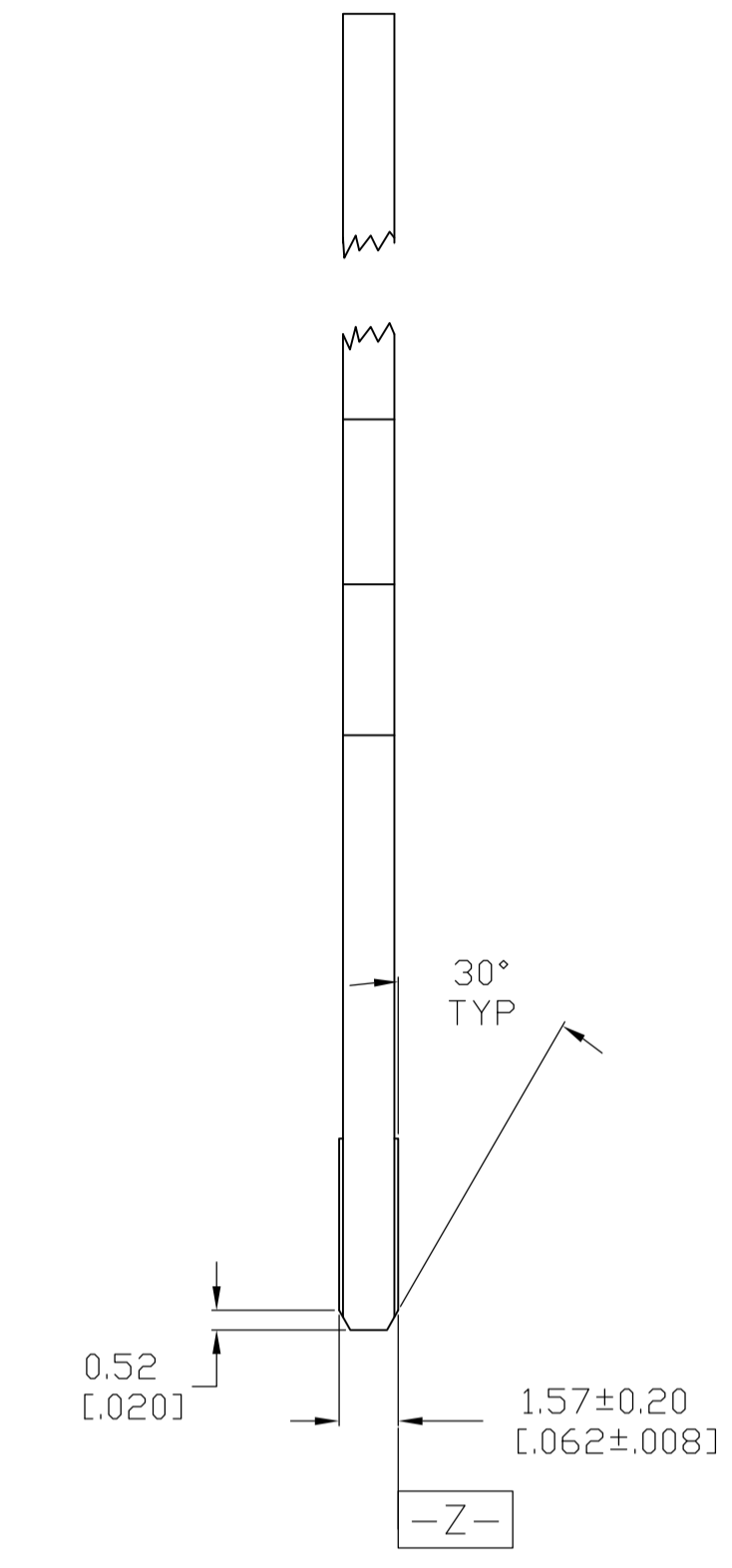
LOC	DIST	REVISIONS			
REV	BY	DESCRIPTION	DATE	DNW	APVD
AA	00	SEE SHEET 1			



RECOMMENDED MATING BOARD EDGE CONFIGURATION



RECOMMENDED PC BOARD HOLE LAYOUT



THIS DRAWING IS A CONTROLLED DOCUMENT.		DIN AWF/L.A.MAYER 02APR2008	Tyco Electronics Corporation	
DIMENSIONS: mm (INCHES)		CWK A.W.FRANTUM 02APR2008	Harrisburg, PA 17105-3608	
TOLERANCES UNLESS OTHERWISE SPECIFIED:		APVD S.FLICKINGER 02APR2008	NAME	
0 PLC ±		108-9039-1		
1 PLC ± 0.3 [.010]		PRODUCT SPEC		
2 PLC ± .13 [.005]		APPLICATION SPEC		
3 PLC ±		114-13018		
4 PLC ±		SIZE CAGE CODE DRAWING NO RESTRICTED TO		
ANGLES ±		A1 00779 C=1658916		
MATERIAL SEE NOTE 1		FINISH SEE NOTE 2		WEIGHT -
		CUSTOMER DRAWING		SCALE 5:1 SHEET 2 OF 2 REV E