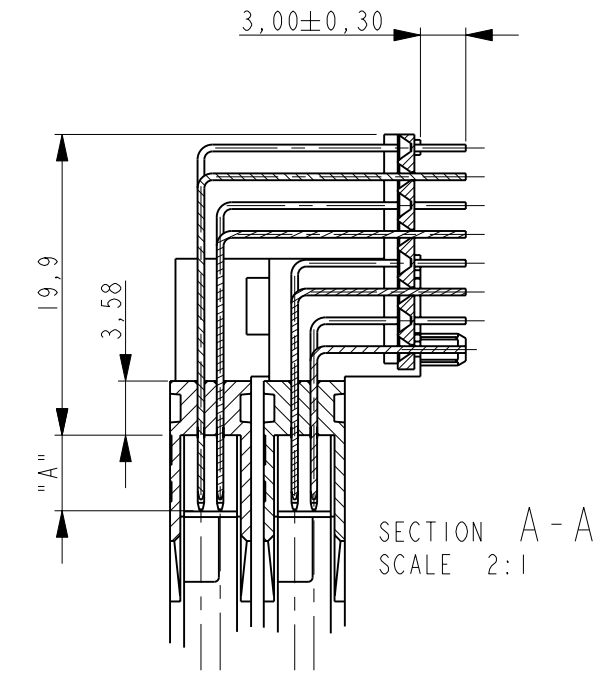
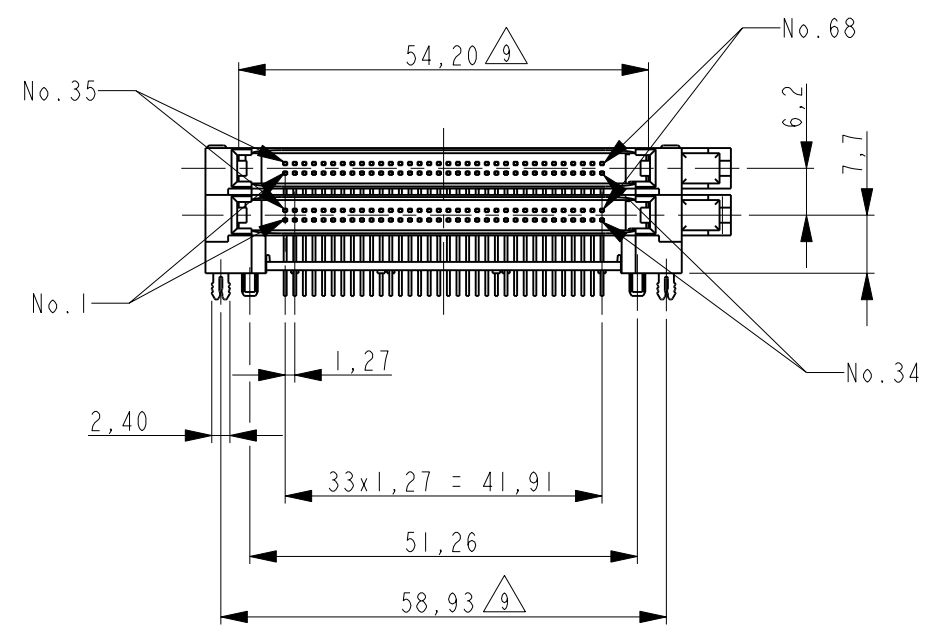
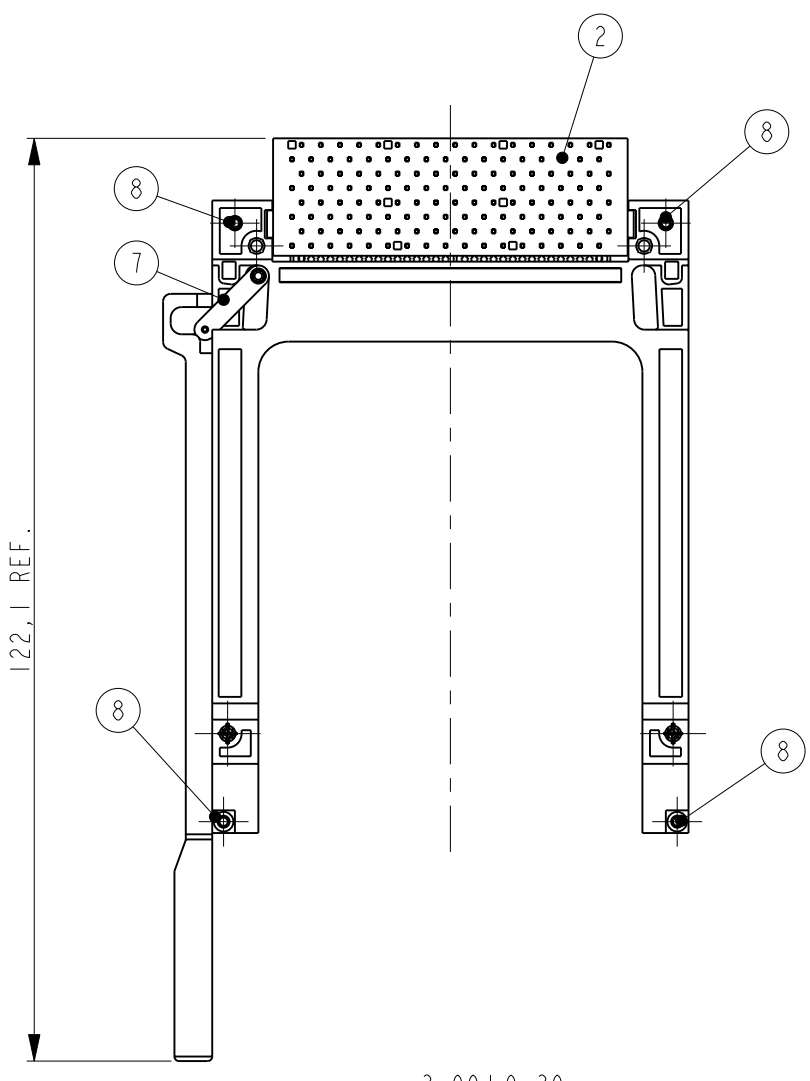
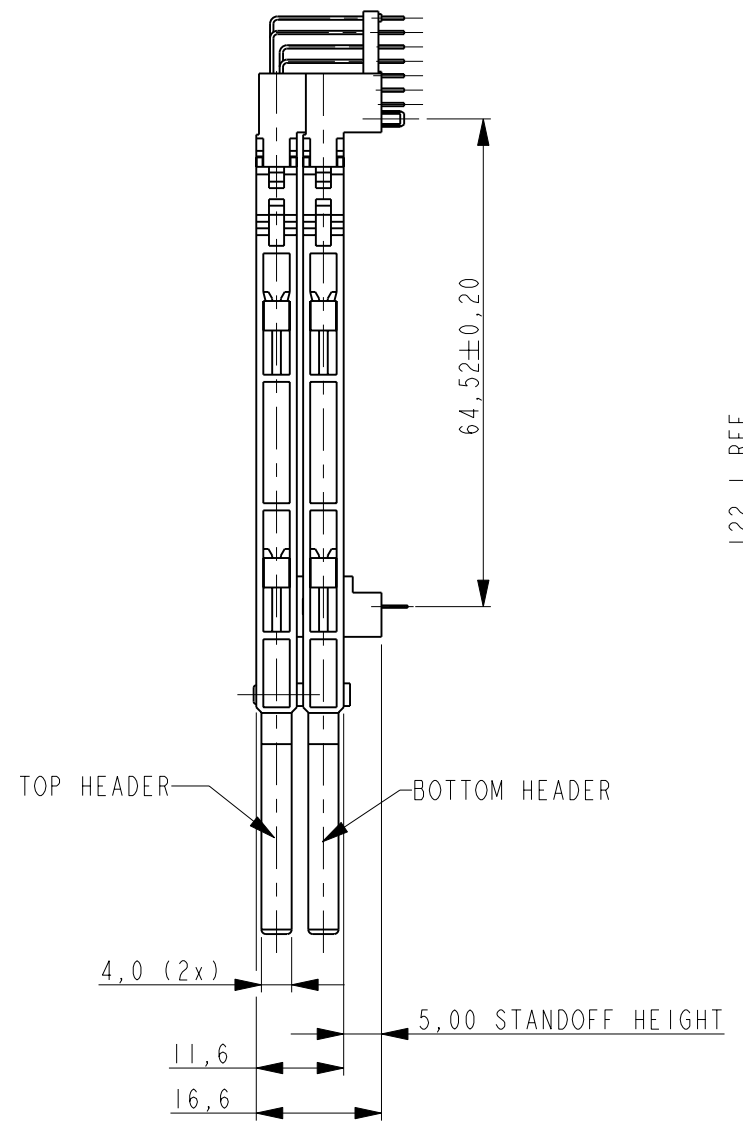
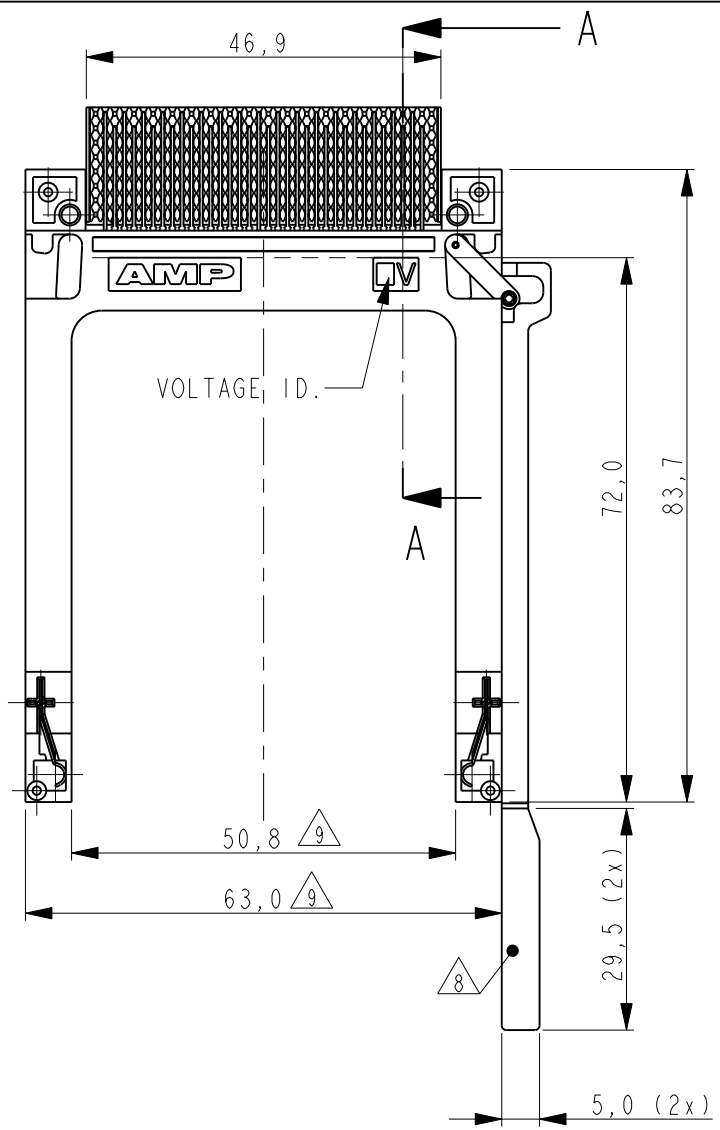


THIS DRAWING IS UNPUBLISHED. RELEASED FOR PUBLICATION  
 © COPYRIGHT - y ALL RIGHTS RESERVED.

LOC		DIST		REVISIONS			
P	LTR	DESCRIPTION	DATE	DWN	APVD		
	A2	ECR-11-010161	16MAY2011	GG	RRP		



NOTES/SPECIFICATION:

- TOP HEADER ACCEPTS TYPES I, II, & III AND BOTTOM HEADER ACCEPTS TYPES I & II, - OF PCMCIA STANDARD MEMORY CARD
- MECHANICAL SPECIFICATION:
  - DURABILITY
    - OFFICE ENVIRONMENT: 10000 CYCLES MINIMUM
    - HARSH ENVIRONMENT: 5000 CYCLES
  - CONTACT RETENTION FORCE: 1 kg MINIMUM
- ELECTRICAL SPECIFICATION:
  - CONTACT RESISTANCE: 40 MILLI OHMS MAX.
  - DIELECTRIC WITHSTANDING VOLTAGE: 500 Vrms FOR 1min.
  - INSULATION RESISTANCE: 1000 MEGA OHMS MIN.
  - CURRENT CAPACITY: 0,5 AMPS PER PIN.
- ENVIRONMENTAL SPECIFICATIONS:
  - STORAGE ENVIRONMENT: -40°C TO +70°C, 95% MAX. RELATIVE HUMIDITY (NON CONDENSING)
  - OPERATION TEMPERATURE: -20°C TO +60°C, 95% MAX. RELATIVE HUMIDITY (NON CONDENSING)
  - THERMAL SHOCK: 6 CYCLES (1 CYCLE PER HOUR) WITH CONNECTOR ENGAGED WITH EXTREMES OF -55°C TO +70°C.

5 LENGTH OF CONTACTS OF BOTH HEADERS:

DIM "A"	POSITION No.
5	1, 17, 34, 35, 51, 68
3.5	36, 67
4.25	THE OTHERS

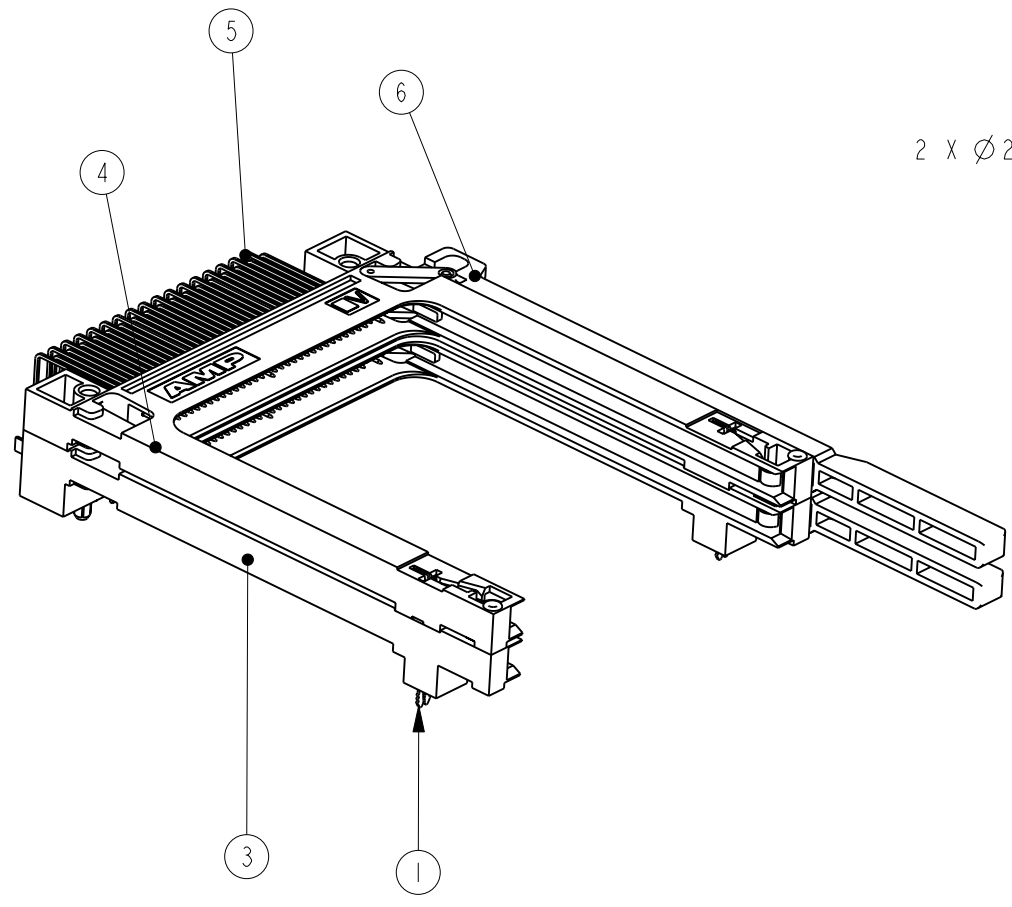
- PLATING OF CONTACT: Ni: 1,5µm MIN. (OVERALL)  
Au: 0,2µm MIN. (CARD SIDE)  
TIN: 2µm MIN. (PCB SIDE)
- ALL PARTS PACKAGED IN TRAYS UNLESS REQUESTED:
- EJECTOR TRAVEL LENGTH IS 6mm.
- MEASURING METHOD: MEASURE THESE DIMENSION, BY FIXING THE CONNECTOR TO THE STANDARD GAUGE.

CONNECTOR TO PRINTED CIRCUIT BOARD ASSEMBLY:

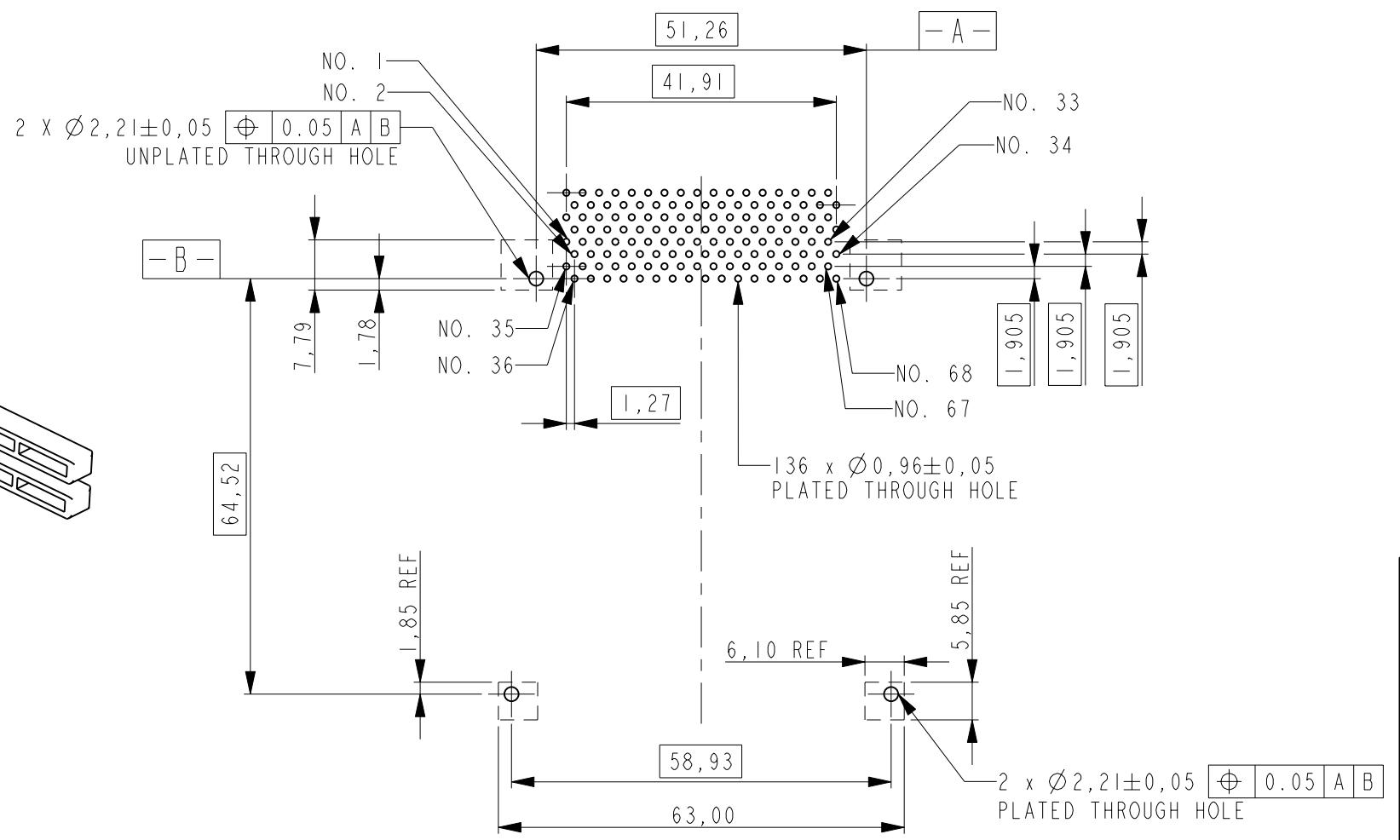
- PLACE THE CONNECTOR ON THE PRINTED CIRCUIT BOARD. THE SOLDER TAILS, RETENT CLIPS & PLASTIC LEGS SHOULD BE SEATED IN THE RESPECTIVE HOLES
- PUSH FIRMLY DOWN ON CENTER OF PLASTIC LEGS THEN SOLDER RETENTS. A SLIGHT SNAP IS FELT WHEN THE CONTACT IS FULLY SEATED.
- SOLDER PROCESS ENTIRE PRINTED CIRCUIT BOARD ASSEMBLY

VOLTAGE IDENTIFICATION	PARTNUMBER	HEADER TYPE
3.3V	1705349-2	3.3 VOLT PC-CARD HEADER
5.0V	1705349-1	5.0 VOLT PC-CARD HEADER

ITEM NO	QTY.	DESCRIPTION	MATERIAL	FINISH
8	4	RIVET	BRASS	
7	4	CAM	THERMOPLASTIC UL 94 VO	COLOR: BLACK
6	2	EJECTOR	THERMOPLASTIC UL 94 VO	COLOR: BLACK
5	136	CONTACT	COPPER ALLOY	6
4	2	HOUSING	THERMOPLASTIC UL 94 VO	COLOR: BLACK
3	1	ORGANISER	THERMOPLASTIC UL 94 VO	COLOR: BLACK
2	1	GROUND CONTACT	PHOSPHOR BRONZE	TIN: 2µm MIN.
1	1	GROUND CONTACT	PHOSPHOR BRONZE	TIN: 2µm MIN.



RECOMMENDED PCB LAYOUT (THICKNESS: 1,60mm ±0,1mm)



THIS DRAWING IS A CONTROLLED DOCUMENT. DWN: P.Willems 28-APR-05  
 CHK: R.vd.Sandt 28-APR-05  
 APVD: J.Broeksteeg 28-APR-05

STE TE Connectivity

NAME: STACKED PC-CARD HEADER 5mm WITH RIGHT EJECTORS

SIZE: A2 CAGE CODE: 00779 DRAWING NO: 1705349 RESTRICTED TO: -

SCALE: 1:1 SHEET: 1 OF 1 REV: A2

PRODUCT SPEC: 108-19201 APPLICATION SPEC: - WEIGHT: - CUSTOMER DRAWING