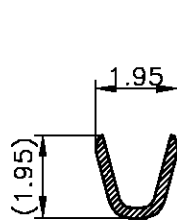
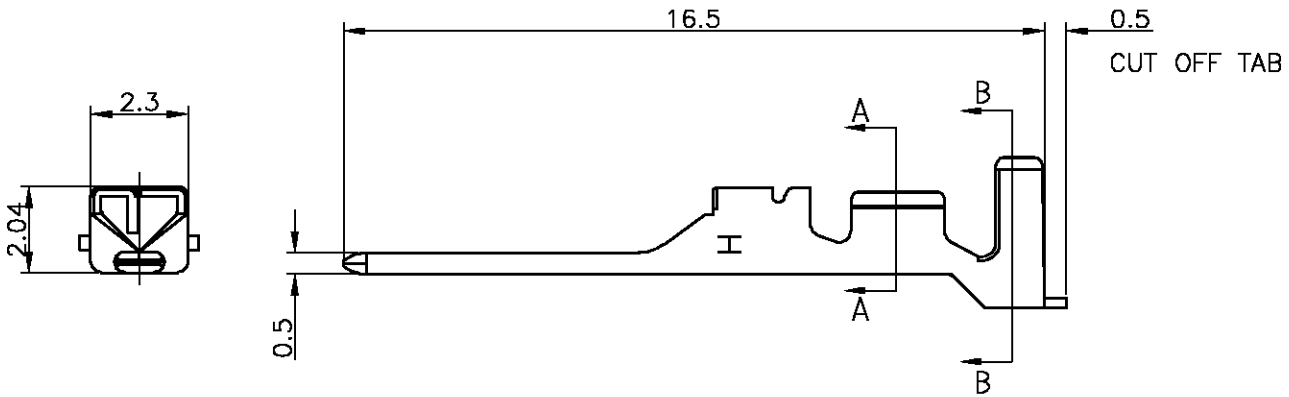
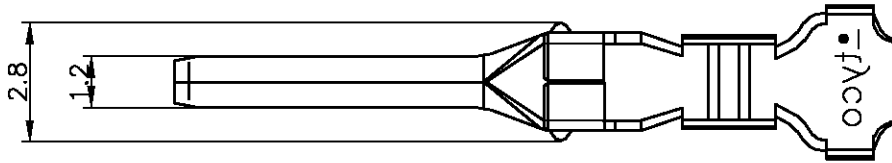
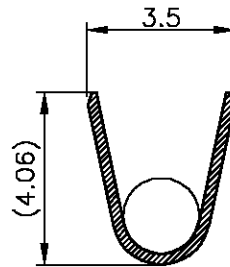


LOC J	DIST —	REVISIONS 変更					
		P	LTR	DESCRIPTION	DATE	DWN	APVD
			0	RELEASED	FJD0-0194-03	25JUN.'03	A.O M.S



SECT A-A



SECT B-B

注)

- 1.一般公差 : ± 0.25
- 2.材料 : 錫めっき済 銅合金

NOTES)

- 1.GENERAL TOLERANCE: ±0.25
- 2.MATERIAL:PRE-TIN COPPER ALLOY

1717408-1

PART NUMBER

WIRE RANGE  
包合電線断面積  
0.13-0.34mm<sup>2</sup> (AWG#22-26)

INSULATION DIA  
覆層外径  
ø1.3-2.0mm

DIMENSIONS: 単位: 特 MM	DWN A.OISHI 25JUN.'03
TOLERANCES UNLESS OTHERWISE SPECIFIED: 一般公差	CHK M.SHINDO 25JUN.'03
0 PLC ± -	APVD M.SHINDO 25JUN.'03
1 PLC ± -	PRODUCT SPEC 製品規格 108-5810
2 PLC ± -	APPLICATION SPEC 取付適用規格 114-5306
3 PLC ± -	WEIGHT —
4 PLC ± -	
ANGLES ± -	

MATERIAL 材料	SEE NOTE	FINISH 仕上	SEE NOTE
Tyco Electronics AMP K.K. Kawasaki, Japan			
NAME 名称 GRACE INERTIA CONNECTOR 3.5 TAB CONTACT(M) LOOSE PIECE			
SIZE	CAGE CODE	DRAWING NO 番号	RESTRICTED TO
A4	00779	C-1717408	—
CUSTOMER DRAWING		SCALE 尺度	SHEET 1 OF 1
		6:1	REV 0

THIS DRAWING IS UNPUBLISHED. BY TYCO ELECTRONICS CORPORATION. ALL RIGHTS RESERVED.