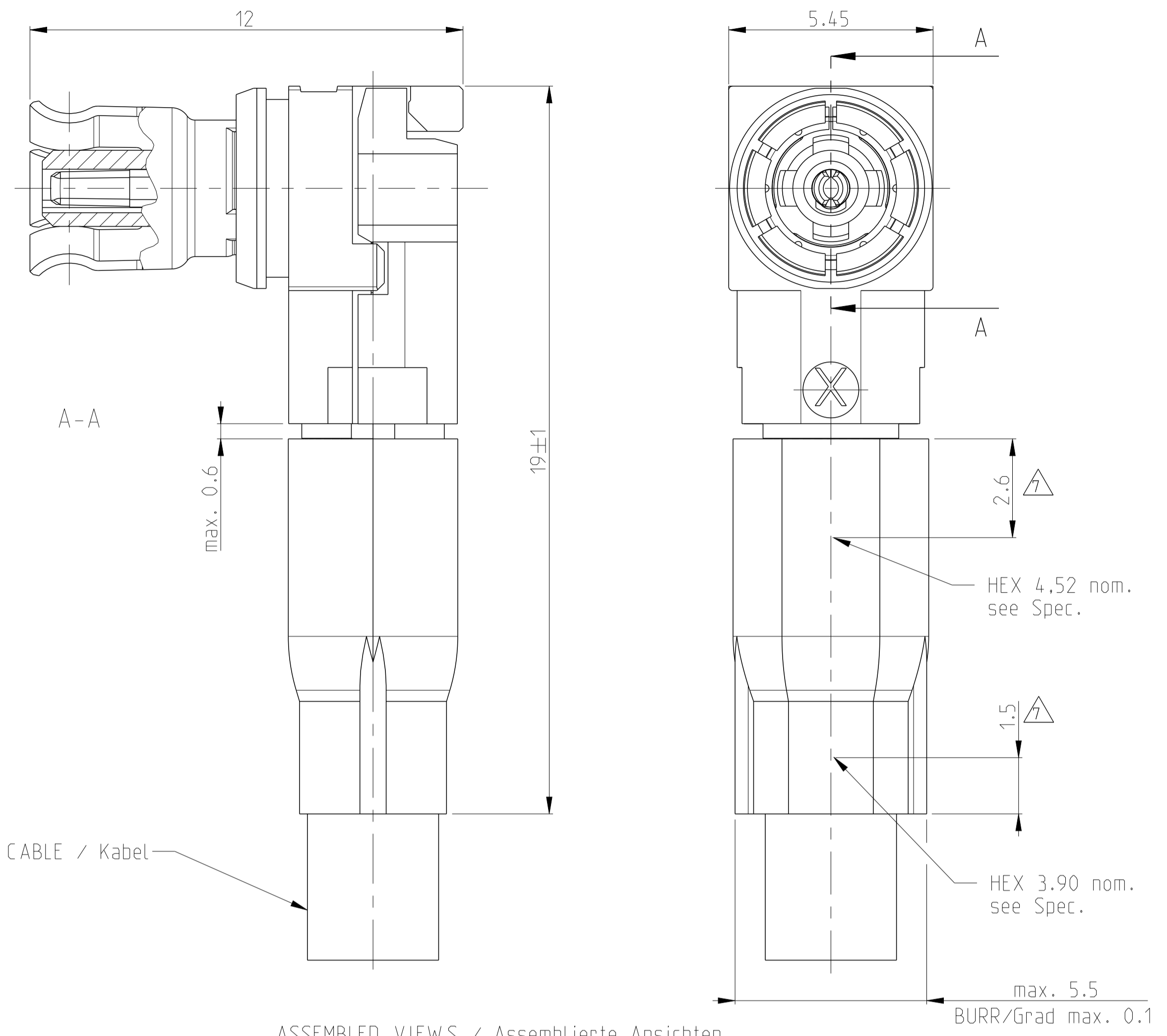
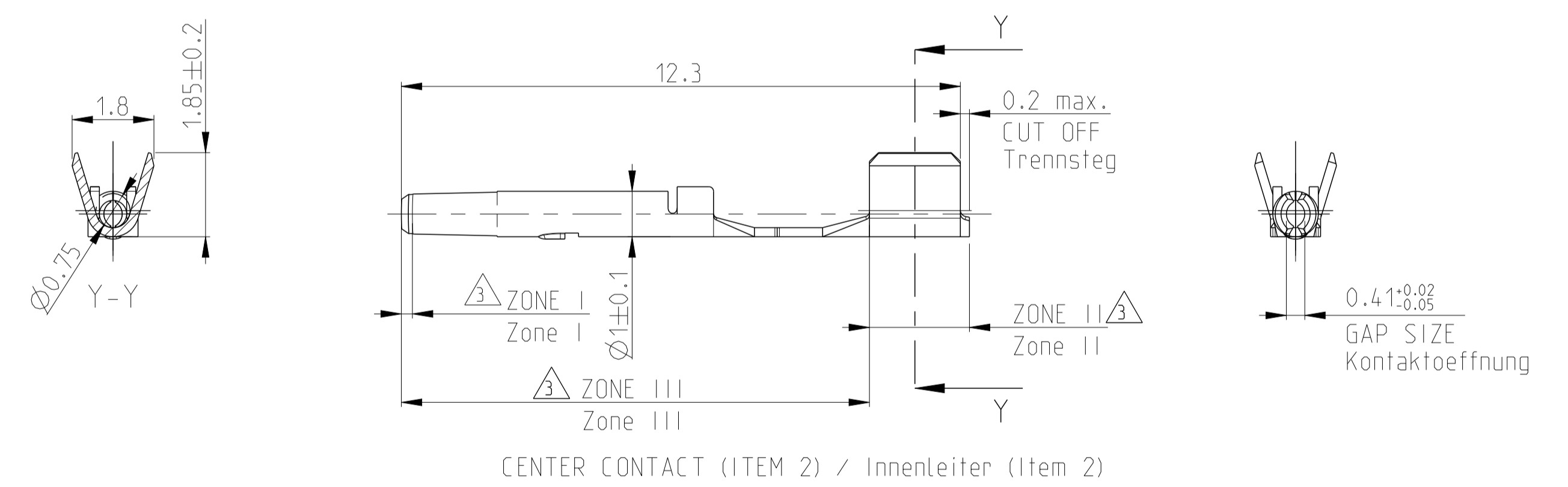


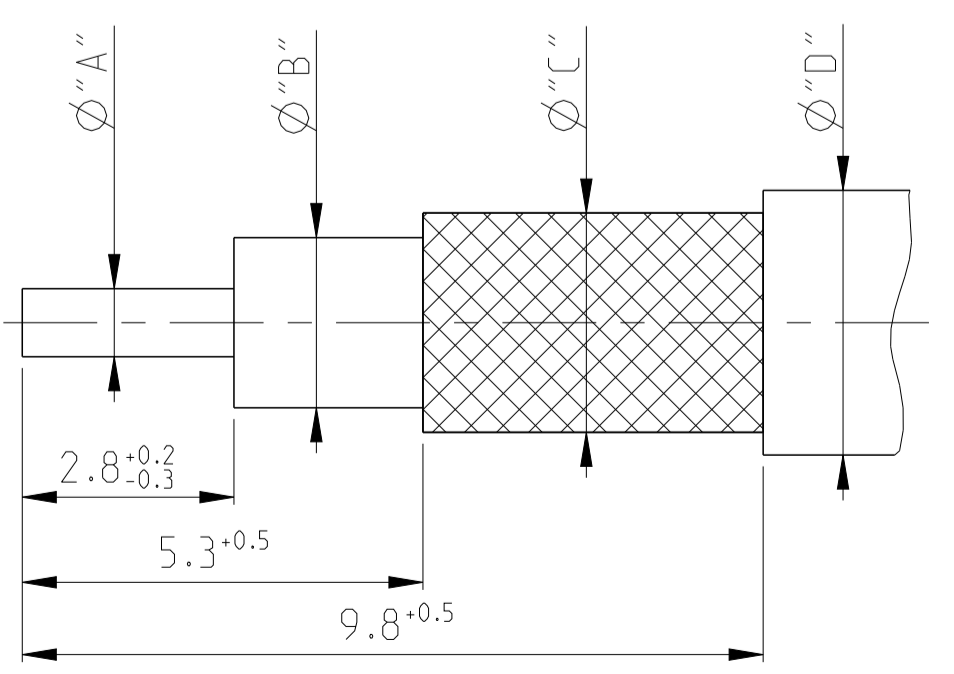
REVISIONS					
P.	LTN	DESCRIPTION	DATE	OWN	APVD
C3	ECR-07-021054		05SEP2007	ODC	WM
C4	ECR-07-023816		08OCT2007	ODC	WM
D	ECR-08-03123		21FEB2008	ODC	WM
D1	ECR-16-001568		02FEB2016	JB,JH	NR



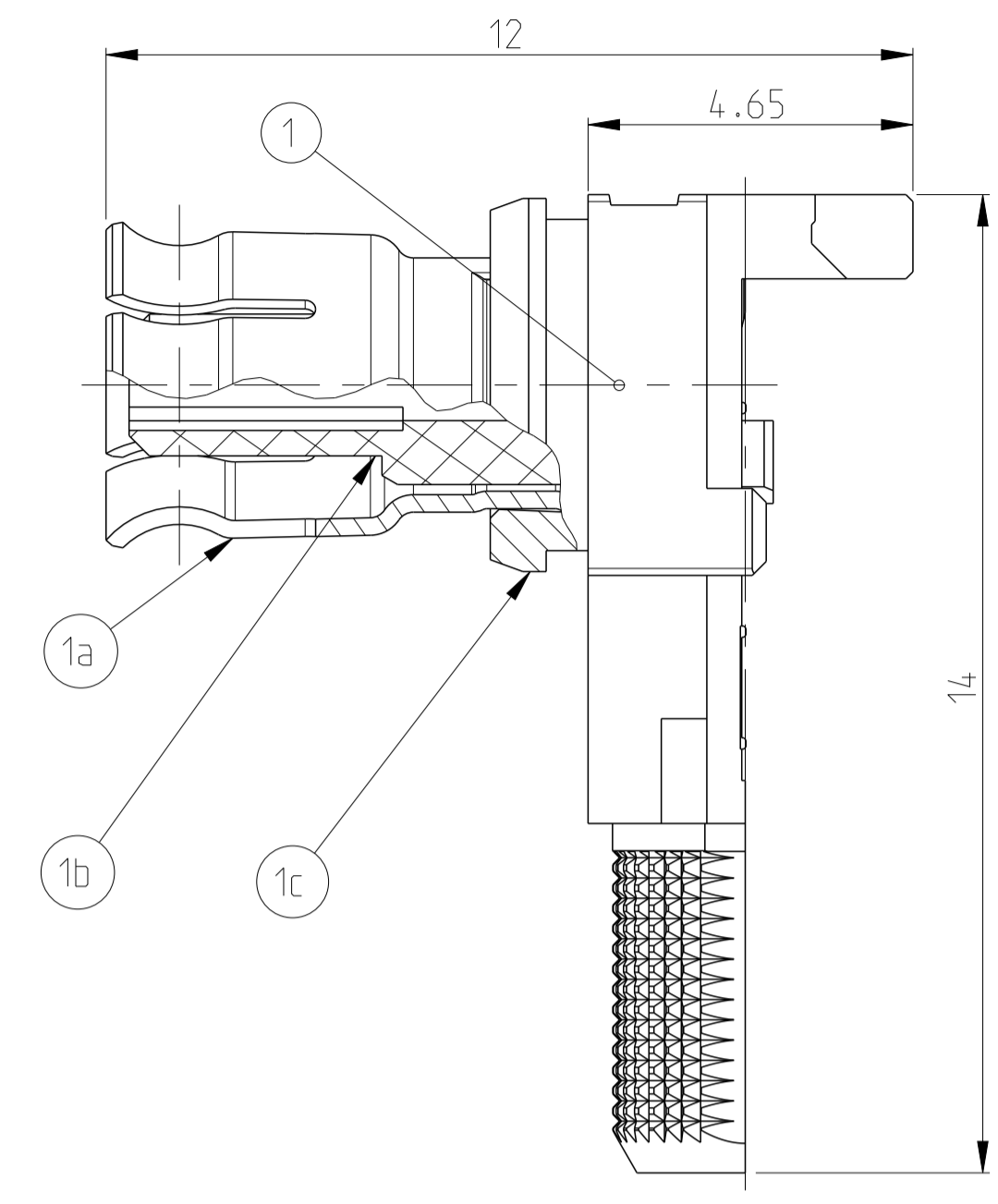
ASSEMBLED VIEWS / Assembled Views
Crimp tool No 0-1579021-4 (double step) or 1-1579021-6 (single step)



CABLE TYPES Kabeltypen	Ø "A"	Ø "B"	Ø "C"	Ø "D"
Low Loss (P/N 956163)	Ø0.9±0.05	Ø2.25±0.05	Ø2.90±0.1	Ø3.5±0.15
RTK031 (P/N 956339)	Ø0.8±0.05	Ø2.1±0.1	Ø2.6±0.1	Ø3.2±0.2



RECOMMENDED STRIP DIMENSIONS / Empfohlene Abisolierdimensionen
NOT TO SCALE / Nicht massstäblich



- 1 2-4 µm Ni
- 2 2-4 µm Sn OVER 1.25 µm MIN. Ni OVER 5.08 µm MIN. Cu
2-4 µm Sn ueber min. 1.25 µm Ni ueber min. 5.08 µm Cu
- 3 ZONE I: 0.8 µm MIN. Au OVER 1.3 µm MIN. Ni (FOR INSIDE GEOMETRY ONLY)
ZONE II: 2-4 µm Sn OVER 0.1 µm MIN. Ni
ZONE III: 0.1µm MIN. Ni
Zone I: min. 0.8 µm Au ueber min. 1.3 µm Ni (nur fuer Innengeometrie)
Zone II: 2-4 µm Sn ueber min. 0.1 µm Ni
Zone III: min. 0.1 µm Ni
- 4 PRETINNED (1-3 µm Sn)
Vorverzinnt (1-3 µm Sn)
- 5. THE CONNECTOR MUST FULFILL THE DIMENSIONAL REQUIREMENTS OF DIN 72594-1, RELEASED MARCH 2006. AND THE MECHANICAL AND ELECTRICAL REQUIREMENTS OF USCAR 17 REV. 2.
Der Kuppler muss die dimensionellen Anforderungen nach DIN 72594-1, Ausgabe Maerz 2006, und die elektrischen und mechanischen Anforderungen nach SAE/USCAR 17 rev. 2 erfullen.
- 6 COMPONENTS MUST BE PURCHASED SEPARATELY.
Komponenten sind separat zu bestellen.
- 7 CRIMP TO BE MEASURED AT THIS POINT SEE APPLICATION SPECIFICATION.
Crimp an diesem Punkt zu Messen Ausfuehrung siehe Verarbeitungsspezifikation.
- 8. CHARACTERS ON THE PARTS STAND FOR THE REVISION OF THAT COMPONENT, NOT OF THE SUBASSEMBLY OR ASSEMBLY.
Die Buchstaben auf den Teilen stehen fuer die Revision der entsprechende Komponente, nicht des Subassembly oder Assembly.

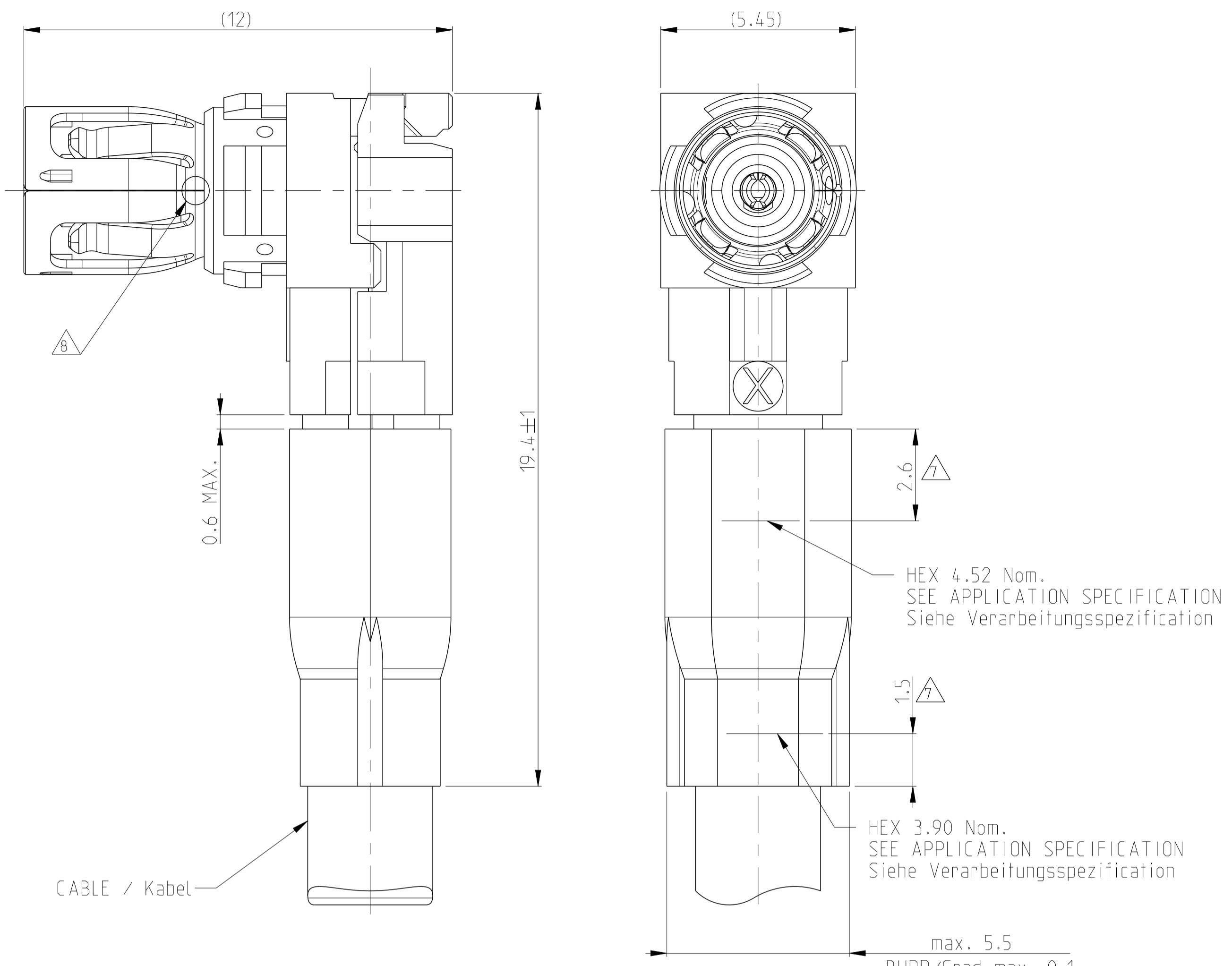
CONTACT KIT PART NUMBER	PART-NO. TO BE ORDERED	ITEM NO	DESCRIPTION	MATERIAL	PLATING
0-1418993-1 rev. A		4	FERRULE Crimphuelse	SfCu	1
0-1719245-1 rev. B		3	SUB ASSY REAR SHELL Unterbaugruppe Hinterschale	Zn-ALLOY Zn-Legierung	2
0-1418990-1 rev. C		2	CENTER CONTACT Innenleiterkontakt	CuNiSi	3
0-1418992-1 rev. C		1	SUB ASSY PLUG Unterbaugruppe Steck	1a. CuNiSi 1b. PEHD 1c. Zn-ALLOY Zn-Leg.	4 2

DIMENSIONS/2D ELEMENTS MARKED WITH (D) ARE SHOWING THE MODIFICATIONS TO DRAWING 1718080 REV C4.
DIE MIT (D) GEKENNZEICHNETEN MASSE/2D-ELEMENTE KENNZEICHNEN DIE AENDERUNG AN ZEICHNUNG 1718080 REV C4.

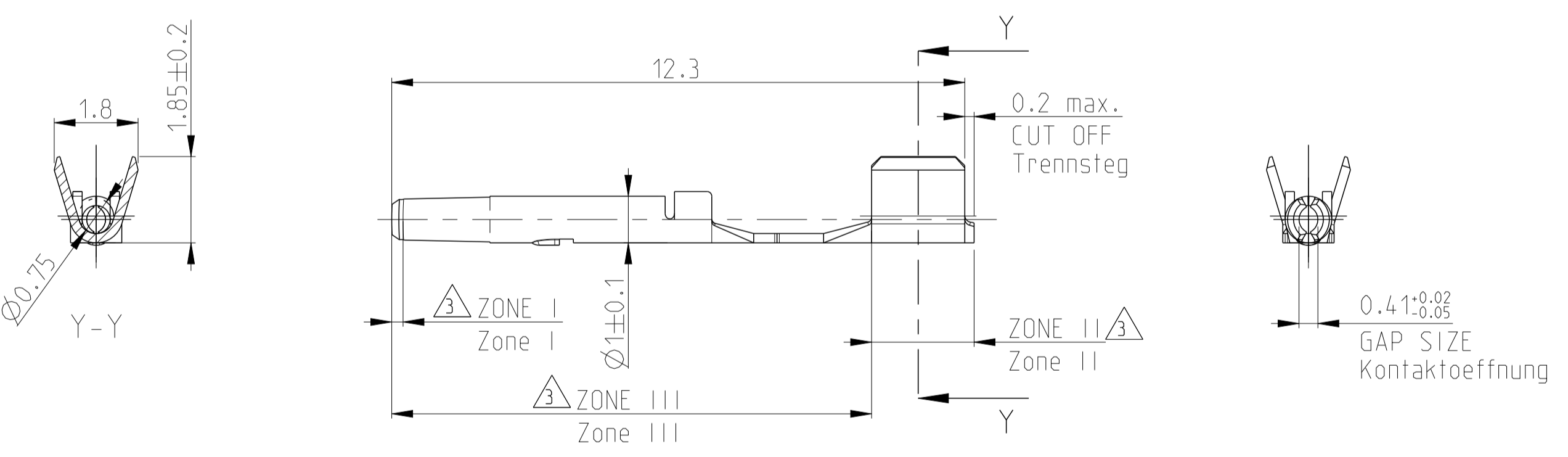
THIS DRAWING IS A CONTROLLED DOCUMENT.

DIMENSIONS:	TOLERANCES UNLESS OTHERWISE SPECIFIED:	OWN	21-Feb-08
mm	0 PLC ±0.5	CHK	21-Feb-08
	1 PLC ±0.2	APVD	
	2 PLC ±0.1	NAME	
	3 PLC ±	PRODUCT SPEC	
	4 PLC ±	APPLICATION SPEC	
	ANGLES ±	SIZE	
	FINISH ±	WEIGHT	
MATERIAL	SEE TABLE	CAGE CODE	DRAWING NO
SEE TABLE	siehe Tabelle	00779	1718080
		CUSTOMER DRAWING	SCALE 1:1 SHEET 1 OF 2 REV D1

STE TE Connectivity
Contact Kit, Plug, Unassembled
HF FAKRA 90 deg,
LOW LOSS CABLE AND RTK031

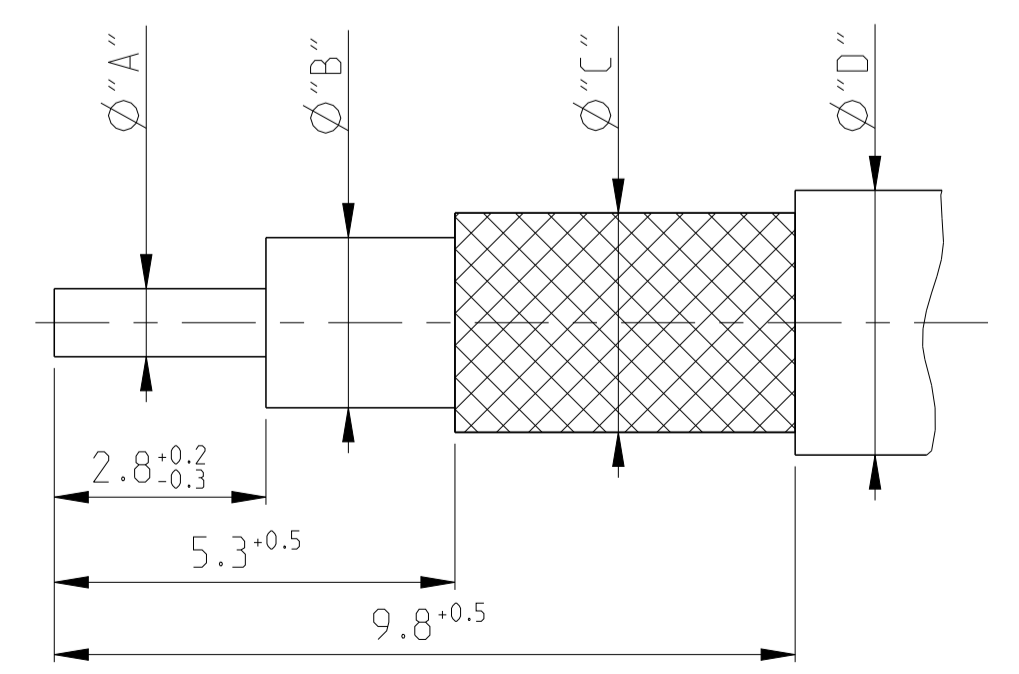


ASSEMBLED VIEWS / Assembled Views

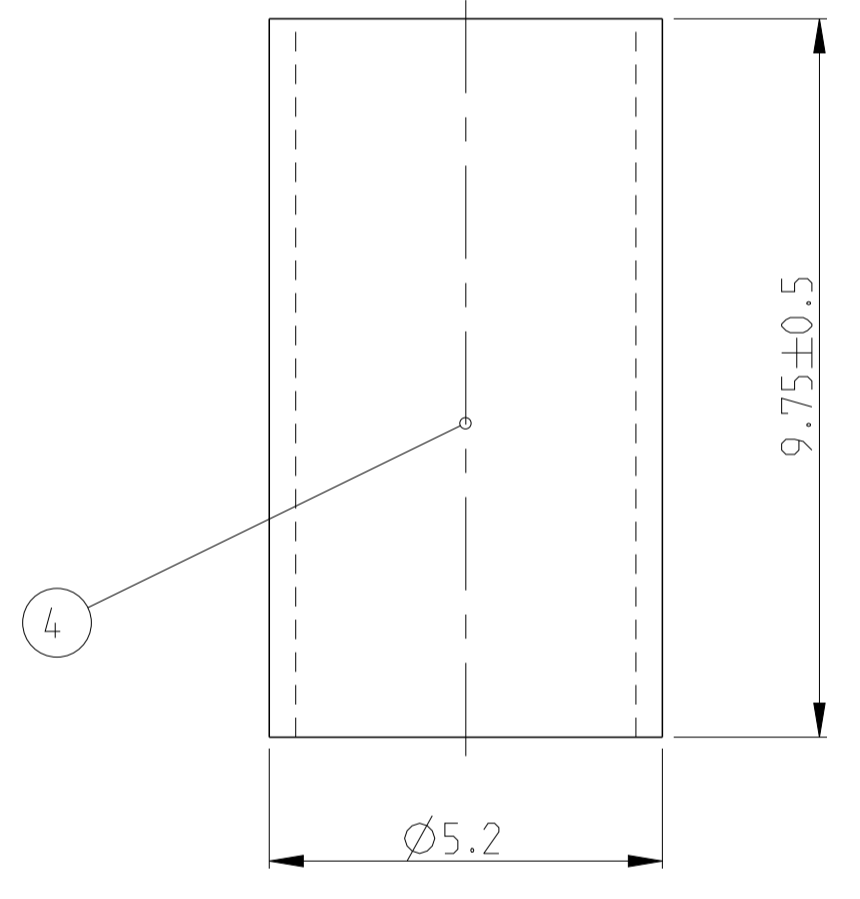
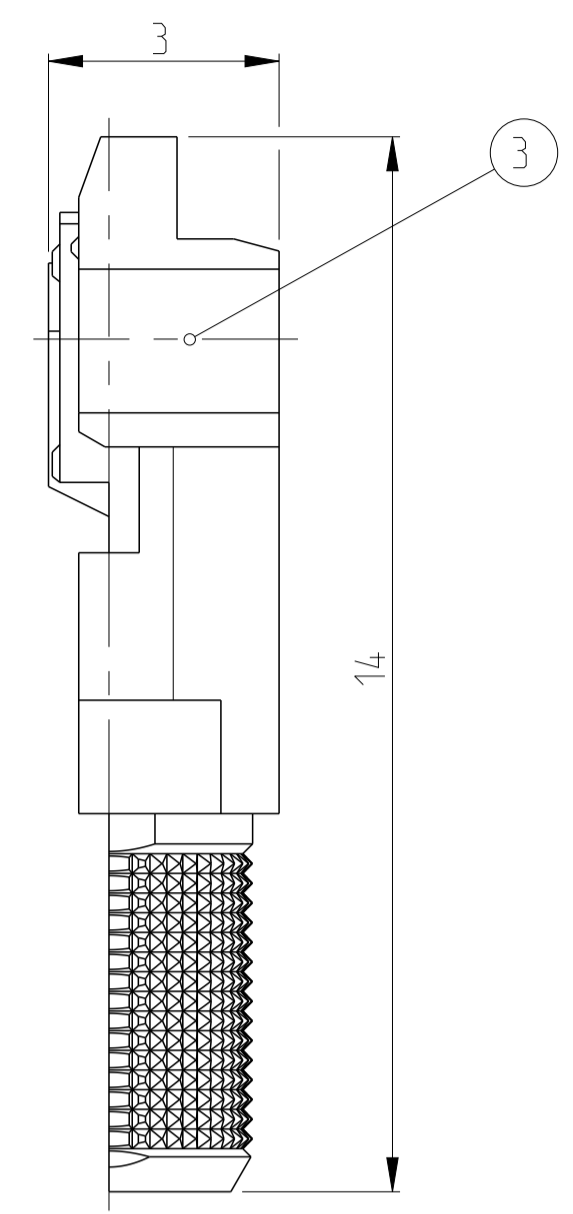
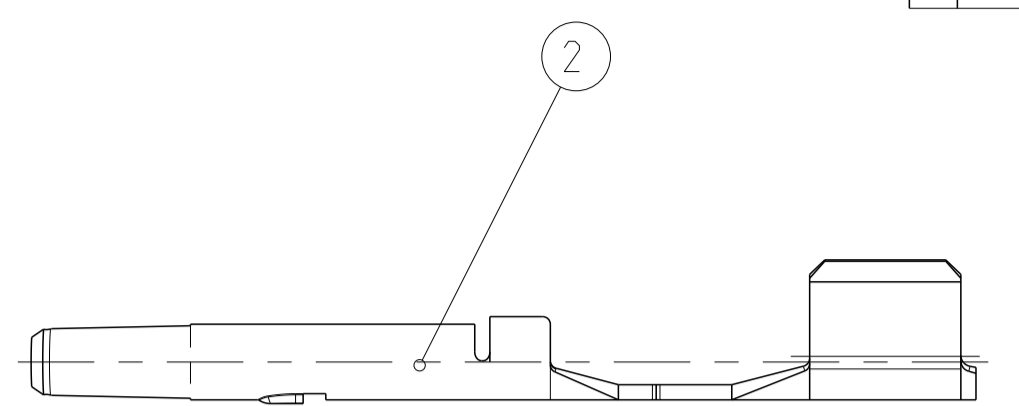
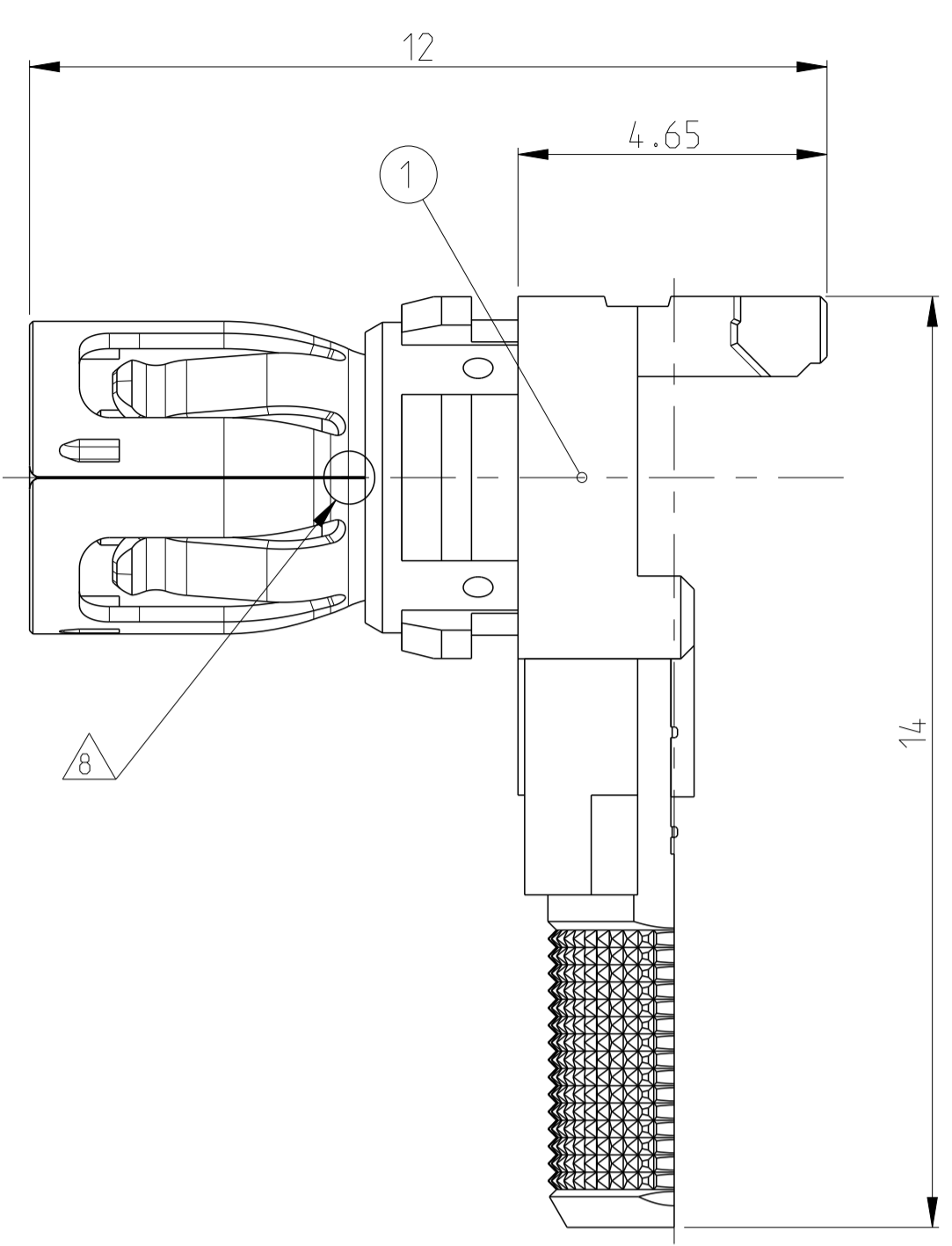


CENTER CONTACT (ITEM 2) / Innenleiter (Item 2)

CABLE TYPES Kabeltypen	Ø "A"	Ø "B"	Ø "C"	Ø "D"
Low Loss (P/N 956163)	Ø0.9±0.05	Ø2.25±0.05	Ø2.90±0.1	Ø3.5±0.15
RTK031 (P/N 956339)	Ø0.8±0.05	Ø2.1±0.1	Ø2.6±0.1	Ø3.2±0.2



RECOMMENDED STRIP DIMENSIONS / Empfohlene Abisolierdimensionen
NOT TO SCALE / Nicht massstäblich



- 1 2-4 µm Ni
- 2 2-4 µm Sn OVER 1.25 µm MIN. Ni OVER 5.08 µm MIN. Cu
2-4 µm Sn ueber min. 1.25 µm Ni ueber min. 5.08 µm Cu
- 3 ZONE I: 0.8 µm MIN. Au OVER 1.3 µm MIN. Ni (FOR INSIDE GEOMETRY ONLY)
ZONE II: 2-4 µm Sn OVER 0.1 µm MIN. Ni
ZONE III: 0.1µm MIN. Ni
Zone I: min. 0.8 µm Au ueber min. 1.3 µm Ni (nur fuer Innengeometrie)
Zone II: 2-4 µm Sn ueber min. 0.1 µm Ni
Zone III: min. 0.1 µm Ni
- 4 PRETINNED (1-3 µm Sn)
Vorverzinnt (1-3 µm Sn)
- 5. THE CONNECTOR MUST FULFILL THE DIMENSIONAL REQUIREMENTS OF DIN 72594-1. RELEASED MARCH 2006. AND THE MECHANICAL AND ELECTRICAL REQUIREMENTS OF USCAR 17 REV. 2. Der Kuppler muss die dimensionellen Anforderungen nach DIN 72594-1, Ausgabe Maerz 2006. und die elektrischen und mechanischen Anforderungen nach SAE/USCAR 17 rev. 2 erfullen.
- 6 COMPONENTS MUST BE PURCHASED SEPARATELY. Komponenten sind separat zu bestellen.
- 7 CRIMP TO BE MEASURED AT THIS POINT SEE APPLICATION SPECIFICATION. Crimp an diesem Punkt zu Messen Ausfuehrung siehe Verarbeitungsspezifikation.
- 8 WELDING POINT. Schweißpunkt.
- 9. CHARACTERS ON THE PARTS STAND FOR THE REVISION OF THAT COMPONENT. NOT OF THE SUBASSEMBLY OR ASSEMBLY. Die Buchstaben auf den Teilen stehen fuer die Revision der entsprechende Komponente. nicht des Subassembly oder Assembly.

REVISIONS				
P.	LTN	DESCRIPTION	DATE	APVD
-	SEE SHEET 1			

CONTACT KIT PART NUMBER	PART NO. TO BE ORDERED	ITEM NO	DESCRIPTION	MATERIAL	PLATING
0-1418993-1 rev. A		4	FERRULE Crimphuelse	SfCu	1
0-1719245-1 rev. B		3	SUB ASSY REAR SHELL Unterbaugruppe Hinterschale	3a. PBT 3b. Zn-ALLOY Zn-Leg.	2
0-1418990-1 rev. C		2	CENTER CONTACT Innenleiterkontakt	CuNiSi	3
0-1719249-1 rev. C		1	SUB ASSY PLUG Unterbaugruppe Steck	1a. CuNiSi 1b. PEHD 1c. Zn-ALLOY Zn-Leg.	4 2

DIMENSIONS/2D ELEMENTS MARKED WITH (D) ARE SHOWING THE MODIFICATIONS TO DRAWING 1718080 REV C4.
DIE MIT (D) GEKENNZEICHNETEN MASSE/2D-ELEMENTE KENNZEICHEN DIE AENDERUNG AN ZEICHNUNG 1718080 REV C4.

THIS DRAWING IS A CONTROLLED DOCUMENT.		OWN: 0. De Cloet 21-Feb-08	TE Connectivity	
DIMENSIONS: mm		CHK: 0. De Cloet 21-Feb-08	NAME: Contact Kit, Plug, Unassembled HF FAKRA 90 deg, LOW LOSS CABLE AND RTK031	
TOLERANCES UNLESS OTHERWISE SPECIFIED:		APVD: -	PRODUCT SPEC: -	
0 PLC ±0.5		APPLICATION SPEC: -	SIZE: A1	
1 PLC ±0.2		WEIGHT: -	CAGE CODE: 00779	
2 PLC ±0.1		CUSTOMER DRAWING: -	DRAWING NO: 1718080	
3 PLC ±		SCALE: 1:1	SHEET 2 OF 2	
4 PLC ±		REV: 01		
ANGLES: ±				
FINISH: #1*				