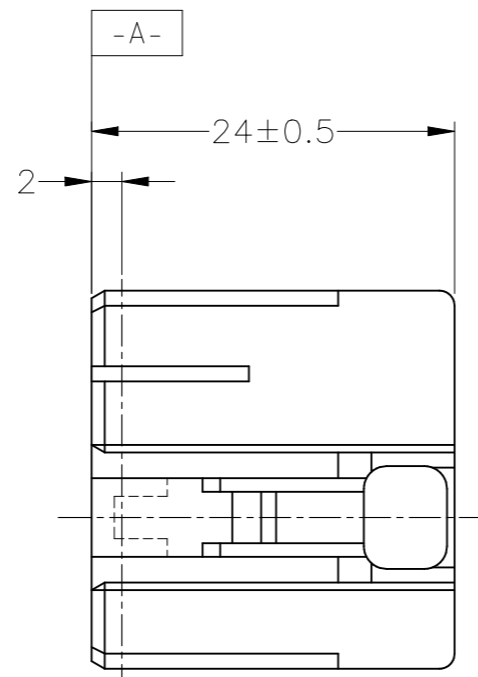
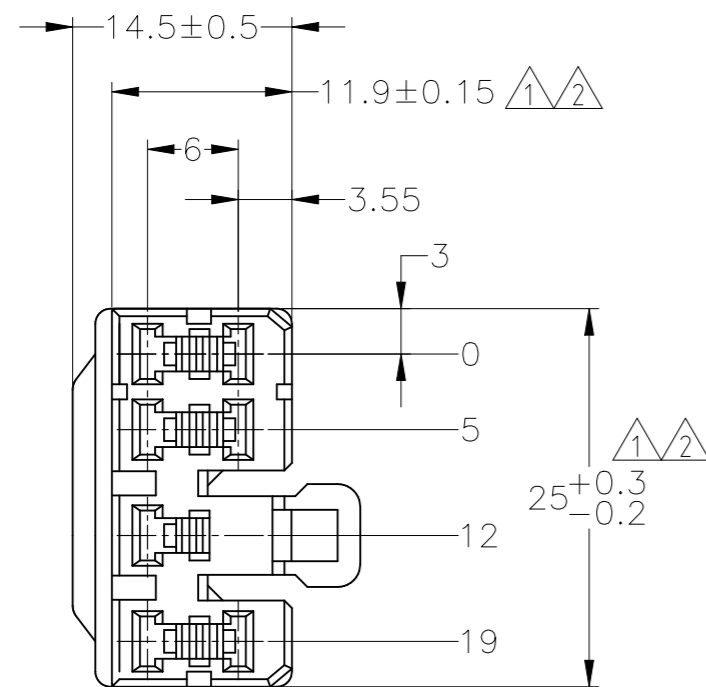


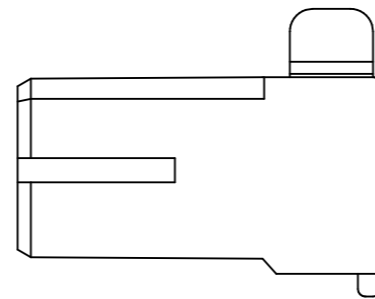
REVISIONS

P	LTR	DESCRIPTION	DATE	DWN	APVD
	R1	ECR-22-153250	14OCT2022	RK	MT



- ① TO BE MEASURED BETWEEN [-A-] AND 2mm
- ② TO BE MATES WITH PLUG HOUSING SMOOTHLY.
- 3. APPLICABLE CONTACT NO. 172773, 172775, ETC.
- 4. PRODUCT SPEC NO.: 108-5165, 108-5166
- 5. IN COUPLING WITH PLUG HOUSING 29.4N (3kg) MAX. WITHOUT RECEPTACLE CONTACT.

- ① [-A-] 面より2mmの範囲で測定
- ② 相手ハウジングと所定の機能を満たして嵌合できること。
- 3. 内装するリセプタクルコンタクトは型番172773, 172775 他。
- 4. 製品規格：108-5165, 108-5166
- 5. 相手ハウジングとの嵌合力は29.4N (3kg) 以下。但しリセプタクルコンタクトは含まない。



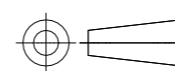
	YELLOW	172495-7
	GRAY	172495-6
OBSOLETE	BLUE	172495-5
OBSOLETE	GREEN	172495-4
OBSOLETE	BROWN	172495-3
	BLACK	172495-2
	NATURAL	172495-1
	COLOR	PART NUMBER

TOLERANCE UNLESS OTHERWISE SPECIFIED:  
一般公差

0 < x ≤ 10	: ±0.2
10 < x ≤ 30	: ±0.25
30 < x ≤ 100	: ±0.3
ANGLE ; 角度	: ±3°

THIS DRAWING IS A CONTROLLED DOCUMENT.

DIMENSIONS: mm



MATERIAL NYLON

TOLERANCES UNLESS OTHERWISE SPECIFIED:

0 PLC	± -
1 PLC	± -
2 PLC	± -
3 PLC	± -
4 PLC	± -
ANGLES	± -
FINISH	-

DWN T.SHINOHARA 08JAN2016

CHK K.BETSUI 08JAN2016

APVD K.BETSUI 08JAN2016

PRODUCT SPEC

SEE NOTE

APPLICATION SPEC

WEIGHT -

CUSTOMER DRAWING

NAME MULTI INTER LOCK CONNECTOR MK-II 7POSITION PLUG HOUSING

SIZE A3 CAGE CODE 00779 DRAWING NO. C-172495 RESTRICTED TO -

SCALE 2:1 SHEET 1 OF 1 REV R1

