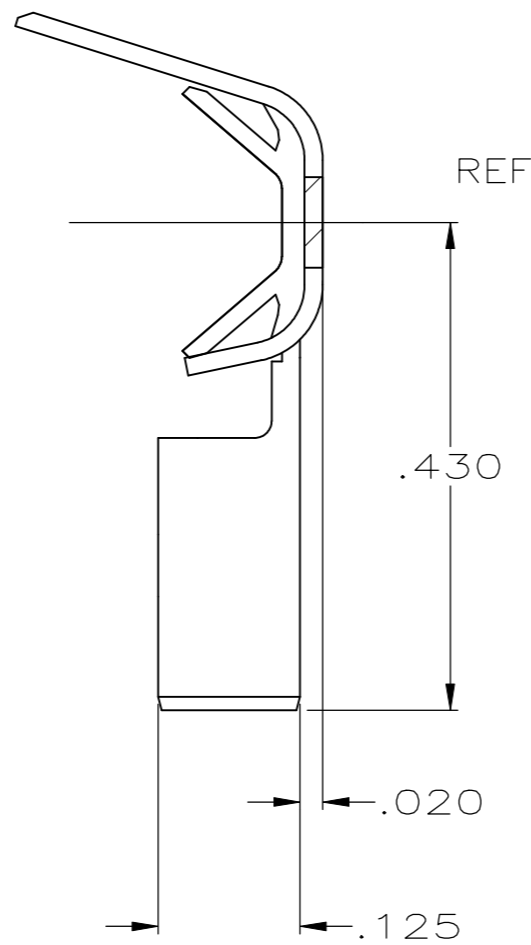
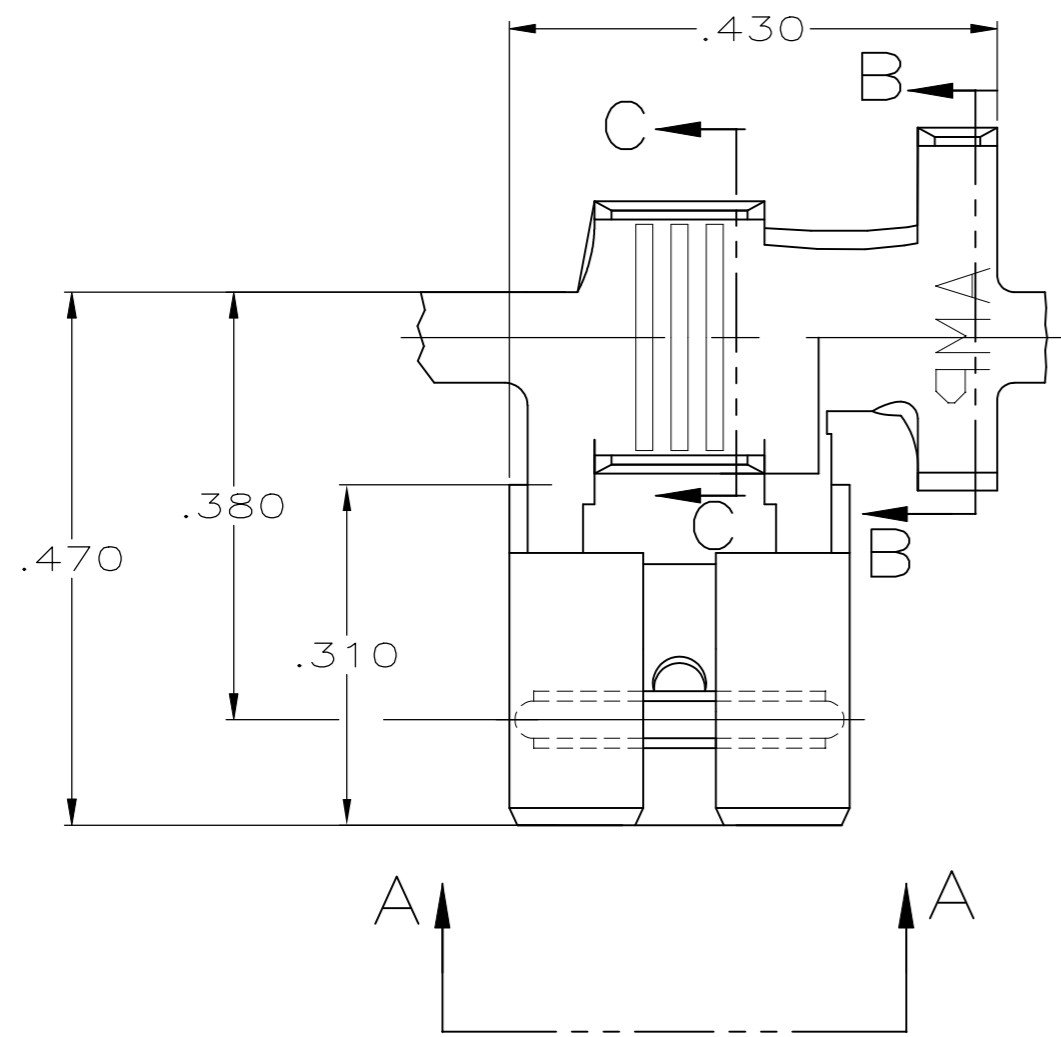
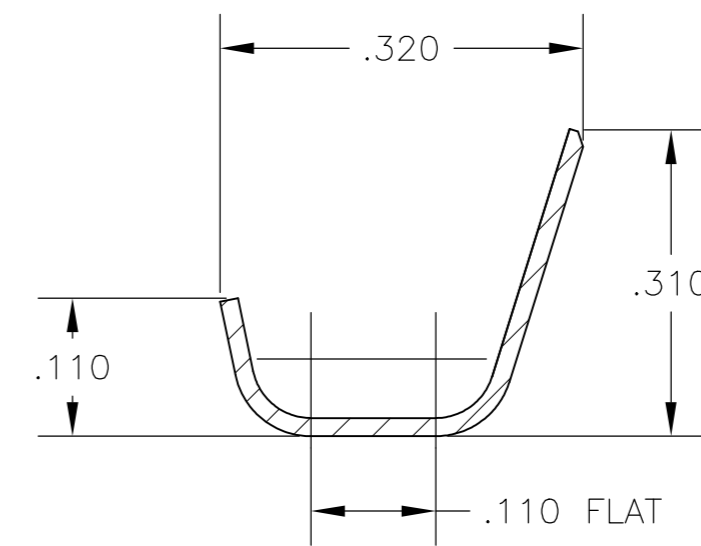


THIS DRAWING IS UNPUBLISHED. RELEASED FOR PUBLICATION
 © COPYRIGHT - By - ALL RIGHTS RESERVED.

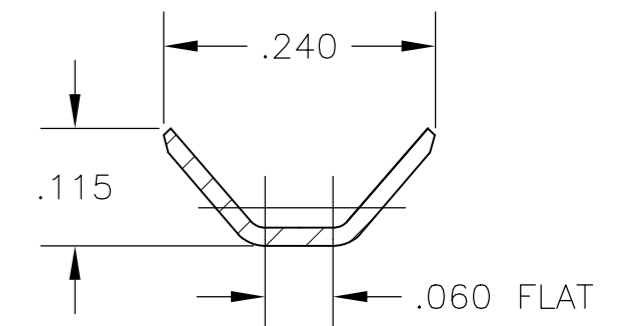
REVISIONS					
P	LTR	DESCRIPTION	DATE	DWN	APVD
	A4	REVISED PER ECR-18-005264	13APR2018	BW	DL



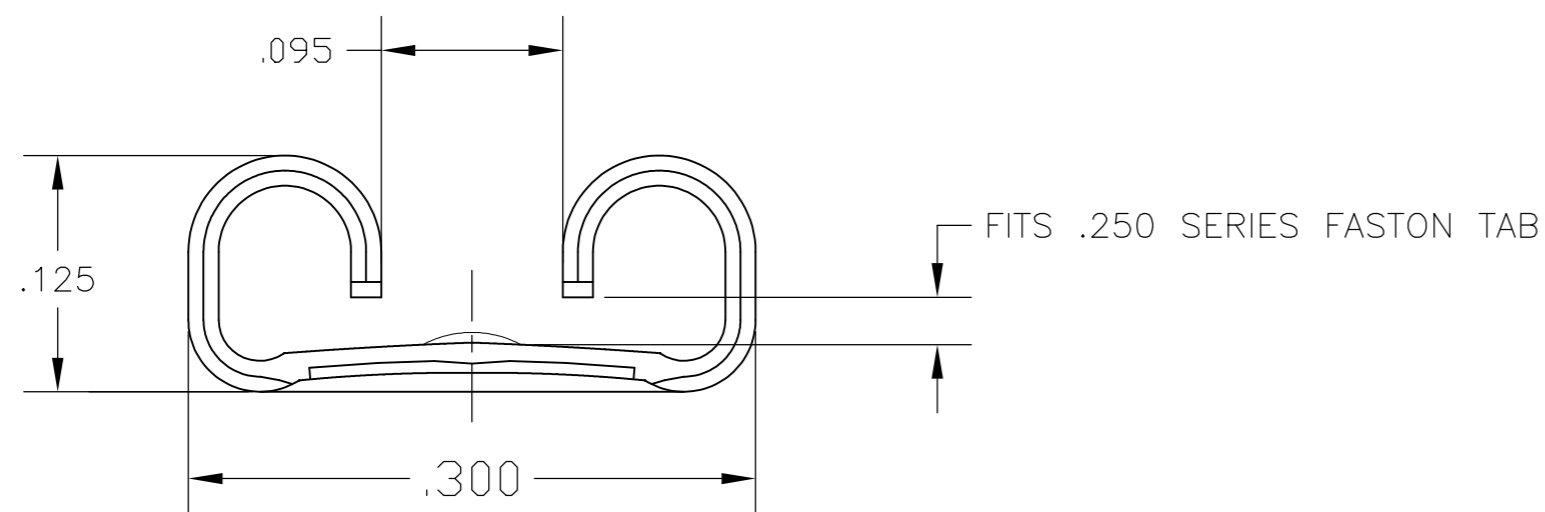
- 1 CONTINUOUS STRIP ON REELS.
- 2 CRIMPING INFO:
WIRE BBL-.110 WIDTH,F TYPE
INSUL BBL-.220 WIDTH,O TYPE
- 3 WIRE SIZE TO BE #18-#14 OR TWO #20'S, OR TWO #18'S
- 4 INSULATION RANGE IS .110-.160 OR TWO .105 MAX.
- 5 REREELING FOR 1742109-2



SECTION B-B
ROTATED 90° CW



SECTION C-C
ROTATED 90° CW



VIEW A-A
SCALE 10:1

OBSELETE	TIN $\triangle 5$	BRASS	1742109-3
	TIN	BRASS	1742109-2
	-	BRASS	1742109-1
	FINISH	MATERIAL	PART NO

THIS DRAWING IS A CONTROLLED DOCUMENT.		DWN JASON JIANG 31MAY16	STE TE Connectivity Ltd.	
		CHK TIM DING 31MAY16		
DIMENSIONS: INCHES		APVD TIM DING 31MAR16	NAME	
TOLERANCES UNLESS OTHERWISE SPECIFIED:		PRODUCT SPEC		RECEPTACLE, MINI FASTON, FLAG, .250 SERIES
0 PLC ± -		108-5006		
1 PLC ± -		APPLICATION SPEC		SIZE CAGE CODE DRAWING NO RESTRICTED TO
2 PLC ± -		114-2079		
3 PLC ± .015		WEIGHT		A2 00779 C=1742109
4 PLC ± -		CUSTOMER DRAWING		
ANGLES ± -		SCALE 6:1		SHEET 1 of 1 REV A4
FINISH SEE TABLE				