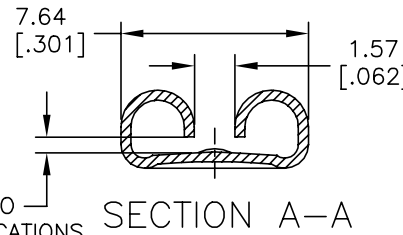
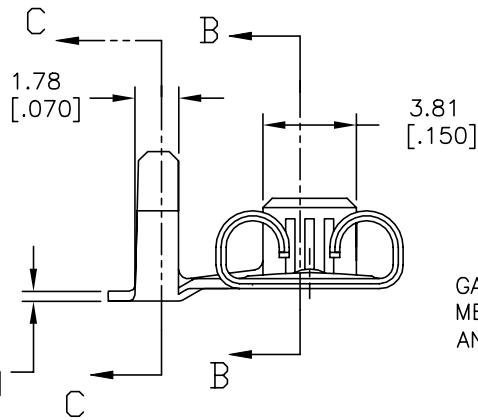
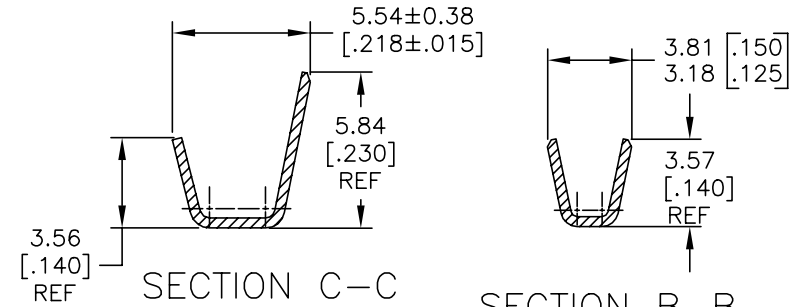
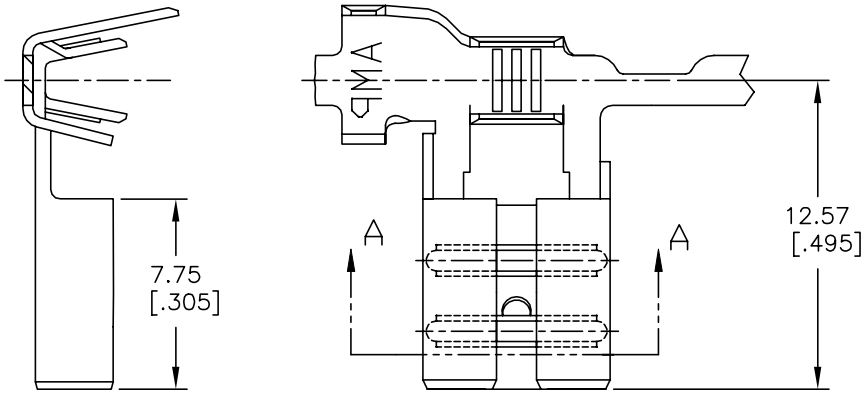


THIS DRAWING IS UNPUBLISHED. RELEASED FOR PUBLICATION
 © COPYRIGHT - By - ALL RIGHTS RESERVED.

| REVISIONS | | | | |
|-----------|-----|---------------------------|-----------|-------|
| P | LTR | DESCRIPTION | DATE | APVD |
| A4 | | REVISED PER ECR-20-009164 | 14AUG2020 | MK DH |

- CONTINUOUS STRIP ON REELS.
- WIRE SIZE #18-#14 AWG.
- INSULATION DIA 2.79-4.06 [.110-.160].
- MATING TAB THK IS 0.84-0.76 [.033-.030]
- RECEPTACLE IS DESIGNED TO OPTIMIZE MATING AND UNMATING FORCES ON A TAB WITH A RETENTION HOLE. VALUES MAY VARY ON A TAB WITH A DETENT.

WITH STRESS RELIEF PROCESS.



GAP AS REQUIRED TO MEET FORCE SPECIFICATIONS AND 0.71 [.028] MAX

| | |
|-----------|-----------|
| TIN PLATE | 1742999-3 |
| TIN PLATE | 1742999-2 |
| ----- | 1742999-1 |
| FINISH | PART NO. |

| DIMENSIONS: | | TOLERANCES UNLESS OTHERWISE SPECIFIED: | | DWN | | TE Connectivity | |
|-------------|--------|--|--------------|------------------|-----------|--|---------------|
| mm[INCHES] | | 0 PLC | ± - | JR RUTH | 30NOV2012 | RECEPTACLE, FLAG FASTON, .250 SERIES | |
| | | 1 PLC | ± - | CHK | 30NOV12 | | |
| | | 2 PLC | ± 0.25[.010] | PETE DESANTIS | | | |
| | | 3 PLC | ± - | APVD | 30NOV12 | | |
| | | 4 PLC | ± - | PETE DESANTIS | | NAME | RESTRICTED TO |
| | | ANGLES | ± - | PRODUCT SPEC | | SIZE | |
| MATERIAL | FINISH | SEE TABLE | | APPLICATION SPEC | | CAGE CODE | DRAWING NO |
| BRASS | | | | --- | | A3 | 00779 |
| | | | | WEIGHT | | C=1742999 | |
| | | | | CUSTOMER DRAWING | | SCALE | 5:1 |
| | | | | | | SHEET | 1 of 1 |
| | | | | | | REV | A4 |