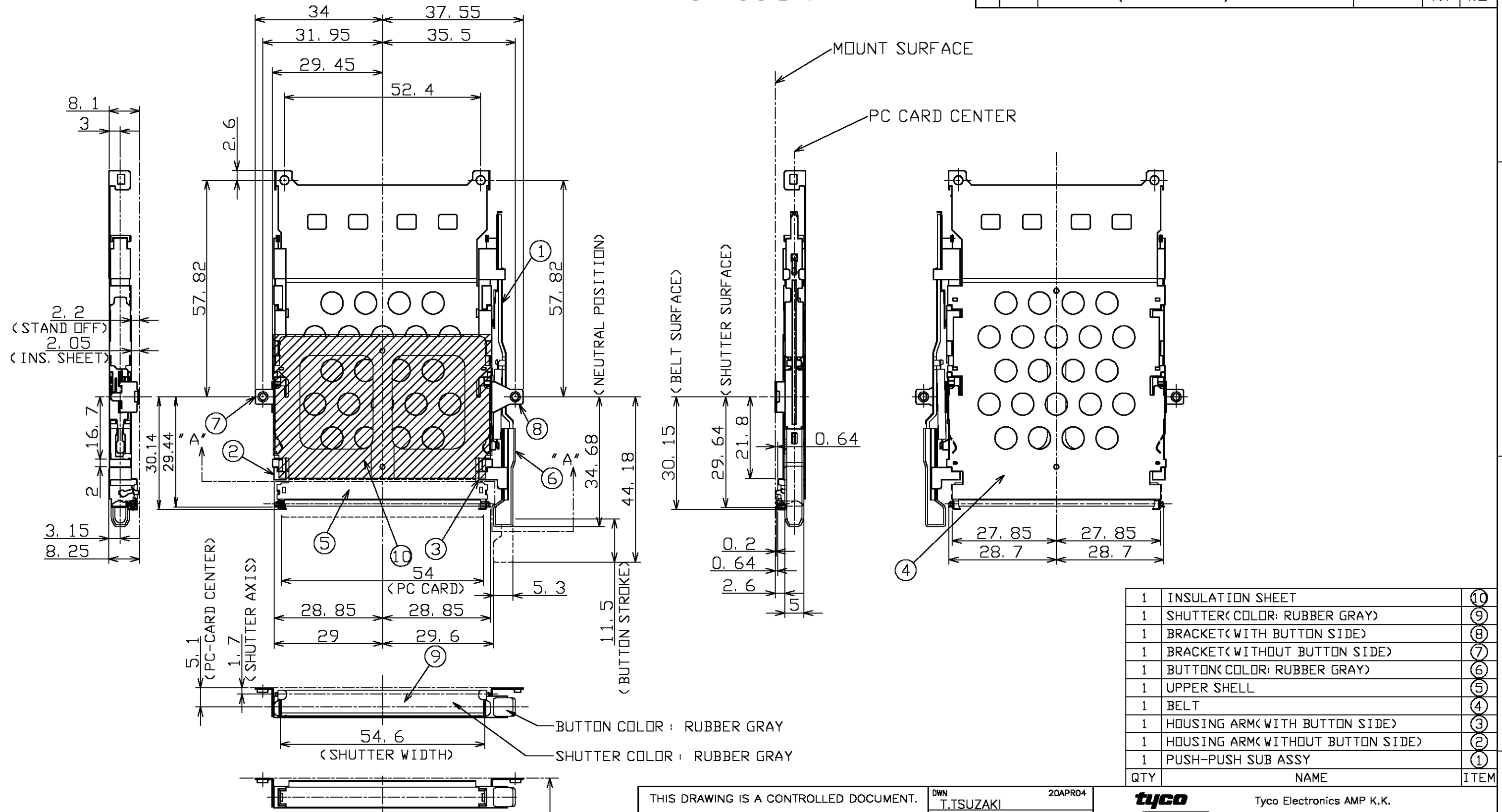


THIS DRAWING IS UNPUBLISHED. RELEASED FOR PUBLICATION APR '20 .
 © COPYRIGHT 2004 BY TYCO ELECTRONICS CORPORATION. ALL RIGHTS RESERVED.

LOC	DIST	REVISIONS					
J		P	LTR	DESCRIPTION	DATE	DWN	APVD
		0		RELEASED (FJB0-0403-04)	20APR04	T.T	I.E

-1 : AS SHOWN

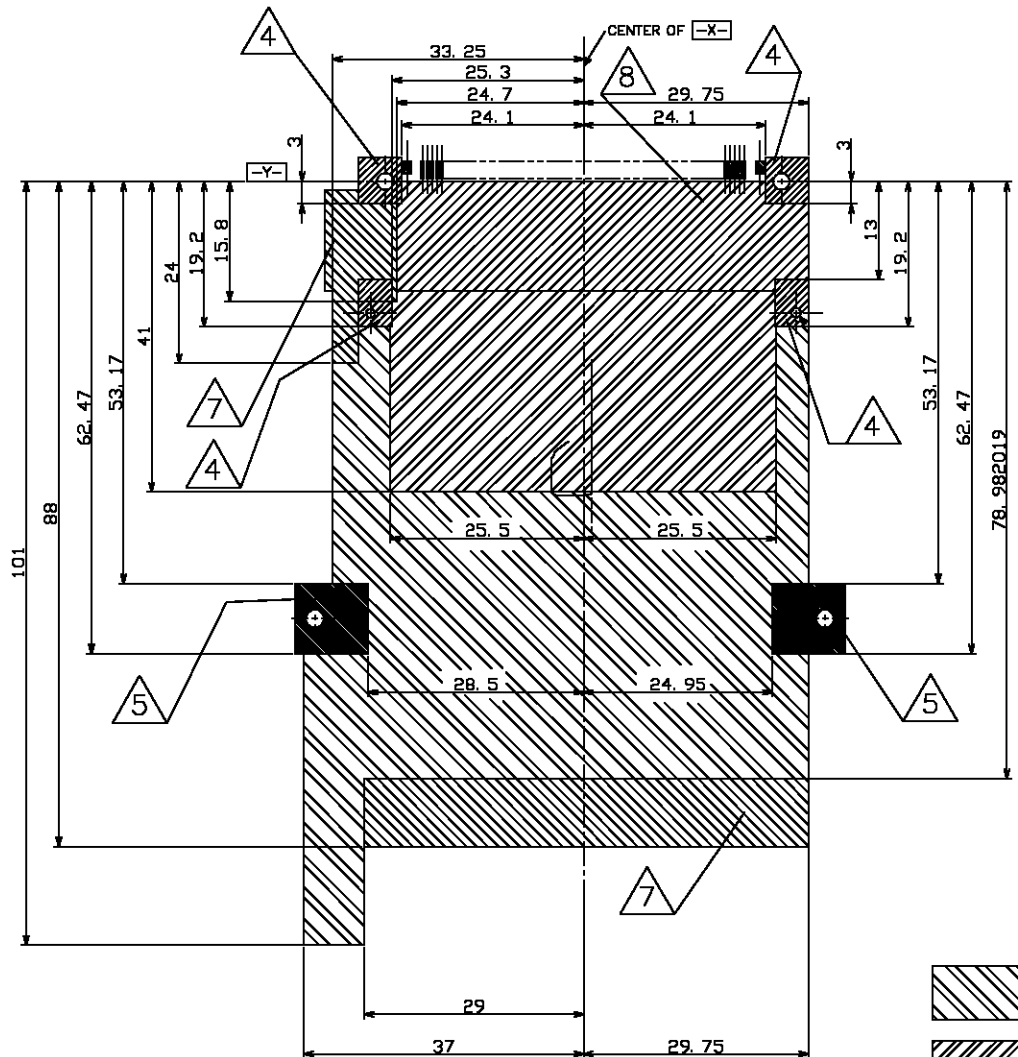
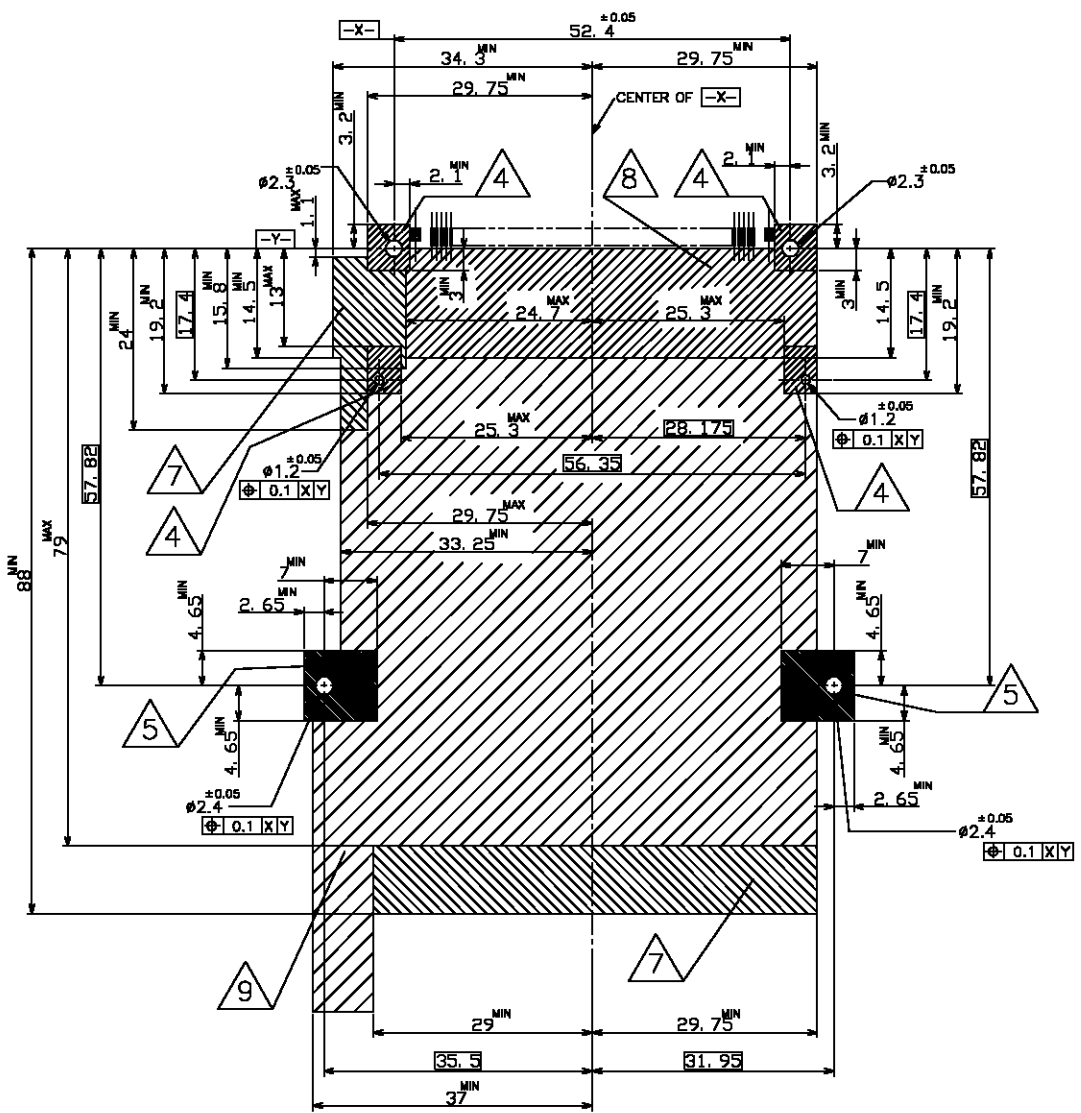


1	INSULATION SHEET	⑩
1	SHUTTER (COLOR: RUBBER GRAY)	⑨
1	BRACKET (WITH BUTTON SIDE)	⑧
1	BRACKET (WITHOUT BUTTON SIDE)	⑦
1	BUTTON (COLOR: RUBBER GRAY)	⑥
1	UPPER SHELL	⑤
1	BELT	④
1	HOUSING ARM (WITH BUTTON SIDE)	③
1	HOUSING ARM (WITHOUT BUTTON SIDE)	②
1	PUSH-PUSH SUB ASSY	①
QTY	NAME	ITEM

THIS DRAWING IS A CONTROLLED DOCUMENT.		DWN T.TSUZAKI 20APR04	Tyco Electronics AMP K.K. Kawasaki, Japan	
DIMENSIONS: 単位: 桁 MM		CHK K.YAMAGUCHI 20APR04		
TOLERANCES UNLESS OTHERWISE SPECIFIED: 一般公差		APVD I.ENOMOTO 20APR04	NAME 名称 SINGLE SLOT CARDBUS EJECTOR ASSY BOTTOM MOUNT TYPE, RIGHT BUTTON	
0 PLC ±		PRODUCT SPEC 製品規格 108-5678	SIZE A3	
1 PLC ±		APPLICATION SPEC 取付適用規格 411-5942, 411-78120	CAGE CODE 00779	DRAWING NO 番号 C-1747099
2 PLC ±		WEIGHT 17.3g	RESTRICTED TO	
3 PLC ±		CUSTOMER DRAWING		
4 PLC ±		SCALE 尺度 1:1		
ANGLES ±		SHEET 1 OF 3		
FINISH 仕上		REV 0		

THIS DRAWING IS UNPUBLISHED. RELEASED FOR PUBLICATION 4 .20 .
 © COPYRIGHT 2004 BY TYCO ELECTRONICS CORPORATION. ALL RIGHTS RESERVED.

LOC	DIST	REVISIONS		
J		P	LTR	DATE
		DESCRIPTION		DWN
				APVD

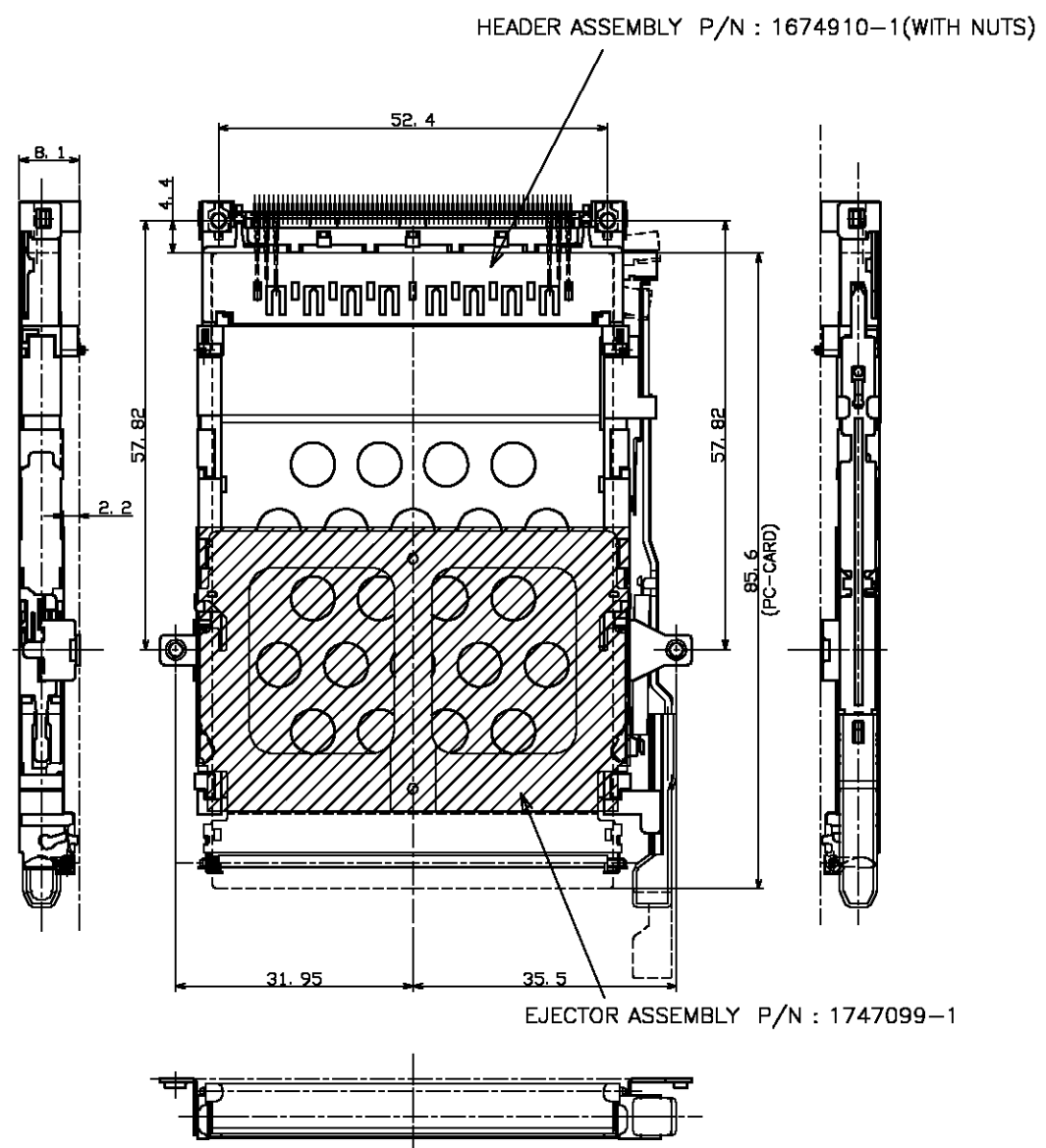


2.05MAX
2.3MAX

THIS DRAWING IS A CONTROLLED DOCUMENT.		DWN	Tyco Electronics AMP K.K. Kawasaki, Japan	
DIMENSIONS: 単位: 耗 MM	TOLERANCES UNLESS OTHERWISE SPECIFIED: 一般公差	CHK	NAME 名称	
	0 PLC ±	APVD	SINGLE SLOT CARDBUS EJECTOR ASSY BOTTOM MOUNT TYPE , RIGHT BUTTON	
	1 PLC ±	PRODUCT SPEC 製品規格	SIZE	CAGE CODE
MATERIAL 材料	2 PLC ±	APPLICATION SPEC 取付適用規格	DRAWING NO 番号	
	3 PLC ±	WEIGHT	A3 00779 C-1747099	
	4 PLC ±	CUSTOMER DRAWING		
	ANGLES ±	SCALE 2:1 SHEET 2 OF 3 REV 0		
	FINISH 仕上	RESTRICTED TO		

THIS DRAWING IS UNPUBLISHED. RELEASED FOR PUBLICATION 4 .20 .
 © COPYRIGHT 2004 BY TYCO ELECTRONICS CORPORATION. ALL RIGHTS RESERVED.

LOC	DIST	REVISIONS					
		P	LTR	DESCRIPTION	DATE	DWN	APVD
J							



注記

- 推奨ネジ締めトルク:0.15~0.2Nm(1.5~2kgf・cm)
- ネジの締め付けの際は、イジェクタが基板から離れないように、ブラケットの下側を支えて下さい。(参考規格:411-5942)
- 適用PCカード:PCMCIA準拠のPCカード
- 実装エリア (パターン禁止エリア)
- グランド パッド
- 半田付けパッド
- 部品実装及びパターン禁止エリア
- 部品実装禁止エリア
- コネクタエリア
- ネジ締め時のネジ押し付け力: 14.7N(1.5kgf)以下
- 一般公差: ±0.5, ±3'

NOTE

- RECOMMENDED TIGHTENING TORQUE:0.15~0.2Nm(1.5~2kgf・cm)
- WHEN SCREW LOCK TO THE EJECTOR , PLEASE SUPPORT THE BOTTOM SIDE OF BRACKET AS SHOWN. (REFERENCE SPEC.:411-5942)
- APPLIED CARD:PCMCIA ATTRIBUTE PC CARD.
- NO ELECTRONICS COMPONENTS.(NO SIGNAL LINE AREA)
- GROUNDING PAD.
- SOLDERING PAD.
- NO COMPONENT AND NO SIGNAL LINE AREA.
- NO COMPONENT AREA.
- CONNECTOR AREA.
- THE AXIAL FORCE TO SCREW WHEN MOUNTING CARDBUS : 14.7N(1.5kgf)MAX.
- GENERAL TOLERANCE:±0.5 , ±3'

THE FIGURE WHICH ATTACHED HEADER-ASSEMBLY
 REFERENCE FIGURE

THIS DRAWING IS A CONTROLLED DOCUMENT.		DWN	Tyco Electronics AMP K.K. Kawasaki, Japan	
DIMENSIONS: 単位: 耗 MM		CHK	NAME 名称	
TOLERANCES UNLESS OTHERWISE SPECIFIED: 一般公差 0 PLC ± 1 PLC ± 2 PLC ± 3 PLC ± 4 PLC ± ANGLES ±		APVD	SINGLE SLOT CARDBUS EJECTOR ASSY BOTTOM MOUNT TYPE , RIGHT BUTTON	
MATERIAL 材料		PRODUCT SPEC 製品規格	SIZE	RESTRICTED TO
FINISH 仕上		APPLICATION SPEC 取付適用規格	CAGE CODE	
		WEIGHT	DRAWING NO 番号	
		A3 00779 C-1747099		
CUSTOMER DRAWING		SCALE 尺度	SHEET	REV
		1:1	3 OF 3	0