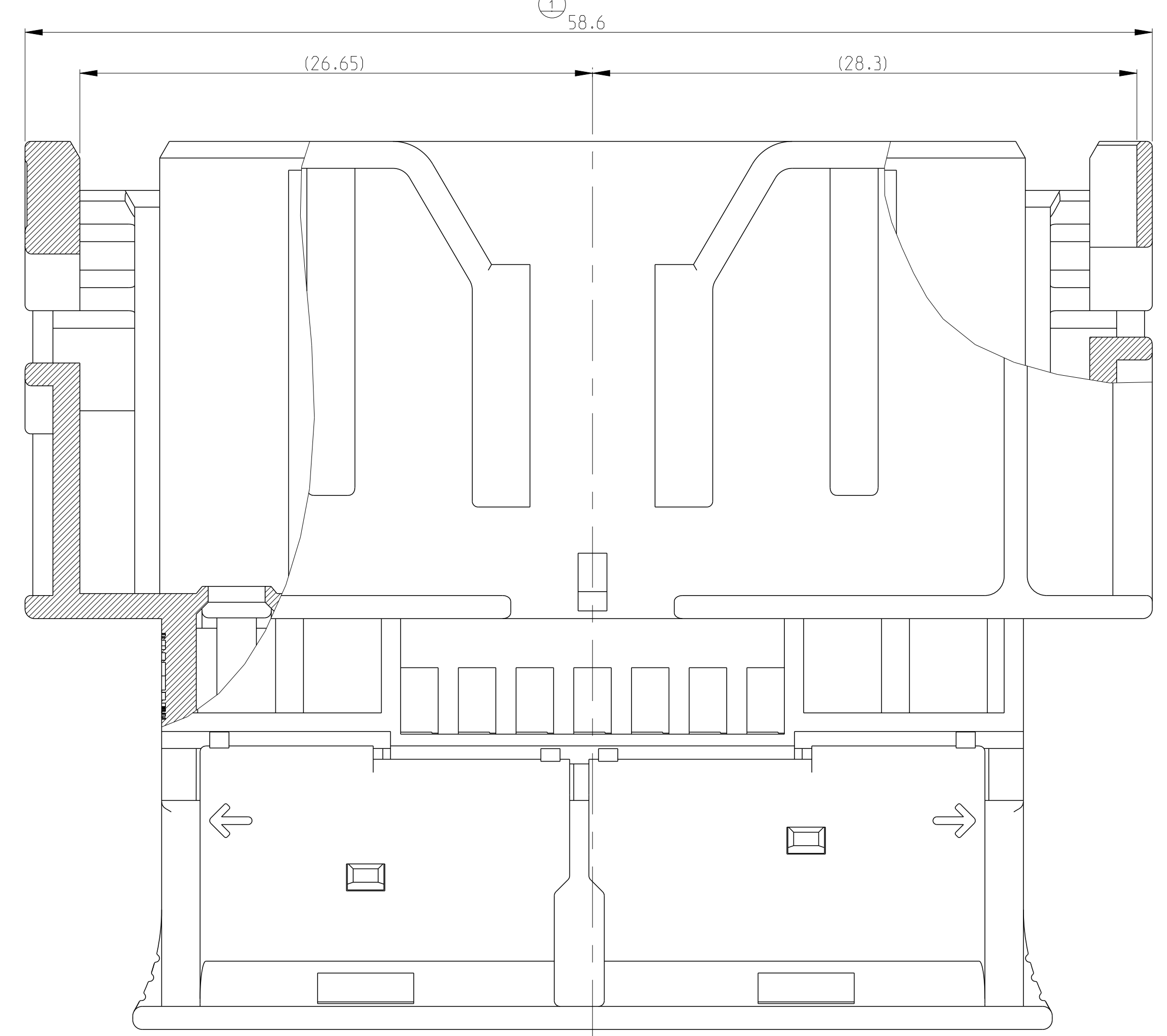
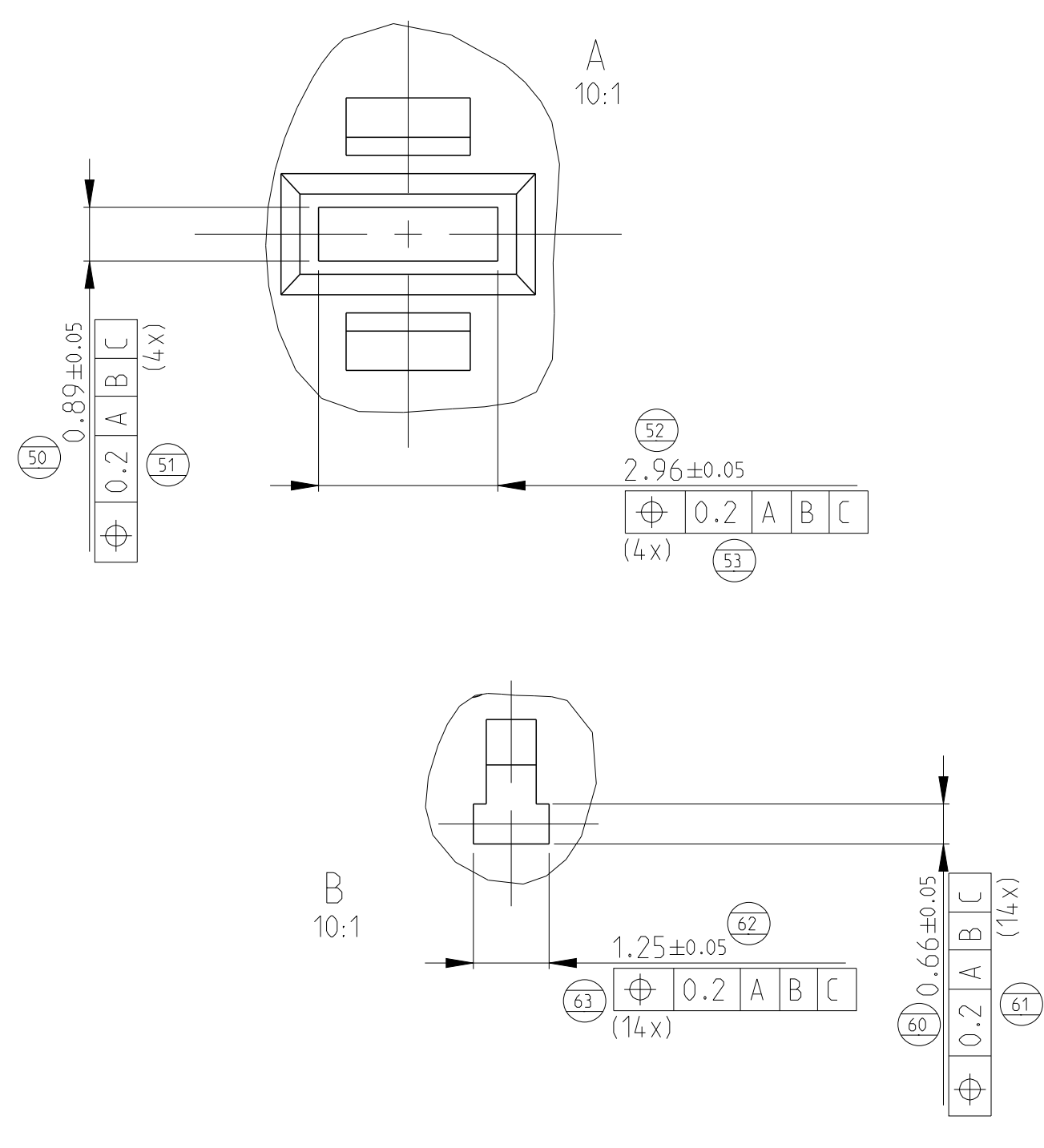
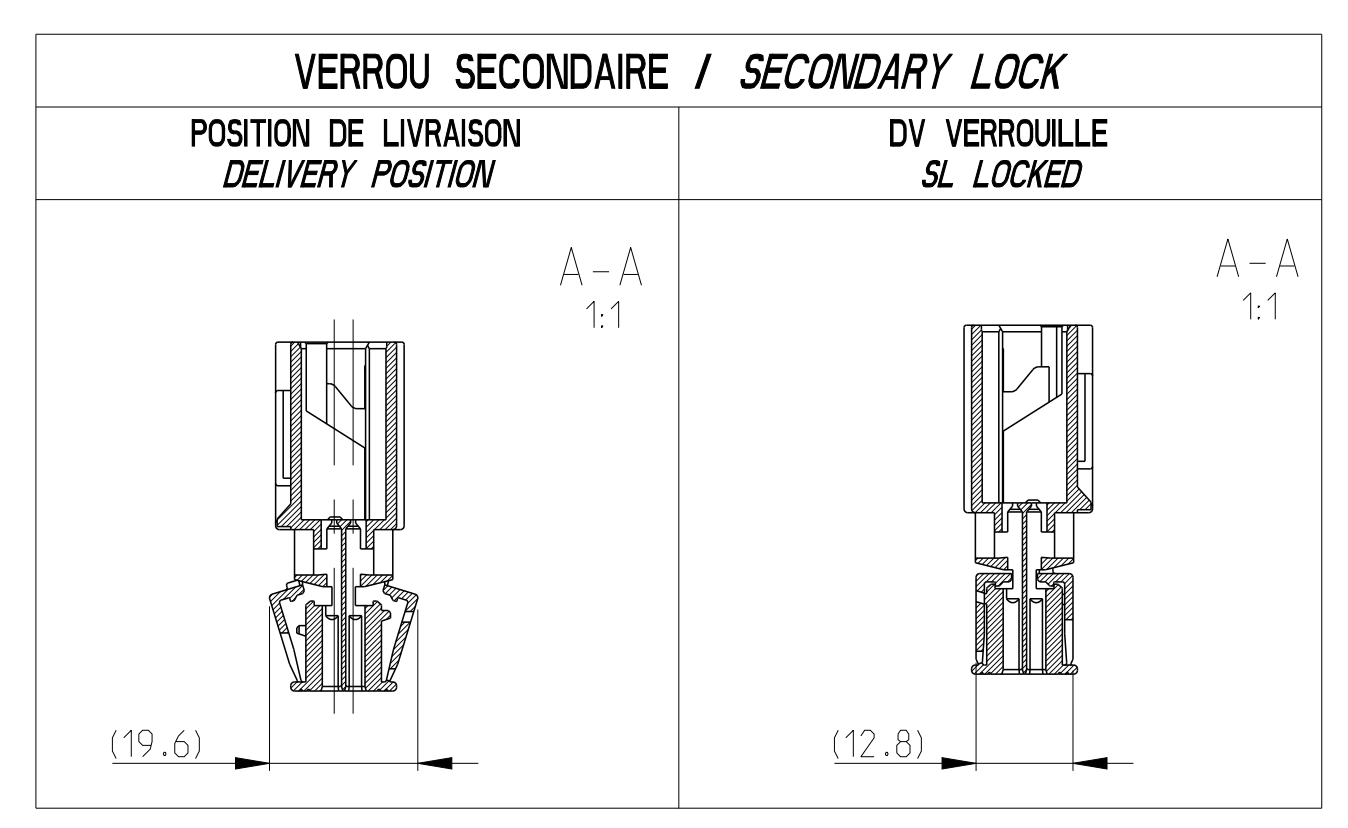
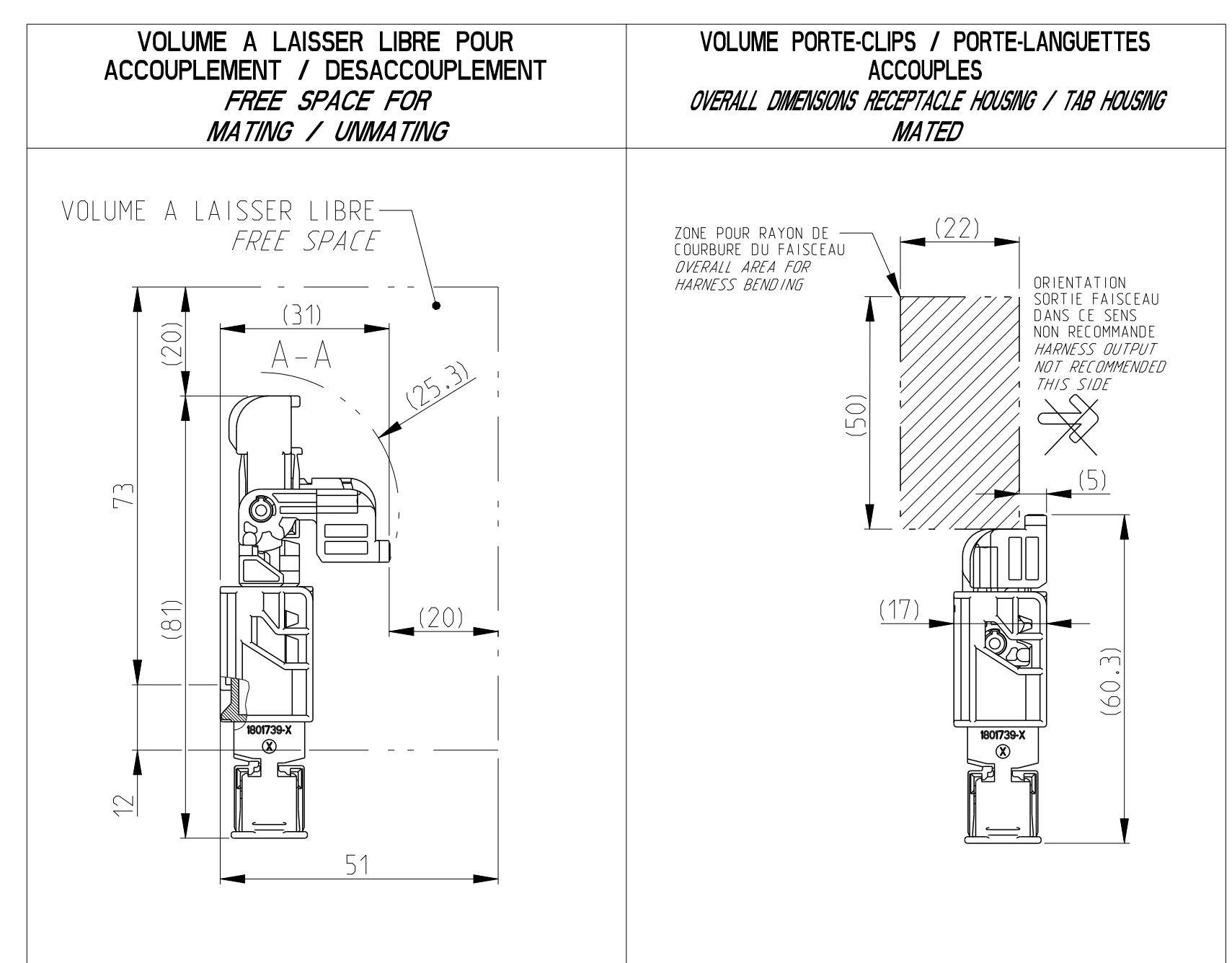


| LOC | DIST | REV | DESCRIPTION | DATE | ENV | APP |
|-----|------|-----|-----------------|------------|-----|-----|
| | | A | INITIAL RELEASE | 28/06/2013 | CV | JO |



NOTES:

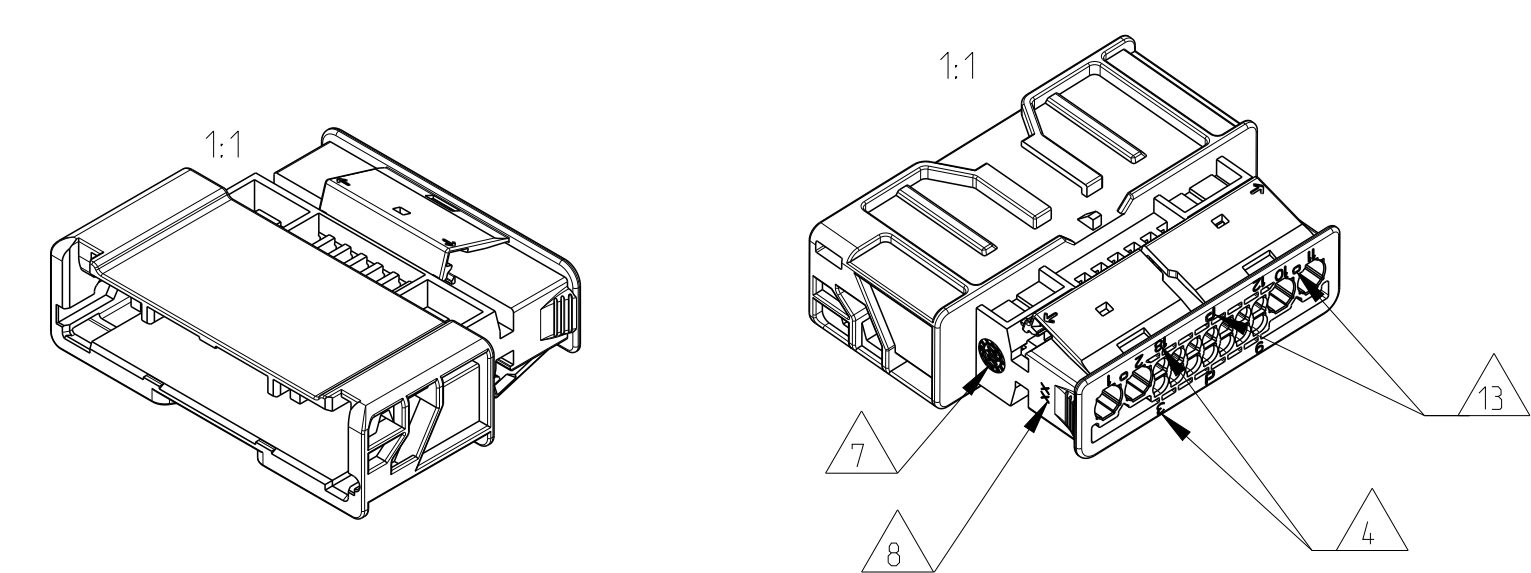
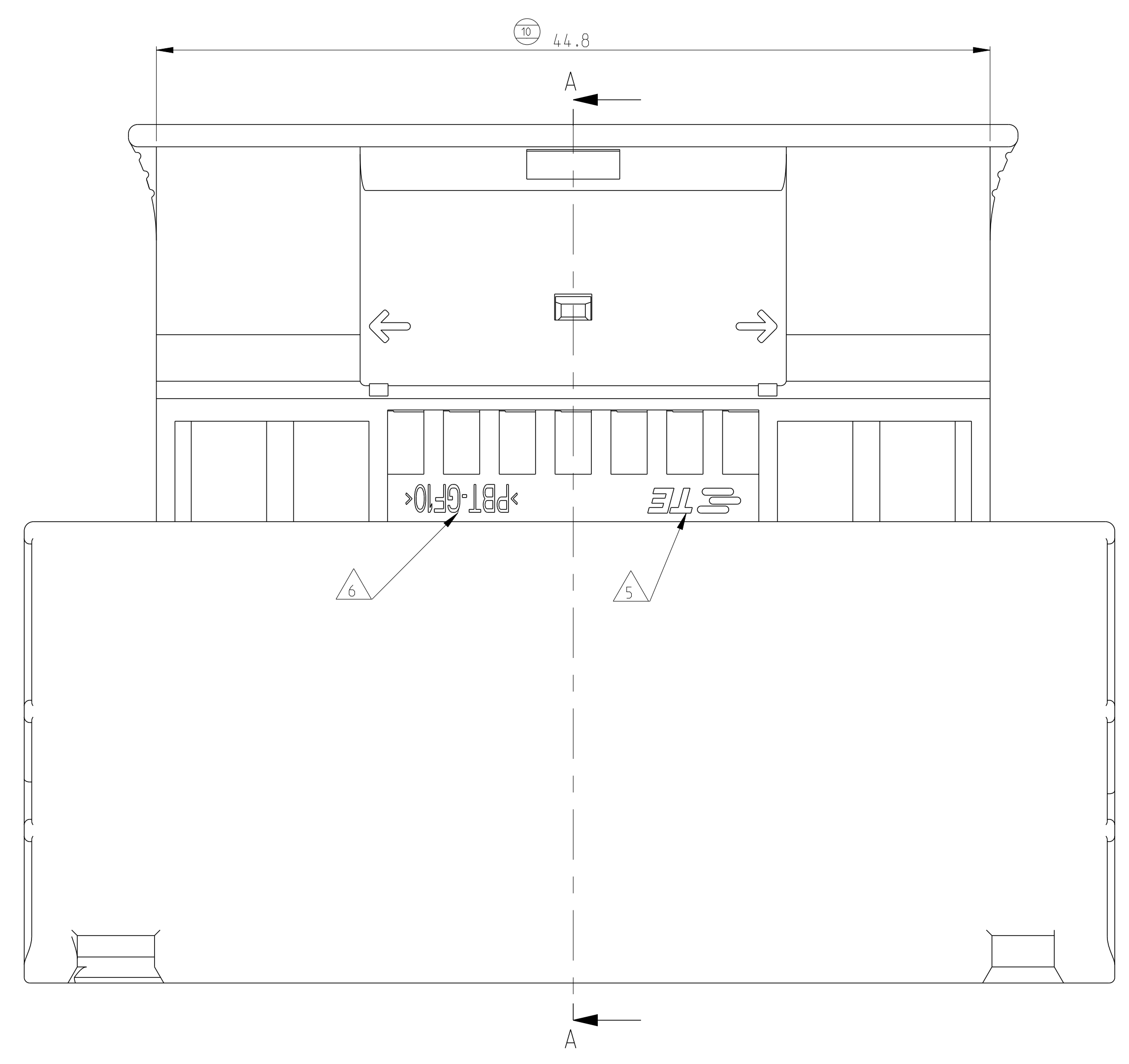
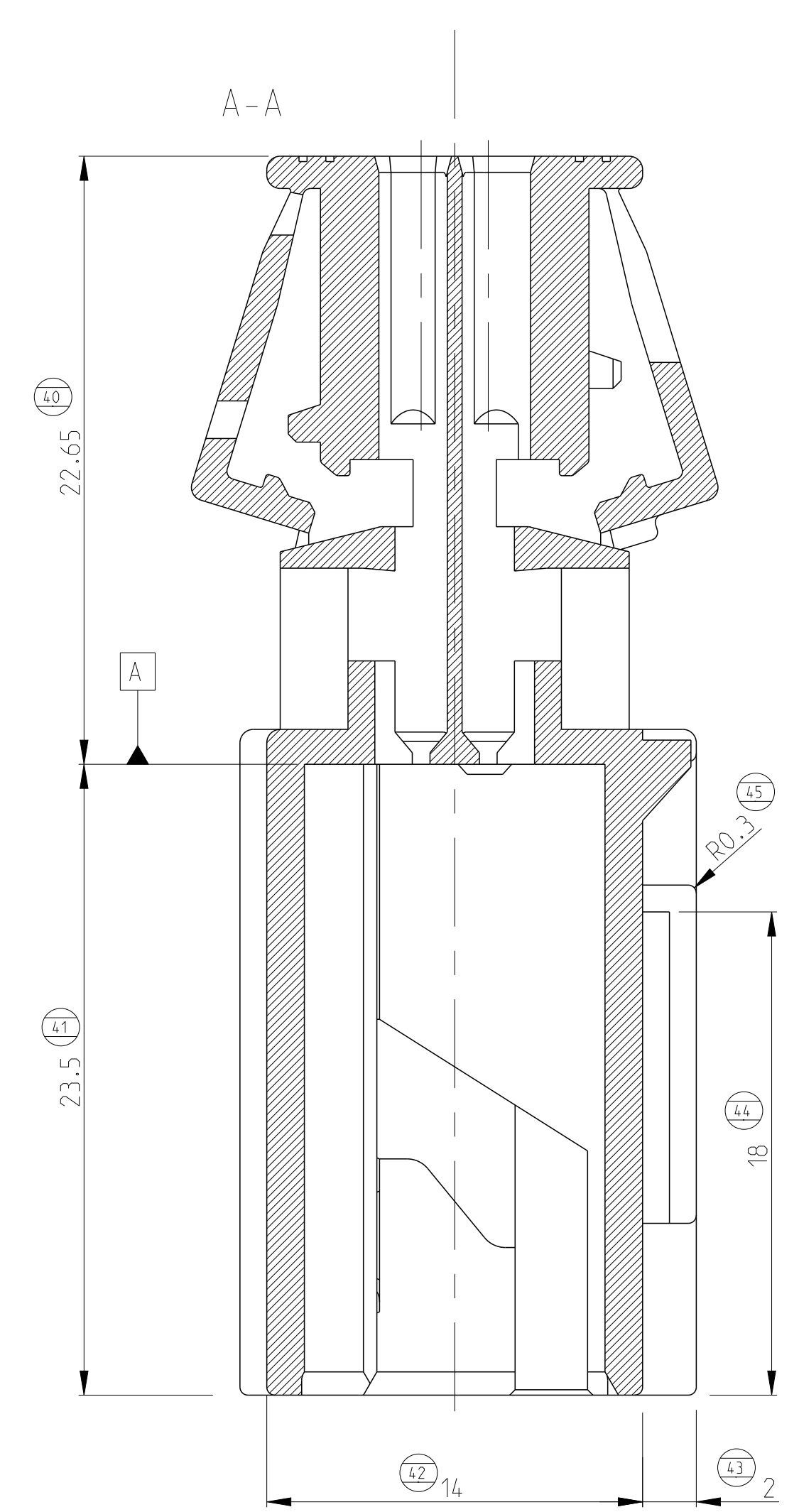
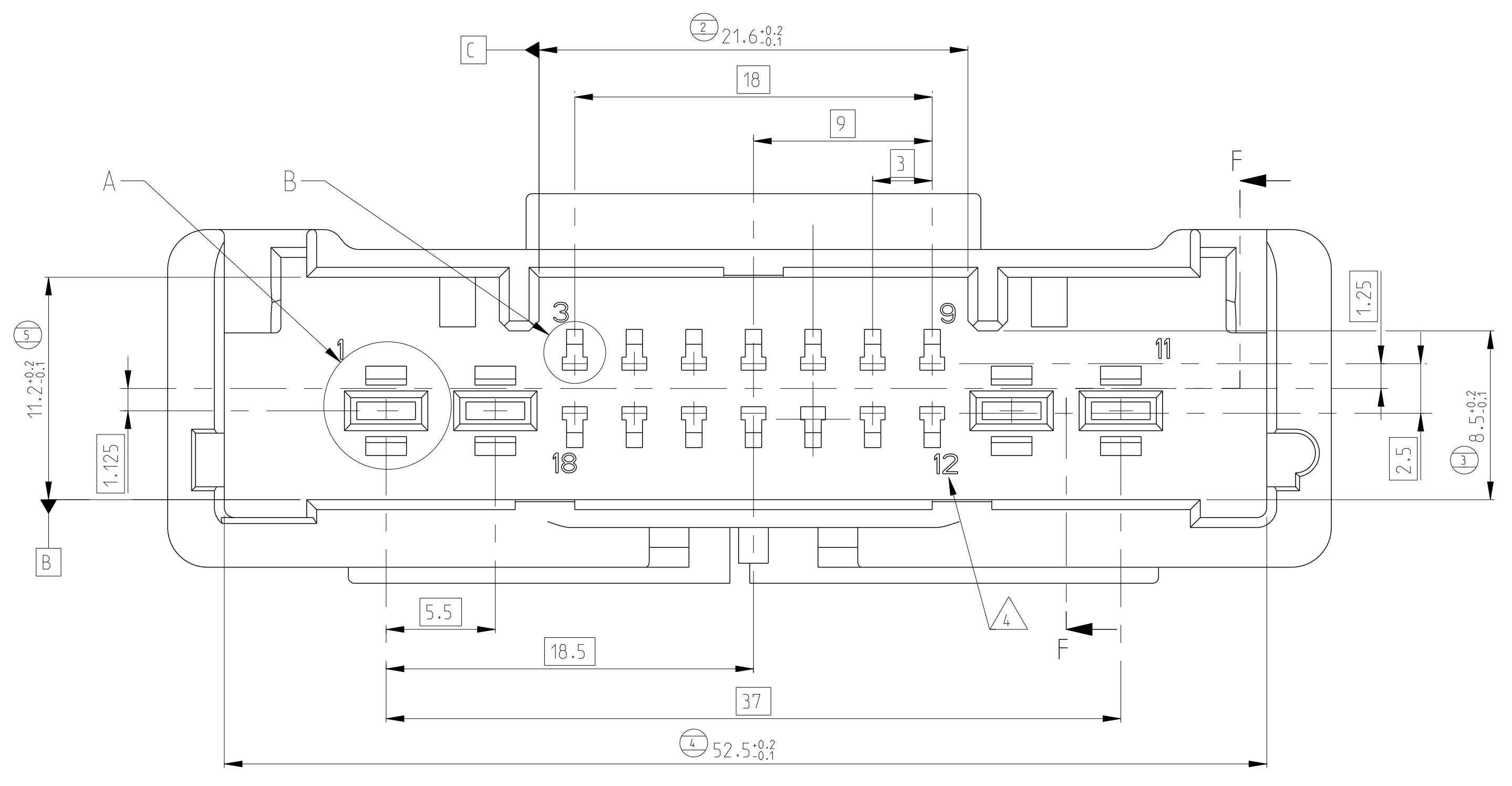
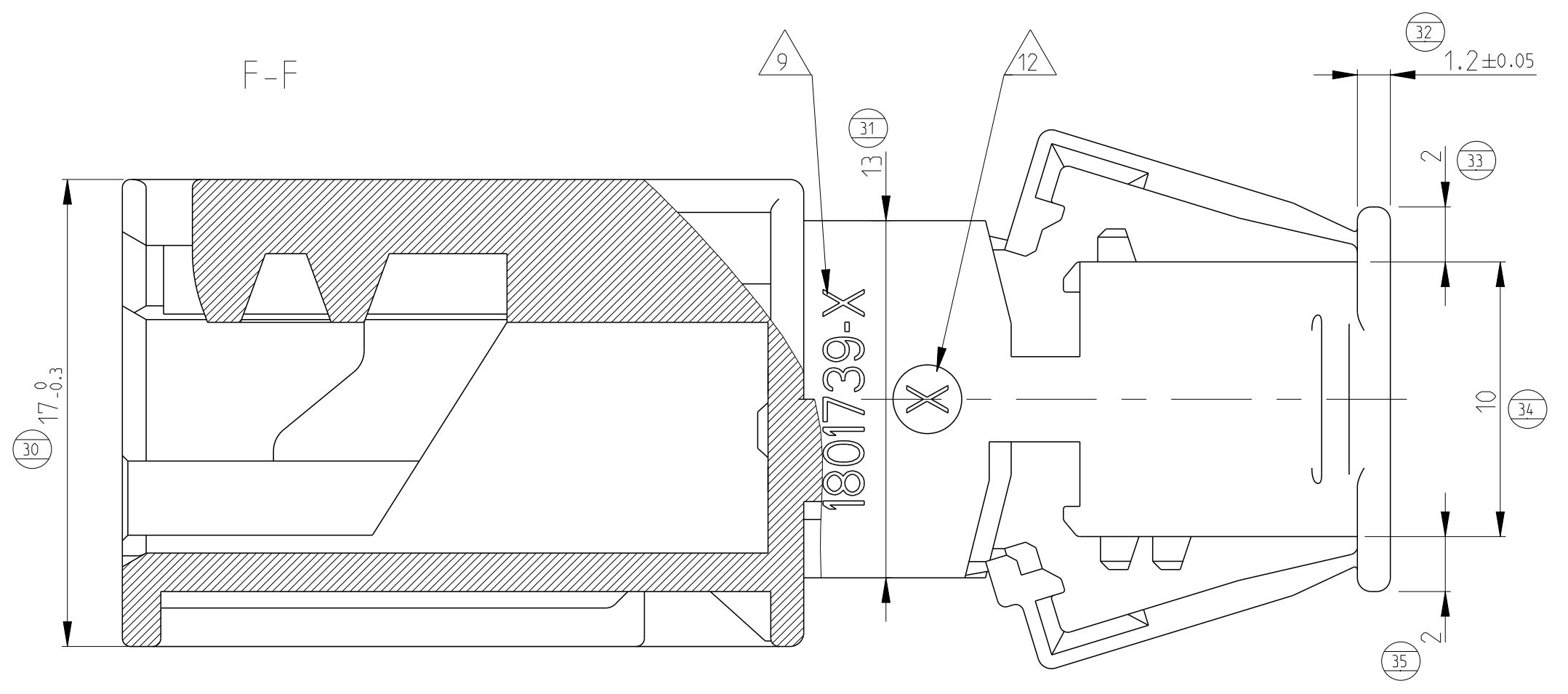
| | | |
|----|---|---|
| 1 | 1801739-1: REPRESENTE | 1801739-1: AS SHOWN |
| 2 | COMPATIBLE AVEC ALVEOLES STD. LANGUETTES MCON 1.2 | COMPATIBLE WITH CAVITY STANDARD TAB MCON 1.2 |
| 3 | CONDITIONNEMENT SUIVANT NORME: E73-03-150G | PACKAGING IN ACCORDANCE WITH STANDARD: (SEE BEFORE) |
| 4 | REPERE ALVEOLES | CAVITY NUMBER |
| 5 | LOGO TE | TE STAMP |
| 6 | IDENTIFICATION MATIERE | MATERIAL IDENTIFICATION |
| 7 | DATE DE MOULAGE | MOLDING DATE CODE |
| 8 | N° EMPREINTE DU MOULE | MOLD CAVITY IDENTIFICATION |
| 9 | REFERENCE PRODUIT | PART NUMBER |
| 10 | CAHIER DE PRECONISATION: 408-15014 | INSTRUCTION SHEET: (SEE BEFORE) |
| 11 | INDICE DE REVISION DU PRODUIT | PART REVISION CODE |
| 12 | LOGO POUR ORIENTATION DU CONTACT | LOGO FOR CONTACT ORIENTATION |
| 14 | COMPATIBLE AVEC LANGUETTES MCON 1.2 LL 1418754 | COMPATIBLE WITH MCON 1.2 LL TAB 1418754 |
| 15 | COMPATIBLE AVEC LANGUETTES 2.8 1355052 | COMPATIBLE WITH 2.8 TAB 1355052 |

COMPOSANTS ASSOCIES / ASSOCIATED COMPONENTS

| SERTISSAGE STANDARD LANGUETTE MCON 1.2 LL STANDARD CRIMP 1.2 LL TAB | | |
|--|----------------|---------------------------|
| 1418762-1 | ETAME / TINNED | 1.0mm ² |
| 1418760-1 | ETAME / TINNED | 0.5 - 0.75mm ² |
| 1418758-1 | ETAME / TINNED | 0.35mm ² |

| SERTISSAGE STANDARD LANGUETTE 2.8 STANDARD CRIMP 2.8 TAB | | |
|---|----------------|---------------------------|
| 1-968946-1 | ETAME / TINNED | 3.0 - 4.0mm ² |
| 1-962842-1 | ETAME / TINNED | 1.5 - 2.5mm ² |
| 1-962841-1 | ETAME / TINNED | 0.75 - 1.0mm ² |
| 1-963860-1 | ETAME / TINNED | 0.5mm ² |

| REFERENCE TE / TE PN | REVETEMENT / COATING | SECTIONS FILS / WIRE SIZE RANGE |
|----------------------|----------------------|---------------------------------|
| | | |



CODAGE: KEYING
TOLERANCES POUR DETROMPAGES: ±0.15
KEYING TOLERANCES: ±0.15

| REF. TE / TE PN | RESULTAT / RESULTING COLOR | COULEUR / COLOR |
|-----------------|----------------------------|-----------------|
| 1801739-1 | A | NOIR / BLACK |
| 1801739-2 | A | GRIS / GREY |
| 1801739-3 | A | BLEU / BLUE |
| 1801739-4 | A | MARRON / BROWN |
| 1801739-5 | A | VIOLET / PURPLE |