

THIS DRAWING IS UNPUBLISHED.

RELEASED FOR PUBLICATION JUNE ,2004.

REVISIONS

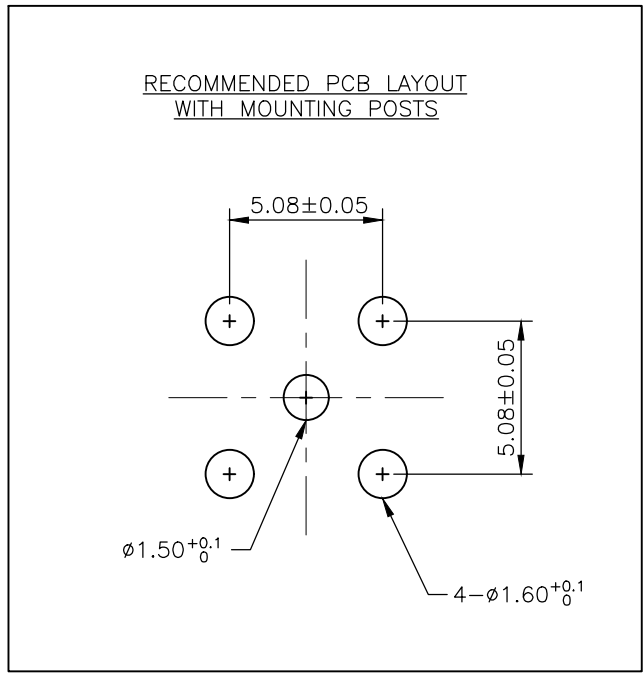
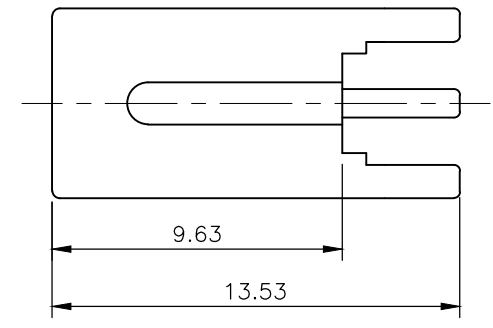
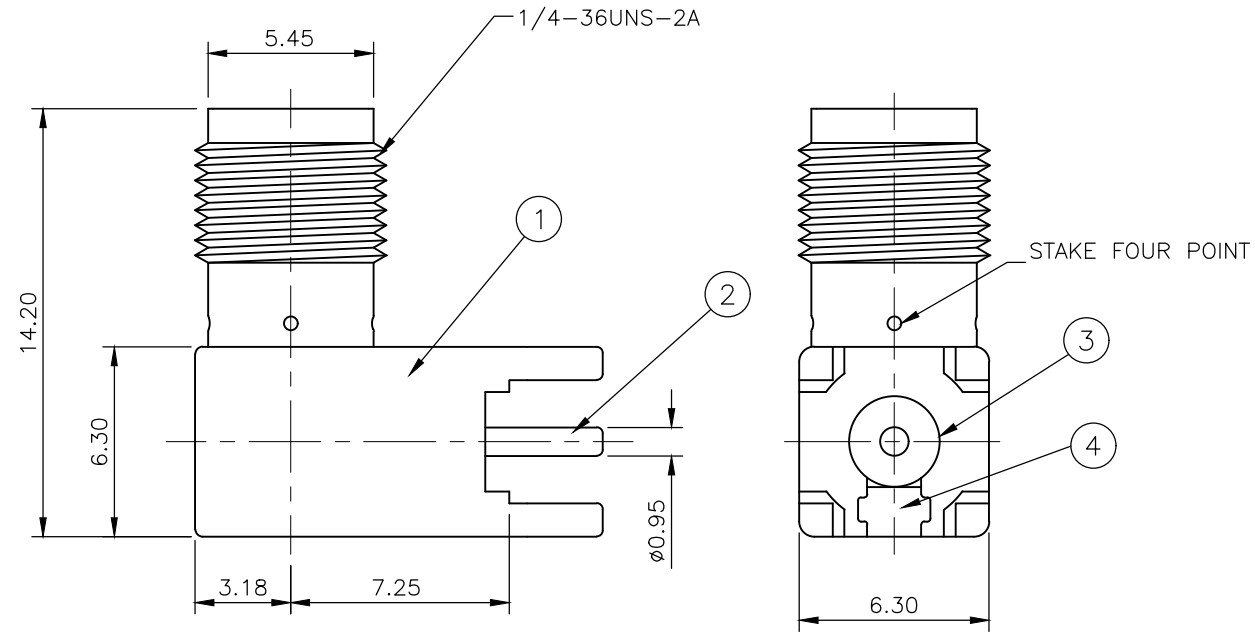
© COPYRIGHT 2004 By -

ALL RIGHTS RESERVED.

P	LTR	DESCRIPTION	DATE	DWN	APVD
	F	ecr-19-011875	09AUG2019	RZ	RS

NOTES

- 1 SINGLE PACK IN ACCORDANCE WITH TE SPEC 107-3275
- 2 100 TRAY PACK IN ACCORDANCE WITH TE SPEC 107-3275
- 3 Au PLATING
- 4. FOR TECHNICAL DATA REFER TO YOUR LOCAL TE CONNECTIVITY SALES OFFICE
- 5. ALL DIMENSIONS ARE NOMINAL FOR REFERENCE ONLY UNLESS OTHERWISE STATED
- 6. PACKAGING, 350/REEL X 4 = 1400 PER BOX



QTY	DESCRIPTION	ITEM
1	ZINC ALLOY	CAP
1	PTFE	INSULATOR
1	BERYLLIUM COPPER	CONTACT
1	ZINC ALLOY	BODY
5--25--15--0	MATERIAL	DESCRIPTION

QUANTITY PER ASSY

PARTS LIST

THIS DRAWING IS A CONTROLLED DOCUMENT.		DWN ANSON MA 17MAR09	<b>STE</b> TE Connectivity	
DIMENSIONS: mm		CHK RITA ZUO 17MAR09		
TOLERANCES UNLESS OTHERWISE SPECIFIED:		APVD BOB ZHAO 17MAR09	NAME SMA RIGHT ANGLE PCB SOCKET DIE CAST	
0 PLC ± 0.5		PRODUCT SPEC 108-112000	SIZE CAGE CODE DRAWING NO RESTRICTED TO	
1 PLC ± 0.3		APPLICATION SPEC	WEIGHT 0.000000 A300779 C-1814400	
2 PLC ± 0.2		FINISH	SCALE NTS SHEET 1 OF 2 REV F	
3 PLC ± -		MATERIAL SEE TABLE	CUSTOMER DRAWING	
4 PLC ± -				
ANGLES ± -				

THIS DRAWING IS UNPUBLISHED.

RELEASED FOR PUBLICATION JUNE , 2004.

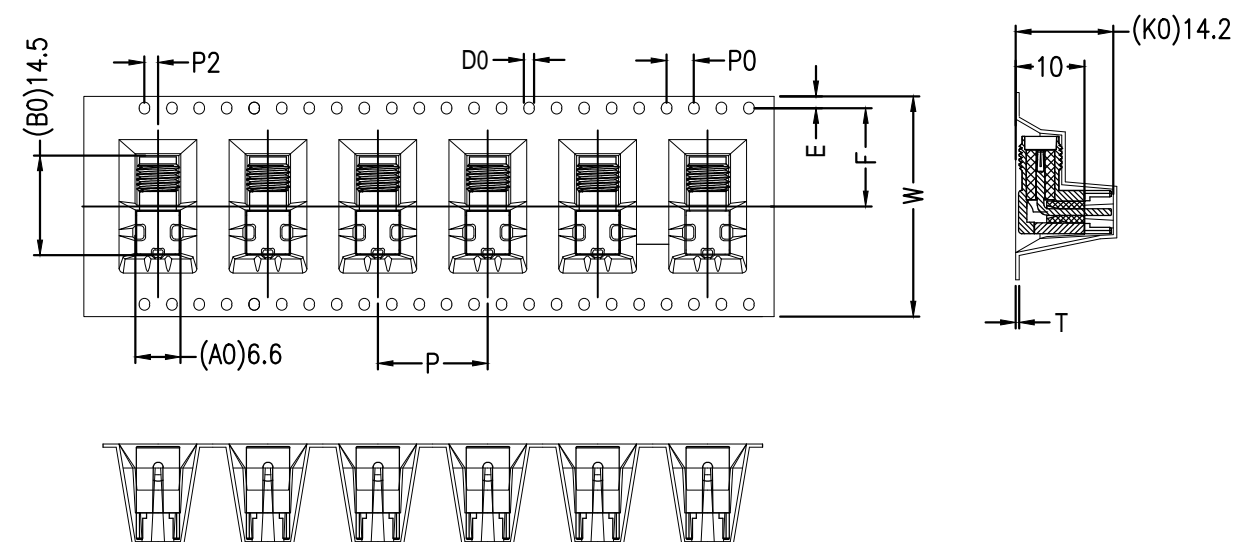
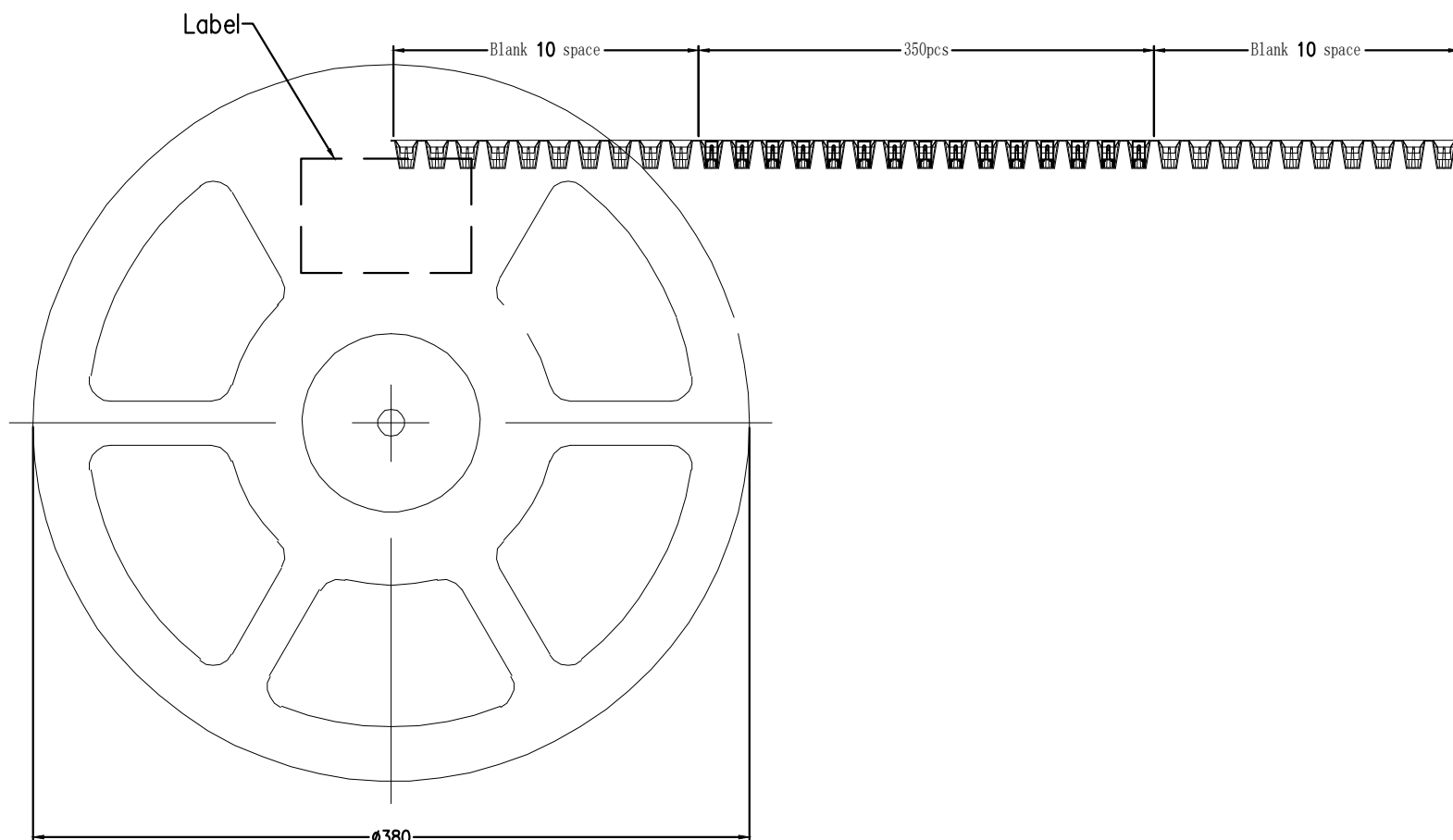
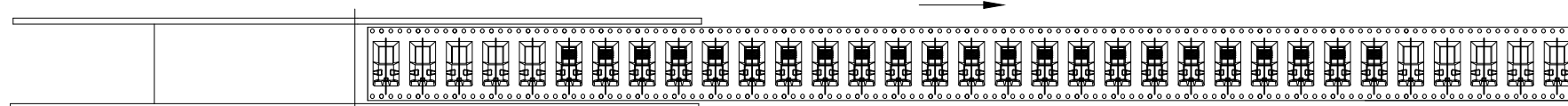
© COPYRIGHT 2004 By -

ALL RIGHTS RESERVED.

REVISIONS

P	LTR	DESCRIPTION	DATE	DWN	APVD
-	-	SEE SHEET 1	-	-	-

FEED DIRECTION



symbol	AO	BO	KO	PO	P	P2
Spec	6.60±0.10	14.5±0.10	14.20±0.10	4.00±0.10	16.0±0.10	2.00±0.10
symbol	W	T	E	F	DO	
Spec	32.0±0.30	0.50±0.05	1.75±0.10	14.2±0.10	1.50±0.10	

THIS DRAWING IS A CONTROLLED DOCUMENT.

DWN ANSON MA 17MAR09

CHK RITA ZUO 17MAR09

APVD BOB ZHAO 17MAR09

PRODUCT SPEC

108-112000

APPLICATION SPEC

WEIGHT 0.000000

CUSTOMER DRAWING

**STE** TE Connectivity

NAME SMA RIGHT ANGLE PCB SOCKET DIE CAST

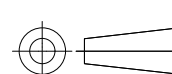
SIZE CAGE CODE DRAWING NO RESTRICTED TO

A3 00779 C-1814400

SCALE NTS SHEET 2 OF 2 REV F

DIMENSIONS:

mm



TOLERANCES UNLESS OTHERWISE SPECIFIED:

0 PLC	± 0.5
1 PLC	± 0.3
2 PLC	± 0.2
3 PLC	± -
4 PLC	± -
ANGLES	± -

MATERIAL

SEE TABLE

FINISH

-