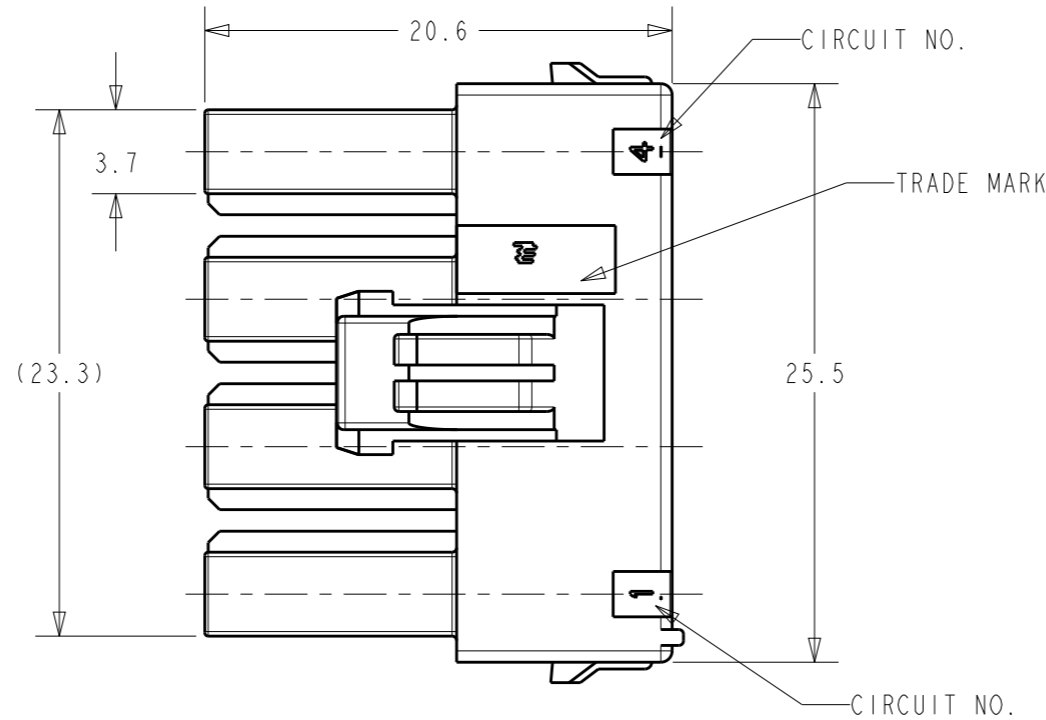
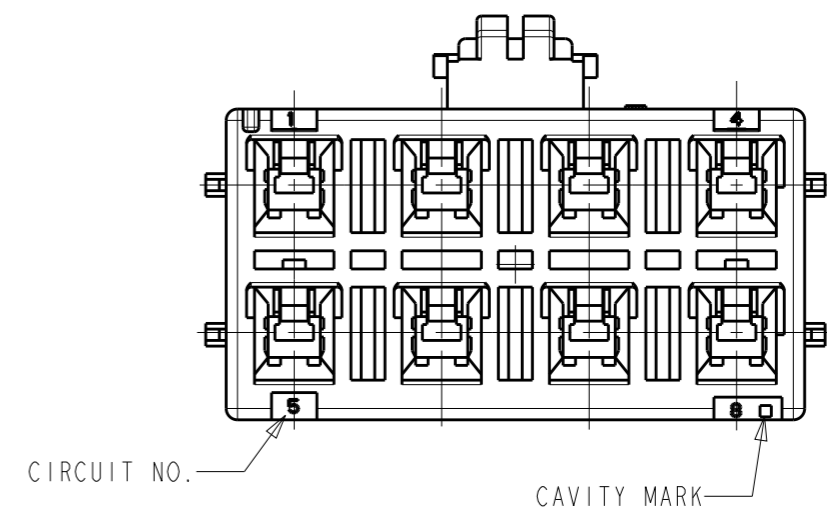
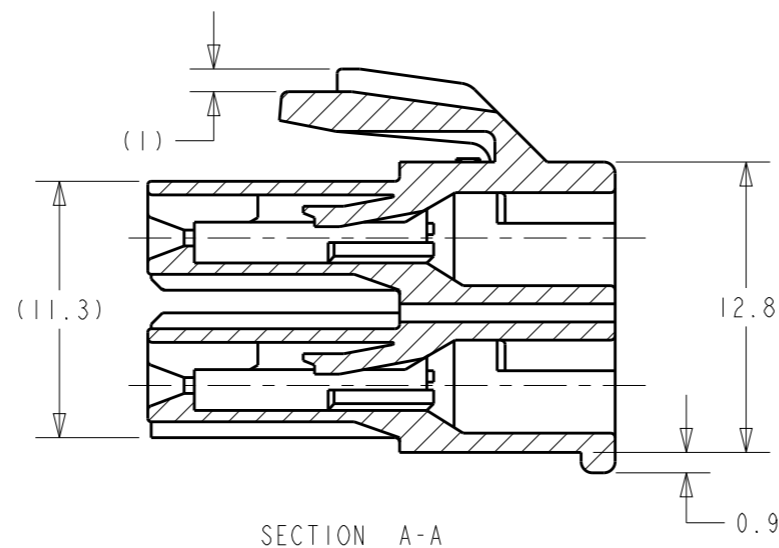
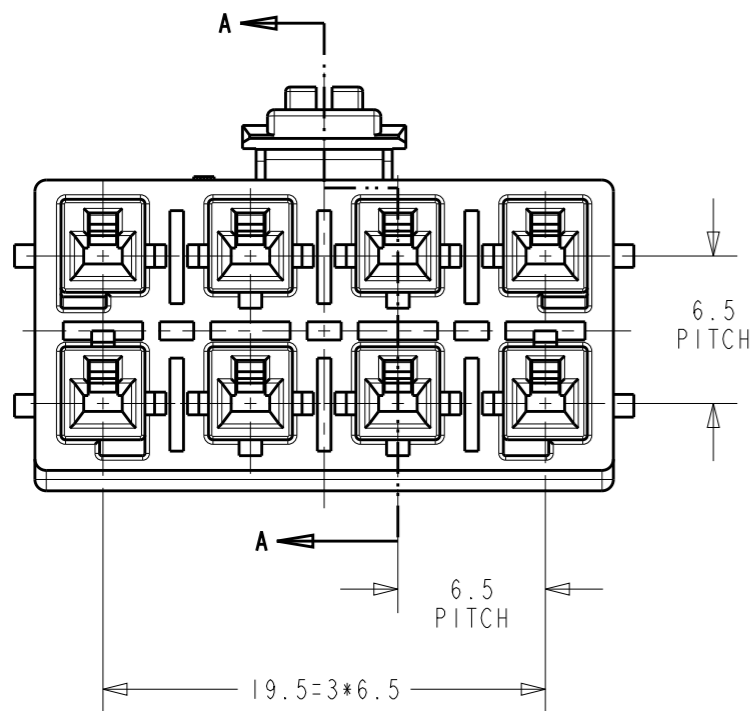


REVISIONS				
P	LTR	DESCRIPTION	DATE	APVD
R		REVISED PER ECR-19-009721	01JUL2019	M.G D.Z



- 1 THIS HOUSING ACCEPTS RECEPTACLE TERMINAL:
 177915-□ (#20-#16 AWG)
 177914-□ (#26-#22 AWG)
- 2 MATING CONN. P/N
 HDR ASS'Y: 1827197-□
- 3 APPLICABLE DOUBLE LOCK PLATE P/N: 316063-1
- 4 GENERAL TOLERANCE: ±0.3, ±3°
- 5 MATERIAL: 66 NYLON UL 94V-0
- 6 PART 5-1827196-1 COMPLY WITH GLOW WIRE REQUIREMENT FOR PARTS OF NON-METALLIC MATERIAL SUPPORTING A CURRENT-CARRYING CONNECTION DETAILED IN IEC 60335-1, SECTION 30(GWT)



NATURAL	8	5-1827196-1
NATURAL	8	1827196-1
HOUSING COLOR	POS	PART NUMBER

THIS DRAWING IS A CONTROLLED DOCUMENT.		DWN J. SATO 02NOV2004	TE Connectivity	
DIMENSIONS: mm		CHK A. OISHI 02NOV2004		
TOLERANCES UNLESS OTHERWISE SPECIFIED:		APVD N. YAMASAKI 02NOV2004	NAME AMP POWER DOUBLE LOCK CONN. 6.5mm PITCH PLUG HOUSING 8Pos (DBL ROW)	
0 PLC ±.015		PRODUCT SPEC 108-5410	SIZE A3	
1 PLC ±.015		APPLICATION SPEC 114-5175	CAGE CODE 00779	DRAWING NO. 1827196
2 PLC ±.015		WEIGHT NET 3.130g/EA	RESTRICTED TO -	
3 PLC ±.015		CUSTOMER DRAWING	SCALE 4:1 SHEET 1 OF 1 REV R	
4 PLC ±.015				
ANGLES ±.015				
FINISH -				
MATERIAL 5				