

4

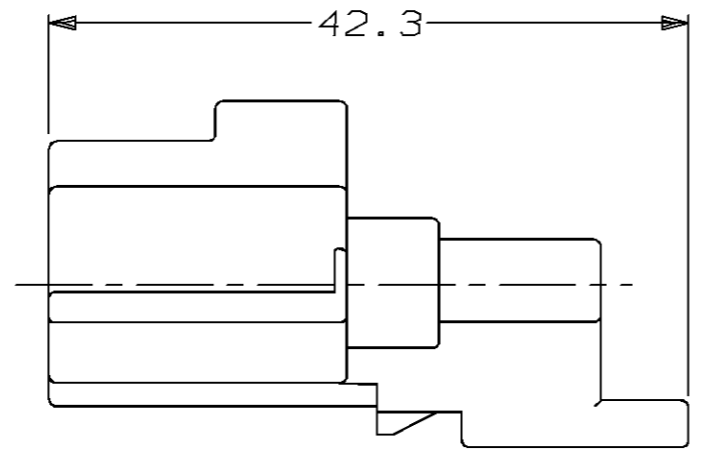
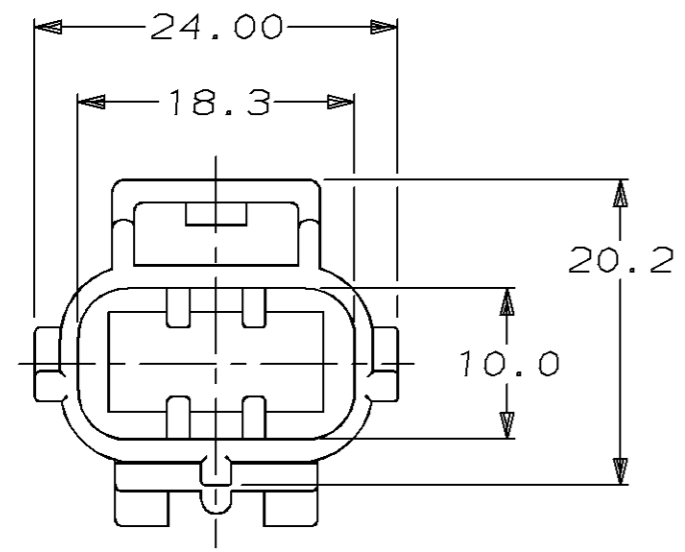
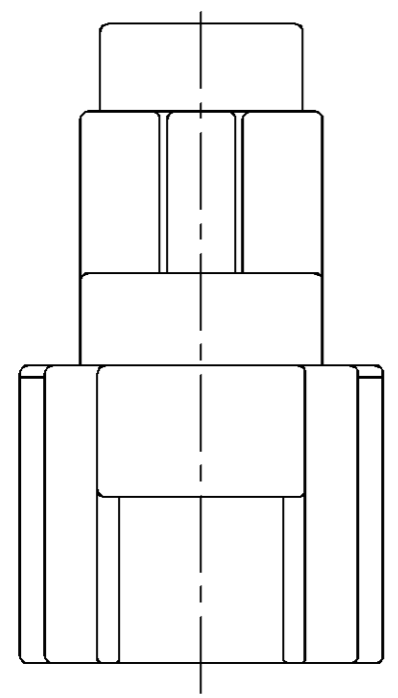
3

2

1

THIS DRAWING IS UNPUBLISHED. RELEASED FOR PUBLICATION, 19 .
 © COPYRIGHT 19 BY AMP INCORPORATED. ALL RIGHTS RESERVED.

LOC	DIST	REVISIONS					
		P	LTR	DESCRIPTION	DATE	DWN	APVD
G	16		0	INITIAL RELEASE	03/07/96	KW	JK
			A	REV PER ECN #0K50-0015-96	09/23/96	KW	JK



184189-1
 PART NUMBER

<small>THIS DRAWING IS A CONTROLLED DOCUMENT FOR AMP INCORPORATED. IT IS SUBJECT TO CHANGE AND THE CONTROLLING ENGINEERING ORGANIZATION SHOULD BE CONTACTED FOR THE LATEST REVISION.</small>		DWN	K. WISE	03/07/96	AMP Incorporated Harrisburg, PA 17105-3608	
DIMENSIONS: mm		CHK	J. KUNKLE	03/07/96		
		APVD	J. KUNKLE	03/07/96		
TOLERANCES UNLESS OTHERWISE SPECIFIED: 0 PLC ±- 1 PLC ±0.3 2 PLC ±- 3 PLC ±- 4 PLC ±- ANGLES ±- FINISH BLACK		PRODUCT SPEC	NAME			END CAP HSG, SSC, 3 POSN B KEY
MATERIAL PBT, 15% GLASS FILLED		APPLICATION SPEC	-		SIZE	A3
		WEIGHT	-		CAGE CODE	00779
		CUSTOMER DRAWING			DRAWING NO	C-184189
					SCALE	2:1
					SHEET	1 OF 1
					REV	A