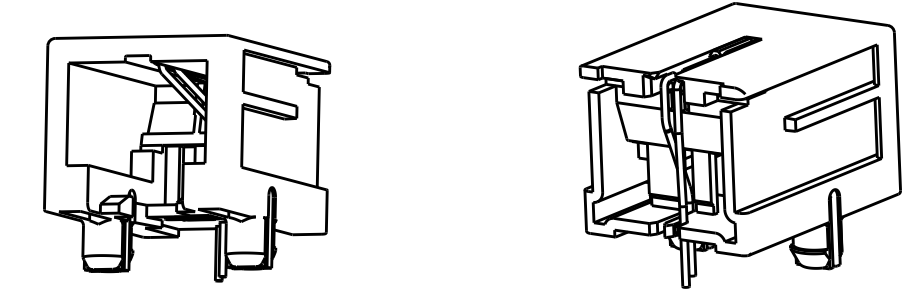
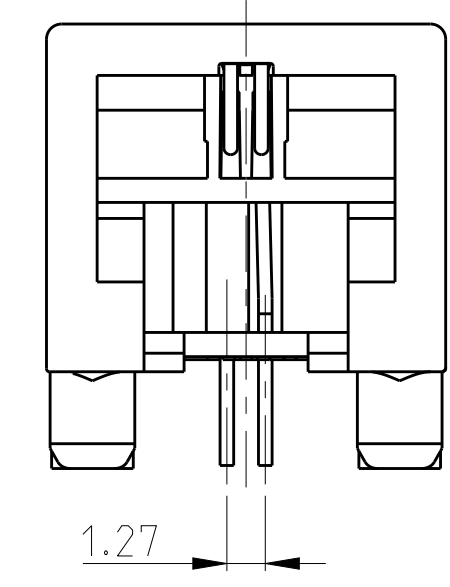
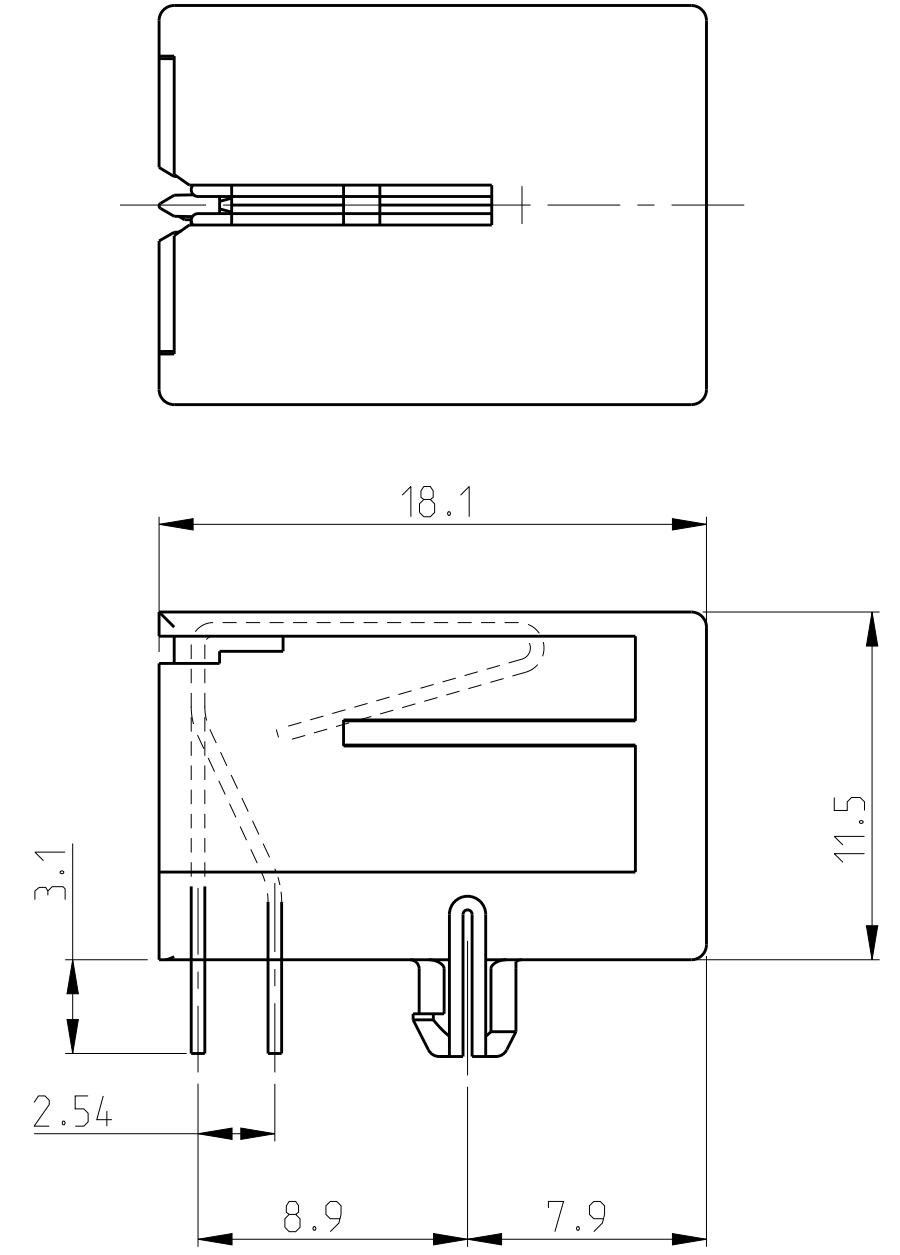
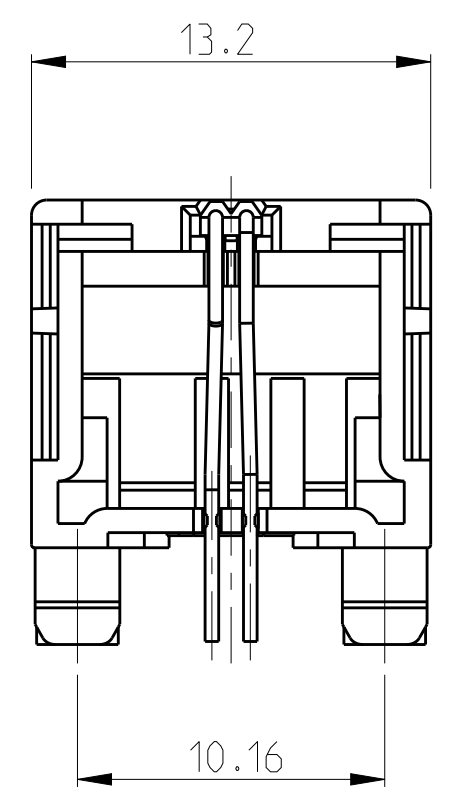
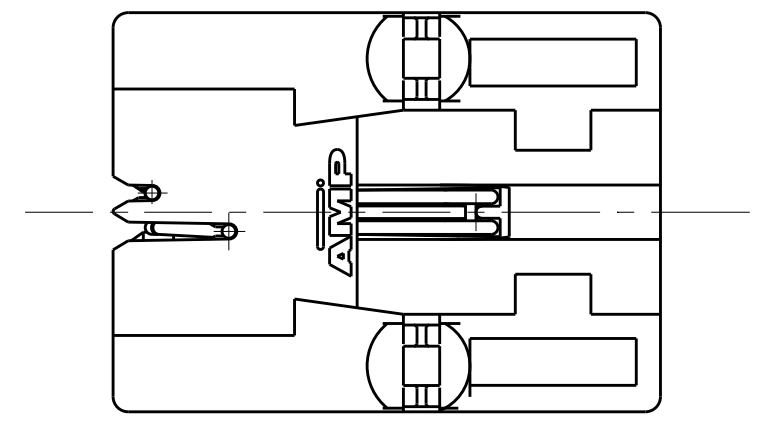
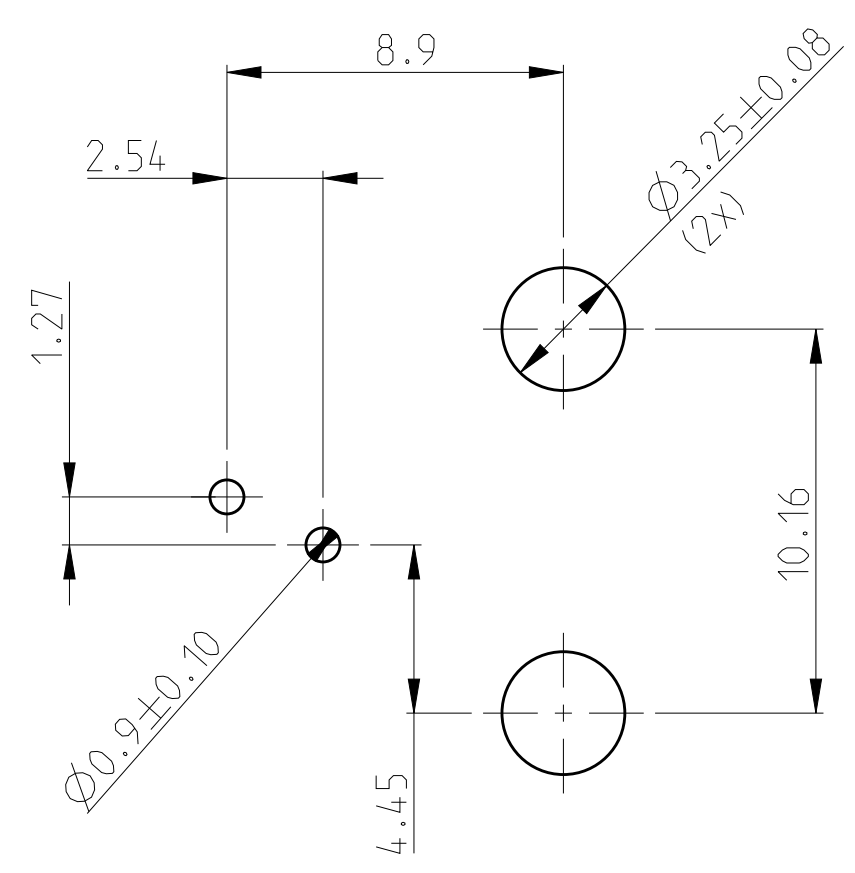


THIS DRAWING IS UNPUBLISHED. RELEASED FOR PUBLICATION
 © COPYRIGHT - TE CONNECTIVITY ALL RIGHTS RESERVED.

LOC	DIST	REVISIONS			
P	LTR	DESCRIPTION	DATE	DWN	APVD
IR	-	D	ECO-14-018192	27FEB2020	IT SH



- 1 FOR APPLICATION INFORMATION SEE TE SPEC. 114-19019.
- 2 FOR PERFORMANCE REQUIREMENTS SEE TE SPEC. 108-19064.
- 3 TOLERANCES UNLESS OTHERWISE SPECIFIED: ± 0,15mm.



OBSELETE

PACKAGING	REMARKS	FINISH	MATERIAL	P/N
TAPE MOUNTED 800 PCS/REEL		SAME AS -2		1857936-4
TAPE MOUNTED 800 PCS/REEL		IN CONTACT AREA: 1.27 μ MIN. NICKEL 0.15 μ MIN. GOLD FLASH SOLDER ZONES: SAME AS -2	HOUSING COLOR BLACK PBT, UL 94 V-0	1857936-3
TRAY PACKED 240 PCS/TRAY	6 POS/ 2 CONTACTS	OVERALL: Ni 1.27 μ MIN. ALL OVER THE CONTACTS SOLDER ZONE: Sn 2.5 μ MIN. ON THE SOLDER ZONE OF THE CONTACT MATING ZONE: PLATING CONFIRMS TO PRODUCT REQUIREMENTS AS PER SPECIFICATION 108-19064	CONTACT INSERT: PBT, UL 94 V-0 CONTACTS: Ph-BRONZE	1857936-2
TAPE MOUNTED 800 PCS/REEL		SAME AS -2		1857936-1

PRINTED CIRCUIT BOARD LAYOUT (6 POS/2 CONTACTS)

[VIEW SHOWN IS CIRCUIT (NON-COMPONENT) SIDE OF BOARD]
 PRINTED CIRCUIT BOARD THICKNESS: 1,6mm NOMINAL.
 TOLERANCES UNLESS OTHERWISE SPECIFIED: ± 0,05

THIS DRAWING IS A CONTROLLED DOCUMENT.

DWN: Shrivathsa 29 Aug 2006	TE Connectivity
CHK: Premijith 29 Aug 2006	
APVD: M. Oppers	NAME: MODULAR JACK, SIDE ENTRY, 6/2 FOR PRINTED CIRCUIT BOARD
PRODUCT SPEC: 108-19064	SIZE: A2
APPLICATION SPEC: 114-19019	CAGE CODE: 00779
WEIGHT: -	DRAWING NO: C-1857936
CUSTOMER DRAWING	RESTRICTED TO: -
	SCALE: 1:1
	SHEET: 1 OF 1
	REV: D