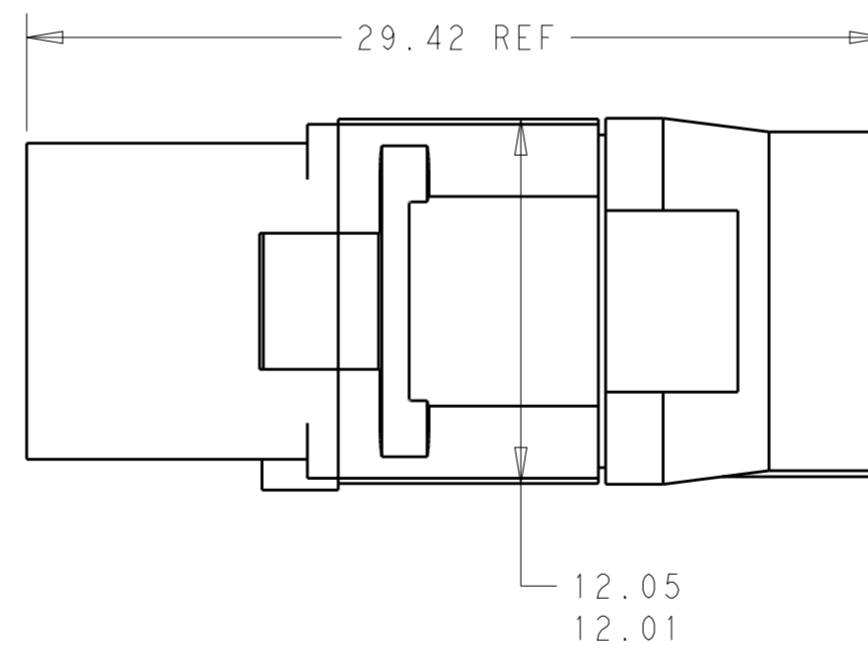
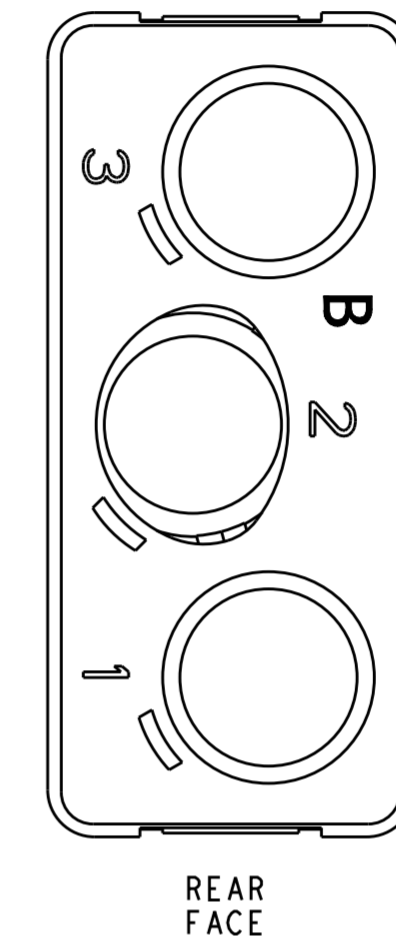
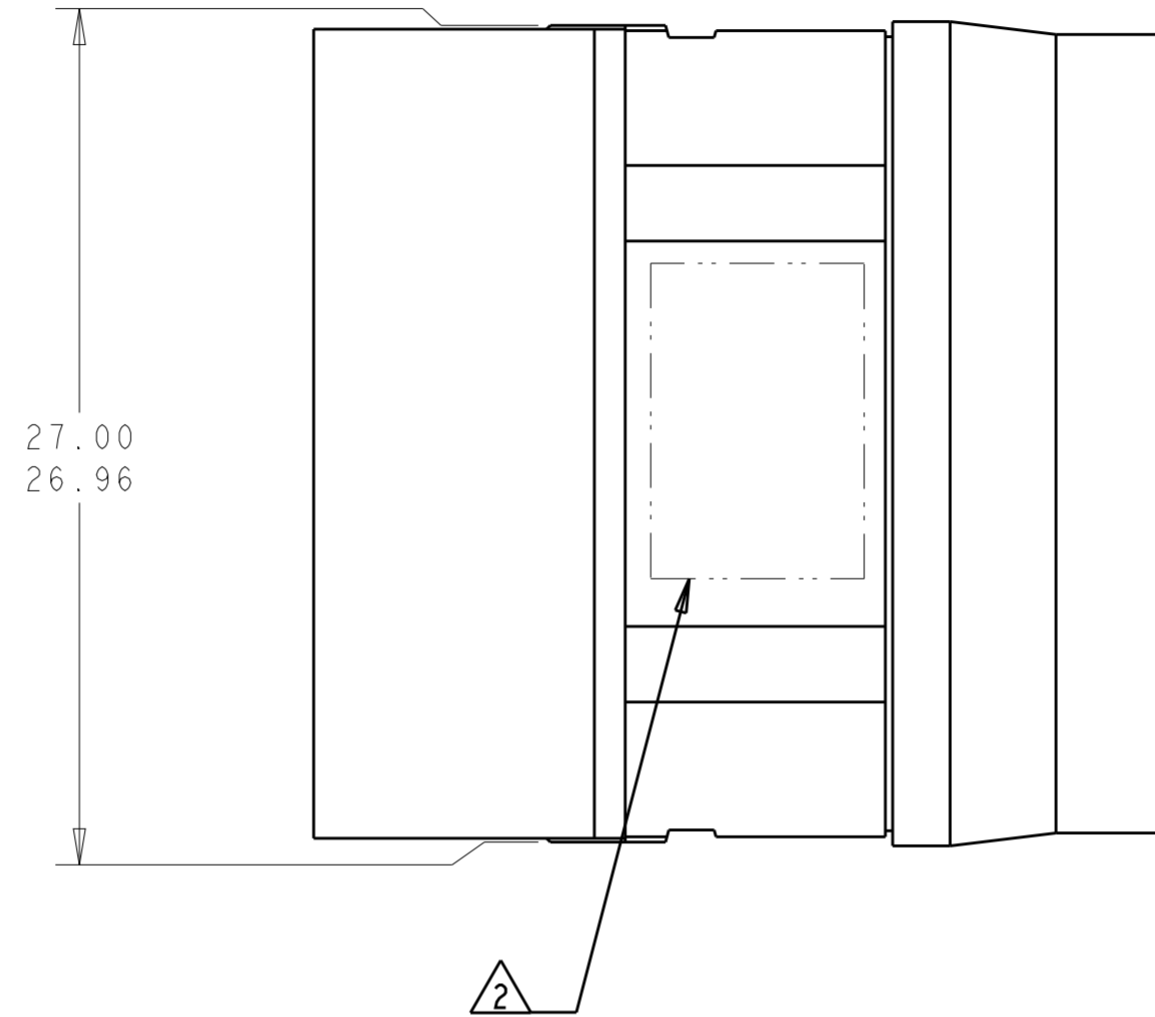
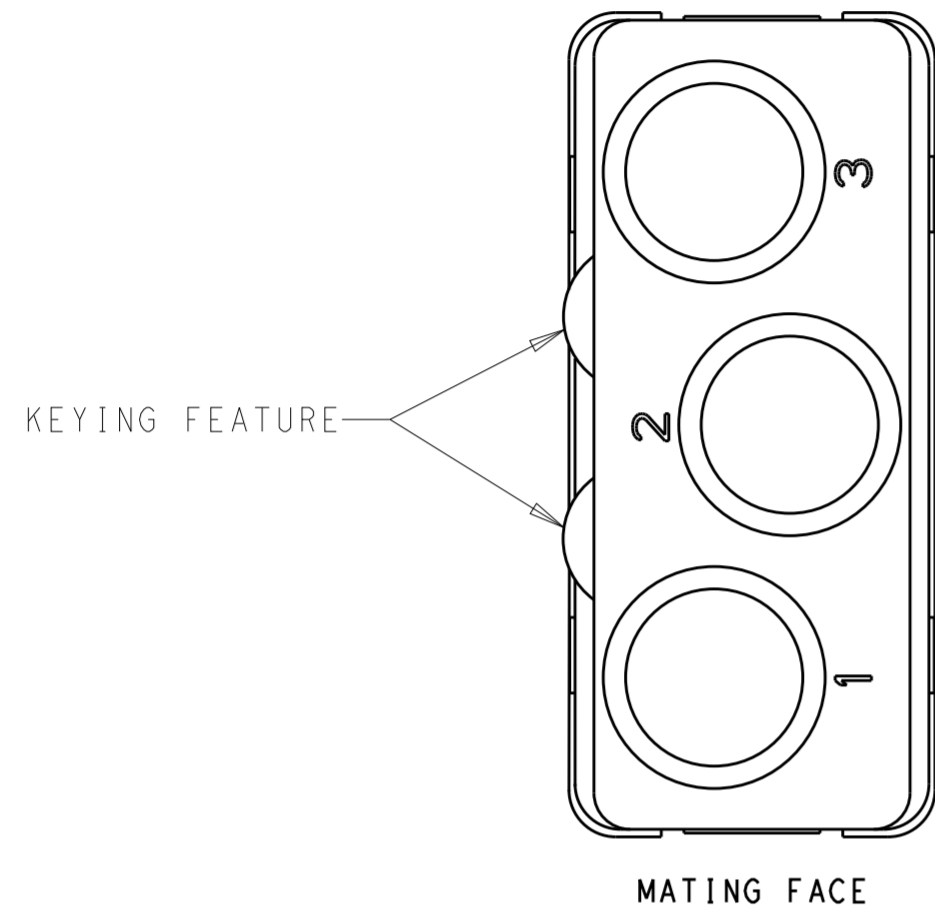


THIS DRAWING IS UNPUBLISHED. RELEASED FOR PUBLICATION
 © COPYRIGHT - BY - ALL RIGHTS RESERVED.

REVISIONS				
P	LTR	DESCRIPTION	DATE	APVD
A		REV PER ECO 14-002245	19DEC2013	CT KH



- 1 MATERIALS:
 FRONT & REAR INSULATORS: HIGH TEMP THERMOPLASTIC OR THERMOSET EPOXY PER ASTM D5948
 CONTACT RETENTION CLIPS: COPPER ALLOY PER ASTM B194 OR STAINLESS STEEL PER ASTM A666
 REAR GROMMET: FLUOROSILICONE ELASTOMER PER MIL-R-25988 B, EXCEPT 4.6.6.1
- 2 TE LOGO, PART NO AND DATE CODE (YY WW) MARKED IN THIS AREA. (TE PART NUMBER MAY BE MARKED EITHER ON INSULATOR OR GROMMET)
3. DESCRIPTIVE PART NO.: GPRBE303SB
 THIS INSERT CONTAINS 3 CAVITIES FOR SIZE 8 QUADRAX SOCKET CONTACTS
4. THIS PRODUCT IS SOLD BY TE CONNECTIVITY UNDER A LICENSE FROM RADIAL SA.

1877700-1
 PART NO.

THIS DRAWING IS A CONTROLLED DOCUMENT.		DWN C.C. THOMAS 19DEC2013	TE Connectivity															
DIMENSIONS: mm		CHK K. HOGAN 12-19-13																
TOLERANCES UNLESS OTHERWISE SPECIFIED:		APVD K. HOGAN 12-19-13	NAME INSERT ASSEMBLY, SOCKET, ARR 303, KEY B, GPRB, ENVIRONMENTAL															
<table border="1"> <tr><td>0 PLC</td><td>±</td></tr> <tr><td>1 PLC</td><td>±</td></tr> <tr><td>2 PLC</td><td>±</td></tr> <tr><td>3 PLC</td><td>±</td></tr> <tr><td>4 PLC</td><td>±</td></tr> <tr><td>ANGLES</td><td>±</td></tr> <tr><td>FINISH</td><td>±</td></tr> </table>		0 PLC	±	1 PLC	±	2 PLC	±	3 PLC	±	4 PLC	±	ANGLES	±	FINISH	±	PRODUCT SPEC -	SIZE A2	
0 PLC	±																	
1 PLC	±																	
2 PLC	±																	
3 PLC	±																	
4 PLC	±																	
ANGLES	±																	
FINISH	±																	
MATERIAL		APPLICATION SPEC -	CAGE CODE -	DRAWING NO G-1877700														
		WEIGHT -	RESTRICTED TO -	SCALE 4:1														
		Customer Drawing	SHEET 1 OF 1	REV A														