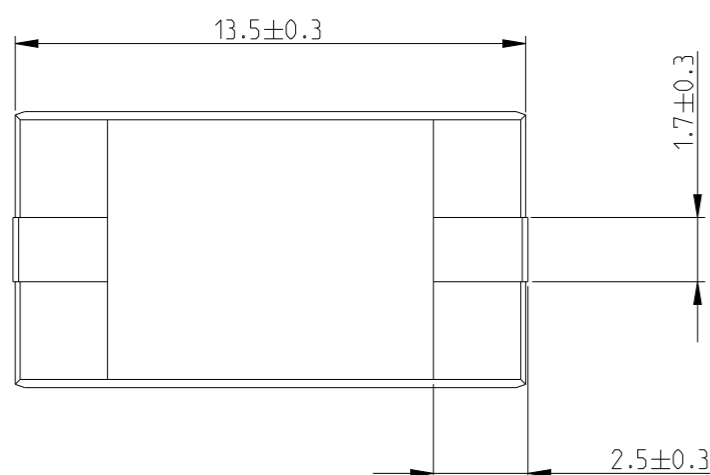
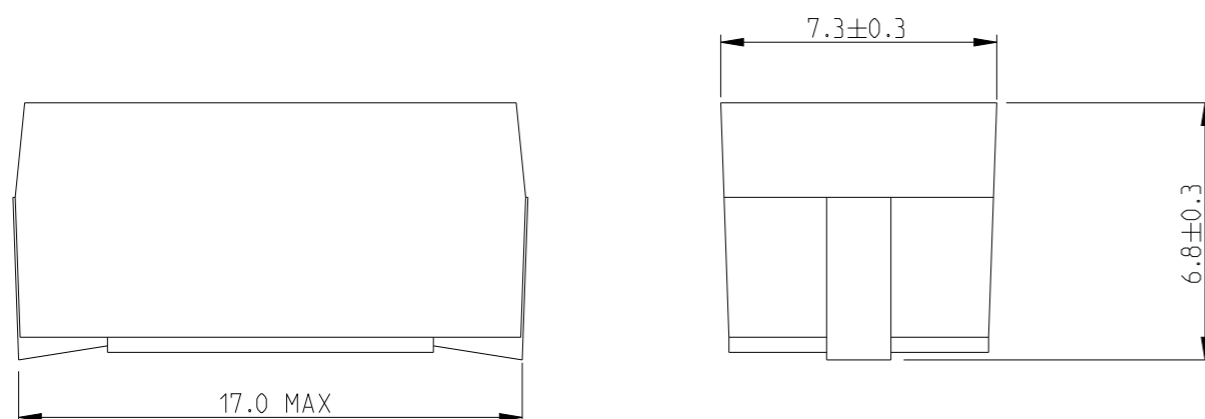
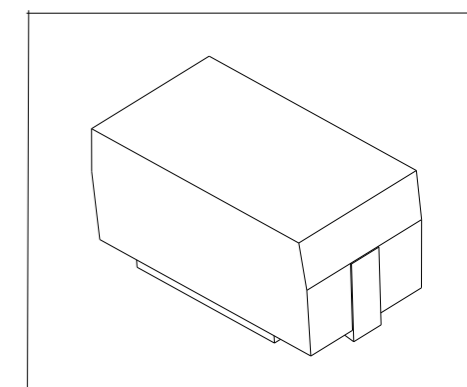


P	LTR	DESCRIPTION	DATE	DWN	APVD
	BA	NEW RELEASE	30AUG2010	PT	St.P
	BA1	SCHEDULE ADDED AND LAND PATTERN UPDATED	31OCT2023	DM	AP

FOR FURTHER INFORMATION SEE DATA SHEET FOR SERIES SM - SMD MOULDED POWER RESISTOR



RECOMMENDED LAND PATTERN




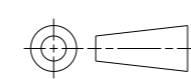
THIS DRAWING IS A CONTROLLED DOCUMENT.		DWN	30AUG2010		
		CHK	30AUG2010		
		APVD	30AUG2010		
		PRODUCT SPEC			
DIMENSIONS: mm		TOLERANCES UNLESS OTHERWISE SPECIFIED:		NAME SMD MOULDED POWER RESISTORS TYPE SMW5 5% SERIES	
		0 PLC	±0.2	SIZE	
		1 PLC	±0.1	CAGE CODE	
		2 PLC	±	DRAWING NO	
		3 PLC	±	RESTRICTED TO	
MATERIAL		4 PLC	±	A3 00779 C-1879233	
		ANGLES	±	SCALE 5:1 SHEET 1 OF 3	
		FINISH	±5°	REV BA1	
				CUSTOMER DRAWING	

REVISIONS

P	LTR	DESCRIPTION	DATE	DWN	APVD
	-	SEE SHEET 1	-	-	-

SCHEDULE			
TCPN	CATALOGUE NUMBER	PART DESCRIPTION	PART STATUS
1879233-1	SMW 5R10JT	SMW 5 R10 5%	PRODUCTION
1879233-2	SMW 5R11JT	SMW 5 R11 5%	PRODUCTION
1879233-3	SMW 5R12JT	SMW 5 R12 5%	PRODUCTION
1879233-4	SMW 5R13JT	SMW 5 R13 5%	PRODUCTION
1879233-5	SMW 5R15JT	SMW 5 R15 5%	PRODUCTION
1879233-6	SMW 5R16JT	SMW 5 R16 5%	PRODUCTION
1879233-7	SMW 5R18JT	SMW 5 R18 5%	PRODUCTION
1879233-8	SMW 5R20JT	SMW 5 R20 5%	PRODUCTION
1879233-9	SMW 5R22JT	SMW 5 R22 5%	PRODUCTION
1-1879233-0	SMW 5R24JT	SMW 5 R24 5%	PRODUCTION
1-1879233-1	SMW 5R27JT	SMW 5 R27 5%	PRODUCTION
1-1879233-2	SMW 5R30JT	SMW 5 R30 5%	PRODUCTION
1-1879233-3	SMW 5R33JT	SMW 5 R33 5%	PRODUCTION
1-1879233-4	SMW 5R36JT	SMW 5 R36 5%	PRODUCTION
1-1879233-5	SMW 5R39JT	SMW 5 R39 5%	PRODUCTION
1-1879233-6	SMW 5R43JT	SMW 5 R43 5%	PRODUCTION
1-1879233-7	SMW 5R47JT	SMW 5 R47 5%	PRODUCTION
1-1879233-8	SMW 5R51JT	SMW 5 R51 5%	PRODUCTION
1-1879233-9	SMW 5R56JT	SMW 5 R56 5%	PRODUCTION
2-1879233-0	SMW 5R62JT	SMW 5 R62 5%	PRODUCTION
2-1879233-1	SMW 5R68JT	SMW 5 R68 5%	PRODUCTION
2-1879233-2	SMW 5R75JT	SMW 5 R75 5%	PRODUCTION
2-1879233-3	SMW 5R82JT	SMW 5 R82 5%	PRODUCTION
2-1879233-4	SMW 5R91JT	SMW 5 R91 5%	PRODUCTION
2-1879233-5	SMW 51R0JT	SMW 5 1R0 5%	PRODUCTION
2-1879233-6	SMW 51R1JT	SMW 5 1R1 5%	PRODUCTION
2-1879233-7	SMW 51R2JT	SMW 5 1R2 5%	PRODUCTION
2-1879233-8	SMW 51R3JT	SMW 5 1R3 5%	PRODUCTION
2-1879233-9	SMW 51R5JT	SMW 5 1R5 5%	PRODUCTION
3-1879233-0	SMW 51R6JT	SMW 5 1R6 5%	PRODUCTION


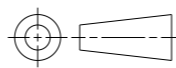
SCHEDULE			
TCPN	CATALOGUE NUMBER	PART DESCRIPTION	PART STATUS
3-1879233-1	SMW 51R8JT	SMW 5 1R8 5%	PRODUCTION
3-1879233-2	SMW 52R0JT	SMW 5 2R0 5%	PRODUCTION
3-1879233-3	SMW 52R2JT	SMW 5 2R2 5%	PRODUCTION
3-1879233-4	SMW 52R4JT	SMW 5 2R4 5%	PRODUCTION
3-1879233-5	SMW 52R7JT	SMW 5 2R7 5%	PRODUCTION
3-1879233-6	SMW 53R0JT	SMW 5 3R0 5%	PRODUCTION
3-1879233-7	SMW 53R3JT	SMW 5 3R3 5%	PRODUCTION
3-1879233-8	SMW 53R6JT	SMW 5 3R6 5%	PRODUCTION
3-1879233-9	SMW 53R9JT	SMW 5 3R9 5%	PRODUCTION
4-1879233-0	SMW 54R3JT	SMW 5 4R3 5%	PRODUCTION
4-1879233-1	SMW 54R7JT	SMW 5 4R7 5%	PRODUCTION
4-1879233-2	SMW 55R1JT	SMW 5 5R1 5%	PRODUCTION
4-1879233-3	SMW 55R6JT	SMW 5 5R6 5%	PRODUCTION
4-1879233-4	SMW 56R2JT	SMW 5 6R2 5%	PRODUCTION
4-1879233-5	SMW 56R8JT	SMW 5 6R8 5%	PRODUCTION
4-1879233-6	SMW 57R5JT	SMW 5 7R5 5%	PRODUCTION
4-1879233-7	SMW 58R2JT	SMW 5 8R2 5%	PRODUCTION
4-1879233-8	SMW 59R1JT	SMW 5 9R1 5%	PRODUCTION
4-1879233-9	SMW 510RJT	SMW 5 10R 5%	PRODUCTION
5-1879233-0	SMW 511RJT	SMW 5 11R 5%	PRODUCTION
5-1879233-1	SMW 512RJT	SMW 5 12R 5%	PRODUCTION
5-1879233-2	SMW 513RJT	SMW 5 13R 5%	PRODUCTION
5-1879233-3	SMW 515RJT	SMW 5 15R 5%	PRODUCTION
5-1879233-4	SMW 516RJT	SMW 5 16R 5%	PRODUCTION
5-1879233-5	SMW 518RJT	SMW 5 18R 5%	PRODUCTION
5-1879233-6	SMW 520RJT	SMW 5 20R 5%	PRODUCTION
5-1879233-7	SMW 522RJT	SMW 5 22R 5%	PRODUCTION
5-1879233-8	SMW 524RJT	SMW 5 24R 5%	PRODUCTION
5-1879233-9	SMW 527RJT	SMW 5 27R 5%	PRODUCTION
6-1879233-0	SMW 530RJT	SMW 5 30R 5%	PRODUCTION

THIS DRAWING IS A CONTROLLED DOCUMENT.		DWN PARUSURAM.T 30AUG2010	 TE Connectivity NAME SMD MOULDED POWER RESISTORS TYPE SMW 5 5% SERIES		
DIMENSIONS: mm		CHK ALLAN.P 30AUG2010			
TOLERANCES UNLESS OTHERWISE SPECIFIED:		APVD STEPHEN.P 30AUG2010			
		PRODUCT SPEC -	SIZE A3		
MATERIAL -		FINISH -	APPLICATION SPEC -	CAGE CODE 00779	DRAWING NO C-1879233
		WEIGHT -	RESTRICTED TO -		
CUSTOMER DRAWING			SCALE 5:1	SHEET 2 OF 3	REV BA1

REVISIONS

P	LTR	DESCRIPTION	DATE	DWN	APVD
-		SEE SHEET 1	-	-	-

SCHEDULE			
TCPN	CATALOGUE NUMBER	PART DESCRIPTION	PART STATUS
6-1879233-1	SMW 533RJT	SMW 5 33R 5%	PRODUCTION
6-1879233-2	SMW 536RJT	SMW 5 36R 5%	PRODUCTION
6-1879233-3	SMW 539RJT	SMW 5 39R 5%	PRODUCTION
6-1879233-4	SMW 543RJT	SMW 5 43R 5%	PRODUCTION
6-1879233-5	SMW 547RJT	SMW 5 47R 5%	PRODUCTION
6-1879233-6	SMW 551RJT	SMW 5 51R 5%	PRODUCTION
6-1879233-7	SMW 556RJT	SMW 5 56R 5%	PRODUCTION
6-1879233-8	SMW 562RJT	SMW 5 62R 5%	PRODUCTION
6-1879233-9	SMW 568RJT	SMW 5 68R 5%	PRODUCTION
7-1879233-0	SMW 575RJT	SMW 5 75R 5%	PRODUCTION
7-1879233-1	SMW 582RJT	SMW 5 82R 5%	PRODUCTION
7-1879233-2	SMW 591RJT	SMW 5 91R 5%	PRODUCTION
7-1879233-3	SMW 5100RJT	SMW 5 100R 5%	PRODUCTION
7-1879233-4	SMW 5110RJT	SMW 5 110R 5%	PRODUCTION
7-1879233-5	SMW 5120RJT	SMW 5 120R 5%	PRODUCTION
7-1879233-6	SMW 5130RJT	SMW 5 130R 5%	PRODUCTION
7-1879233-7	SMW 5150RJT	SMW 5 150R 5%	PRODUCTION
7-1879233-8	SMW 5160RJT	SMW 5 160R 5%	PRODUCTION
7-1879233-9	SMW 5180RJT	SMW 5 180R 5%	PRODUCTION
8-1879233-0	SMW 5200RJT	SMW 5 200R 5%	PRODUCTION
8-1879233-1	SMW 5220RJT	SMW 5 220R 5%	PRODUCTION
8-1879233-2	SMW 5240RJT	SMW 5 240R 5%	PRODUCTION
8-1879233-3	SMW 5270RJT	SMW 5 270R 5%	PRODUCTION
8-1879233-4	SMW 5300RJT	SMW 5 300R 5%	PRODUCTION
8-1879233-5	SMW 5330RJT	SMW 5 330R 5%	PRODUCTION
8-1879233-6	SMW 5360RJT	SMW 5 360R 5%	PRODUCTION
8-1879233-7	SMW 5390RJT	SMW 5 390R 5%	PRODUCTION
8-1879233-8	SMW 5430RJT	SMW 5 430R 5%	PRODUCTION
8-1879233-9	SMW 5470RJT	SMW 5 470R 5%	PRODUCTION
9-1879233-0	SMW 5R051JT	SMW 5 R051 5%	PRODUCTION

THIS DRAWING IS A CONTROLLED DOCUMENT.		DWN PARUSURAM.T 30AUG2010	 TE Connectivity NAME SMD MOULDED POWER RESISTORS TYPE SMW 5 5% SERIES		
DIMENSIONS: mm		CHK ALLAN.P 30AUG2010			APVD STEPHEN.P 30AUG2010
		PRODUCT SPEC - APPLICATION SPEC - WEIGHT -			
TOLERANCES UNLESS OTHERWISE SPECIFIED:		0 PLC ±0.2 1 PLC ±0.1 2 PLC ± 3 PLC ± 4 PLC ± ANGLES ±5° FINISH -		RESTRICTED TO -	
MATERIAL -		SIZE A3		CAGE CODE 00779	
		DRAWING NO C-1879233		SCALE 5:1	
		SHEET 3 OF 3		REV BA1	
		CUSTOMER DRAWING			