

4

3

2

1

THIS DRAWING IS UNPUBLISHED.

RELEASED FOR PUBLICATION

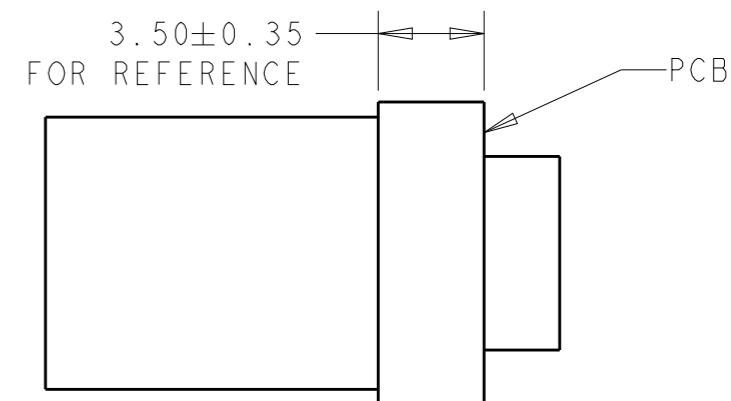
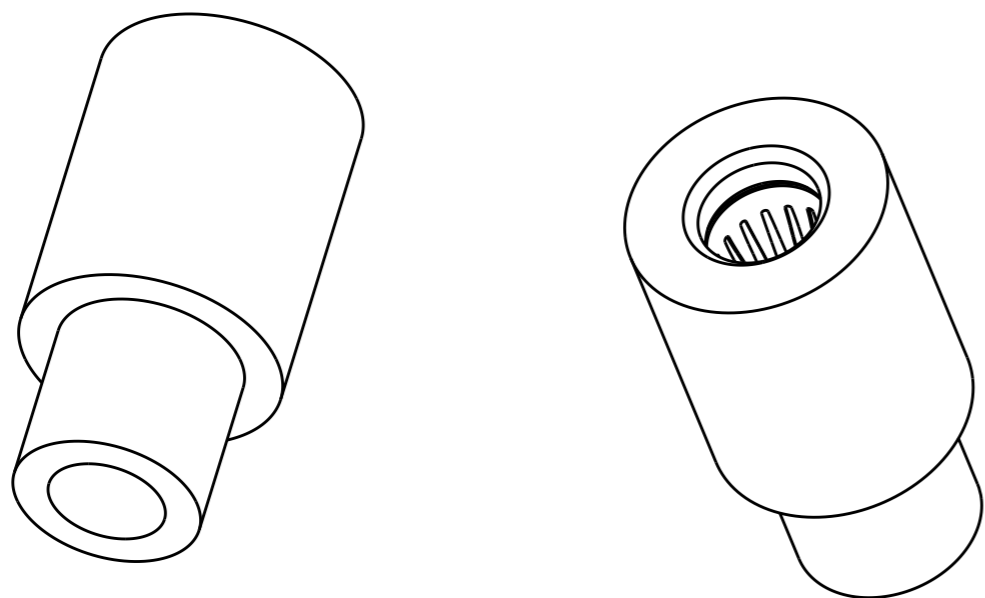
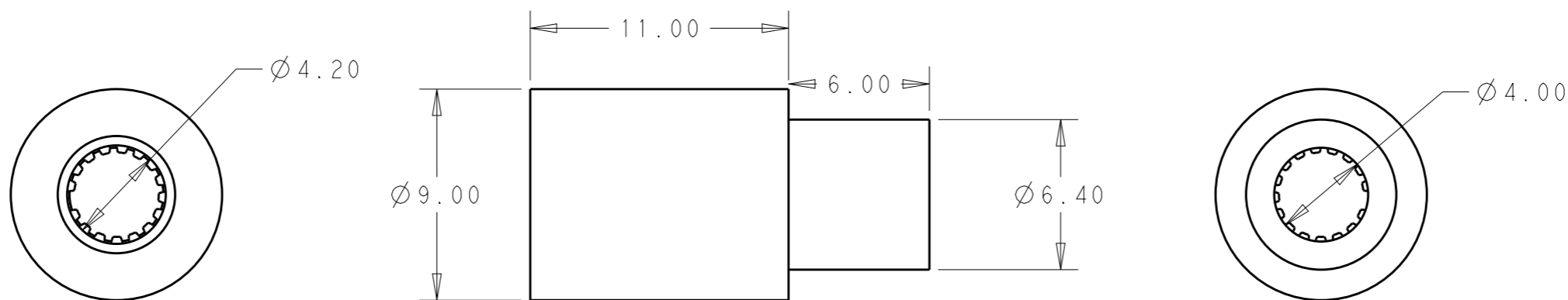
© COPYRIGHT -

ALL RIGHTS RESERVED.

LOC GS DIST -

REVISIONS


P	LTR	DESCRIPTION	DATE	DWN	APVD
	1	PROPOSAL DRAWING	15AUG2013	OL	SZ
	2	REVISED PER REQUEST	11SEP2013	OL	SZ



THIS PRINT IS
PRELIMINARY
 UNQUALIFIED PRODUCT
 CONTACT PRODUCT ENGINEERING
 BEFORE USING THIS PRINT

AS SHOWN	1892842-1
DESCRIPTION	PART NUMBER

- MATERIAL:
 SOCKET BODY: COPPER ALLOY
 SOCKET CONTACT: COPPER ALLOY
- FINISH:
 SOCKET BODY: SILVER PLATE OVER NICKEL PLATE
 SOCKET CONTACT: GOLD PLATED OVER NICKEL
- PCB
 RECOMMENDED PCB HOLE AFTER PLATING:
 6.55±0.05

THIS DRAWING IS A CONTROLLED DOCUMENT.		DWN ORANDO LI 18AUG2013	 TE Connectivity	
DIMENSIONS: MM		CHK		
TOLERANCES UNLESS OTHERWISE SPECIFIED:		APVD	NAME CONTACT, SOCKET DESIGNED FOR 3.6MM DIA	
0 PLC ±-		PRODUCT SPEC 108-***	SIZE A3	
1 PLC ±.5		APPLICATION SPEC 114-***	CAGE CODE -	DRAWING NO. 1892842
2 PLC ±.30		WEIGHT -	RESTRICTED TO -	
3 PLC ±-		Customer Drawing	SCALE 4	SHEET 1 OF 1
4 PLC ±-				REV 2
ANGLES ±5				
FINISH -				