

PART NUMBER	REVISION	DESCRIPTION
3-1893238-5	F	Mini Applicator-LP
7-1893238-5	B	Applicator-Drawer kit + Crimpers
7-1893238-7	B	Crimp Tooling Kit-LP

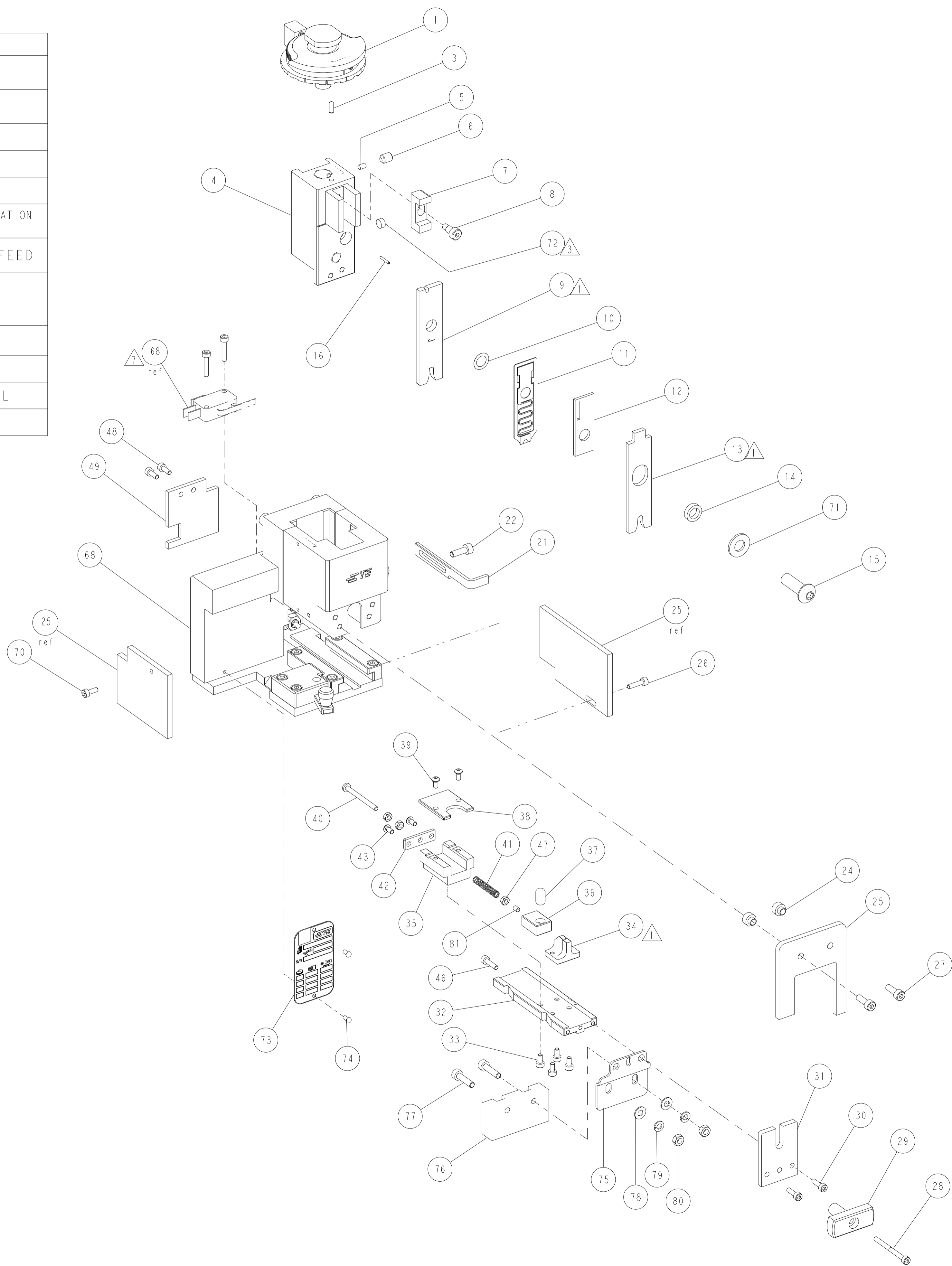
OBSOLETE

REVISIONS					
P	LTN	DESCRIPTION	DATE	OWN	APVD
C		ECO-13-015102	26SEP2016	EAO	CCL
D		ECO-14-008675	16JUN2014	EAO	CCL
E		ECO-15-000703	16JAN2015	DLO	CCL
F		REVISED -35, PER ECR-22-133715	24MAR2022	GK	DLO

CRIMP DATA

TERMINAL DESCRIPTION			
RING TONGUE			
WIRE ADJUSTMENT DISC POSITION	CRIMP HEIGHT	WIRE SIZE	
A0	2.40 MM [.095 IN]	2.50 MM ²	
A9	2.28 MM [.090 IN]	2.00 MM ²	
B7	2.16 MM [.085 IN]	1.50 MM ²	
WIRE STRIP LENGTH 6.00 MM ± 0.50 MM		TERMINAL APPLICATION SPECIFICATION 114-18022	
CRIMPER	CRIMP WIDTH	CRIMPER PROFILE	
WIRE CRIMPER	3.30 mm [.130 IN]	F	
INS. CRIMPER	3.94 mm [.155 IN]	Ov	
INSULATION RANGE 2.1 - 3.1 MM		WIRE RANGE >1.0 - 2.50 MM ²	
		GAUGE 1707132-1	
TERMINALS APPLIED:			
TERMINAL	SEAL	TERMINAL	SEAL
964198	-	-	-

- NOTES:
- 1 RECOMMENDED SPARE PARTS
 - 2 GREASE BEARING SURFACES LIGHTLY
 - 3 MAGNET, ITEM 6, MUST BE ORIENTED CORRECTLY IN ORDER TO PROPERLY ACTUATE THE COUNTER.
 - 4 UNLESS SPECIFIED OTHERWISE TORQUE VALUES SHALL BE USED PER DOCUMENT, 101-35000.
 - 5- APPLICATOR TO BE USED ON BENCH TERMINATORS ONLY.
 - 6- RECOMMENDED TERMINATORS:
G11 TERMINATOR FOR LOOSE PIECE APPLICATORS PN 2374600-1 OR 2374600-2 (W/ COM).
G11+ TERMINATOR FOR LOOSE PIECE APPLICATORS PN 2844810-1 OR 2844810-2 (W/ COM).
 - 7 WHEN WORKING IN THE G11 OR G11+ TERMINATOR THE INSTALLATION OF MICROSWITCH (ASSEMBLED IN APPLICATOR BASIC ASSY, ITEM #68) IN THE TERMINATOR IS NOT NEEDED. THE INSTALLATION OF THE MICROSWITCH IS MANDATORY ONLY FOR TERMINATORS THAT DO NOT FEATURE THE MAGNETIC ACTUATOR ITEM #76.



-	-	1	18032-1	SCR, SET, FLT PNT, M3 X 5.0	81
-	-	2	5018030-2	NUT, HEX, REG, RoHS, M4	80
-	-	2	1-18026-0	WASHER, SPRG LOCK, REG M4	79
-	-	2	1-18028-2	WASHER, FLAT, REG M4	78
-	-	2	2168083-8	SCR, SKT HD CAP, RoHS, M4 X 16	77
-	-	1	2168489-1	ACTUATOR, SPARE, MC1	76
-	-	1	2844821-1	BRACKET, ACTUATOR, MINI-SIZE	75
-	-	2	2168078-1	SCREW, DRIVE, RH, RoHS, 2 x .188	74
-	-	1	2119740-1	TAG, IDENTIFICATION	73
-	-	1	994969-1	MAGNET, RARE EARTH, HIGH ENERGY	72
-	-	1	1-18028-0	WASHER, FLAT, REG M8	71
-	-	1	18023-3	SCR, SKT HD CAP M3 X 8.0	70
-	-	1	2077852-1	APPLICATOR BASIC ASSEMBLY, MINI-LP	68
-	-	1	2076888-1	REAR APPLICATOR GUARD	49
-	-	2	18023-3	SCR, SKT HD CAP M3 X 8.0	48
-	-	3	18030-1	NUT, HEX, REG M3	47
-	-	1	18023-5	SCR, SKT HD CAP M3 X 12.0	46
-	-	2	18024-1	SCR, BTN SKT HD CAP (M3 X 6.0)	43
-	-	1	1707957-2	REAR COVER	42
-	-	1	1-22279-1	SPRING, COMPRESSION	41
-	-	1	4-18019-4	SCR, PAN SLT HD MACH M3 X 35.0	40
-	-	2	18024-1	SCR, BTN SKT HD CAP (M3 X 6.0)	39
-	-	1	2076240-1	COVER, TERMINAL SUPPORT	38
-	-	1	1707366-6	PIN DOWEL	37
-	-	1	2076239-1	SLIDING TERMINAL SUPPORT	36
-	-	1	2076219-1	SUPPORT, SLIDING BLOCK	35
1	1	1	1707820-7	ANVIL, SPECIAL	34
-	-	4	18023-2	SCR, SKT HD CAP M3 X 6.0	33
-	-	1	1707825-7	GUIDE BLOCK	32
-	-	1	624887-4	APPLICATOR GUARD	31
-	-	2	18023-4	SCR, SKT HD CAP M3 X 10.0	30
-	-	1	1707779-1	KNOB	29
-	-	1	9-18023-4	SCR, SKT HD CAP M3 X 35.0	28
-	-	2	1-18023-2	SCR, SKT HD CAP M4 X 12.0	27
-	-	1	18023-5	SCR, SKT HD CAP M3 X 12.0	26
-	-	1	1707831-5	APPLICATOR GUARD	25
-	-	2	1707368-1	SPACER, APPL. GUARD	24
-	-	2	1-18023-2	SCR, SKT HD CAP M4 X 12.0	22
-	-	1	571417-1	STRIPPER	21
-	-	1	1-993111-0	PIN, SLOTTED SPRING 1.5 X 10.0	16
-	-	1	2-18024-6	SCR, BTN SKT HD CAP (M8 X 25.0)	15
-	-	1	2-238011-1	BLOCK, CRIMPER SPACER	14
1	1	1	3-573447-7	INSULATION CRIMPER (OV)	13
-	-	1	1-690407-7	SPACER, CRIMPER	12
-	-	1	624511-3	MOVING SPACER	11
-	-	1	2076147-1	WASHER, SPACER	10
1	1	1	3-571140-8	WIRE CRIMPER	9
-	-	1	1707121-2	SCREW, SOCKET HD SHOULDER	8
-	-	1	690402-1	BLOCK, INSULATION ADJUSTMENT	7
-	-	1	18032-8	SCR, SET, FLT PNT, M6 X 8.0	6
-	-	1	690191-1	PLUG, NYLON	5
-	-	1	1707115-1	RAM, MINI APPLICATOR	4
-	-	1	1-992946-4	PIN, DOWEL 3 X 8	3
-	-	1	2077830-1	WIRE DISC, FINE ADJUST.	1
-77	-75	-35	PART NO	DESCRIPTION	ITEM NO

THIS DRAWING IS A CONTROLLED DOCUMENT.

APVD: C. LIMA	DATE: 06AUG2009	NAME: LOOSE PIECE MINI APPLICATOR
CHK: J. JODAR	DATE: 06AUG2009	SIZE: A
CHK: M. MENEGHINI	DATE: 06AUG2009	CAGE CODE: 00779
DATE: 06AUG2009	DRAWING NO: 1893238	SHEET 1 OF 1
SCALE: 3:5	REV: F	

TE Connectivity