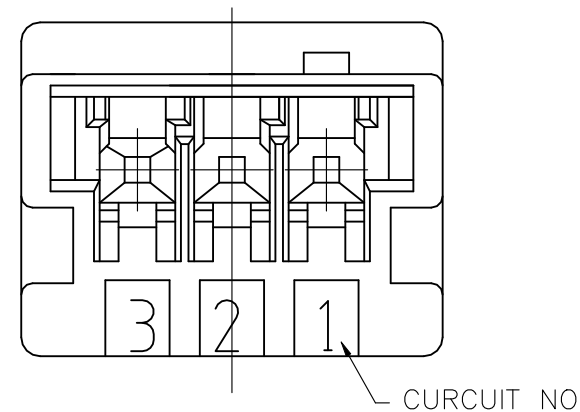
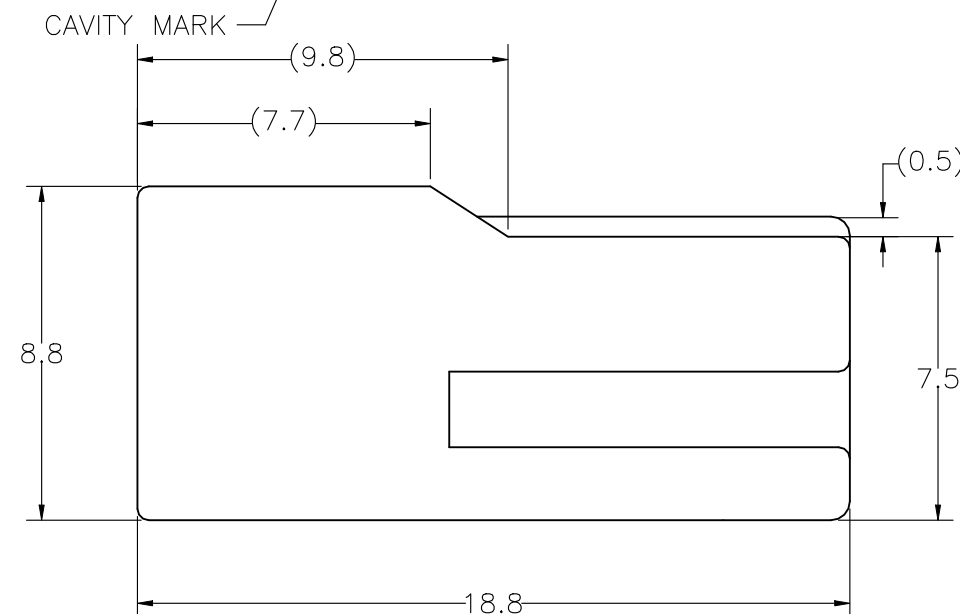
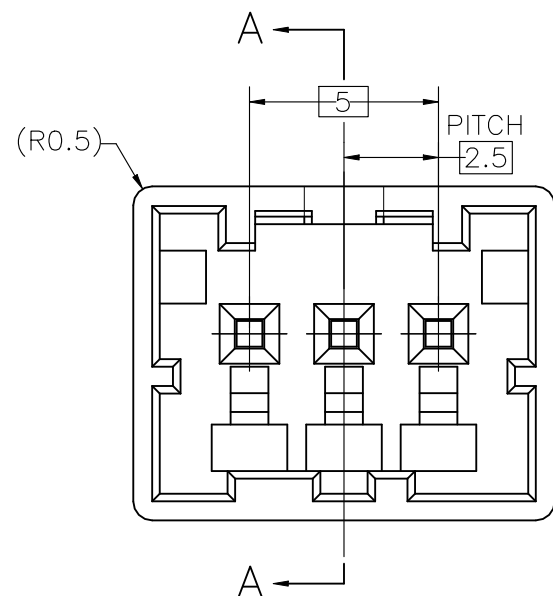
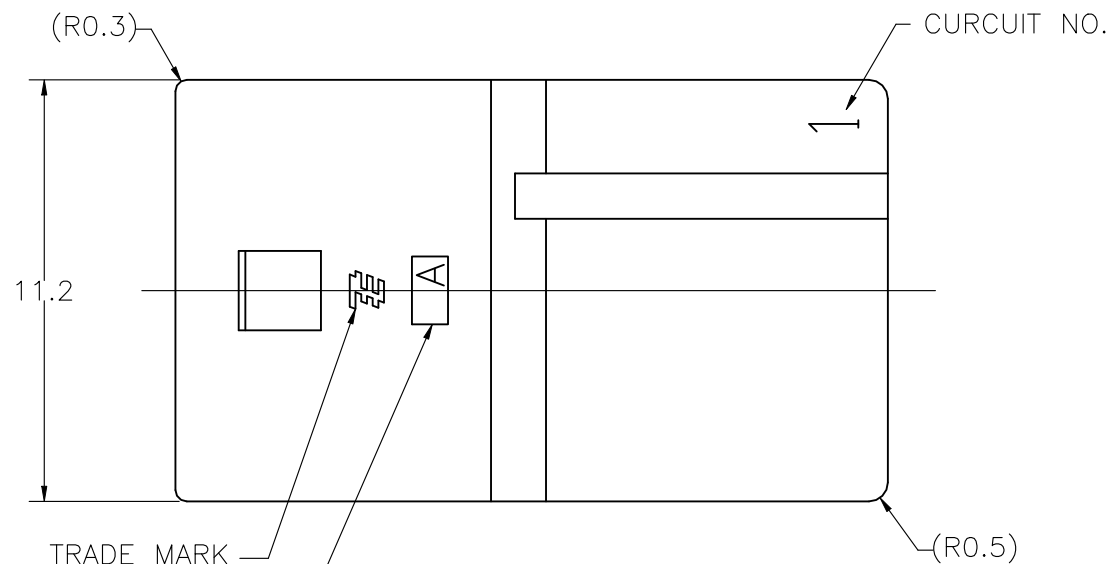
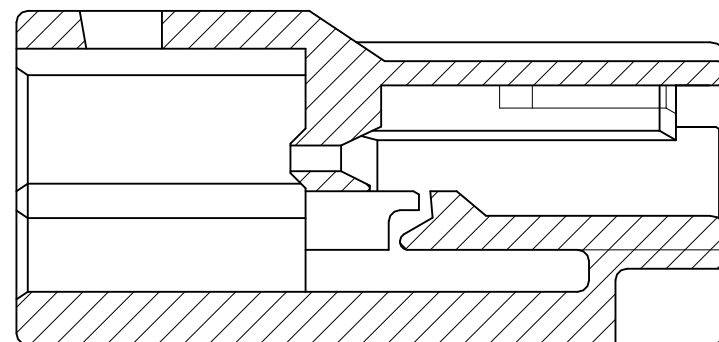
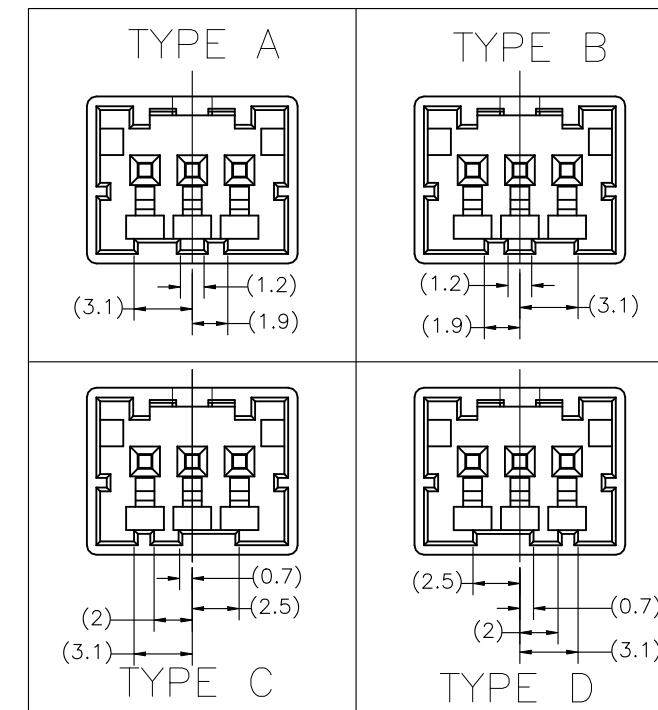


REVISIONS

P	LTR	DESCRIPTION	DATE	DWN	APVD
	C	REVISED PER ECR-22-153759	17JUL2023	MV	DZ



TYPE OF KEYING



断面 A-A  
SECT A-A

- 注記
- 1. 一般公差: ±0.3
  - △ 材料PBTガラス強化(UL94V-0)
  - △ かん合相手製品型番  
プラグハウジング: TABLE参照のこと  
タブコンタクト: 917764, 917765

- NOTE
- 1. GENERAL TOLERANCE: ±0.3
  - △ MATERIAL: PBT GLASS FILLED (UL94V-0)
  - △ MATING CONN.P/N  
PLUG HOUSING: SEE TABLE  
TAB CONTACT: 917764, 917765

3-1903389-4	TYPE D	YELLOW 黄色	3-1903392-4
2-1903389-3	TYPE C	BLUE 青色	2-1903392-3
1-1903389-2	TYPE B	RED 赤色	1-1903392-2
1903389-1	TYPE A	NATURAL 自然色	1903392-1
かん合相手型番 △ MATING HSG P/N	キーイング形状 TYPE OF KEYING	色調 COLOR	型番 PART NUMBER

THIS DRAWING IS A CONTROLLED DOCUMENT.		DWN J.SATO 31OCT05	<b>STE</b> TE Connectivity	
DIMENSIONS: 単位: 耗 mm		CHK T.HATANO 31OCT05		
TOLERANCES UNLESS OTHERWISE SPECIFIED: 一般公差		APVD N.YAMASAKI 31OCT05	NAME 名称 GRACE INERTIA CONNECTOR 2.5 W CAP HOUSING 3P	
0 PLC ± 1 PLC ± 2 PLC ± 3 PLC ± 4 PLC ± ANGLES ±		PRODUCT SPEC 製品規格 108-78350	SIZE	CAGE CODE
MATERIAL 材料 SEE NOTE △		FINISH 仕上	DRAWING NO 番号 A300779	RESTRICTED TO
		WEIGHT 0.000000	C-1903392	
		RESTRICTED CUSTOMER		SCALE 尺度 5:1
		SHEET 1 OF 1		REV C