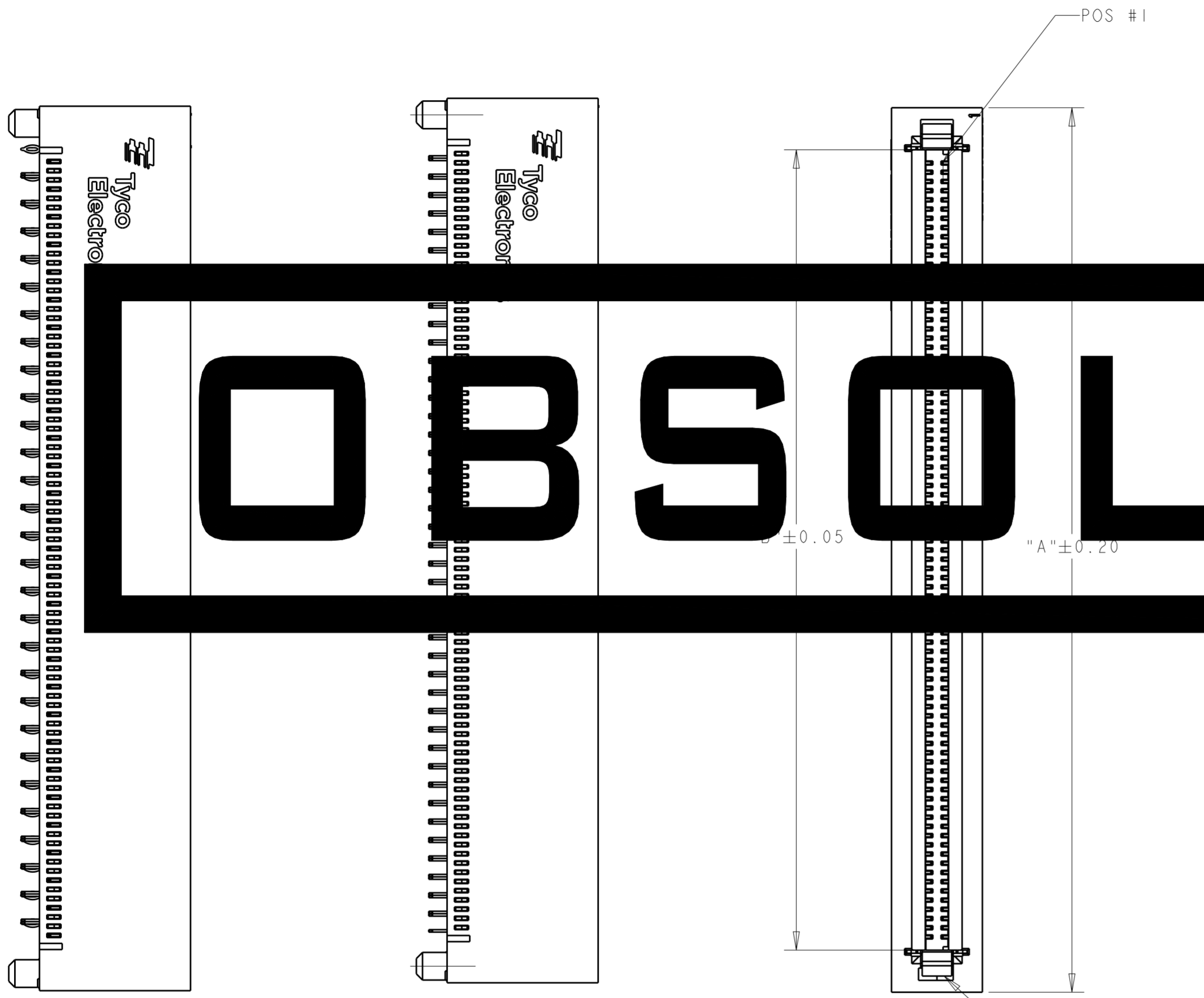


THIS DRAWING IS UNPUBLISHED. RELEASED FOR PUBLICATION 20  
 © COPYRIGHT 20 BY TYCO ELECTRONICS CORPORATION. ALL RIGHTS RESERVED.

LOC		DIST		REVISIONS			
P	LTR	DESCRIPTION	DATE	DWN	APVD		
CC	00						
	A	RELEASED	25NOV08	KT	PR		
	B	REV PER ECO-09-006618	24MAR2009	CR	PR		
	C	REV PER ECR-15-004753	13JUL2015	F.L	F.Y		



1 PCB HOLE DIMENSIONS:  
 DRILLED HOLE = 0.64±0.02 mm  
 FINISHED HOLE = 0.55 mm REF  
 Cu THICKNESS = 25-50 um WITH EITHER  
 PLATING THICKNESS:  
 HASL Sn Pb = 4-10 um OR  
 IMMERSION Sn = MIN 0.5 um OR  
 OSP = 0.2-0.5 um OR  
 IMMERSION Au/Ni = 0.5-1.2 um Au OVER 3.0-7.0 um Ni OR  
 IMMERSION Ag = 0.1 um MIN

CONTACTS- COPPER ALLOY  
 WEAR PLATE- STAINLESS STEEL  
 3 FINISH- MATING AREA- 0.76 um MIN GOLD OR  
 0.64 um MIN PALLADIUM-NICKEL OVER 1.27 um MIN NICKEL  
 COMPLIANT PIN AREA- 0.5 um MATTE TIN OVER 1.27 um  
 NICKEL

4 CONNECTOR MARKED WITH PART NUMBER AND DATE CODE.

5 DATUM AND BASIC DIMENSIONS ESTABLISHED BY CUSTOMER.

6 CONTACT AREA LUBRICATED WITH BELLCOS APPROVED LUBRICANT. TECHNICAL REFERENCE GROUP 17-CORE ISSUE 1, NOVEMBER 1995.

7 REFER TO TYCO ELECTRONICS APPLICATION SPECIFICATION 114-13180 FOR SPECIFIC APPLICATION RELATED INFORMATION.

8 FINISH- MATING AREA- 0.76 um MIN GOLD OR 0.64 um MIN PALLADIUM-NICKEL OVER 1.27 um MIN NICKEL  
 COMPLIANT PIN AREA- 0.5 um BRIGHT TIN-LEAD OVER 1.27 um NICKEL.

9 WEAR PLATE EXTENDS FROM TOP OF CONNECTOR TO BOTTOM OF SLOT AND IS USED TO ELIMINATE WEAR OF THE HOUSING CAUSED BY THE EDGE OF THE PCB CARD.

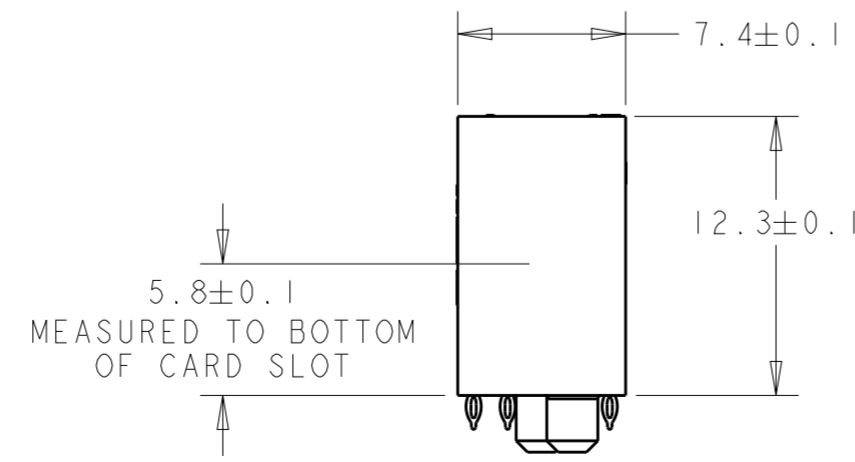
10 THESE 2 END HOLES ARE NOT REQUIRED ON 80 AND 140 POSITION PCB'S.

**OBSOLETE**

DIFFERENTIAL PAIR CONFIGURATION

INDIVIDUAL SIGNAL CONFIGURATION

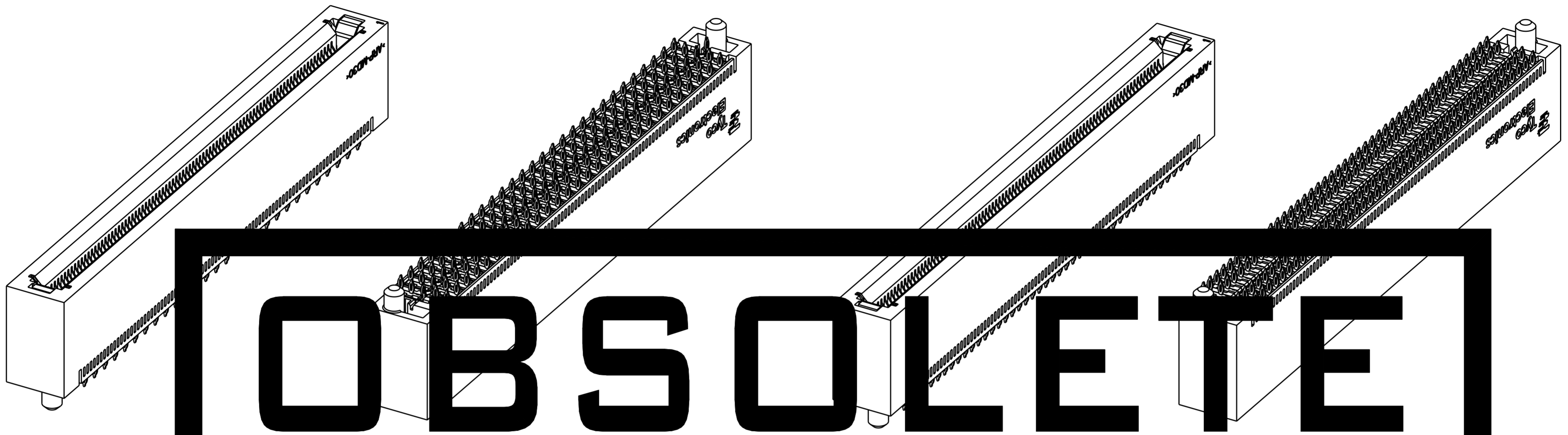
WEAR PLATE 9



THIS DRAWING IS A CONTROLLED DOCUMENT FOR TYCO ELECTRONICS CORPORATION. IT IS SUBJECT TO CHANGE AND THE CONTROLLING ENGINEERING ORGANIZATION SHOULD BE CONTACTED FOR THE LATEST REVISION.		DWN D. SZCZESNY	11 JAN 08	Tyco Electronics Harrisburg, PA 17105-3608	
DIMENSIONS: mm		CHK -	APVD -	NAME CARD EDGE CONNECTOR, VERTICAL 0.75 CENTERLINE	
TOLERANCES UNLESS OTHERWISE SPECIFIED: 0 PLC ±0.1 1 PLC ±0.1 2 PLC ±0.13 3 PLC ±0.013 4 PLC ±0.0001 ANGLES ±		PRODUCT SPEC 108-2254		SIZE A200779	
MATERIAL		APPLICATION SPEC 114-13180		DRAWING NO C-1934768	
		WEIGHT -		RESTRICTED TO -	
		CUSTOMER DRAWING		SCALE 3:1 SHEET 1 OF 4 REV C	

THIS DRAWING IS UNPUBLISHED. RELEASED FOR PUBLICATION 20  
 © COPYRIGHT 20 BY TYCO ELECTRONICS CORPORATION. ALL RIGHTS RESERVED.

LOC	DIST	REVISIONS					
CC	00	P	LTR	DESCRIPTION	DATE	DWN	APVD
		-		SEE SHEET 1			



2-DIFFERENTIAL PAIR CONFIGURATION

INDIVIDUAL SIGNAL CONFIGURATION

**OBSOLETE**

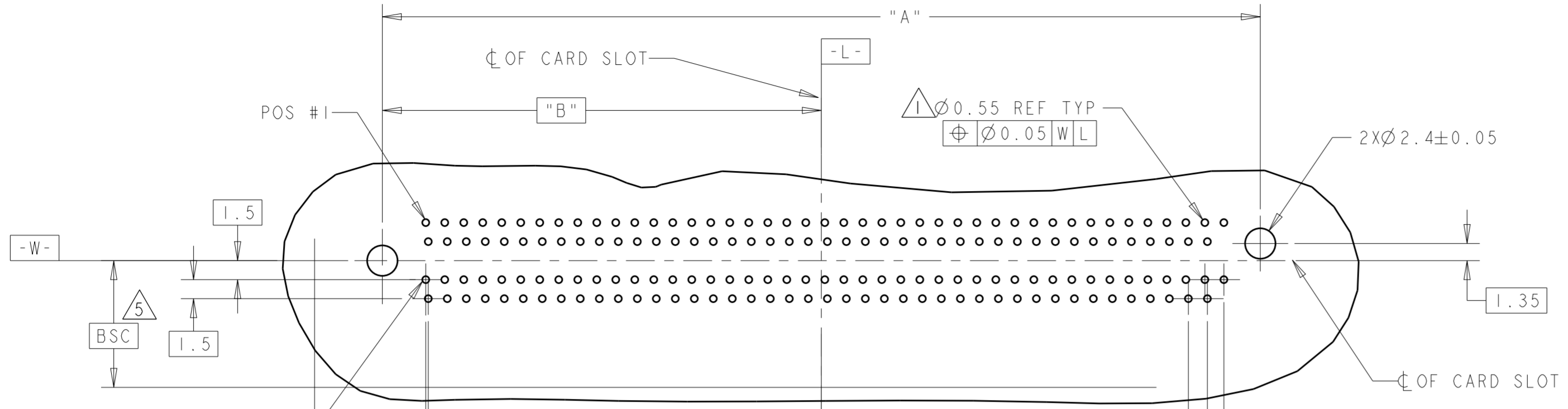
65.15	72.00	56	-	8	170	3-1934768-6
53.90	60.75	46	-	8	140	3-1934768-5
42.65	48.50	36	-	8	110	3-1934768-4
31.40	38.25	26	-	8	80	3-1934768-3
20.15	27.00	16	-	8	50	3-1934768-2
47.15	54.00	40	-	8	122	3-1934768-1
65.15	72.00	56	-	3	170	2-1934768-6
53.90	60.75	46	-	3	140	2-1934768-5
42.65	49.50	36	-	3	110	2-1934768-4
31.40	38.25	26	-	3	80	2-1934768-3
20.15	27.00	16	-	3	50	2-1934768-2
47.15	54.00	40	-	3	122	2-1934768-1
65.15	72.00	-	170	8	170	1-1934768-6
53.90	60.75	-	140	8	140	1-1934768-5
42.65	49.50	-	110	8	110	1-1934768-4
31.40	38.25	-	80	8	80	1-1934768-3
20.15	27.00	-	50	8	50	1-1934768-2
47.15	54.00	-	122	8	122	1-1934768-1
65.15	72.00	-	170	3	170	1934768-6
53.90	60.75	-	140	3	140	1934768-5
42.65	49.50	-	110	3	110	1934768-4
31.40	38.25	-	80	3	80	1934768-3
20.15	27.00	-	50	3	50	1934768-2
47.15	54.00	-	122	3	122	1934768-1
"B"	"A"	DIFFERENTIAL PAIR	SIGNALS	PLATING	POSITIONS	PART NUMBER

CUSTOM LOAD PATTERNS ARE AVAILABLE. CONTACT TYCO ELECTRONICS SALES.

THIS DRAWING IS A CONTROLLED DOCUMENT FOR TYCO ELECTRONICS CORPORATION. IT IS SUBJECT TO CHANGE AND THE CONTROLLING ENGINEERING ORGANIZATION SHOULD BE CONTACTED FOR THE LATEST REVISION.		DWN D. SZCZESNY	11 JAN 08	Tyco Electronics Harrisburg, PA 17105-3608	
DIMENSIONS: mm		CHK -	APVD -	NAME CARD EDGE CONNECTOR, VERTICAL 0.75 CENTERLINE	
TOLERANCES UNLESS OTHERWISE SPECIFIED: 0 PLC ±0.1 1 PLC ±0.1 2 PLC ±0.13 3 PLC ±0.013 4 PLC ±0.0001 ANGLES ±		PRODUCT SPEC 108-2254		SIZE 114-13180	
MATERIAL		WEIGHT -		CAGE CODE A200779	
FINISH		CUSTOMER DRAWING		DRAWING NO C-1934768	
		SCALE 3:1		RESTRICTED TO -	
		SHEET 2		OF 4	
				REV C	

THIS DRAWING IS UNPUBLISHED. RELEASED FOR PUBLICATION 20  
 © COPYRIGHT 20 BY TYCO ELECTRONICS CORPORATION. ALL RIGHTS RESERVED.

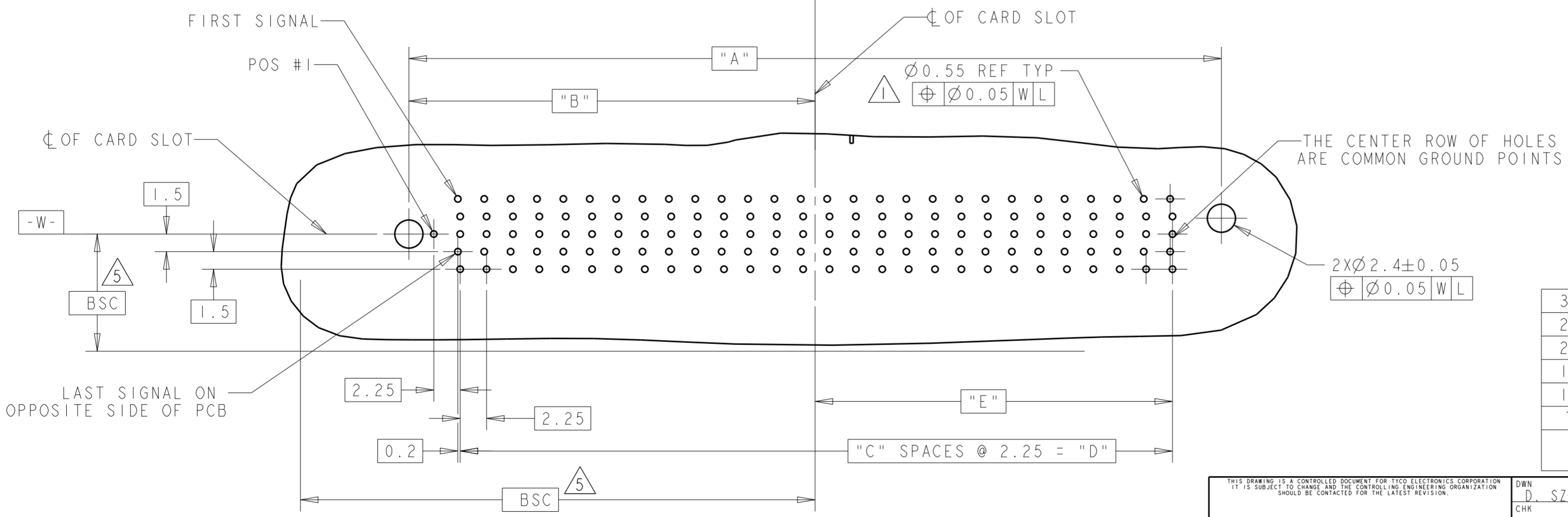
LOC	DIST	REVISIONS			
P	LTR	DESCRIPTION	DATE	DWN	APVD
CC	00	SEE SHEET 1	-	-	-



OBSOLETE

DIMENSIONS FOR INDIVIDUAL PCB LAYOUT

"E"	"D"	"C"	"B"	"A"	CONNECTOR SIZE
34.38	60.75	27	34.65	69.30	170
29.01	50.50	24	29.03	58.05	140
21.48	42.75	19	25.65	51.30	122
19.23	38.25	17	23.40	46.80	110
14.36	27.00	12	17.78	35.55	80
7.98	15.75	7	12.15	24.30	50



DIMENSIONS FOR DIFFERENTIAL PAIR PCB LAYOUT

"E"	"D"	"C"	"B"	"A"	CONNECTOR SIZE
30.48	60.75	27	34.65	69.30	170
24.86	49.50	22	29.03	58.05	140
21.48	42.75	19	25.65	51.30	122
19.23	38.25	17	23.40	46.80	110
13.61	27.00	12	17.78	35.55	80
7.98	15.75	7	12.15	24.30	50

RECOMMENDED PCB LAYOUT  
DIFFERENTIAL PAIR CONFIGURATION

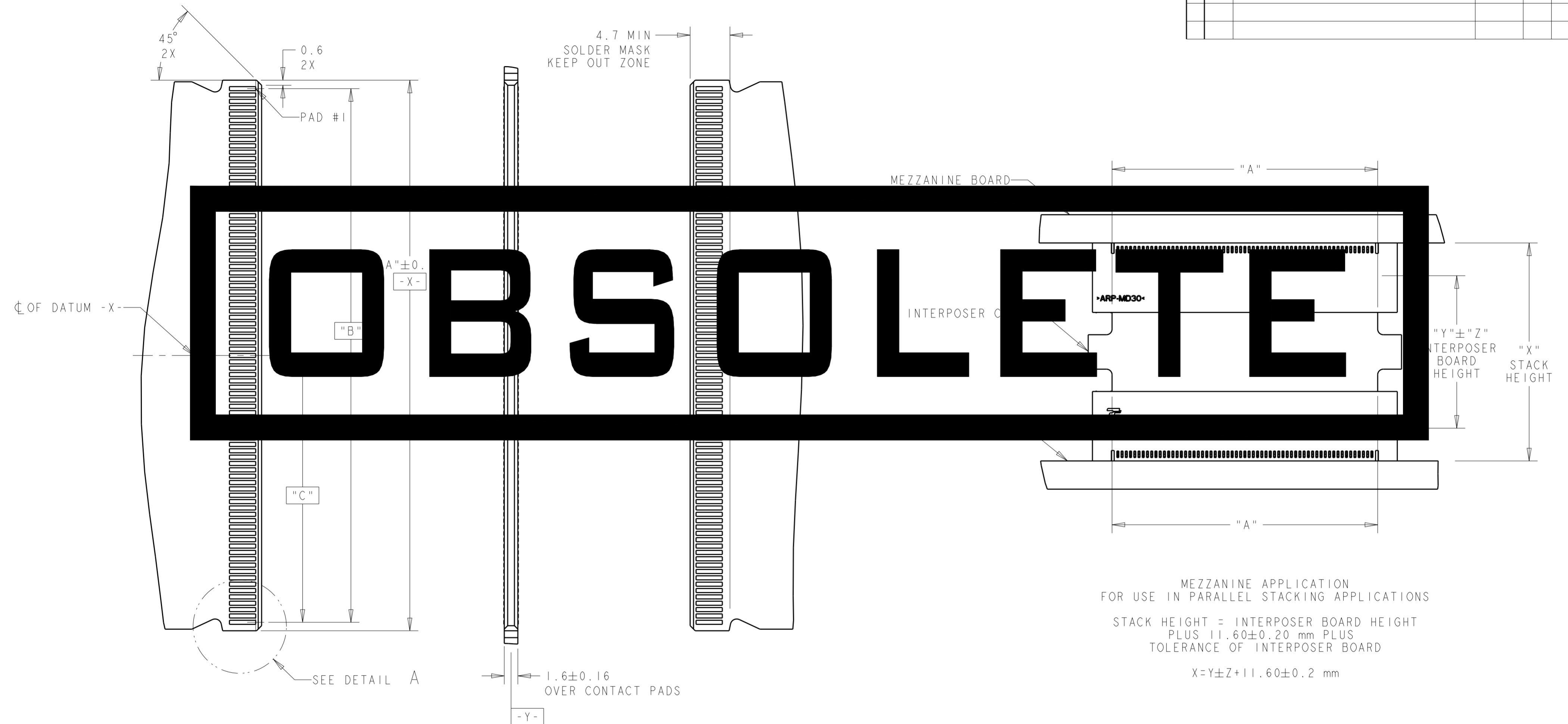
THIS DRAWING IS A CONTROLLED DOCUMENT FOR TYCO ELECTRONICS CORPORATION. IT IS SUBJECT TO CHANGE AND THE CONTROLLING ENGINEERING ORGANIZATION SHOULD BE CONTACTED FOR THE LATEST REVISION.

DIMENSIONS: mm		TOLERANCES UNLESS OTHERWISE SPECIFIED:		DWN: D. SZCZESNY	11 JAN 08
		0 PLC ±0.1	1 PLC ±0.1	CHK: -	
MATERIAL: -		2 PLC ±0.13	3 PLC ±0.013	APVD: -	
		4 PLC ±0.0001	ANGLES ±	PRODUCT SPEC: 108-2254	NAME: CARD EDGE CONNECTOR, VERTICAL 0.75 CENTERLINE
		FINISH: -		APPLICATION SPEC: 114-13180	SIZE: A2
				WEIGHT: -	CAGE CODE: 200779
				CUSTOMER DRAWING	DRAWING NO: C-1934768
				SCALE: 3:1	RESTRICTED TO: -
				SHEET 3 OF 4	REV C

Tyco Electronics  
Harrisburg, PA 17105-3608

THIS DRAWING IS UNPUBLISHED. RELEASED FOR PUBLICATION 20  
 © COPYRIGHT 20 BY TYCO ELECTRONICS CORPORATION. ALL RIGHTS RESERVED.

LOC	DIST	REVISIONS			
P	LTR	DESCRIPTION	DATE	DWN	APVD
CC	00	SEE SHEET 1	-	-	-

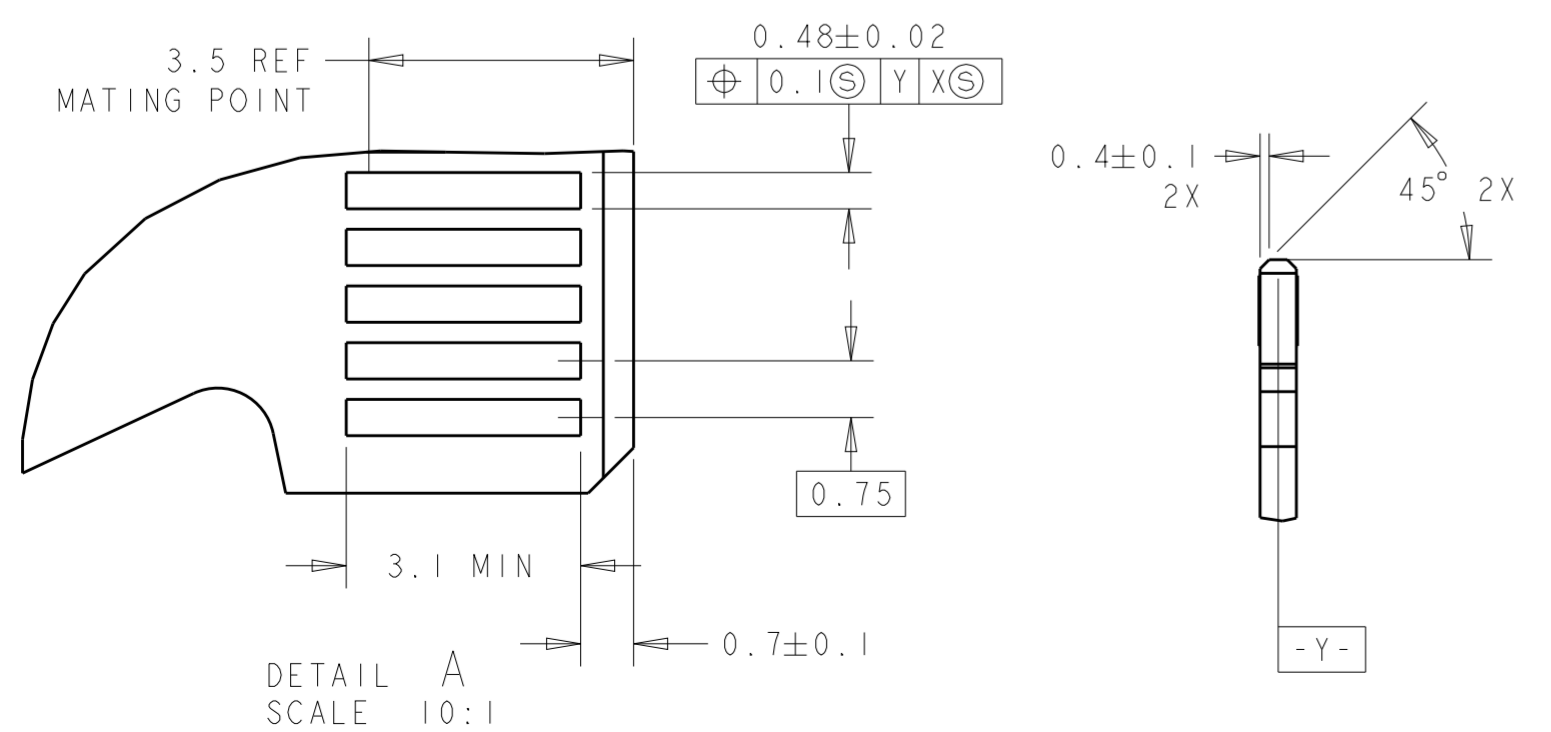


MEZZANINE APPLICATION  
 FOR USE IN PARALLEL STACKING APPLICATIONS

STACK HEIGHT = INTERPOSER BOARD HEIGHT  
 PLUS 11.60±0.20 mm PLUS  
 TOLERANCE OF INTERPOSER BOARD

$X = Y \pm Z + 11.60 \pm 0.2 \text{ mm}$

RECOMMENDED MATING  
 PCB LAYOUT



31.50	63.00	65.00	85	170
25.88	51.75	53.75	70	140
22.50	45.00	47.00	61	122
20.25	40.50	42.50	55	110
14.63	29.25	31.25	40	80
9.00	18.00	20.00	25	50
"C"	"B"	"A"	PADS PER SIDE	CONNECTOR SIZE

THIS DRAWING IS A CONTROLLED DOCUMENT FOR TYCO ELECTRONICS CORPORATION. IT IS SUBJECT TO CHANGE AND THE CONTROLLING ENGINEERING ORGANIZATION SHOULD BE CONTACTED FOR THE LATEST REVISION.		DWN D. SZCZESNY	11 JAN 08	Tyco Electronics Harrisburg, PA 17105-3608	
DIMENSIONS: mm		CHK -	APVD -	NAME CARD EDGE CONNECTOR, VERTICAL 0.75 CENTERLINE	
TOLERANCES UNLESS OTHERWISE SPECIFIED: 0 PLC ±0.1 1 PLC ±0.13 2 PLC ±0.13 3 PLC ±0.013 4 PLC ±0.0001 ANGLES ±		PRODUCT SPEC 108-2254		SIZE A200779	
MATERIAL		APPLICATION SPEC 114-13180		DRAWING NO C-1934768	
FINISH		WEIGHT -		RESTRICTED TO -	
CUSTOMER DRAWING				SCALE 3:1	SHEET 4 OF 4
				REV C	