

4

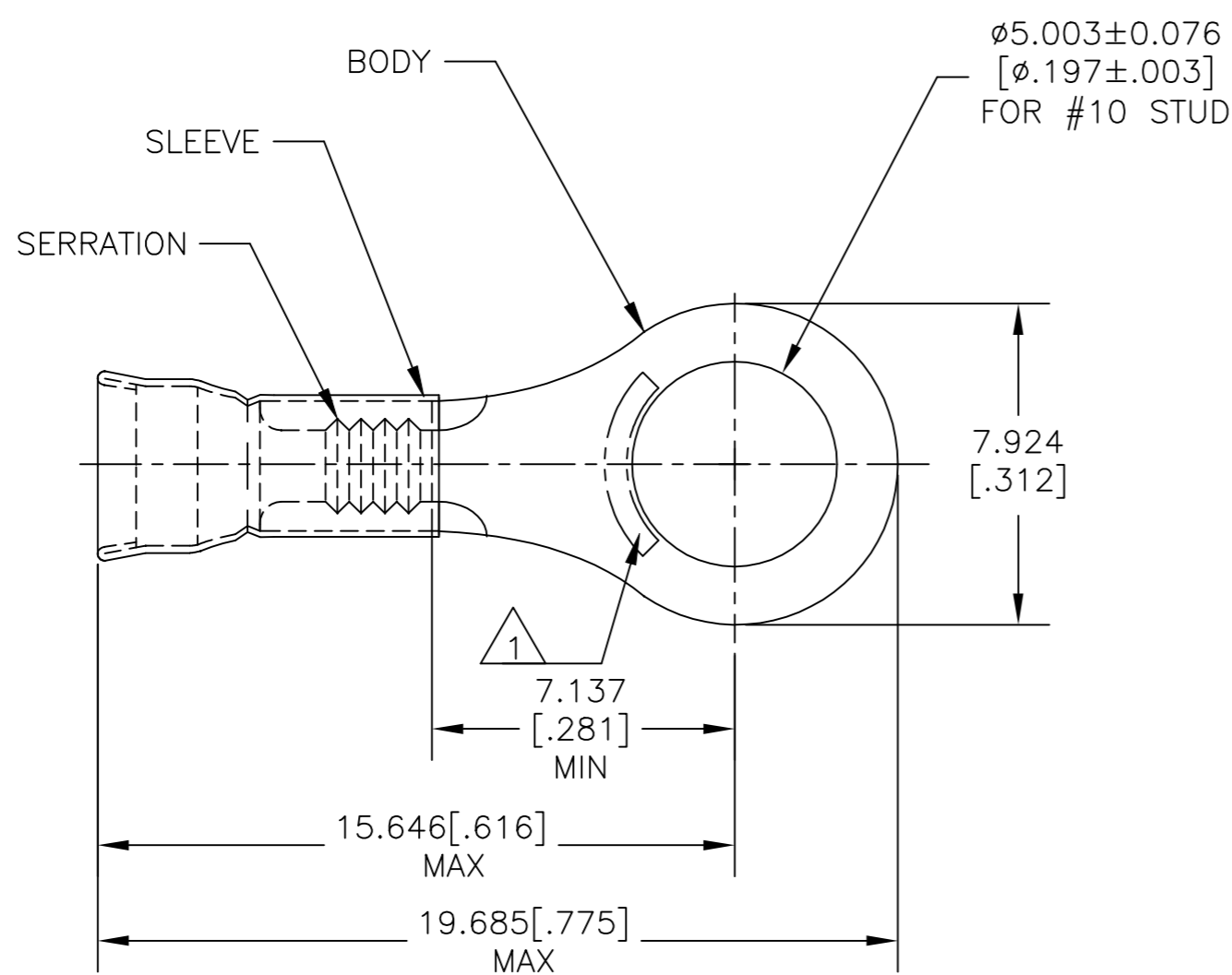
3

2

1

THIS DRAWING IS UNPUBLISHED. RELEASED FOR PUBLICATION
 © COPYRIGHT - By - ALL RIGHTS RESERVED.

REVISIONS					
P	LTR	DESCRIPTION	DATE	DWN	APVD
A		REVISED PER ECO-10-018387	08SEP10	HMR	MS
B		REVISED PER ECO-16-017419	16MAR2017	RS	DR
C		REVISED PER ECO-18-017733	12NOV2018	RS	DR



AMP WIRE RANGE	Listed FILE E13288	LR7189 Certified
22-16 AWG SOLID OR STRANDED	N/A	N/A

- 1 STAMP AMP 22-18*, APPROX WHERE SHOWN, 22-16 TERMINALS ARE STAMPED 22-18 IN ACCORDANCE WITH MILITARY SPEC SAE AS7928, COMMERCIAL WIRE RANGE IS 22-16.
- 2 WIRE INSULATION IS 2.032-3.175[.080-.125]
- 3 BODY MATL THK IS 0.787±0.051[.031±.002]
- 4 MATERIAL: BODY- COPPER PER ASTM B152
SLEEVE- COPPER PER ASTM B152.
- 5 FINISH: BODY AND SLEEVE
TIN-LEAD PLATE 60/40, 0.00762[.000300] MIN EXT THK.
PER SAE AMS-P-81728

1000	LOOSE PIECE	1958003-1
QTY	PACKAGE TYPE	PART NO

AMP INCORPORATED CUSTOMER SERVICE SYSTEMS		MAX RECOMMENDED OPERATING TEMPERATURE: 170°C [338°F]	THIS DRAWING IS A CONTROLLED DOCUMENT.		DWN jr_ruth 24AUG06	TE Connectivity Ltd.			
FOR ADDITIONAL PRODUCT INFORMATION OR COPIES OF DRAWINGS AND TECHNICAL DOCUMENTS	PRODUCT INFORMATION CENTER 1-800-522-6752	VOLTAGE RATING: -	DIMENSIONS: mm [INCHES]	TOLERANCES UNLESS OTHERWISE SPECIFIED:	CHK MJ SPICER 24AUG06				NAME TERMINAL, RING, DIAMOND GRIP, WIRE SIZE: 22-16 AWG
FOR APPLICATION TOOLING INFORMATION	TOOLING ASSISTANCE CENTER 1-800-722-1111	CIRCULAR MIL AREA: 0.26-1.65mm² [509-3260] SOLID OR STRANDED		0 PLC ± - 1 PLC ± - 2 PLC ± - 3 PLC ± 0.203[.008] 4 PLC ± - ± 5' ANGLES	APVD MJ SPICER 24AUG06	SIZE	CAGE CODE	DRAWING NO	RESTRICTED TO
FOR ORDER ENTRY	1-800-526-5142	THIS DRAWING IS A CONTROLLED DOCUMENT FOR AMP INCORPORATED. IT IS SUBJECT TO CHANGE AND THE CONTROLLING ENGINEERING ORGANIZATION SHOULD BE CONTACTED FOR THE LATEST REVISION.	MATERIAL	FINISH	APPLICATION SPEC	A3	00779	1958003	-
					CUSTOMER DRAWING	SCALE	6:1	SHEET	1 OF 1
								REV	C