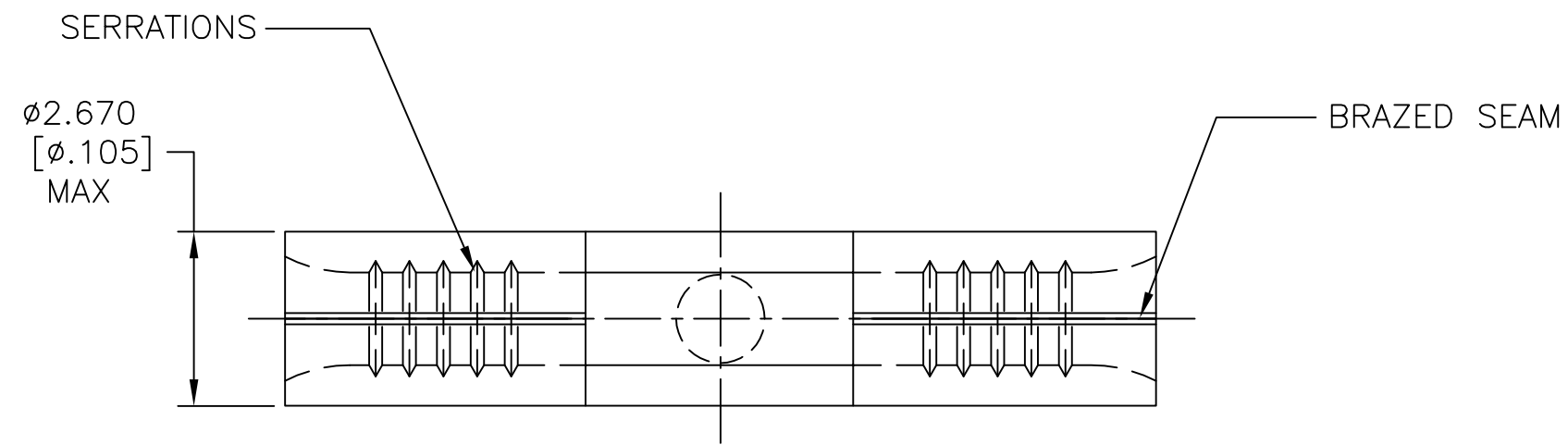


THIS DRAWING IS UNPUBLISHED. RELEASED FOR PUBLICATION
 © COPYRIGHT - By - ALL RIGHTS RESERVED.

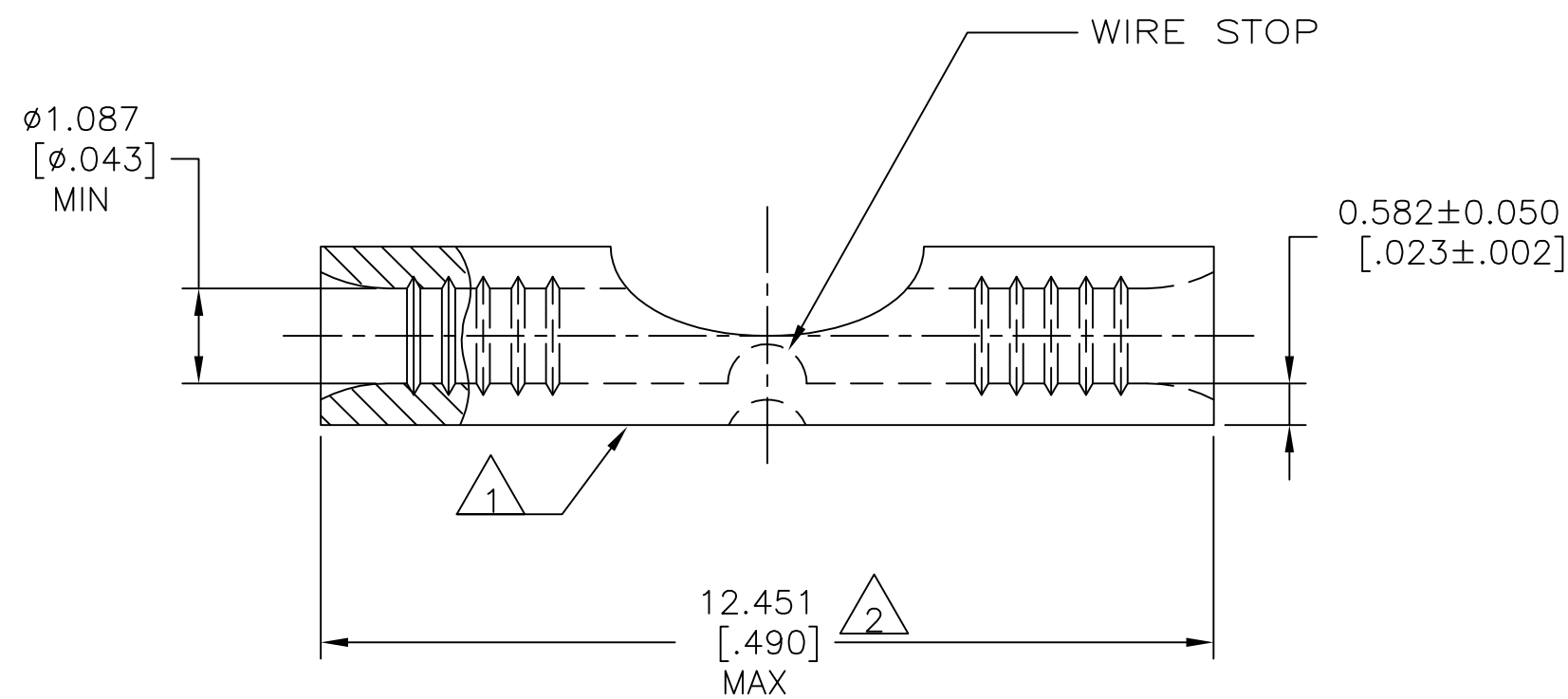
REVISIONS					
P	LTR	DESCRIPTION	DATE	DWN	APVD
A2		REVISED PER ECO-14-019230	03APR2015	NK	DR
B		REVISED PER ECO-17-006483	09MAY2017	RS	DR



AMP
WIRE RANGE

24-20 AWG
SOLID OR STRANDED

- 1 STAMP AMP APPROX AS SHOWN.
- 2 MAXIMUM LENGTH DOES NOT INCLUDE MANUFACTURING TABS.
- 3 COPPER PER ASTM B-152, FULLY ANNEALED.
- 4 TIN PLATE 0.00254[.000100] MIN PER ASTM B-545.



20,000	LOOSE PIECE	1958323-1
QTY	PACKAGE TYPE	PART NO

CUSTOMER SERVICE SYSTEMS

MAX RECOMMENDED OPERATING TEMPERATURE:
170°C[338°F] MAX

VOLTAGE RATING:
N/A

CIRCULAR MIL AREA:
0.16-0.65mm²[320-1,290]
SOLID OR STRANDED

FOR ADDITIONAL PRODUCT INFORMATION OR COPIES OF DRAWINGS AND TECHNICAL DOCUMENTS	PRODUCT INFORMATION CENTER 1-800-522-6752
FOR APPLICATION TOOLING INFORMATION	TOOLING ASSISTANCE CENTER 1-800-722-1111
FOR ORDER ENTRY	1-800-526-5142

THIS DRAWING IS A CONTROLLED DOCUMENT.		DWN JR RUTH 04NOV09	TE Connectivity	
DIMENSIONS: mm [INCHES]		CHK TOM MICHELUTTI 04NOV09	NAME	
TOLERANCES UNLESS OTHERWISE SPECIFIED:		APVD TOM MICHELUTTI 04NOV09	SPLICE, BUTT, STRAP, SOLISTRAND 24-20 AWG	
0 PLC ± -		PRODUCT SPEC	SIZE	CAGE CODE
1 PLC ± -		APPLICATION SPEC	A2	00779
2 PLC ± -		WEIGHT	DRAWING NO	
3 PLC ± 0.127[.005]		FINISH	C=1958323	
4 PLC ± -		MATERIAL	SCALE	SHEET
ANGLES ± -		3	10:1	1 of 1
FINISH		4	REV	B
CUSTOMER DRAWING			RESTRICTED TO	